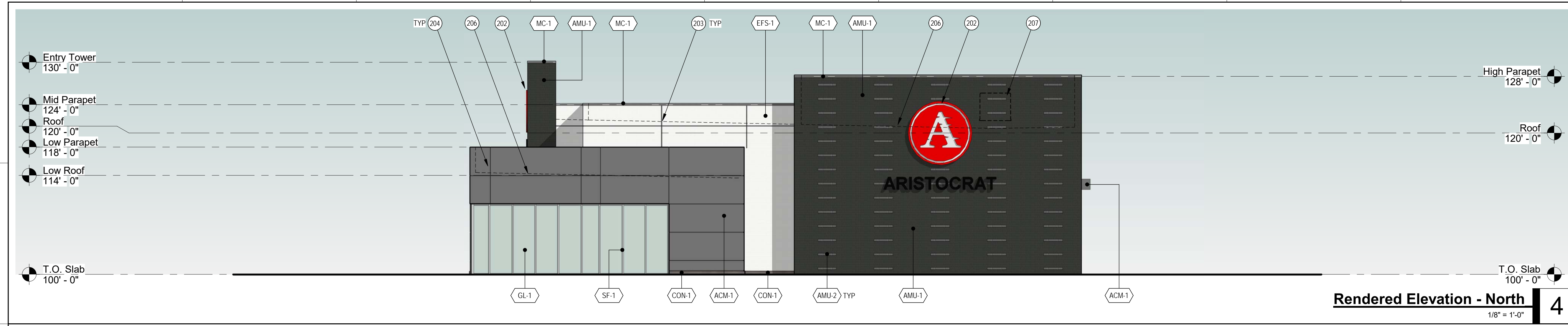
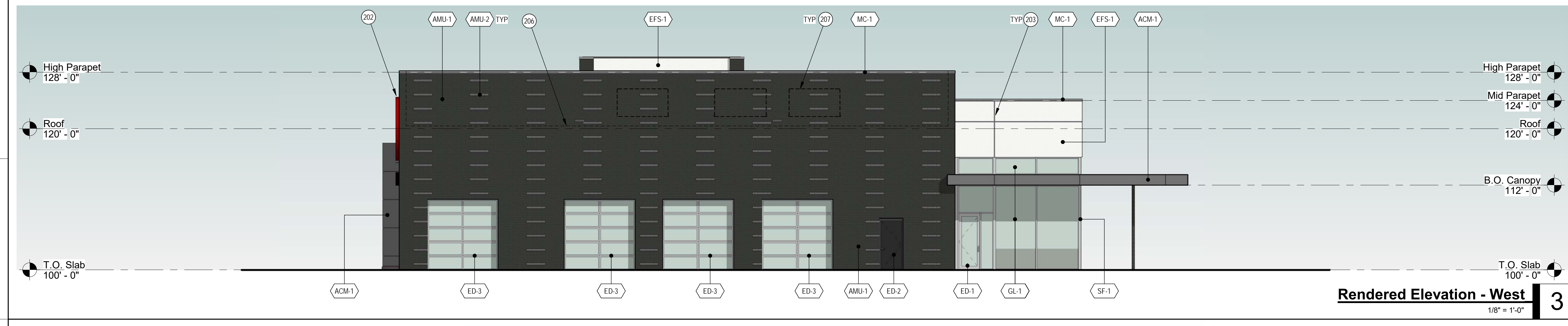


Aristocrat Pre-Owned Sales Building

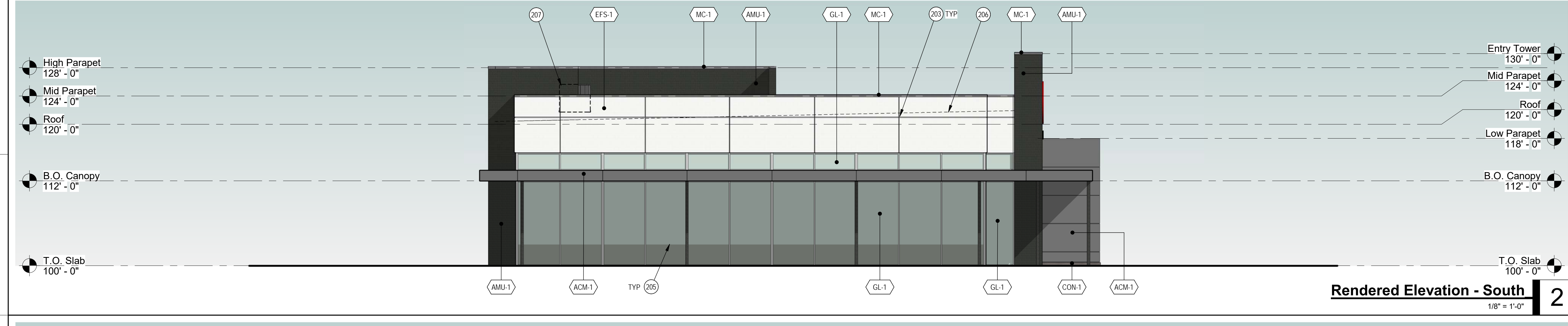
New Construction
Soave Automotive Group
Lee's Summit, MO



Rendered Elevation - North 4
1/8" = 1'-0"



Rendered Elevation - West 3
1/8" = 1'-0"



Rendered Elevation - South 2
1/8" = 1'-0"



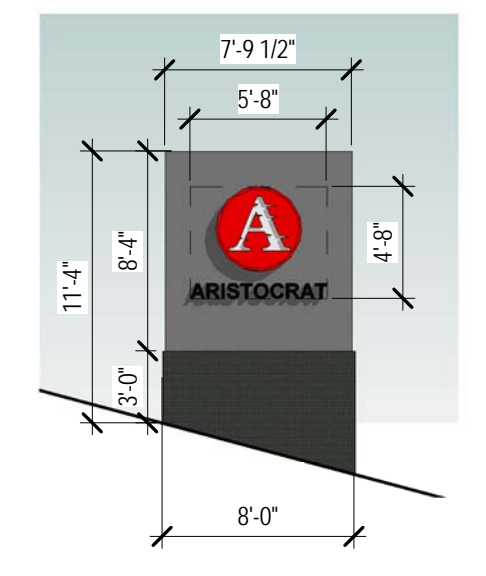
Rendered Elevation - East 1
1/8" = 1'-0"

MATERIALS

| | |
|-------|--|
| ACM-1 | ALUMINUM WALL PANEL MANUFACTURER: ALPOLIC COLOR/FINISH: MICA MFS GREY |
| AMU-1 | ARCHITECTURAL MASONRY UNIT 4 X 16 RUNNING BOND MANUFACTURER: YORK BUILDING PRODUCTS COLOR/FINISH: GEMSTONE - MNK (GLOSSY) |
| AMU-2 | ARCHITECTURAL MASONRY UNIT 4 X 16 RUNNING BOND MANUFACTURER: YORK BUILDING PRODUCTS COLOR/FINISH: GEMSTONE - MNK (MATT) |
| CON-1 | CAST IN PLACE CONCRETE WALL CURB COLOR/FINISH: TBD |
| ED-1 | WIDES STILE ALUMINUM STOREFRONT DOOR MANUFACTURER: KAWNEER COLOR/FINISH: (MATCH SF-1 AND GL-1) |
| ED-2 | FLUSH HOLLOW CORE STEEL DOOR W/ HIGH PERFORMANCE COATING COLOR/FINISH: TBD |
| ED-3 | OVERHEAD GLASS AND ALUMINUM FRAME SECTIONAL DOOR MANUFACTURER: TBD COLOR/FINISH: (MATCH SF-1 AND GL-1) |
| EFS-1 | EXTERIOR INSULATED FINISH SYSTEM (EIFS) MANUFACTURER: TBD COLOR/FINISH: FINE TEXTURE - 612 MOONLIGHT |
| GL-1 | CLEAR INSULATED LOW-E GLAZING MANUFACTURER: AGC ENERGY SELECT 40 |
| MC-1 | PRE-FINISHED METAL COPING MFG. MANUFACTURER: BERRIDGE MFG. COLOR/FINISH: LEAD-COTE |
| SF-1 | ALUMINUM STOREFRONT SYSTEM MANUFACTURER: KAWNEER COLOR/FINISH: CLEAR ANODIZED |

KEYNOTES

| | |
|-----|--|
| 201 | STRUCTURAL COLUMN WITH HIGH PERFORMANCE COATING COLOR/FINISH: TBD |
| 202 | WALL MOUNTED BUILDING SIGNAGE BY OWNER |
| 203 | EIFS V' GROOVE REVEAL |
| 204 | ACM JOINT / REVEAL |
| 205 | TRANSLUCENT FILM APPLIED TO LOWER PORTION OF GLAZING |
| 206 | LINE OF ROOF BEYOND PARAPET |
| 207 | ROOF TOP UNIT (RTU) BEYOND PARAPET |



Monument Sign
1/8" = 1'-0"

Revisions:

Project #: 180508

Preliminary Development Plan Resubmittal
07/15/2019



Aristocrat Pre-Owned Sales Building

New Construction

Soave Automotive Group

Lee's Summit, MO

Revisions:

| | |
|--|--|
| | |
| | |
| | |
| | |
| | |
| | |
| | |
| | |
| | |
| | |

Project #: 180508

**Preliminary Development
 Plan Resubmittal**
 07/15/2019