

STARBUCKS COFFEE #63039

Rt 291 & 150

150 SW M-150 Hwy

Lee's Summit MO



20-50278

***HILTONDISPLAYS***

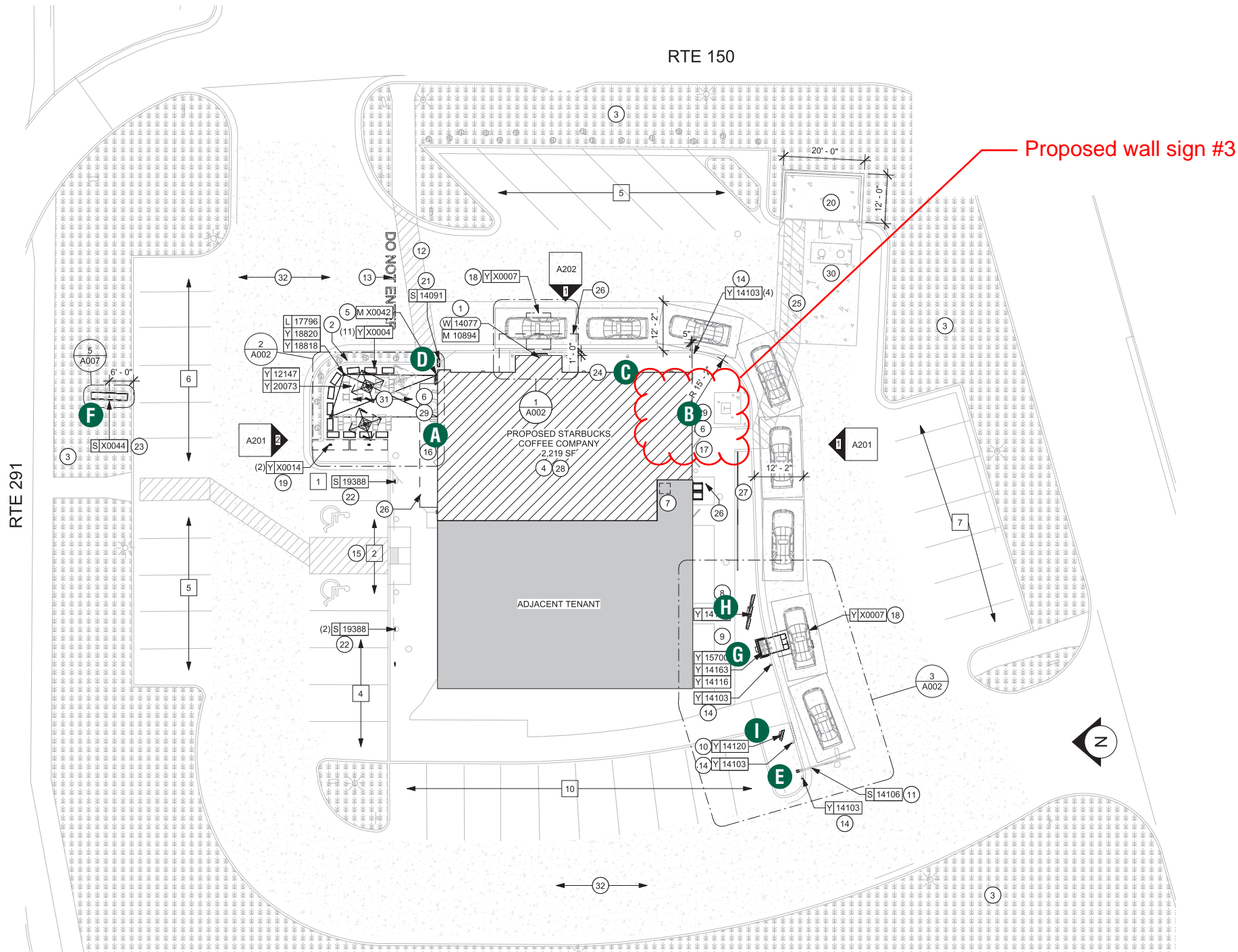
125 HILLSIDE DRIVE • GREENVILLE SC 29607

P 800 353 9132 • F 864 242 2204

[www.hiltondisplays.com](http://www.hiltondisplays.com)

**SITE PLAN**

- A** 71" SIREN ← Wall sign #1
- B** 60" SIREN ← Proposed wall sign #3
- C** 20" CHANNEL LETTERS ← Wall sign #2
- D** 30" TY/EO DIRECTIONAL
- E** CLEARANCE BAR
- F** PYLON FACES
- G** DOS ON CANOPY / DCB
- H** MENU BOARD
- I** PRE-MENU BOARD



ARCHITECTURAL SITE PLAN - FOR REFERENCE ONLY

Scale: 1/16" = 1'-0"

**HILTON DISPLAYS**

125 HILLSIDE DRIVE • GREENVILLE SC 29607  
 P 800 353 9132 • F 864 242 2204  
 www.hiltondisplays.com

**QID 20-50278**

**JOB NAME**

Starbucks 63039

**LOCATION**

Rt 291 & 150  
 150 SW M-150 Hwy  
 Lee's Summit MO

**CUSTOMER CONTACT**

**SALESMAN / PM**

Maddie Keller

**DESIGNER**

Glenn Miller

**DWG. DATE**

5-22-20

**REV. DATE / REVISION**

5-26-20

6-23-20

9-09-20

9-11-20

9-15-20

**SCALE**

Not to Scale

**FILE**

2020/Starbucks/  
 Lees Summit MO/20-50278/  
 SB Lees Summit MO 20-50278

**DESIGN SPECIFICATIONS ACCEPTED BY:**

EST: CLIENT:

SLS/PM: LANDLORD:

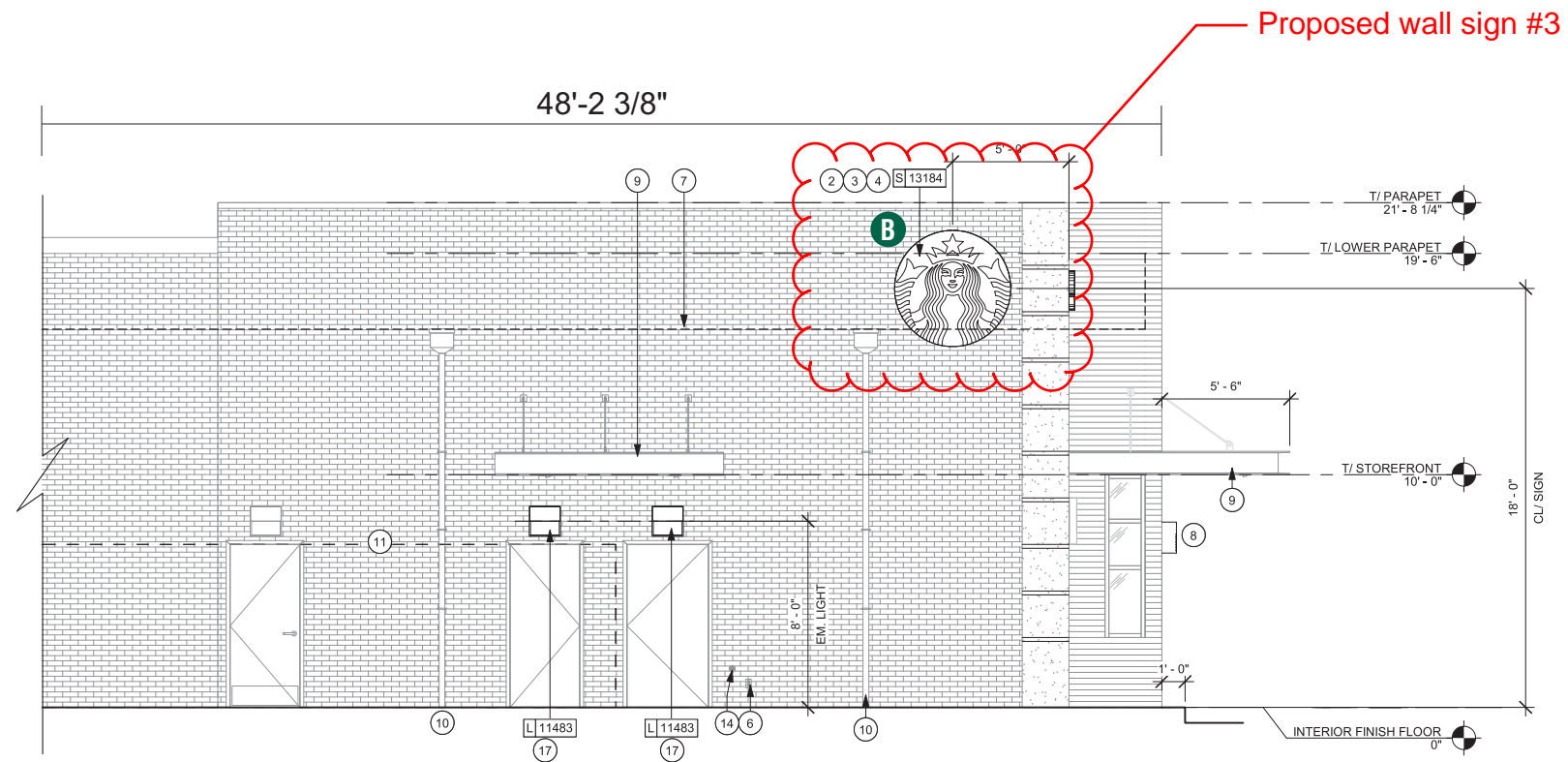
THE INTENT OF THIS DRAWING IS TO SHOW A CONCEPTUAL REPRESENTATION OF THE PROPOSED SIGNAGE. DUE TO VARIATIONS IN PRINTING DEVICES AND SUBSTRATES, THE FINISHED PRODUCT MAY DIFFER SLIGHTLY FROM DRAWING.

 Underwriters Laboratories Inc. 

DRY	<input type="checkbox"/>
DAMP	<input type="checkbox"/>
WET	<input checked="" type="checkbox"/>

**ELEVATION**

- A** 71" SIREN
- B** 60" SIREN
- C** 20" CHANNEL LETTERS
- D** 30" TY/EO DIRECTIONAL
- E** CLEARANCE BAR
- F** PYLON FACES
- G** DOS ON CANOPY / DCB
- H** MENU BOARD
- I** PRE-MENU BOARD



**1 SOUTH ELEVATION**  
Scale: 1/8" = 1' (11x17 Paper)

**QID 20-50278**

**JOB NAME**

Starbucks 63039

**LOCATION**

Rt 291 & 150  
150 SW M-150 Hwy  
Lee's Summit MO

**CUSTOMER CONTACT**

**SALESMAN / PM**

Maddie Keller

**DESIGNER**

Glenn Miller

**DWG. DATE**

5-22-20

**REV. DATE / REVISION**

5-26-20
6-23-20
9-09-20
9-11-20
9-15-20

**SCALE**

Not to Scale

**FILE**

2020/Starbucks/  
Lees Summit MO/20-50278/  
SB Lees Summit MO 20-50278

**DESIGN SPECIFICATIONS ACCEPTED BY:**

EST:	CLIENT:
SLS/PM:	LANDLORD:

THE INTENT OF THIS DRAWING IS TO SHOW A CONCEPTUAL REPRESENTATION OF THE PROPOSED SIGNAGE. DUE TO VARIATIONS IN PRINTING DEVICES AND SUBSTRATES, THE FINISHED PRODUCT MAY DIFFER SLIGHTLY FROM DRAWING.



# 60" ILLUMINATED SIREN

Qty. 1

SBC-S13164-SL

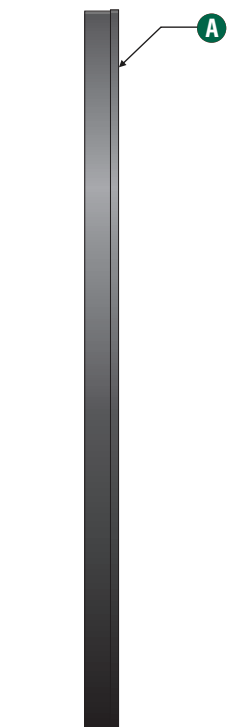
**B**



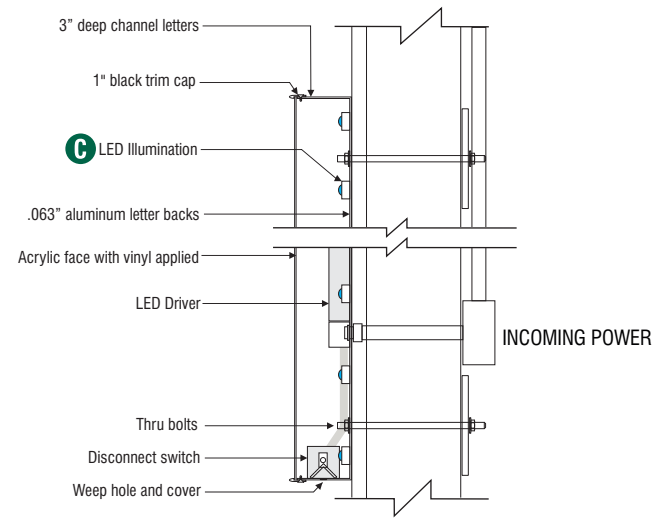
**1 Front View**

3/4" = 1'-0" (11x17 Paper)

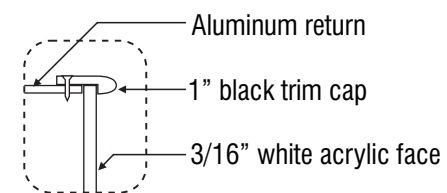
3" (76mm)



**2 Side View**



**3 Disk Section View Typ.**



**4 Enlarged Detail**

### SPECIFICATIONS:

- A** Single faced internally illuminated wall mount logo disk. Cabinet to be 3" deep, fabricated aluminum returns and back. Paint cabinet black. Faces to be 3/16" white Plex with 1" black trimcap
- B** Graphics of logo to be 1st surface 3M Translucent Scotchcal vinyl- Holly Green #3630-76. Siren to show thru White.
- C** Internally illuminated logo disk with Sloan Prism Enlighten 6500K white LEDs

COLOR LEGEND		
	PMS/PAINT	VINYL
	PMS 3425 C	3M 3630-76
	RAL 7021M	3M 3630-22
	PMS WHITE	3M 3630-20/ 7725-10 TRANSLUCENT OPAQUE
	PMS 369 C	NA
	REFL. WHITE	3M 680-10

Wall Mount EVOLVED			
Size	Sq.Ft.	Sq.M.	Volts
60" (1524mm)	19.62	1.82	120/277

**HILTONDISPLAYS**

125 HILLSIDE DRIVE • GREENVILLE SC 29607  
P 800 353 9132 • F 864 242 2204  
www.hiltondisplays.com

**QID 20-50278**

**JOB NAME**

Starbucks 63039

**LOCATION**

Rt 291 & 150  
150 SW M-150 Hwy  
Lee's Summit MO

**CUSTOMER CONTACT**

**SALESMAN / PM**

Maddie Keller

**DESIGNER**

Glenn Miller

**DWG. DATE**

5-22-20

**REV. DATE / REVISION**

5-26-20

6-23-20

9-09-20

9-11-20

9-15-20

**SCALE**

Not to Scale

**FILE**

2020/Starbucks/  
Lees Summit MO/20-50278/  
SB Lees Summit MO 20-50278

**DESIGN SPECIFICATIONS ACCEPTED BY:**

EST:	CLIENT:
SLS/PM:	LANDLORD:

THE INTENT OF THIS DRAWING IS TO SHOW A CONCEPTUAL REPRESENTATION OF THE PROPOSED SIGNAGE. DUE TO VARIATIONS IN PRINTING DEVICES AND SUBSTRATES, THE FINISHED PRODUCT MAY DIFFER SLIGHTLY FROM DRAWING.

