

LANDSCAPE DATA LOT 1 ONLY
STREET FRONTAGE LANDSCAPE
 LAKEWOOD WAY TREES REQUIRED PER 30' (43,370')
 PRIVATE DRIVE TREES PROVIDED PER 30' (502,3170')
 PRIVATE DRIVE TREES PROVIDED
 LAKEWOOD WAY SHRUBS REQUIRED PER 30' (43,370')
 PRIVATE DRIVE SHRUBS PROVIDED PER 30' (502,3170')
 PRIVATE DRIVE SHRUBS PROVIDED

SITE LANDSCAPE REQUIRED
 TREES REQUIRED (1 PER 5,000 S.F. OF OPEN SPACE) (202,504-24,500,000)
 TREES PROVIDED
 SHRUBS REQUIRED (2 PER 1,000 S.F. OF LOT AREA) (202,504-24,500,000)
 SHRUBS PROVIDED

LANDSCAPE AREA PROVIDED
 LANDSCAPE AREA PROVIDED PER ISLAND
 TREES PROVIDED
 SCREENING 2.5 FT ALONG ENTIRE FRONTAGE ADJ. TO STREET

NOTES
 1. ALL INFORMATION ON THIS PLAN IS BASED ON THE INFORMATION PROVIDED BY THE CLIENT. THE CLIENT IS RESPONSIBLE FOR THE ACCURACY OF THE INFORMATION PROVIDED.
 2. THE LANDSCAPE DESIGN IS BASED ON THE ASSUMPTION THAT THE CLIENT WILL MAINTAIN THE LANDSCAPE AS SHOWN ON THIS PLAN.
 3. ALL PLANT MATERIALS SHALL BE SPECIALLY GROWN AND SHIPPED TO THE SITE IN CONTAINERS.
 4. ALL PLANT MATERIALS SHALL BE SPECIALLY GROWN AND SHIPPED TO THE SITE IN CONTAINERS.
 5. ALL PLANT MATERIALS SHALL BE SPECIALLY GROWN AND SHIPPED TO THE SITE IN CONTAINERS.
 6. ALL PLANT MATERIALS SHALL BE SPECIALLY GROWN AND SHIPPED TO THE SITE IN CONTAINERS.
 7. ALL PLANT MATERIALS SHALL BE SPECIALLY GROWN AND SHIPPED TO THE SITE IN CONTAINERS.
 8. ALL PLANT MATERIALS SHALL BE SPECIALLY GROWN AND SHIPPED TO THE SITE IN CONTAINERS.
 9. ALL PLANT MATERIALS SHALL BE SPECIALLY GROWN AND SHIPPED TO THE SITE IN CONTAINERS.
 10. ALL PLANT MATERIALS SHALL BE SPECIALLY GROWN AND SHIPPED TO THE SITE IN CONTAINERS.
 11. ALL PLANT MATERIALS SHALL BE SPECIALLY GROWN AND SHIPPED TO THE SITE IN CONTAINERS.
 12. ALL PLANT MATERIALS SHALL BE SPECIALLY GROWN AND SHIPPED TO THE SITE IN CONTAINERS.
 13. ALL PLANT MATERIALS SHALL BE SPECIALLY GROWN AND SHIPPED TO THE SITE IN CONTAINERS.
 14. ALL PLANT MATERIALS SHALL BE SPECIALLY GROWN AND SHIPPED TO THE SITE IN CONTAINERS.
 15. ALL PLANT MATERIALS SHALL BE SPECIALLY GROWN AND SHIPPED TO THE SITE IN CONTAINERS.

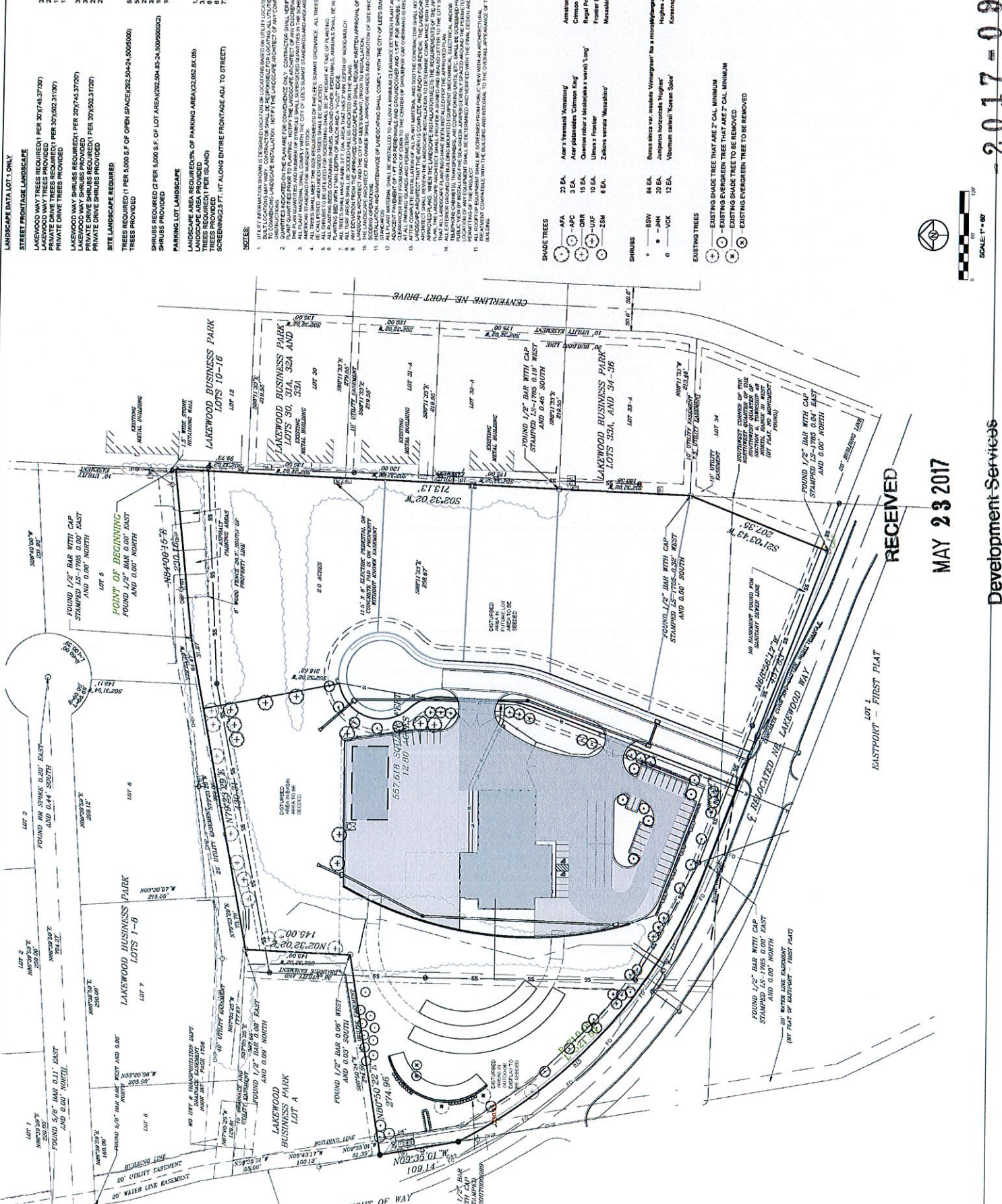
SHADE TREES
 23 EA. Acer 7' (medium) 'Worming'
 3 EA. Acer glaberrimus 'Crimson King'
 10 EA. Quercus rubra 'Isotriaena' (var. 'Long')
 10 EA. Fraxinus 'Princeton'
 8 EA. Zelkova serrata 'Wassailu'

SHRUBS
 84 EA. Buxus sikkimensis 'Imperial Green'
 70 EA. Juniperus horizontalis 'Nana'
 12 EA. Viburnum cerasifolium 'Korean Spice'

EXISTING TREES
 - EXISTING SHADE TREE THAT ARE 2" CAL. MINIMUM
 - EXISTING SHADE TREE TO BE REMOVED
 - EXISTING EVERGREEN TREE TO BE REMOVED

CONT.
 5 gal.
 5 gal.
 5 gal.
 5 gal.

2017-097



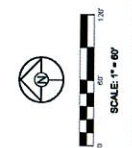
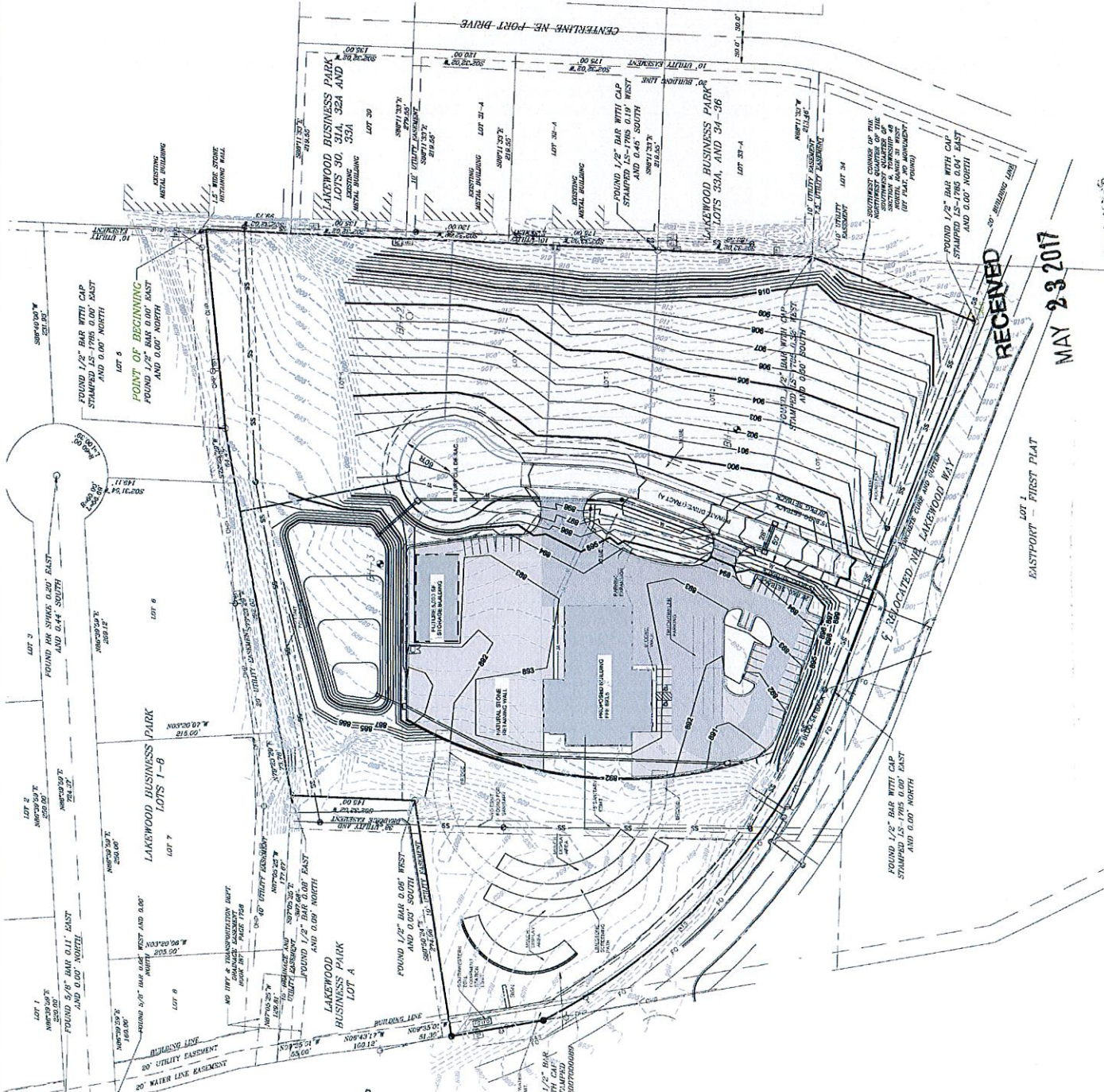
MAY 23 2017

RECEIVED

Development Services

GRADING NOTES:

1. NO TREE OR UNDERGIRMS ARE INDICATED BEHIND THE CURBS. OWNER SHOULD CONSIDER THE REMOVAL OF UNDERGIRMS DUE TO THE IRRIGATION OF GREENSPACE AREAS OF THE SITE.
2. RECOMMEND A GEOTECHNICAL ENGINEER REVIEW ALL EARTHWORK ACTIVITY TO MAKE SURE RECOMMENDATIONS IN GEOTECHNICAL REPORT ARE FOLLOWED.
3. PRIOR TO PLACEMENT OF CURBS AND GUTTERS AND PAVEMENT, GEOTECHNICAL ENGINEER MUST APPROVE SUBGRADE IN WRITTEN FORM TO THE OWNER AND PROJECT ENGINEER.
4. ALL UTILITY INSTALLATIONS UNDER PAVED AREAS MUST BE CONSTRUCTED AS PER THE RECOMMENDATIONS OF THE GEOTECHNICAL ENGINEER AND/OR GEOTECHNICAL REPORT SPECIFICATIONS.
5. ALL CONSTRUCTION SHALL COMPLY WITH THE CITY OF LEES SUMMIT TECHNICAL SPECIFICATIONS.
6. EXISTING TOPOGRAPHY SHOWN AS SET BACKS FROM THE SURVEY PREPARED BY P.L. BURTON & ASSOCIATES LLC. VERIFY GRADES PRIOR TO CONSTRUCTION. THE CONTRACTOR SHALL BE RESPONSIBLE FOR ALL GRADING ON THE SITE INCLUDING THE MANIPULATION OF EXISTING TRENCHES. ALL TRENCHES LEFT ALONG THE SEWER TRENCHES. THE COST FOR THIS WORK WILL BE INCLUDED IN THE LUMP SUM FEE FOR GRADING.
7. ALL ROCK, CONCRETE, ASPHALT, TREE BRUSH, ETC. TO BE REMOVED AS A PART OF THE GRADING CONTRACTOR'S OBLIGATION. THE CONTRACTOR SHALL BE RESPONSIBLE FOR THE REMOVAL OF ALL MATERIALS TO BE REMOVED AS A PART OF THE GRADING CONTRACTOR'S OBLIGATION. THE CONTRACTOR SHALL BE RESPONSIBLE FOR THE REMOVAL OF ALL MATERIALS TO BE REMOVED AS A PART OF THE GRADING CONTRACTOR'S OBLIGATION.
8. EXISTING TRENCHES SHALL BE REGRADED TO A FINISH GRADE IN COMPLIANCE WITH THE CITY OF LEES SUMMIT TECHNICAL SPECIFICATIONS AND MUNICIPAL CODE. THE CONTRACTOR SHALL PROVIDE FOR POSITIVE DRAINAGE AWAY FROM BUILDINGS AND SEWERLINES AT ALL TIMES.
9. THE CONTRACTOR IS RESPONSIBLE FOR PROTECTION OF ALL PROPERTY CORNERS. ANY PROPERTY CORNER DISTURBED OR DAMAGED BY GRADING ACTIVITIES SHALL BE RESET BY THE CONTRACTOR AT HIS OWNERS RISK AND AT HIS OWNERS EXPENSE. THE CONTRACTOR SHALL BE RESPONSIBLE FOR PROTECTION OF ALL PROPERTY CORNERS. ANY PROPERTY CORNER DISTURBED OR DAMAGED BY GRADING ACTIVITIES SHALL BE RESET BY THE CONTRACTOR AT HIS OWNERS RISK AND AT HIS OWNERS EXPENSE.



- 2017-097

RECEIVED
MAY 23 2017
Development Services

LOT 1 - FIRST FLAT

FOUND 1/2\"/>

FOUND 1/2\"/>

FOUND 1/2\"/>

FOUND 1/2\"/>

FOUND 1/2\"/>

FOUND 1/2\"/>

FOUND 1/2\"/>

FOUND 1/2\"/>

TEVIS ARCHITECTS
www.tevisarchitects.com

LENSA OFFICE:
1500 W. GALEY STE. 200
LENSA, KS 66240
P: 785.233.1694

TORPEKA OFFICE:
1200 SW GALEY STE. 200
TORPEKA, KS 66684
P: 785.233.1694

MFP ENGINEER:
1500 W. GALEY STE. 200
LENSA, KS 66240
P: 785.233.1694

STRUCTURAL ENGINEER:
ENGINEERS, INC.
1500 W. GALEY STE. 200
LENSA, KS 66240
P: 785.233.1694

CIVIL ENGINEER:
ENGINEERS, INC.
1500 W. GALEY STE. 200
LENSA, KS 66240
P: 785.233.1694

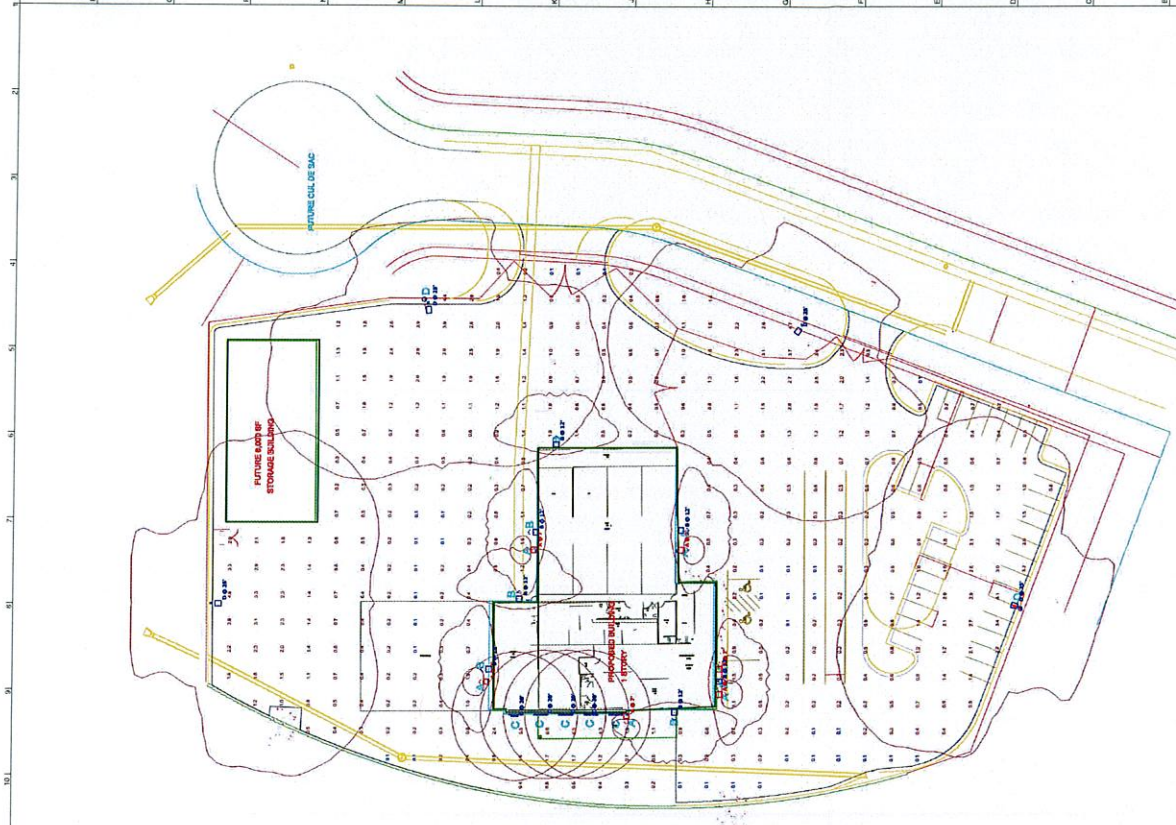


COLEMAN EQUIPMENT
5050 LAWOOD WAY
LEES SUMMIT, MO 64084

PN: 217001
FORM: 30005
DATE: 05/22/2017
CHECKED BY: JPH

NO.	DESCRIPTION	DATE
1	CITY COMMENT	05/23/2017

PHOTOMETRIC PLAN
E1.1
FINAL SET
05/23/2017



AFRINGER LIGHTING

OLCS

OLCS is a line of outdoor lighting fixtures designed for long life and low maintenance. The fixtures are made of die-cast aluminum and are available in a variety of finishes and colors. They are designed to be easy to install and maintain.

Available Series: RTR

ACEL

ACEL is a line of outdoor lighting fixtures designed for long life and low maintenance. The fixtures are made of die-cast aluminum and are available in a variety of finishes and colors. They are designed to be easy to install and maintain.

Item	Description	Quantity	Unit
A	1' x 4' RTR	1	Fixture
B	2' x 4' RTR	1	Fixture
C	4' x 4' RTR	1	Fixture
D	6' x 4' RTR	1	Fixture
E	8' x 4' RTR	1	Fixture
F	10' x 4' RTR	1	Fixture
G	12' x 4' RTR	1	Fixture
H	14' x 4' RTR	1	Fixture
I	16' x 4' RTR	1	Fixture
J	18' x 4' RTR	1	Fixture
K	20' x 4' RTR	1	Fixture
L	22' x 4' RTR	1	Fixture
M	24' x 4' RTR	1	Fixture
N	26' x 4' RTR	1	Fixture
O	28' x 4' RTR	1	Fixture
P	30' x 4' RTR	1	Fixture
Q	32' x 4' RTR	1	Fixture
R	34' x 4' RTR	1	Fixture
S	36' x 4' RTR	1	Fixture
T	38' x 4' RTR	1	Fixture
U	40' x 4' RTR	1	Fixture
V	42' x 4' RTR	1	Fixture
W	44' x 4' RTR	1	Fixture
X	46' x 4' RTR	1	Fixture
Y	48' x 4' RTR	1	Fixture
Z	50' x 4' RTR	1	Fixture

MANUFACTURE WALLPACK IV

Wallpack IV is a line of outdoor lighting fixtures designed for long life and low maintenance. The fixtures are made of die-cast aluminum and are available in a variety of finishes and colors. They are designed to be easy to install and maintain.

PROVIDER

PROVIDER is a line of outdoor lighting fixtures designed for long life and low maintenance. The fixtures are made of die-cast aluminum and are available in a variety of finishes and colors. They are designed to be easy to install and maintain.

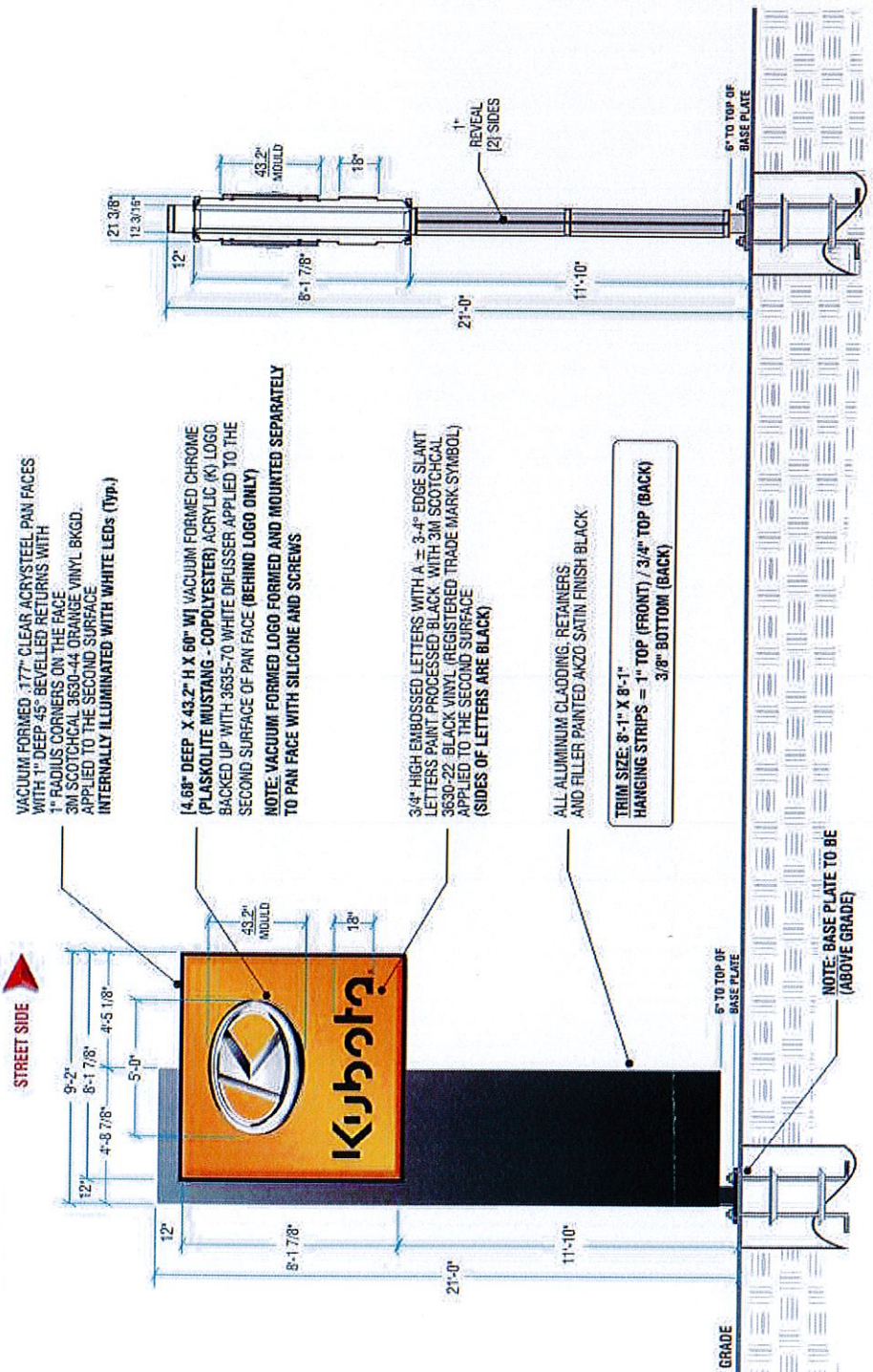
RECEIVED
MAY 23 2017
ELECTRICAL PHOTOMETRIC PLAN A1
SITE PLAN

- 2017-097

Development Services

NEW D/S VACUUM FORMED ILLUMINATED 21 FT PYLON SIGN

MSTR-KUB-SPD-050331



VACUUM FORMED, 1/77" CLEAR ACRYL STEEL PAN FACES WITH 1" DEEP 45° BEVELLED RETURNS WITH 1" RADIUS CORNERS ON THE FACE
 3M SCOTCHCAL 3630-44 ORANGE VINYL BKGD. APPLIED TO THE SECOND SURFACE
 INTERNALLY ILLUMINATED WITH WHITE LEDs (Typ.)

4.68" DEEP X 43.2" H X 60" W VACUUM FORMED CHROME (PLASKOLITE MUSTANG - COPOLYESTER) ACRYLIC (K) LOGO BACKED UP WITH 3635-70 WHITE DIFFUSER APPLIED TO THE SECOND SURFACE OF PAN FACE (BEHIND LOGO ONLY)
NOTE: VACUUM FORMED LOGO FORMED AND MOUNTED SEPARATELY TO PAN FACE WITH SILICONE AND SCREWS

3/4" HIGH EMBOSSED LETTERS WITH A ± 3/4" EDGE SLANT LETTERS PAINT PROCESSED BLACK WITH 3M SCOTCHCAL 3630-22 BLACK VINYL (REGISTERED TRADE MARK SYMBOL) APPLIED TO THE SECOND SURFACE
 (SIDES OF LETTERS ARE BLACK)

ALL ALUMINUM CLADDING, RETAINERS AND FILLER PAINTED AKZO SATIN FINISH BLACK

TRIM SIZE: 8'-1" X 8'-1"
 HANGING STRIPS = 1" TOP (FRONT) / 3/4" TOP (BACK)
 3/8" BOTTOM (BACK)

NOTE: BASE PLATE TO BE (ABOVE GRADE)

CONCEPTUAL ARTWORK ONLY - NOT TO BE USED FOR PRODUCTION UNTIL APPROVED BY ENGINEERING

TEKSIGN INC.
 The name behind your name
 DESIGN • ENGINEERING • MANUFACTURING
 86 Plant Farm Blvd., Brantford, Ontario N3S 7W3

Customer: KUBOTA
 Address: VARIOUS - MASTERS
 Designer: SDH
 Acct. Rep: TIM ZADOW

Drawing No: 45013
 Sheet: 17
 Scale: 3/16" = 1'-0"
 Date: OCT. 21/13

This drawing is the property of TEKSIGN, INC. and contains proprietary and confidential information which must not be duplicated, used or disclosed unless expressly authorized by TEKSIGN, INC.

REVISION/ ECR:
 R2-NOV. 25/13-CHANGE LETTER FROM (VINYL) TO PAINT PROCESSED BLACK
 R5-JAN. 09/14-REVISE (WHITE DIFFUSER)
 R4-FEB. 05/14-ADD BOTTOM HANGING STRIP
 R5-MAY 13/14-REVISE RETAINER DIMENSIONS AND TRIM SIZE

Approval: 
 Date:

RECEIVED

MAY 23 2017

- 2017 = 097

Development

