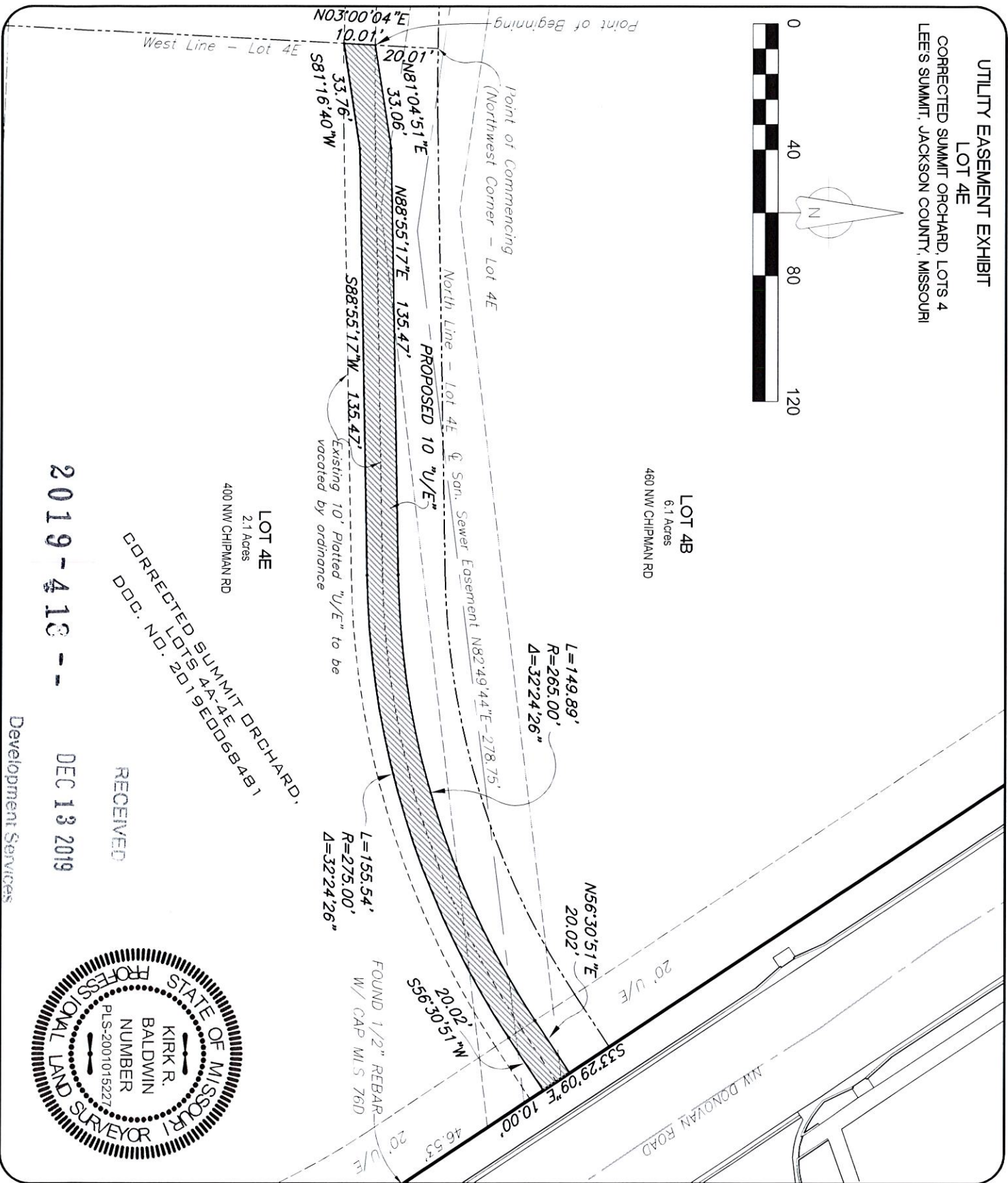
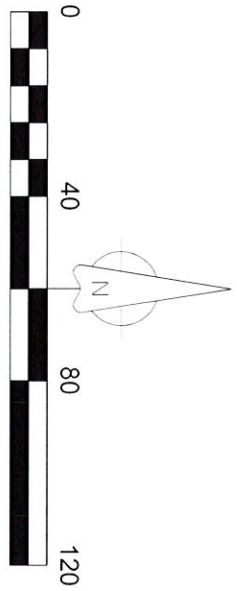


UTILITY EASEMENT EXHIBIT
 LOT 4E
 CORRECTED SUMMIT ORCHARD, LOTS 4
 LEE'S SUMMIT, JACKSON COUNTY, MISSOURI



LOT 4E
 2.1 Acres
 400 NW CHIPMAN RD
 CORRECTED SUMMIT ORCHARD,
 LOTS 4A-4E
 DDB. NO. 2019EDD6B4B1

LOT 4B
 6.1 Acres
 460 NW CHIPMAN RD

2019-413 -- DEC 13 2019

Development Services

RECEIVED



| REVISIONS | | | DRAWING INFO. | | |
|-----------|-------------|----|---------------|--------------|----------------|
| NO. | DESCRIPTION | BY | DATE | DRAWN BY: | KRB |
| | | | | CHECK BY: | |
| | | | | LICENSE NO.: | PLS 2001015227 |
| | | | | DATE: | |
| | | | | FIELD BOOK: | |
| | | | | JOB NUMBER: | |

UTILITY EASEMENT EXHIBIT
 LOT 4E
 CORRECTED SUMMIT ORCHARD, LOTS 4
 LEE'S SUMMIT, JACKSON COUNTY, MISSOURI

SHEET NUMBER
 1 of 1

General Utility Easement Vacation Description

All that part of Lot 4E, CORRECTED SUMMIT ORCHARD, LOTS 4A-4E, a subdivision of land in Lee's Summit, Jackson County, Missouri, recorded as Document No. 2019E00684481, and being more particularly described as follows:

The South 10 feet of the North 30 feet of said Lot 4E.

Certification

I, Kirk R. Baldwin, hereby certifies that the above written described was prepared by me or under my direct supervision as a professional land survey in the State of Missouri.



Date: 11/18/19

Kirk R. Baldwin, MOPLS 2001015227
Anderson Engineering, Inc. LC 62
941 W. 141st Terr, Suite A
Kansas City, MO 64145



2019-418 --

RECEIVED

RECEIVED

DEC 13 2019

NOV 18 2019

Development Services

Development Services