

FAIRWAY VILLAGE LOT 5
 3751 N.E. Troon Drive,
 Lee's Summit, Jackson
 County, Missouri 64064

FAIRWAY VILLAGE LOT 5, AND TRACT 3, FAIRWAY VILLAGE, A SUBDIVISION OF
 LEE'S SUMMIT JACKSON COUNTY, MISSOURI.

A PORTION OF LOT 5 AND TRACT 3, FAIRWAY VILLAGE, A SUBDIVISION OF THE CITY OF JACKSON COUNTY, MISSOURI, IS BEING REDEVELOPED AS PLANNED COMMERCIAL AT THE CORNER OF TRACT 3, FAIRWAY VILLAGE, A SUBDIVISION OF THE CITY OF JACKSON COUNTY, MISSOURI, AND TRACT 3, FAIRWAY VILLAGE, A SUBDIVISION OF THE CITY OF JACKSON COUNTY, MISSOURI. THE REDEVELOPMENT SHALL BE IN ACCORDANCE WITH THE ZONING ORDINANCES OF THE CITY OF JACKSON COUNTY, MISSOURI, AND THE CITY OF JACKSON COUNTY, MISSOURI. THE REDEVELOPMENT SHALL BE IN ACCORDANCE WITH THE ZONING ORDINANCES OF THE CITY OF JACKSON COUNTY, MISSOURI, AND THE CITY OF JACKSON COUNTY, MISSOURI. THE REDEVELOPMENT SHALL BE IN ACCORDANCE WITH THE ZONING ORDINANCES OF THE CITY OF JACKSON COUNTY, MISSOURI, AND THE CITY OF JACKSON COUNTY, MISSOURI.

LEGEND

- EXISTING REBAR
- SET 1/2" REBAR & PLASTIC CAP
- NO PLS #1008

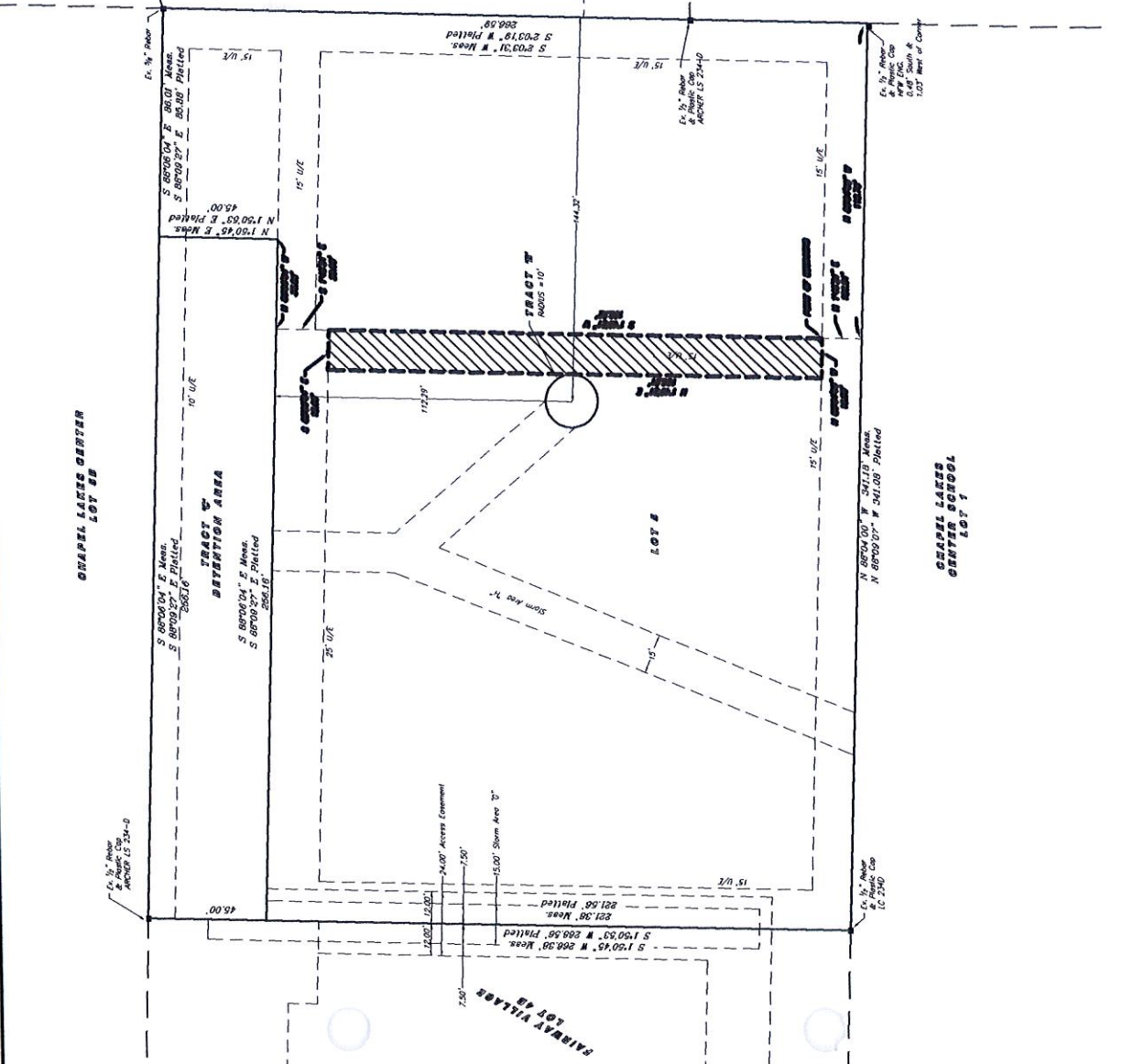
SCALE: 1"=20'
 DATE: FEBRUARY 25, 2016

2016-047 -
RECEIVED

MAR 04 2016

Thomas Blomms
 Area Supervisor
 3800 Robison Pike Road
 P.O. Box 201
 Lees Summit, Missouri 64063
 (816) 424-1337 - 2004@lscc.com

Planning & Codes Admin



EASEMENT TO VACATE.

A PORTION OF A 15.00 FOOT WIDE UTILITY EASEMENT DESCRIBED AS FOLLOWS:
COMMENCING AT THE SOUTHEAST CORNER OF LOT 5, FAIRWAY VILLAGE, A SUBDIVISION IN THE CITY OF
LEE'S SUMMIT, JACKSON COUNTY, MISSOURI; THENCE N 88°04'00"W ALONG THE SOUTH LINE OF LOT 5 FOR
118.73 FEET; THENCE N 1°49'21"E FOR 15.00 FEET FOR THE POINT OF BEGINNING; THENCE N 88°04'00"W
FOR 15.00 FEET; THENCE N 1°49'21"E FOR 186.51 FEET; THENCE S 88°06'04"E FOR 15.00 FEET; THENCE
S 1°49'21"W FOR 186.52 FEET TO THE POINT OF BEGINNING.

-2016-047-

RECEIVED

MAR 04 2016

Planning & Codes Admin