

**CONFLUENCE**

LANDSCAPE ARCHITECT / PLANNER  
1011 W. SUMMIT STREET  
ST. LOUIS, MISSOURI 63101  
PH: 314.241.1277  
WWW.CONFLUENCEARCHITECTS.COM

ARCHITECT (COMMERCIAL)  
JULIAN M. MILLER ARCHITECTS  
2003 W. 11TH AVENUE, KANSAS CITY, MO  
PH: 816.241.1277  
WWW.JULIANMILLERARCHITECTS.COM

ARCHITECT (RESIDENTIAL)  
JULIAN M. MILLER & ASSOCIATES  
2003 W. 11TH AVENUE, KANSAS CITY, MO  
PH: 816.241.1277  
WWW.JULIANMILLERARCHITECTS.COM

CIVIL ENGINEER  
GILSON ASSOCIATES  
1011 W. SUMMIT STREET  
ST. LOUIS, MISSOURI 63101  
PH: 314.241.1277  
WWW.GILSONASSOCIATES.COM

**NLV - PHASE II**  
LONGVIEW BLVD AND FASCINATION DR  
LEE'S SUMMIT, MISSOURI

10/15/2018 - New Office Development - Phase II

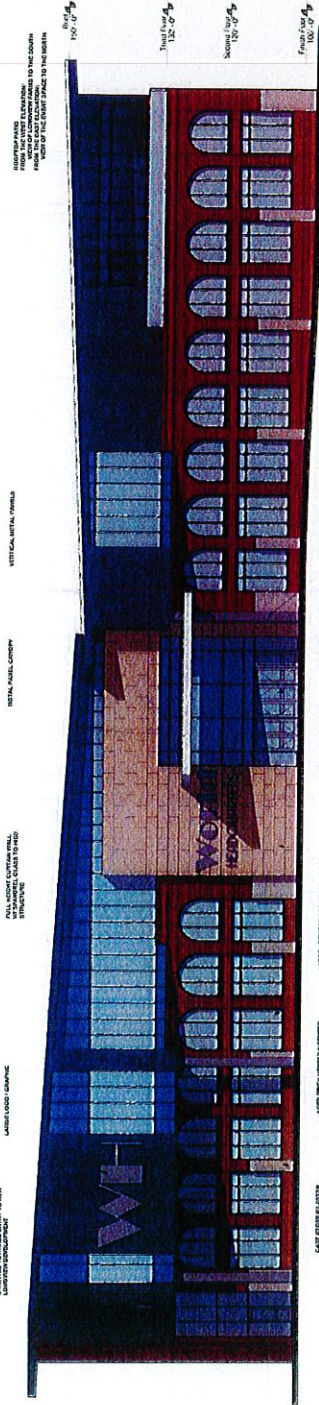
DEVELOPER  
ESTATE DEVELOPMENT  
1011 W. SUMMIT STREET  
ST. LOUIS, MISSOURI 63101  
PH: 314.241.1277

SCHEDULE

| NO. | DATE       | DESCRIPTION                                    |
|-----|------------|--|
| 1   | 10/15/2018 | 10/15/2018 - New Office Development - Phase II |

ELEVATIONS

A-04



**8. EXTERIOR ELEVATION - BUILDING F - WEST** SCALE 1/8" = 1'-0"

RECEIVED

JUL 24 2018

Development Services

-2018-081-



**EXTERIOR ELEVATION -**

SCALE 1/8" = 1'-0"