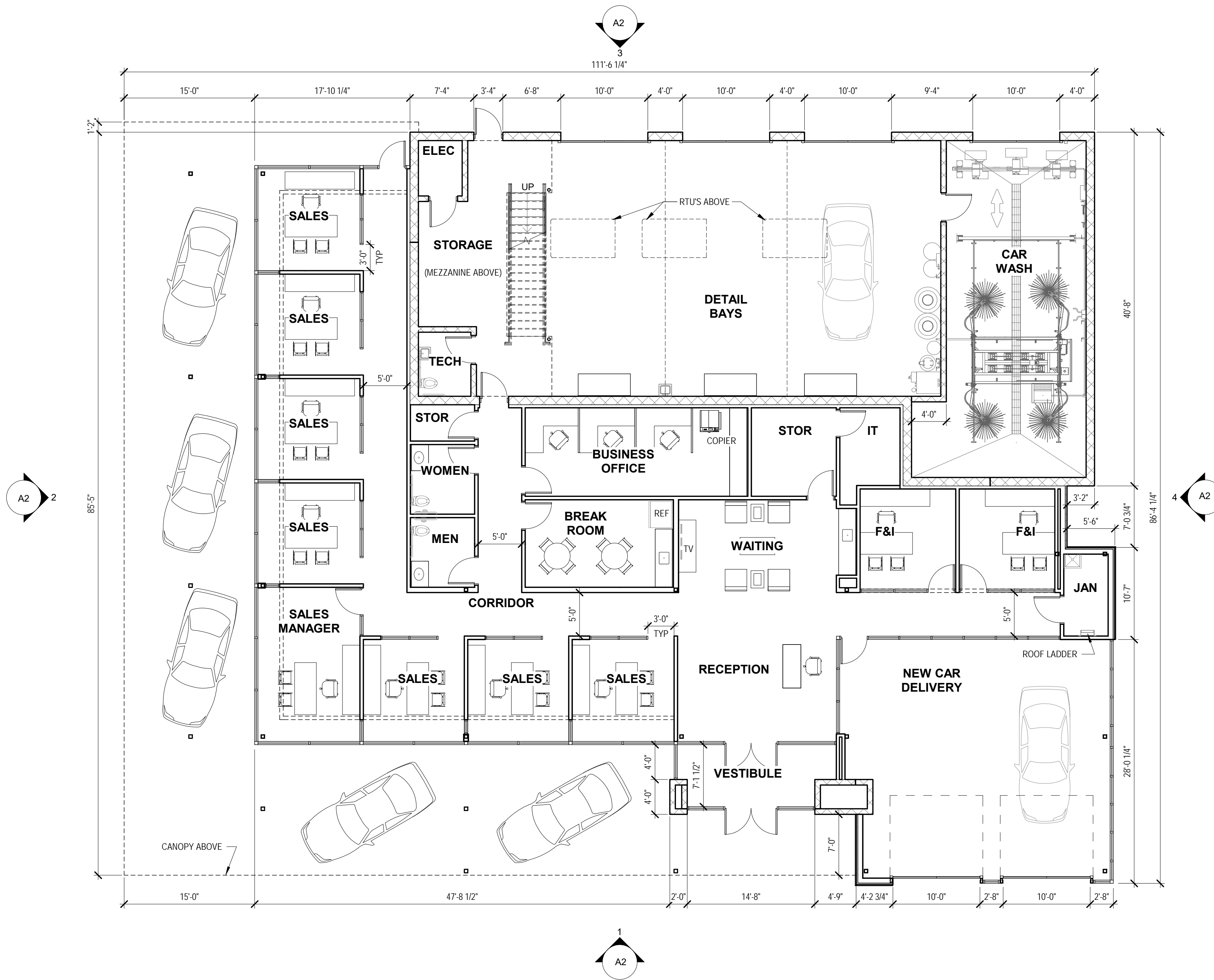


Aristocrat Pre-Owned Sales Building

New Construction

Soave Automotive Group

Lee's Summit, MO



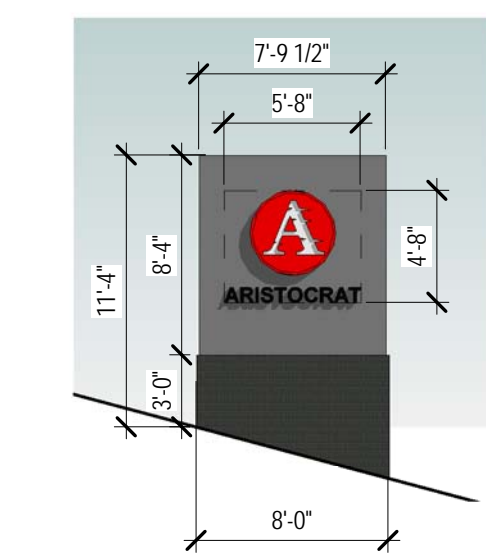


MATERIALS

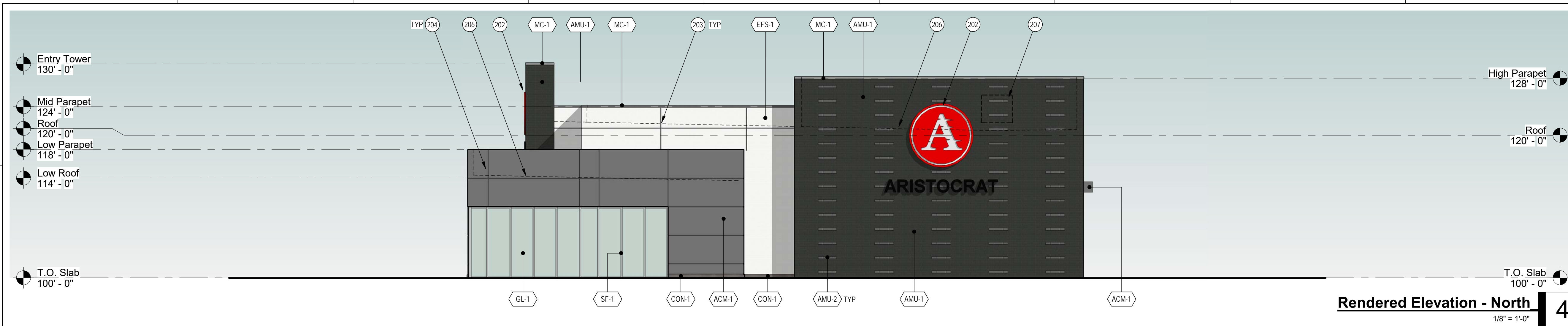
ACM-1	ALUMINUM WALL PANEL MANUFACTURER: ALPOLIC COLOR/FINISH: MICA MFS GREY
AMU-1	ARCHITECTURAL MASONRY UNIT 4 X 16 RUNNING BOND MANUFACTURER: YORK BUILDING PRODUCTS COLOR/FINISH: GEMSTONE - MNK (GLOSSY)
AMU-2	ARCHITECTURAL MASONRY UNIT 4 X 16 RUNNING BOND MANUFACTURER: YORK BUILDING PRODUCTS COLOR/FINISH: GEMSTONE - MNK (MATT)
CON-1	CAST IN PLACE CONCRETE WALL CURB COLOR/FINISH: TBD
ED-1	WIDES STILE ALUMINUM STOREFRONT DOOR MANUFACTURER: KAWNEER COLOR/FINISH: (MATCH SF-1 AND GL-1)
ED-2	FLUSH HOLLOW CORE STEEL DOOR W/ HIGH PERFORMANCE COATING COLOR/FINISH: TBD
ED-3	OVERHEAD GLASS AND ALUMINUM FRAME SECTIONAL DOOR MANUFACTURER: TBD COLOR/FINISH: (MATCH SF-1 AND GL-1)
EFS-1	EXTERIOR INSULATED FINISH SYSTEM (EIFS) MANUFACTURER: TBD COLOR/FINISH: FINE TEXTURE - 612 MOONLIGHT
GL-1	CLEAR INSULATED LOW-E GLAZING MANUFACTURER: AGC ENERGY SELECT 40
MC-1	PRE-FINISHED METAL COPING MFG. MANUFACTURER: BERRIDGE MFG. COLOR/FINISH: LEAD-COTE
SF-1	ALUMINUM STOREFRONT SYSTEM MANUFACTURER: KAWNEER COLOR/FINISH: CLEAR ANODIZED

KEYNOTES

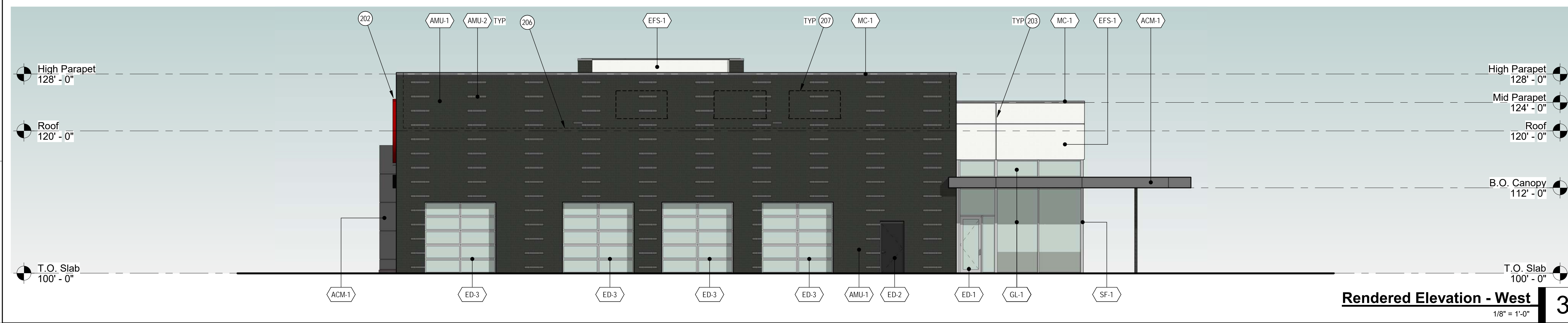
201	STRUCTURAL COLUMN WITH HIGH PERFORMANCE COATING COLOR/FINISH: TBD
202	WALL MOUNTED BUILDING SIGNAGE BY OWNER
203	EIFS V' GROOVE REVEAL
204	ACM JOINT / REVEAL
205	TRANSLUCENT FILM APPLIED TO LOWER PORTION OF GLAZING
206	LINE OF ROOF BEYOND PARAPET
207	ROOF TOP UNIT (RTU) BEYOND PARAPET



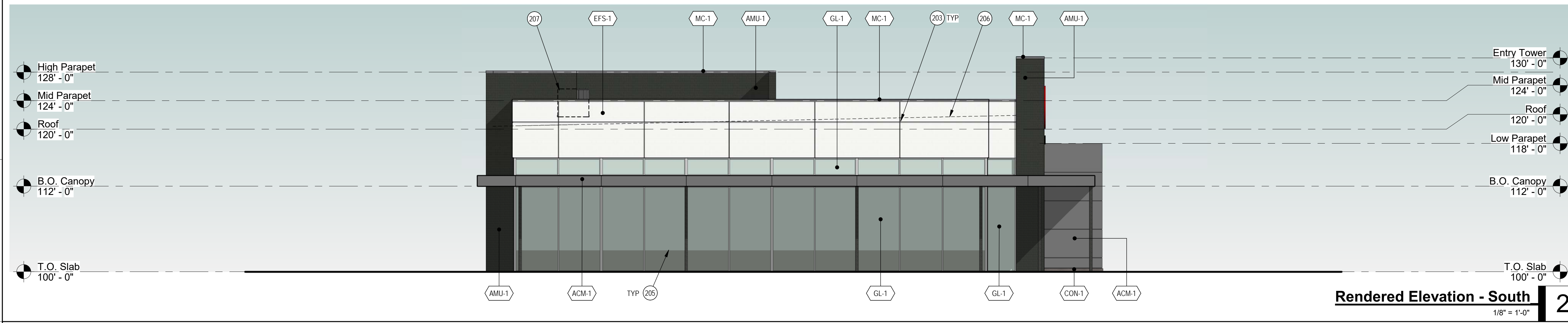
Monument Sign
 1/8" = 1'-0"



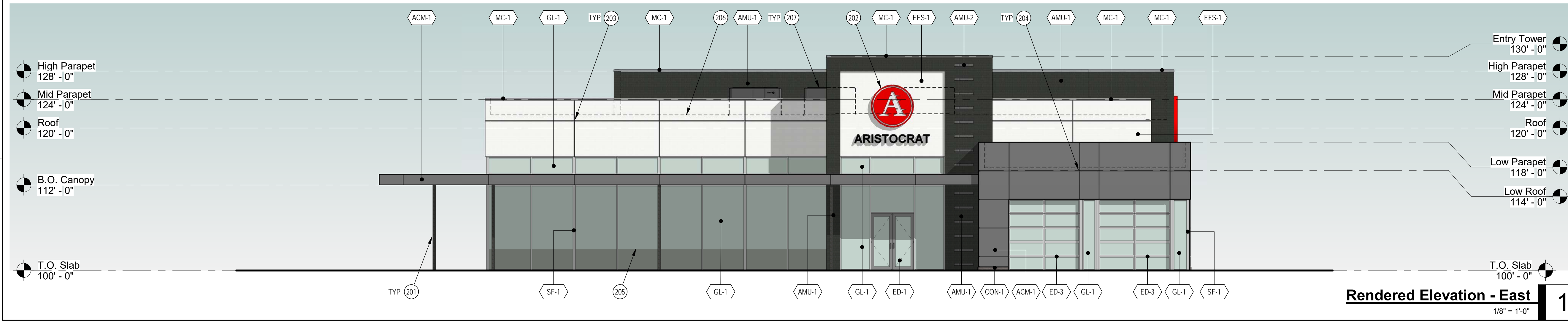
Rendered Elevation - North 4
 1/8" = 1'-0"



Rendered Elevation - West 3
 1/8" = 1'-0"



Rendered Elevation - South 2
 1/8" = 1'-0"



Rendered Elevation - East 1
 1/8" = 1'-0"

Aristocrat Pre-Owned Sales Building

New Construction

Soave Automotive Group

Lee's Summit, MO

Revisions:

Project #: 180508
Preliminary Development Plan Resubmittal
 07/15/2019



Aristocrat Pre-Owned Sales Building

New Construction

Soave Automotive Group

Lee's Summit, MO

Revisions:

Revisions:

Project #: 180508

**Preliminary Development
Plan Resubmittal**
07/15/2019

EXTERIOR EXHIBITS