

THE RESIDENCES AT ECHELON

Preliminary Development Plan

SEC-30 TWP-47 RNG-31 W

LEE'S SUMMIT, JACKSON COUNTY, MISSOURI

RECEIVED
SEP 20 2016

Planning & Codes Admin



PROPERTY DESCRIPTION



Preliminary Development Plan
SCALE: 1" = 40'

NUMBER OF SHEETS:
C-000 - SITE PLAN
C-100 - 40'-100' CONFORMANCE OVERLAY
C-200 - ZONING PLAN
C-300 - UTILITY PLAN

SITE INFORMATION

Total Area: 21.58 acres
Parcel ID: 1153.0799
Platting/Owner: 2012/12/14
Planning/Owner: 441 S. 10th St. (SMA)
City: Lee's Summit
County: Jackson
Assessor's Parcel ID: 200
Assessor's District: 100

Site Information Notes
The site and future development are shown on the existing sanitary sewer main located at the site and future development are shown on the site plan. The site plan shows the location of the sanitary sewer main and the location of the sanitary sewer main. The site plan shows the location of the sanitary sewer main and the location of the sanitary sewer main. The site plan shows the location of the sanitary sewer main and the location of the sanitary sewer main.

Site Information Notes
The site and future development are shown on the existing sanitary sewer main located at the site and future development are shown on the site plan. The site plan shows the location of the sanitary sewer main and the location of the sanitary sewer main. The site plan shows the location of the sanitary sewer main and the location of the sanitary sewer main. The site plan shows the location of the sanitary sewer main and the location of the sanitary sewer main.

Final Plan: 10/15/2016
10/15/2016

-2016-149-

ALL PLANS TO BE PRINTED AT THE SCALE WITH THE UNIFIED DEVELOPMENT ORDINANCE ARTICLE 17 IN TERMS OF PLANS THICKNESS AND SHADE

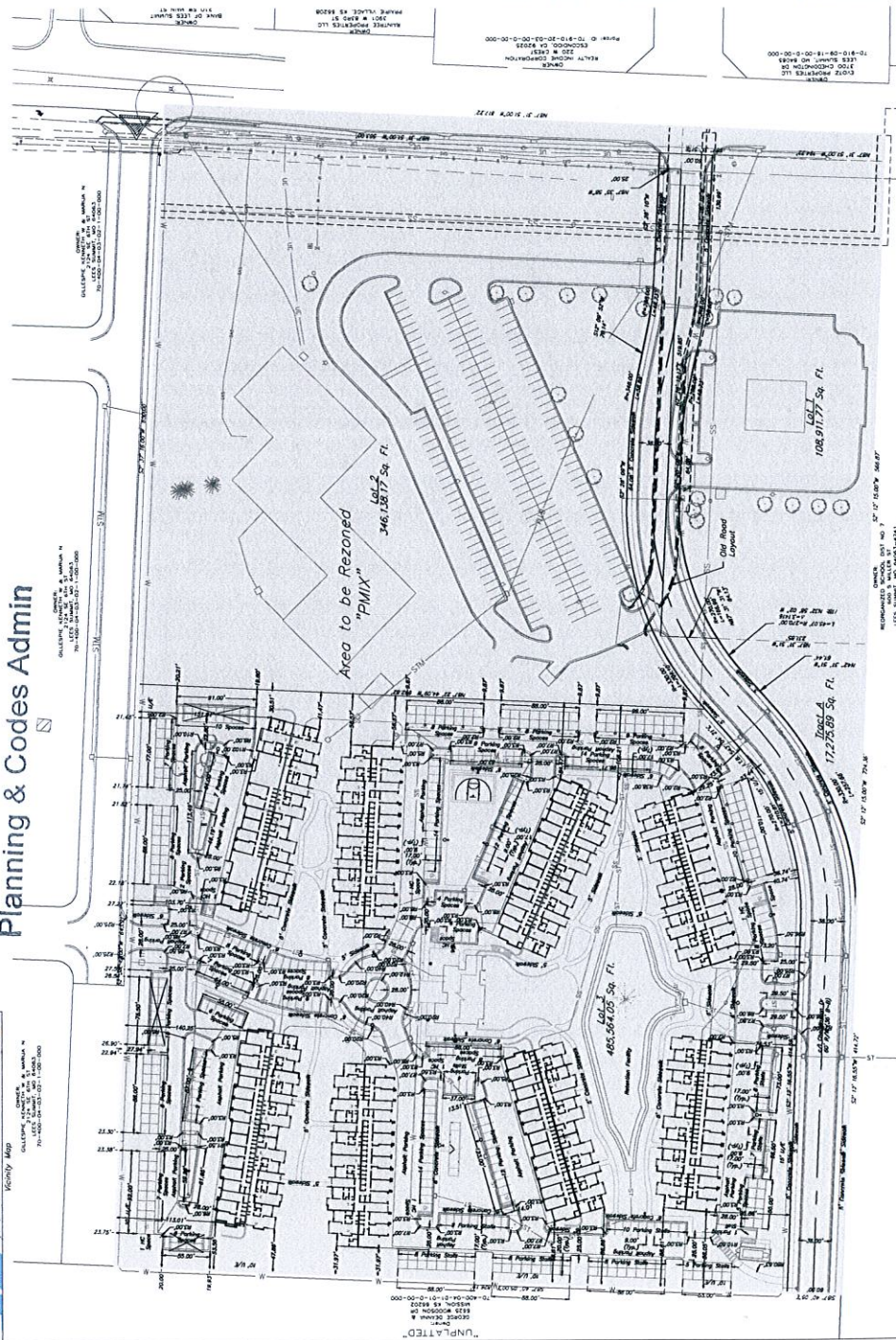
BY: GSP, INC.
ACCORDING TO EXHIBIT A TO THE ENVIRONMENTAL IMPACT STATEMENT OF APPROVED AND GAS UTILITIES. THE CITY OF LEE'S SUMMIT HAS REVIEWED AND APPROVED THIS PLAN.

UTILITY COMPANIES:

THE FOLLOWING LIST OF UTILITY COMPANIES IS PROVIDED FOR INFORMATION ONLY. WE DO NOT OFFER ANY GUARANTEE OR WARRANTY FOR THE ACCURACY OF THIS LIST. COMPLETE CONTACT INFORMATION FOR EACH UTILITY COMPANY IS LISTED. THE CONTRACTOR SHALL BE RESPONSIBLE FOR VERIFYING THE ACTUAL LOCATION OF EXISTING UTILITIES. THE CONTRACTOR SHALL NOTIFY THE UTILITY COMPANIES AND OBTAIN ANY NECESSARY PERMISSIONS PRIOR TO ANY CONSTRUCTION. THE CONTRACTOR SHALL NOTIFY THE CITY OF LEE'S SUMMIT PUBLIC WORKS DEPARTMENT AT 636-936-3443 AT LEAST 48 HOURS PRIOR TO ANY CONSTRUCTION. THE CITY OF LEE'S SUMMIT PUBLIC WORKS DEPARTMENT SHALL CONDUCT A VISUAL INSPECTION OF THE SITE PRIOR TO ANY CONSTRUCTION. THE CONTRACTOR SHALL NOTIFY THE CITY OF LEE'S SUMMIT PUBLIC WORKS DEPARTMENT AT 636-936-3443 AT LEAST 48 HOURS PRIOR TO ANY CONSTRUCTION. THE CITY OF LEE'S SUMMIT PUBLIC WORKS DEPARTMENT SHALL CONDUCT A VISUAL INSPECTION OF THE SITE PRIOR TO ANY CONSTRUCTION.

GENERAL NOTES

1. THE CITY OF LEE'S SUMMIT HAS REVIEWED AND APPROVED THIS PLAN. THE CITY OF LEE'S SUMMIT HAS REVIEWED AND APPROVED THIS PLAN. THE CITY OF LEE'S SUMMIT HAS REVIEWED AND APPROVED THIS PLAN. THE CITY OF LEE'S SUMMIT HAS REVIEWED AND APPROVED THIS PLAN. THE CITY OF LEE'S SUMMIT HAS REVIEWED AND APPROVED THIS PLAN.



UNPLATTED
PROJECT NUMBER: 1153.0799
DATE: 10/15/2016
SCALE: 1" = 40'
DRAWN BY: GSP, INC.
CHECKED BY: GSP, INC.
APPROVED BY: GSP, INC.
CITY OF LEE'S SUMMIT, MISSOURI
PLANNING & CODES ADMINISTRATION
100 S. 10th St., Lee's Summit, MO 64083
636-936-3443
636-936-3444
636-936-3445