

Woodside Ridge Pool Preliminary Development Plan

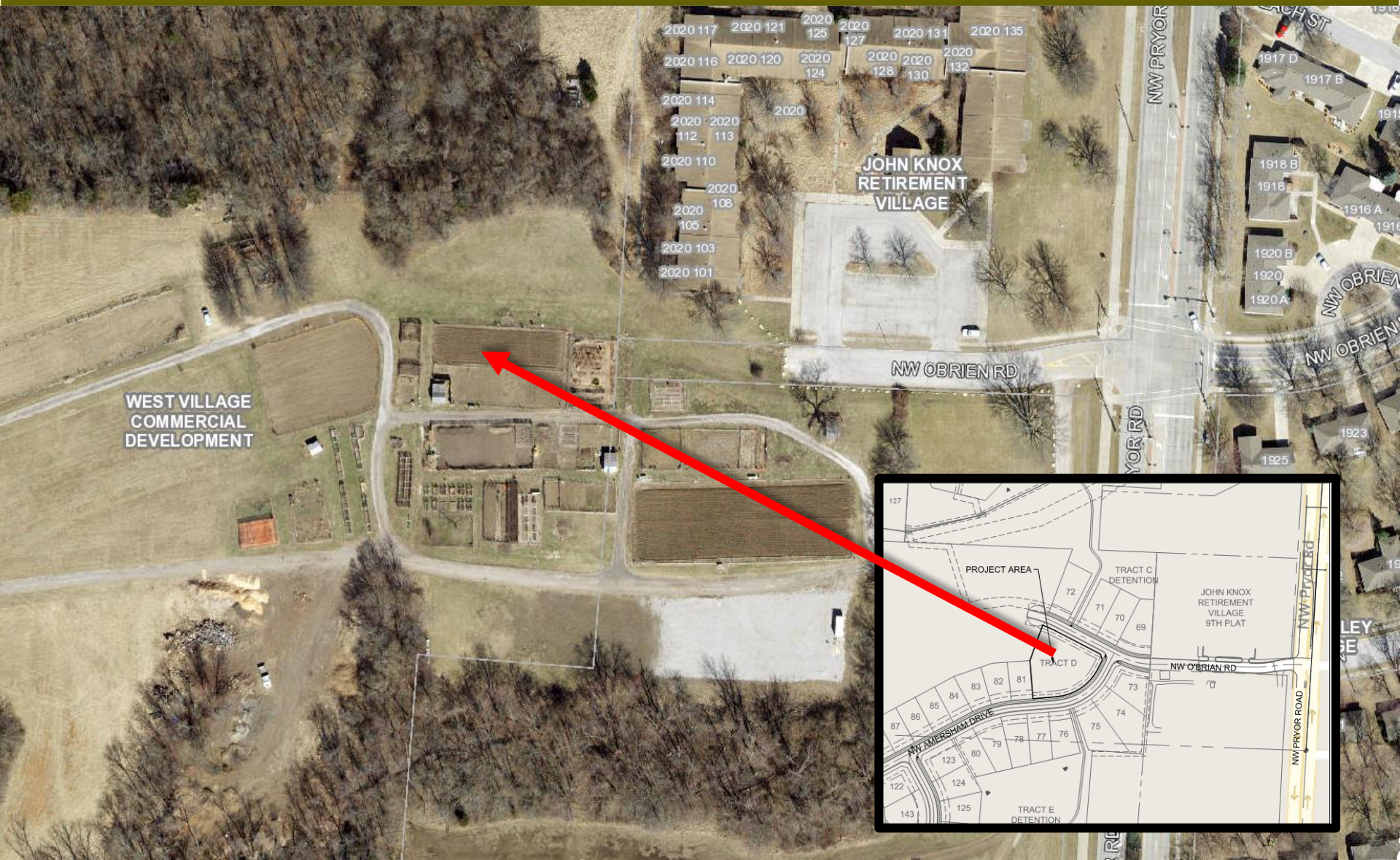
PL20129-351



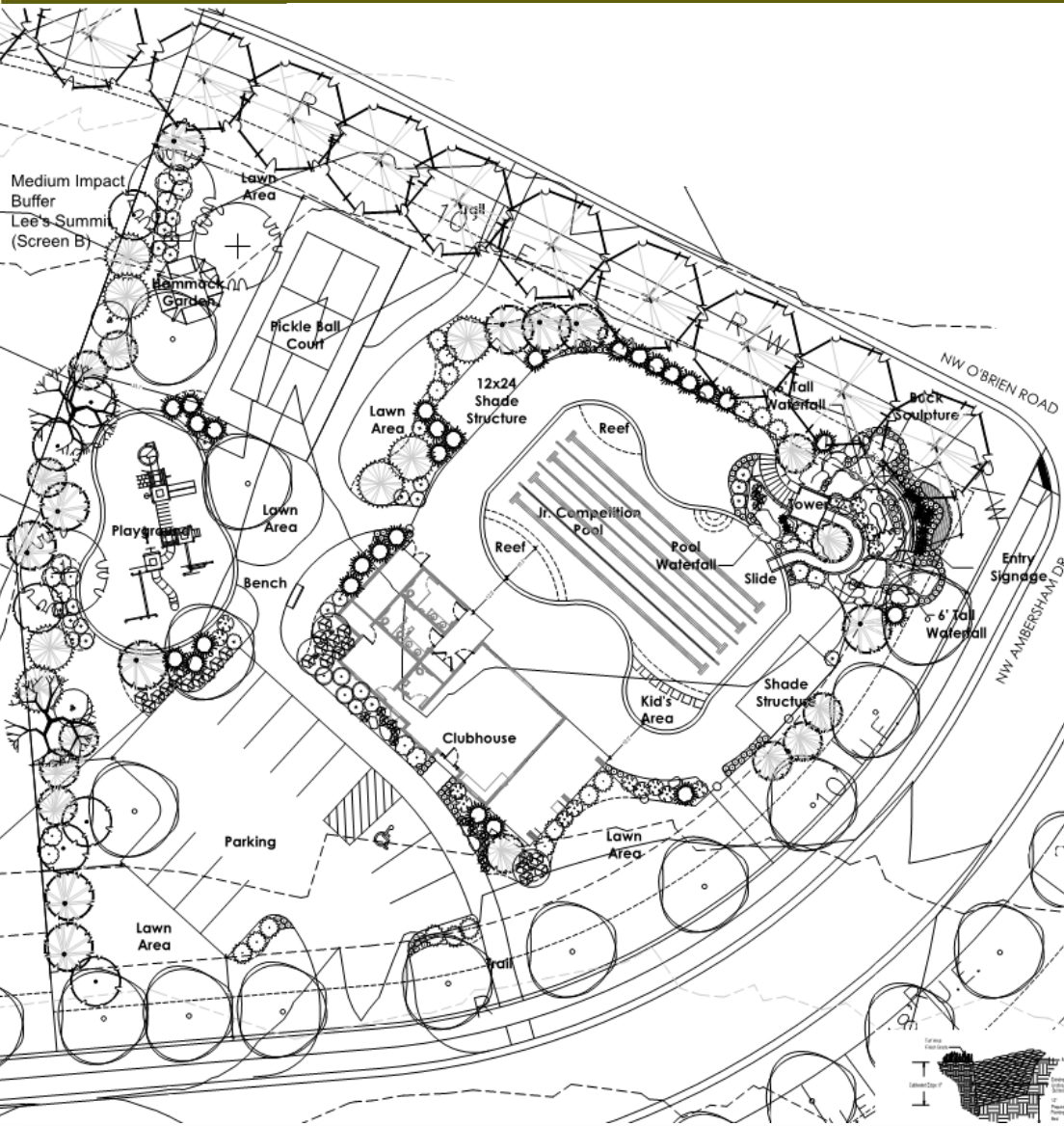
LEE'S SUMMIT
MISSOURI

Yours Truly





Aerial Map



- **Parking**
 - 12 provided
 - 12 required

- **Impervious**
 - 43%

- **Structure Design**
 - 1 Club House
 - 27' 5"
 - 1 Story

- **Comprehensive Plan**
 - Mix Use-John Knox Village

- **Zoning**
 - RP-3 (Planned Residential Mixed Use District)



Project Information



Elevations

With the condition of approval below and the conditions outlined in the staff letter the application meets the requirements of the UDO and Design & Construction Manual.

- A modification shall be granted to the required 50' sports court setback along the west property line, to allow a 33' sports court setback along the west property line.