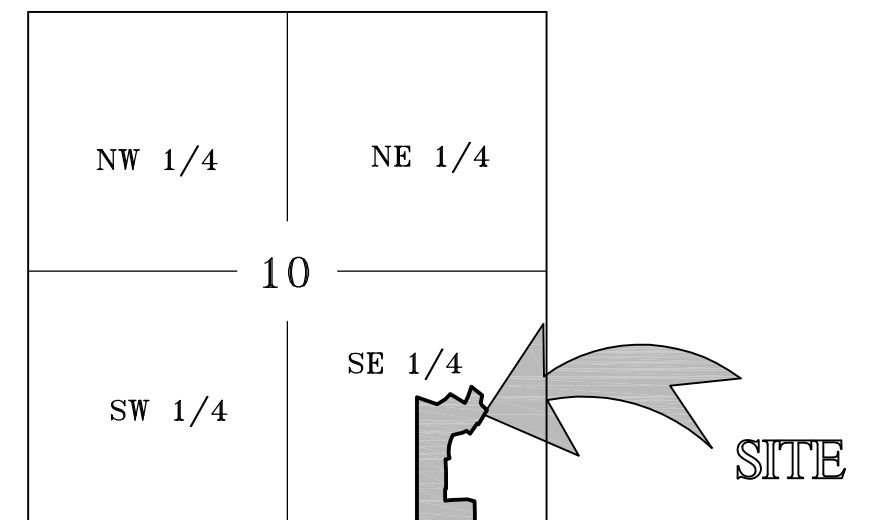
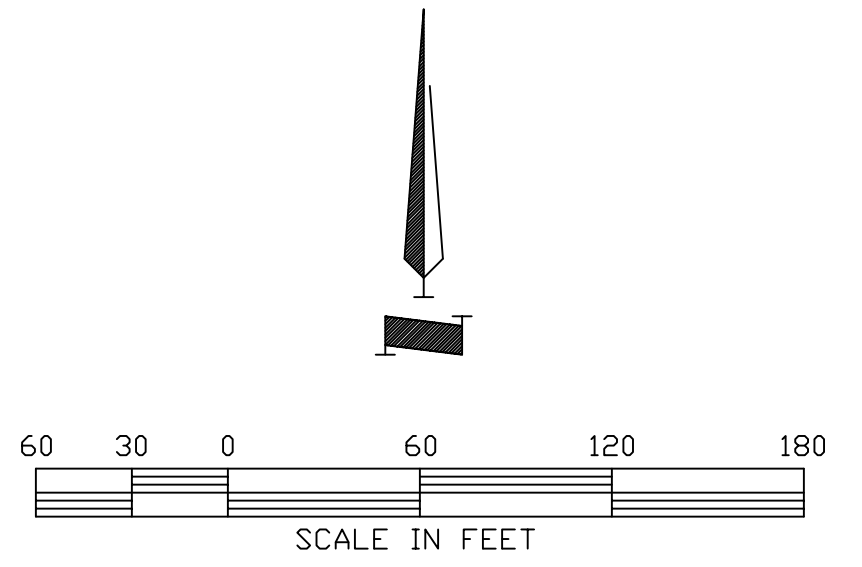
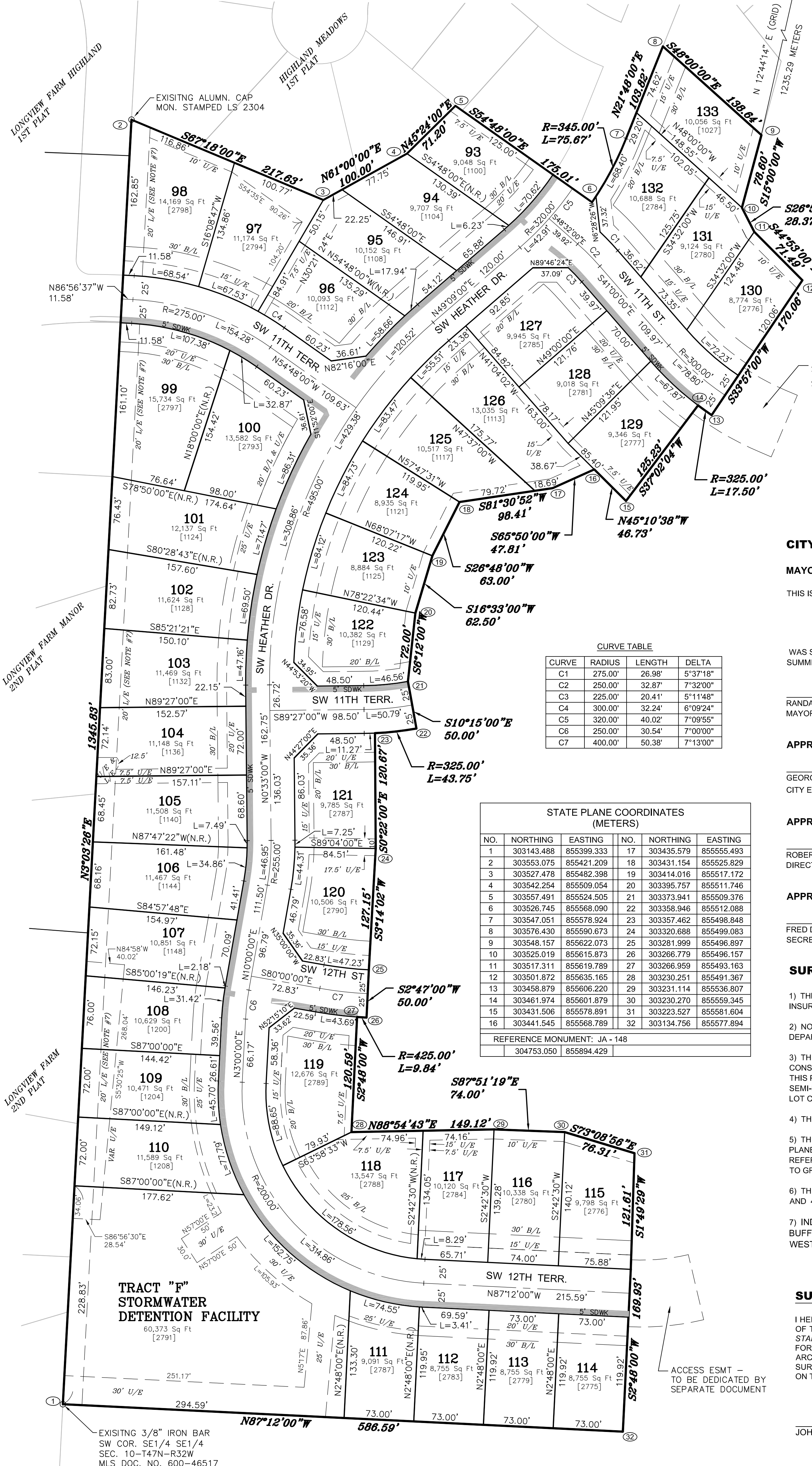


FINAL PLAT OF
HIGHLAND MEADOWS 4TH PLAT
 LOTS 93 THRU 133 & TRACT F

BEING IN THE SE 1/4 OF SECTION 10, T.47N, R.32W
 LEE'S SUMMIT, JACKSON COUNTY, MISSOURI



VICINITY MAP
 SEC 10-T47N-R32W
 NOT TO SCALE



CURVE TABLE

CURVE	RADIUS	LENGTH	DELTA
C1	275.00'	26.98'	5°37'18"
C2	250.00'	32.87'	7°32'00"
C3	225.00'	20.41'	5°11'48"
C4	300.00'	32.24'	6°09'24"
C5	320.00'	40.02'	7°09'55"
C6	250.00'	30.54'	7°00'00"
C7	400.00'	50.38'	7°13'00"

STATE PLANE COORDINATES (METERS)

NO.	NORTHING	EASTING	NO.	NORTHING	EASTING
1	303143.488	855399.333	17	303435.579	855555.493
2	303553.075	855421.209	18	303431.154	855525.829
3	303527.478	855482.398	19	303414.016	855517.172
4	303542.254	855509.054	20	303395.757	855511.746
5	303557.491	855524.505	21	303373.941	855509.376
6	303526.745	855568.090	22	303358.946	855512.088
7	303547.051	855578.824	23	303357.462	855498.848
8	303576.430	855590.673	24	303320.688	855498.083
9	303548.157	855622.073	25	303281.999	855496.897
10	303525.019	855615.873	26	303266.779	855496.157
11	303517.311	855619.789	27	303266.959	855493.163
12	303501.872	855635.165	28	303230.251	855491.367
13	303458.879	855606.220	29	303231.114	855536.807
14	303461.974	855601.879	30	303230.270	855559.345
15	303431.506	855578.891	31	303223.527	855581.604
16	303441.545	855568.789	32	303134.756	855577.894

REFERENCE MONUMENT: JA - 148
 304753.050 855894.429

- LEGEND**
- B/L BUILDING LINE
 - N.R. NON-RADIAL BEARING
 - S.F. SQUARE FEET
 - U/E UTILITY EASEMENT
 - D/E PRIVATE DRAINAGE EASEMENT
 - L/E LANDSCAPE EASEMENT
 - (X) STATE PLANE COORDINATE

CITY OF LEE'S SUMMIT:
MAYOR AND CITY COUNCIL CERTIFICATION:
 THIS IS TO CERTIFY THAT THE ACCOMPANYING PLAT OF
 "HIGHLAND MEADOWS 4TH PLAT, LOTS 93 THRU 133 & TRACT F"

WAS SUBMITTED TO AND DULY APPROVED BY THE MAYOR AND CITY COUNCIL OF THE CITY OF LEE'S SUMMIT, MISSOURI THIS _____ DAY OF _____ 2016, BY ORDINANCE NO. _____

RANDALL L. RHOADS DATE DENISE R. CHISUM, MMC DATE
 MAYOR CITY CLERK

APPROVED: PUBLIC WORKS / ENGINEERING
 GEORGE M. BINGER III, P.E. DATE
 CITY ENGINEER

APPROVED: PLANNING & CODES ADMINISTRATION
 ROBERT G. MCKAY, AICP DATE
 DIRECTOR

APPROVED: PLANNING COMMISSION
 FRED DEMORO DATE
 SECRETARY

- SURVEYOR'S NOTES:**
- THIS PROPERTY IS NOT WITHIN THE BOUNDARIES OF THE 100 YEAR FLOOD ZONE PER FLOOD INSURANCE RATE MAP COMMUNITY PANEL NUMBER 29095C0293F, DATED SEPTEMBER 29TH, 2006.
 - NO ABANDONED OIL OR GAS WELL IS IDENTIFIED ON THIS DRAWING. LOCATION PER MISSOURI DEPARTMENT OF NATURAL RESOURCES PERMITTED OIL AND GAS DATABASE, DATED AUGUST 2014.
 - THE FOLLOWING STANDARD MONUMENTATION WILL BE SET UPON COMPLETION OF THE CONSTRUCTION ACTIVITIES WITH THIS PLAT OR WITHIN 12 MONTHS FOLLOWING THE RECORDING OF THIS PLAT, WHICH EVER IS EARLIER. SEMI-PERMANENT MONUMENTS: 1/2" IRON BAR WITH PLASTIC CAP STAMPED "HDR INC" SET AT ALL LOT CORNERS. CURBS ARE NOTCHED AT THE PROLONGATION OF EACH INTERIOR LOT LINE.
 - THE PROPERTY IS ZONED R-1.
 - THE BEARINGS AND COORDINATES SHOWN ON THIS PLAT ARE BASED UPON THE MISSOURI STATE PLANE COORDINATE SYSTEM, WEST ZONE, UTILIZING JACKSON COUNTY, MISSOURI GEOGRAPHIC REFERENCE SYSTEM MONUMENTS JA-148 (2003 ADJUSTMENT) AND ARE MODIFIED FROM STATE PLANE TO GROUND COORDINATES BY APPLYING A GRID SCALE FACTOR OF 0.9999020.
 - THE PROPERTY SHOWN HEREON IS CLASSIFIED AS URBAN PROPERTY BY 10 CSR 30-2.030 AND 4 CSR 30-16.030.
 - INDIVIDUAL LOT OWNERS SHALL BE RESPONSIBLE FOR MAINTAINING THE LANDSCAPE BUFFER WITHIN THE 20' TREE PRESERVATION AND LANDSCAPE EASEMENT ALONG THE WEST PROPERTY LINE.

SURVEYOR'S DECLARATION:
 I HEREBY DECLARE THAT WE HAVE PERFORMED A SURVEY AND PREPARED THE ACCOMPANYING PLAT OF THE PREMISES DESCRIBED HEREON WHICH MEET OR EXCEED THE CURRENT "MISSOURI MINIMUM STANDARDS FOR PROPERTY BOUNDARY SURVEYS" AS JOINTLY ADOPTED BY THE MISSOURI BOARD FOR ARCHITECTS, PROFESSIONAL ENGINEERS, PROFESSIONAL LAND SURVEYORS, AND LANDSCAPE ARCHITECTS AND THE MISSOURI DEPARTMENT OF NATURAL RESOURCES, DIVISION OF GEOLOGICAL SURVEY AND RESOURCES ASSESSMENT AND THAT THE RESULTS OF SAID SURVEY ARE REPRESENTED ON THIS PLAT TO THE BEST OF MY PROFESSIONAL KNOWLEDGE AND BELIEF.

JOHNNY YAKLE, PLS-2001001917 DATE

DRAWING NO. 204875	SHEET NO. 2 OF 2	FINAL PLAT HIGHLAND MEADOWS 4TH PLAT LOTS 93 THRU 133 & TRACT F LEE'S SUMMIT, JACKSON COUNTY, MISSOURI	 HDR ENGINEERING, INC. 3741 N.E. TROON DRIVE LEE'S SUMMIT, MO 64064 816-347-1100 • FAX 816-347-1197	NO. DATE BY REVISION	EXTERNAL REFERENCE
		HIGHLAND MEADOWS DEVELOPERS, LLC 16500 S. STATE ROAD 291 GREENWOOD, MISSOURI 64034		1 11-02-2015 JFJ REVISIONS PER CITY COMMENTS 2 11-16-2015 JFJ ADDED UTILITY EASEMENT ON LOTS 105-110 & TRACT F 3 10-19-2017 JFJ ADDED UTILITY EASEMENTS	RANGE REFERENCE

DRAWING: 204875-PLS-4TH-HIGHLAND_MEADOWS.dwg DATE: Oct 16, 2017 - 2:21PM