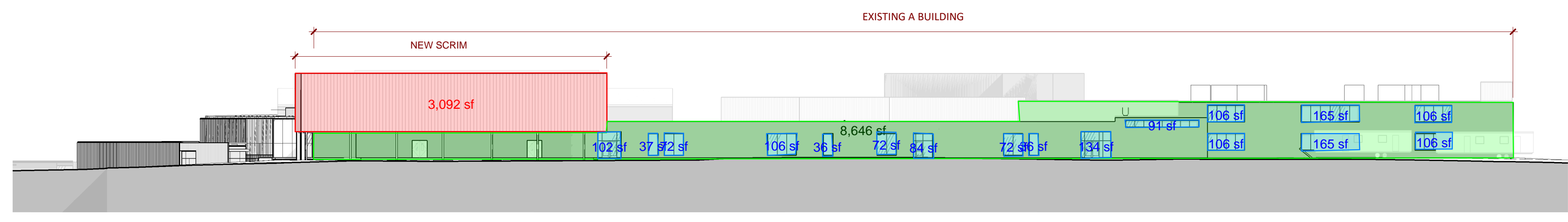


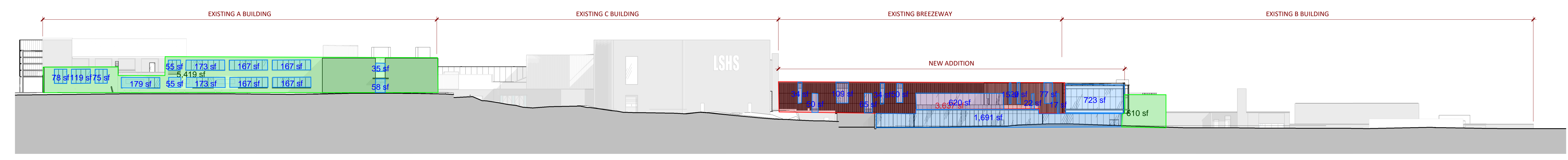
18 | 17 | 16 | 15 | 14 | 13 | 12 | 11 | 10 | 9 | 8 | 7 | 6 | 5 | 4 | 3 | 2 | 1

METAL (3,092 sf) - 26%  
 BRICK (7,050 sf) - 60%  
 GLAZING (1,596 sf) - 14%



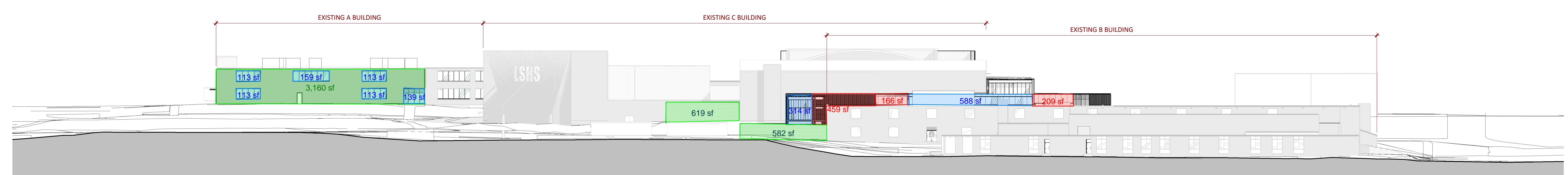
Overall Exterior Elevation - South M1  
 1/32" = 1'-0"

METAL (2,515 sf) - 21%  
 BRICK (4,356 sf) - 36%  
 GLAZING (5,209 sf) - 43%



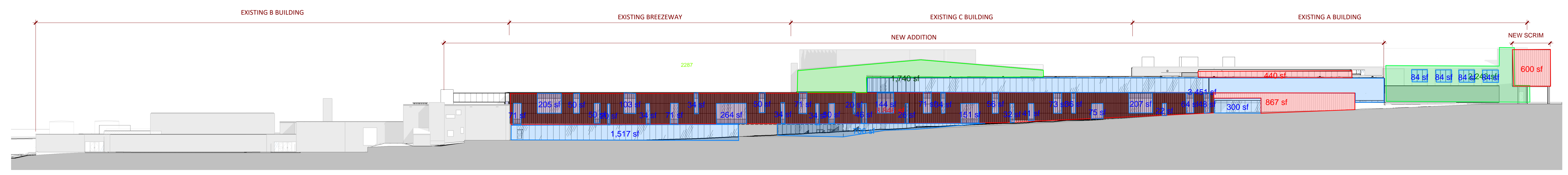
Overall Exterior Elevation - East H1  
 1/32" = 1'-0"

METAL (834 sf) - 14%  
 BRICK (3,611 sf) - 59%  
 GLAZING (1,652 sf) - 27%



Overall Exterior Elevation - North E1  
 1/32" = 1'-0"

METAL (8,466 sf) - 41%  
 BRICK (3,647 sf) - 18%  
 GLAZING (8,597 sf) - 41%



Overall Exterior Elevation - West A1  
 1/32" = 1'-0"

Lee's Summit High School

400 SE Blue Pkwy  
 Lee's Summit, MO 64063

owner:  
 Lee's Summit R-7 School District  
 301 NE Tudor Road  
 Lee's Summit, MO 64086

architect:  
 Gould Evans  
 4200 Pennsylvania Avenue  
 Kansas City, MO 64111  
 816.931.6555 voice  
 www.goulddevans.com

structural engineer:  
 Bob D. Campbell & Company, Inc.  
 4338 Bellevue  
 Kansas City, MO 64111  
 816.531.4144

civil engineer:  
 Kaw Valley Engineering  
 14700 West 124th Terrace  
 Lenexa, KS 66215  
 913.485.0318

MEP/EJ/Code:  
 Henderson Engineers  
 8345 Lenexa Drive, Suite 300  
 Lenexa, KS 66214  
 816.742.5000

UNLESS A PROFESSIONAL SEAL WITH SIGNATURE AND DATE IS AFFIXED, THIS DOCUMENT IS PRELIMINARY AND IS NOT INTENDED FOR CONSTRUCTION, RECORDING PURPOSES OR IMPLEMENTATION.

NOT FOR CONSTRUCTION

Architectural Corporation  
 Missouri License No. - 2918027991  
 Jane Doe Date: MM/DD/YYYY  
 Architect License No. A-00000000

REVISIONS		
Number	DESCRIPTION	DATE

PROJECT NO: 0119-0100  
 DATE: September 4, 2020

Overall Exterior Elevations

A202

Design Development

18' 17' 16' 15' 14' 13' 12' 11' 10' 9' 8' 7' 6' 5' 4' 3' 2' 1'

# Lee's Summit High School

400 SE Blue Pkwy  
Lee's Summit, MO 64063

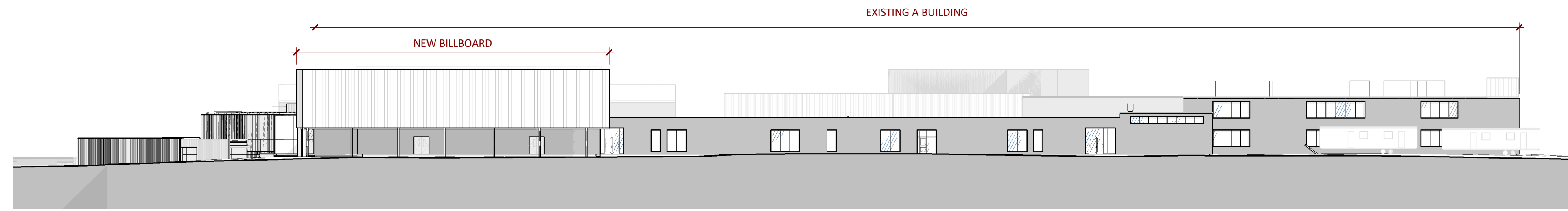
owner:  
Lee's Summit R-7 School District  
301 NE Tudor Road  
Lee's Summit, MO 64086

architect:  
Gould Evans  
4200 Pennsylvania Avenue  
Kansas City, MO 64111  
816.931.6555 voice  
www.gouldevans.com

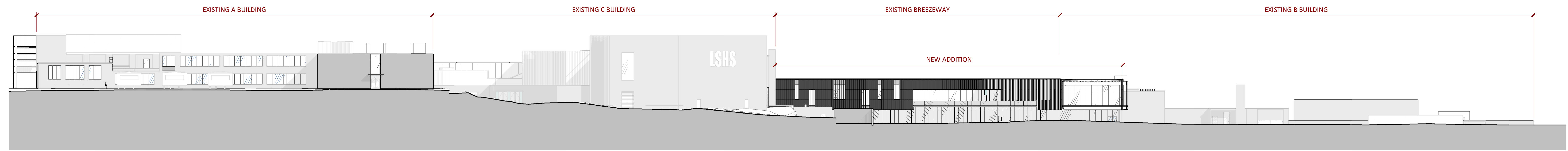
structural engineer:  
Bob D. Campbell & Company, Inc.  
4338 Belleview  
Kansas City, MO 64111  
816.531.4144

civil engineer:  
Kaw Valley Engineering  
14700 West 114th Terrace  
Lenexa, KS 66215  
913.485.0318

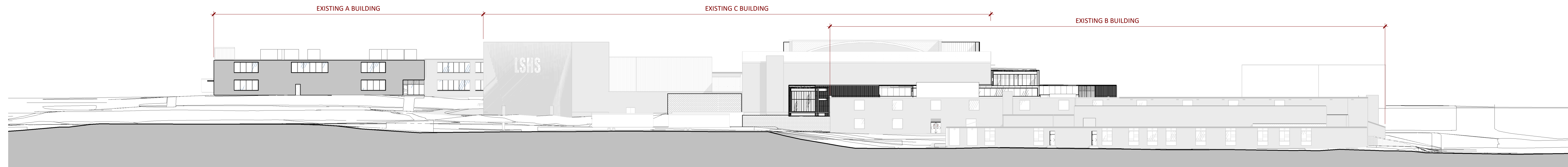
MEP/EJ/Code:  
Henderson Engineers  
8345 Lenexa Drive, Suite 300  
Lenexa, KS 66214  
816.742.5000



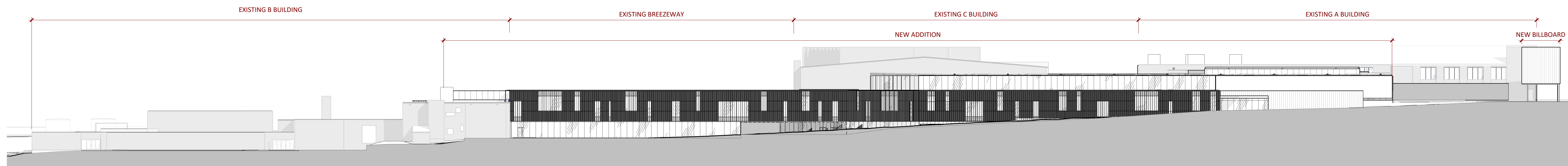
Overall Exterior Elevation - South M1  
1/32" = 1'-0"



Overall Exterior Elevation - East H1  
1/32" = 1'-0"



Overall Exterior Elevation - North E1  
1/32" = 1'-0"



Overall Exterior Elevation - West A1  
1/32" = 1'-0"

UNLESS A PROFESSIONAL SEAL WITH SIGNATURE AND DATE IS AFFIXED, THIS DOCUMENT IS PRELIMINARY AND IS NOT INTENDED FOR CONSTRUCTION RECORDING PURPOSES OR IMPLEMENTATION.

**NOT FOR CONSTRUCTION**

Architectural Corporation  
Missouri License No. - 2018027991  
Jane Doe Date: MM/DD/YYYY  
Architect License No. A-00000000

REVISIONS

Number	DESCRIPTION	DATE

PROJECT NO: 0119-0100  
DATE: September 4, 2020

Overall Exterior Elevations

**A202**

Design Development

18 | 17 | 16 | 15 | 14 | 13 | 12 | 11 | 10 | 9 | 8 | 7 | 6 | 5 | 4 | 3 | 2 | 1

P  
N  
M  
L  
K  
J  
H  
G  
F  
E  
D  
C  
B  
A