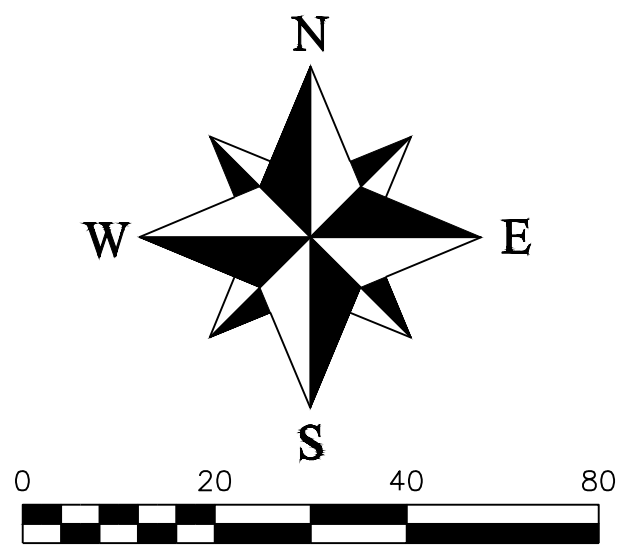
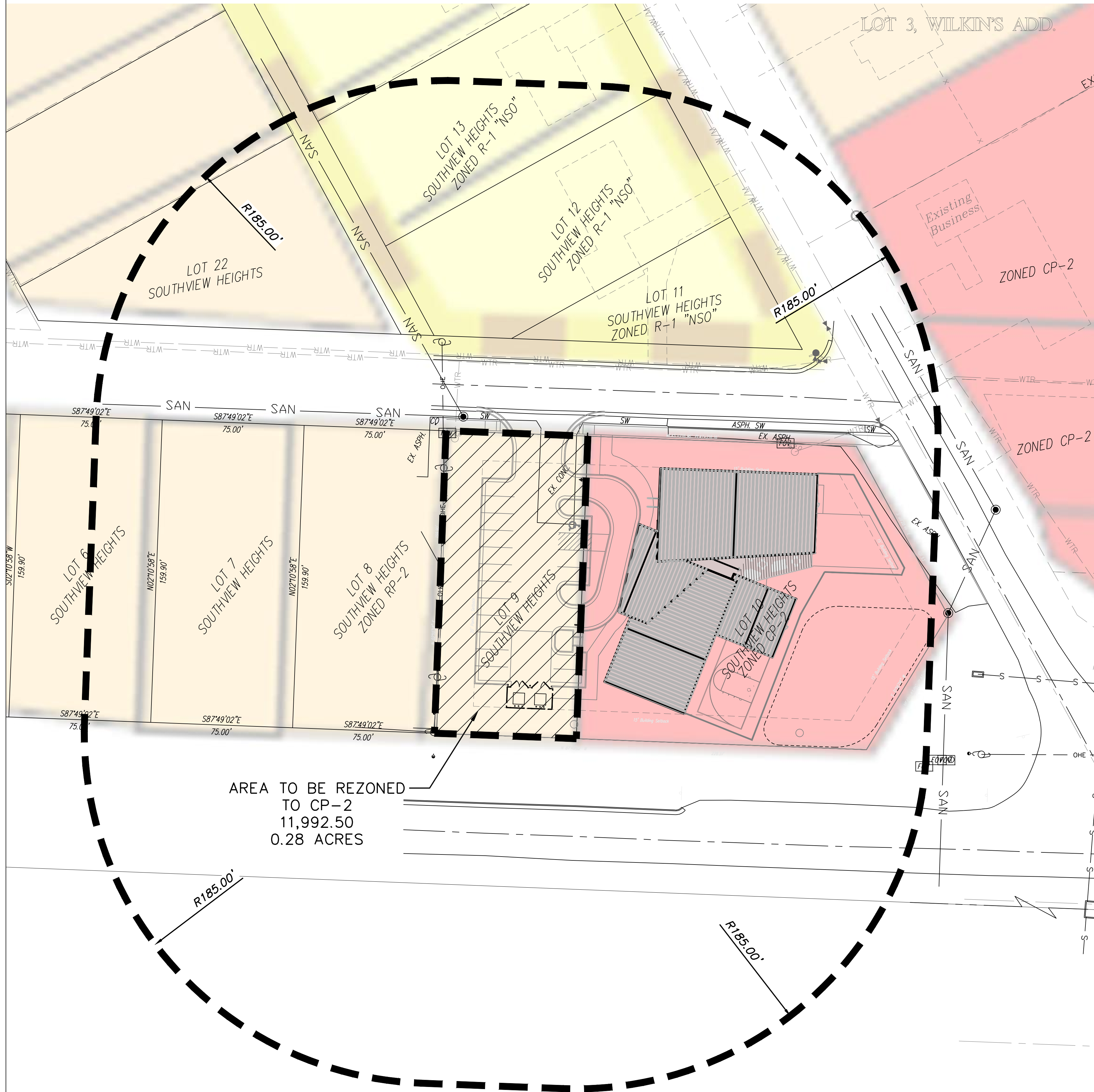


REZONING EXHIBIT

PRO DEO Lots 9 & 10, Southview Heights

Part of Section 8, Township 47 North, Range 31 West
Lee's Summit, Jackson County, Missouri



PROPERTY DESCRIPTION
LOTS 9 & 10, SOUTHVIEW HEIGHTS.

REVISIONS	
DATE	DESCRIPTION

Part of Section 8
Township 47 North, Range 31 West
Lee's Summit, Jackson County, Missouri

REZONING EXHIBIT				
SHEET 1 OF 1	SECTION 8	TOWNSHIP 47	RANGE 31 W	COUNTY JACKSON
DRAWN BY M. Schlicht, PLS., PE		SCALE 1" = 20'		DATE OF PREPARATION January 2, 2024

PROFESSIONAL SEAL

ENGINEERING SOLUTIONS
ENGINEERING & SURVEYING
50 SE 30TH STREET
LEE'S SUMMIT, MO 64082
P: (816) 623-9888 F: (816) 623-9849