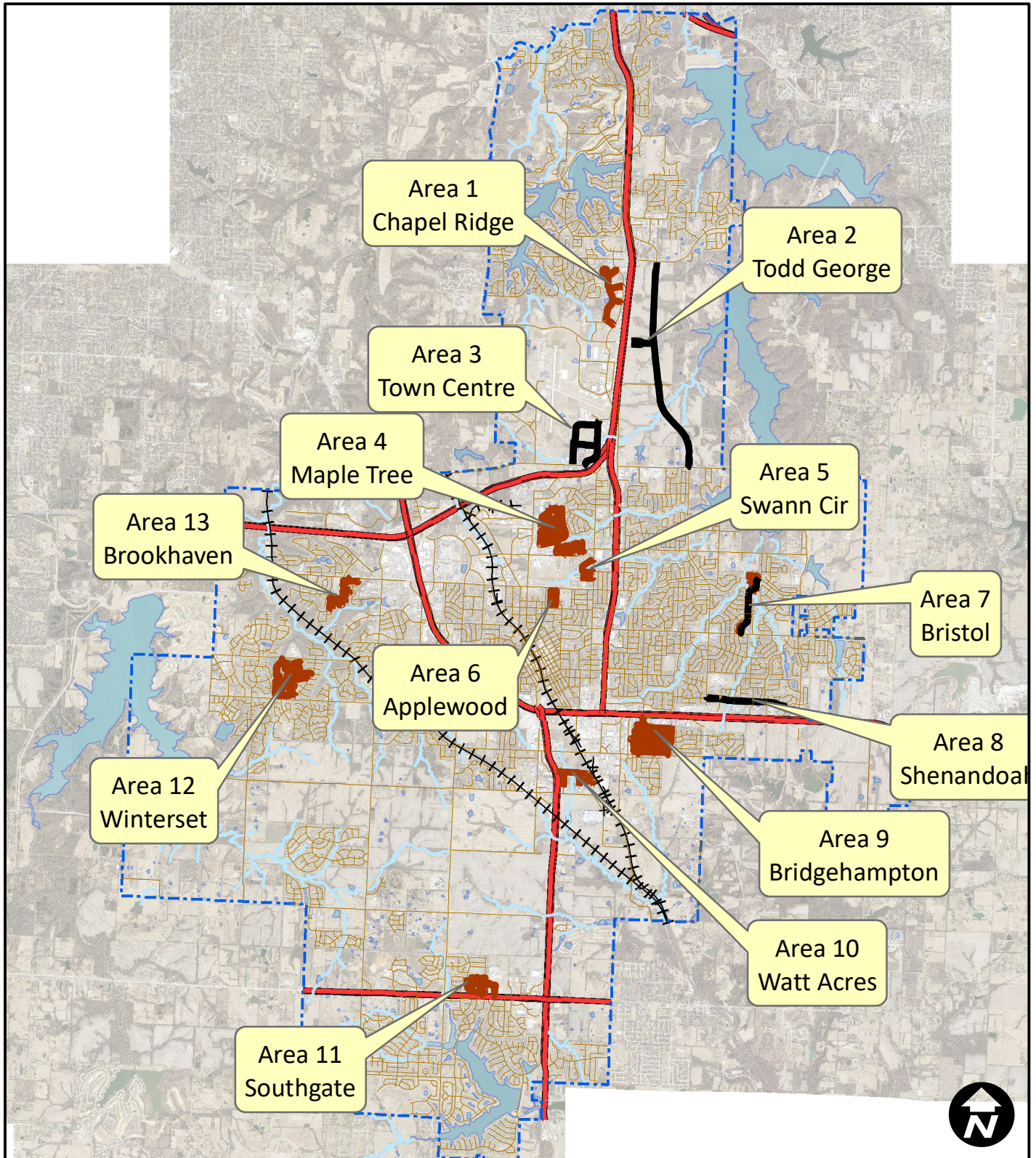


Area	Street Name	From Street	To Street	Width	Lnth	CUL_DE_SAC	Square Yards	MicroSurface Type II (area)	MicroSurface Black (area)	4" Solid White HighBuild	4" Broken White HighBuild	4" Solid Yellow HighBuild	4" Broken Yellow HighBuild	6" Solid White Thermo	6" Dash White Thermo	12" Solid Yellow Thermo	12" Solid White Thermo	24" Solid White Thermo	Left Arrow Symbol Thermo	Right Arrow Symbol Thermo	2 Head Arrow Symbol Thermo	"ONLY" Symbol Thermo	6" Thermo Removal	12" Thermo Removal	24" Thermo Reomval	Arrow Thermo Removal	"ONLY" Symbol Thermo Removal	
9	SE 10TH TER	END OF STREET	SE CAPE DR	24	1330	0	3,547	63,188																				
9	SE 11TH ST	END OF STREET	SE COUNTRY LN	32	2575	1	9,437																					
9	SE 11TH PT	END OF STREET	END OF STREET	24	190	1	857																					
9	SE 11TH TER	SE LONDON WAY	SE CAPE DR	24	1160	0	3,093																					
9	SE 12TH ST	SE CAPE DR	SE COUNTRY LN	24	965	0	2,573																					
9	SE LONDON WAY	SE 11TH TER	SE 12TH TER	24	500	0	1,333																					
9	SE 12TH TER	SE LONDON WAY	SE COUNTRY LN	24	2195	0	5,853																					
9	SE 12TH CIR	END OF STREET	SE 12TH TER	24	185	1	844																					
9	SE 12TH CT	END OF STREET	SE 12TH TER	24	180	1	831																					
63,188																												
10	SE 16TH ST	190' E OF SE M 291 HWY	SE WILLOW RD	22	1855	0	4,534	15,164																				
10	SE DECKER ST	SE 16TH ST	400 FT NORTH OF SE THOMPSON DR	36	995	0	3,980																					
10	SE SUMMIT ST	SE 16TH ST	END OF STREET	24	785	1	2,444			1,500																		
10	SE 16TH TER	SE SUMMIT ST	SE WILLOW RD	22	785	0	1,919																					
10	SE WILLOW RD	SE 16TH ST	END OF STREET	22	785	1	2,287			1,560																		
15,164																												
11	SW WINDSONG DR	SW 35TH ST	SW M 150 HWY	32	1245	0	4,427	23,099																				
11	SW WINDSONG PL	END OF STREET	SW WINDSONG DR	24	165	1	791																					
11	SW HARBOR CIR	SW WINDSONG DR	SW M 150 HWY	24	1600	0	4,267			200									15		2							
11	SW WINDBROOK DR	END OF STREET	SW HARBOR CIR	24	345	1	1,271																					
11	SW PHILIP ST	SW HARBOR CIR	END OF STREET	24	725	1	2,284																					
11	SW PHILIP CT	SW PHILIP ST	END OF STREET	24	165	1	791																					
11	SW 35TH TER	END OF STREET	SW WINDEMERE DR	24	1255	1	3,697																					
11	SW WINDEMERE DR	END OF STREET	SW M 150 HWY	32	735	1	2,895			40		120								1								
11	SW 36TH ST	END OF STREET	SW HARBOR CIR	24	190	1	857																					
11	SW 36TH TER	SW HARBOR CIR	END OF STREET	24	300	1	1,151																					
11	SW 36TH TER	END OF STREET	SW HARBOR CIR	24	120	1	671																					
23,099																												
12	SW WINTERVALLEY DR	SW 3RD ST	SW WINTERCREEK DR	24	1910	0	5,093		38,714		225																	
12	SW WINTERVALLEY CIR	SW WINTERVALLEY DR	END OF STREET	24	370	1	1,337																					
12	SW WINTERVALLEY CT	END OF STREET	SW WINTERVALLEY DR	24	560	1	1,844																					
12	SW WINTERBROOK CIR	SW WINTERVALLEY DR	END OF STREET	24	230	1	964																					
12	SW WINTERBROOK CT	END OF STREET	SW WINTERVALLEY DR	24	350	1	1,284																					
12	SW WINTERVIEW CIR	SW WINTERVALLEY DR	END OF STREET	24	545	1	1,804																					
12	SW WINTERVIEW RDG	SW WINTERPARK BLVD	SW WINTERVALLEY DR	24	1085	0	2,893																					
12	SW WINTERCREEK DR	SW WINTERGARDEN DR	SW WINTERPARK BLVD	24	1930	0	5,147																					
12	SW WINTERSTAR DR	SW WINTERCREEK DR	SW WINTERGARDEN DR	24	935	0	2,493																					
12	SW WINTERSTAR CT	END OF STREET	SW WINTERSTAR DR	24	320	1	1,204																					
12	SW WINTERGARDEN DR	SW WINTERVALLEY DR	SW WINTERPARK BLVD	24	3790	0	10,107																					
12	SW WINTERGARDEN CT	SW WINTERGARDEN DR	SW WINTERGARDEN DR	24	345	0	920																					
12	SW WINTERGARDEN CIR	SW WINTERGARDEN DR	END OF STREET	40	85	1	590																					
12	SW WINTERWALK LN	END OF STREET	SW WINTERGARDEN DR	24	640	1	2,057																					
12	SW WINTERHILL LN	END OF STREET	SW WINTERGARDEN DR	24	235	1	977																					
38,714																												
13	NW BROOKRIDGE DR	NW BROOKHAVEN DR	NW CHIPMAN RD	24	210	0	560	17,568																				
13	NW BROOKHAVEN DR	END OF STREET	END OF STREET	24	1715	1	4,924																					
13	NW BROOKHAVEN CIR	NW BROOKHAVEN DR	END OF STREET	44	85	1	593																					
13	NW AMBERSHAM DR	END OF STREET	END OF STREET	24	1035	1	3,111																					
13	NW ASHURST DR	NW AMBERSHAM DR	NW TIMBERBROOKE DR	24	1125	0	3,000																					
13	NW TENNYSON PL	END OF STREET	NW ASHURST DR	24	460	1	1,577																					
13	NW ESSEX DR	END OF STREET	NW ASHURST DR	24	440	1	1,524																					
13	NW WHITLOCK DR	NW RIVEN ROCK TRL	NW ASHURST DR	24	855	0	2,280																					
17,568																												
Est. Total S.Y. Qty.																												
								243,874	141,016	40,155	1,320	65,795	910	1,540	170	1,731	170	748	109	27	7	4	1,710	1,901	748	153	4	
									4" Solid White HighBuild	4" Broken White HighBuild	4" Solid Yellow HighBuild	4" Broken Yellow HighBuild	6" Solid White Thermo	6" Dash White Thermo	12" Solid Yellow Thermo	12" Solid White Thermo	24" Solid White Thermo	Left Arrow Symbol Thermo	Right Arrow Symbol Thermo	2 Head Arrow Symbol Thermo	"ONLY" Symbol Thermo	6" Thermo Removal	12" Thermo Removal	24" Thermo Reomval	Arrow Thermo Removal	"ONLY" Symbol Thermo Removal		

City of Lee's Summit Surface Seal 21/22 - Prj. No. 324 21/22 (slurry)



Area
Overview

Legend

- MicroSurface
- MicroSurface - Black

City of Lee's Summit
Surface Seal 21/22 - Prj. No. 324 21/22 (slurry)

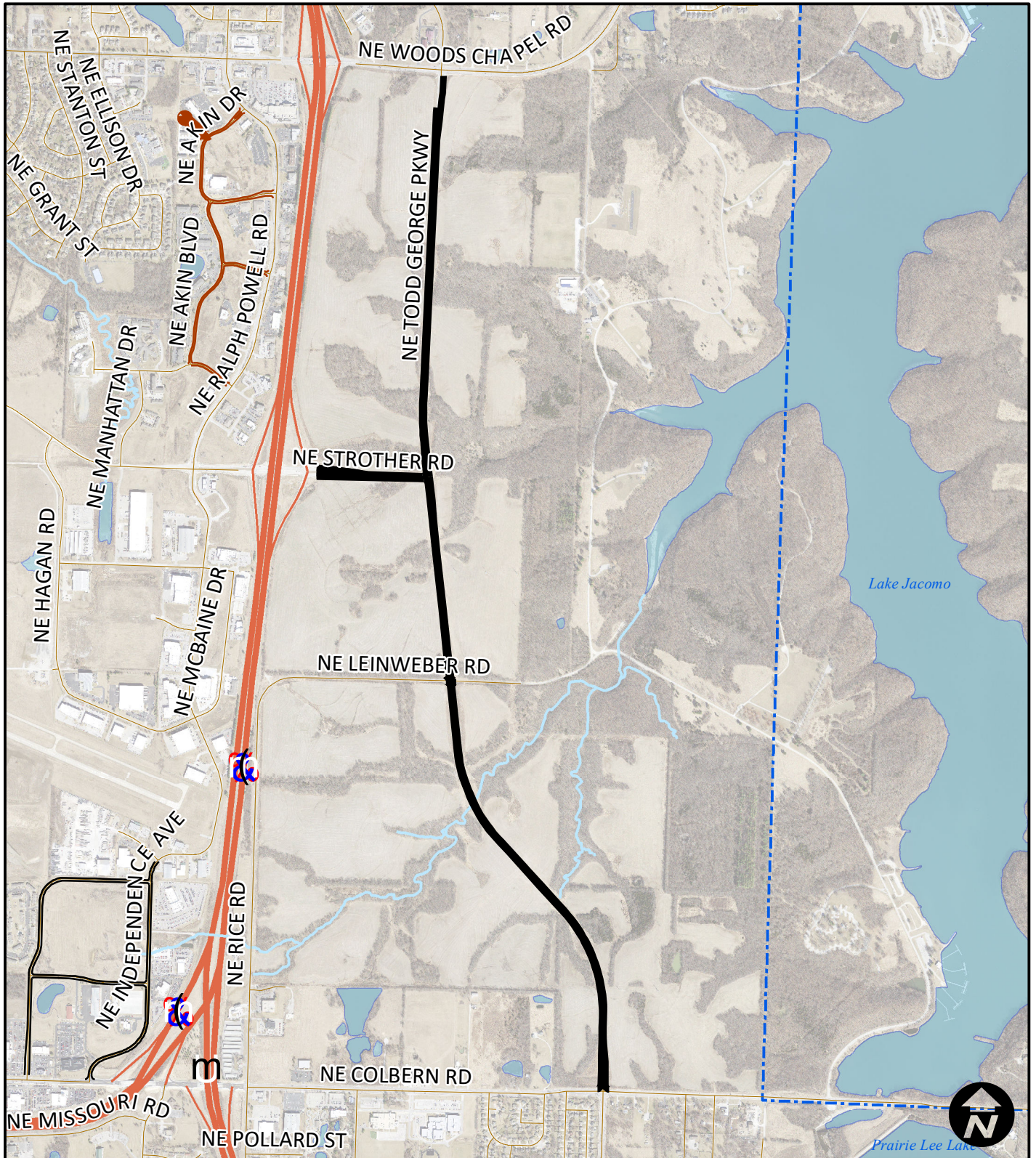


Area 1
Chapel Ridge

Legend

- MicroSurface
- MicroSurface - Black

City of Lee's Summit Surface Seal 21/22 - Prj. No. 324 21/22 (slurry)

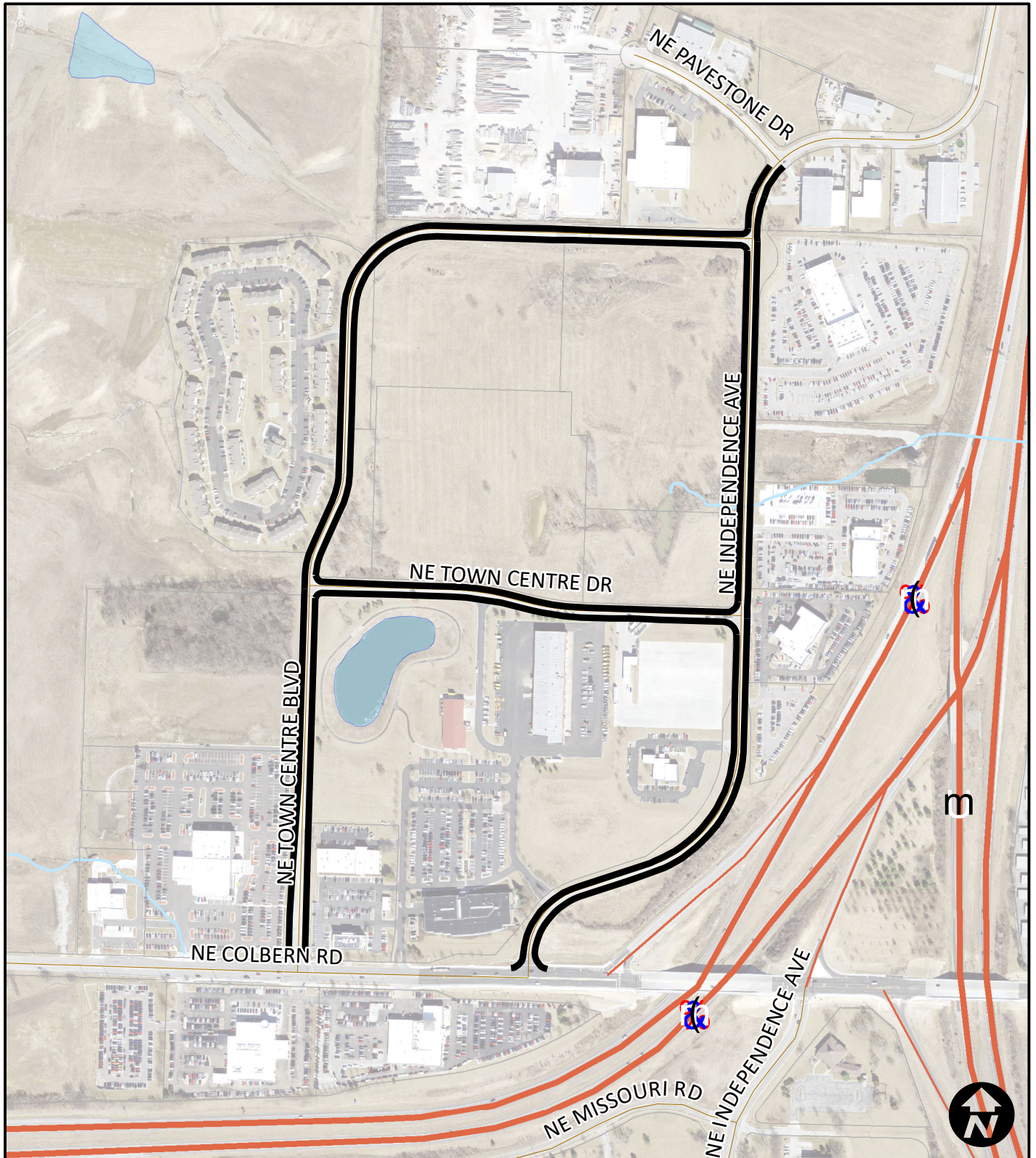


Area 2
Todd George

Legend

- MicroSurface
- MicroSurface - Black

City of Lee's Summit
Surface Seal 21/22 - Prj. No. 324 21/22 (slurry)

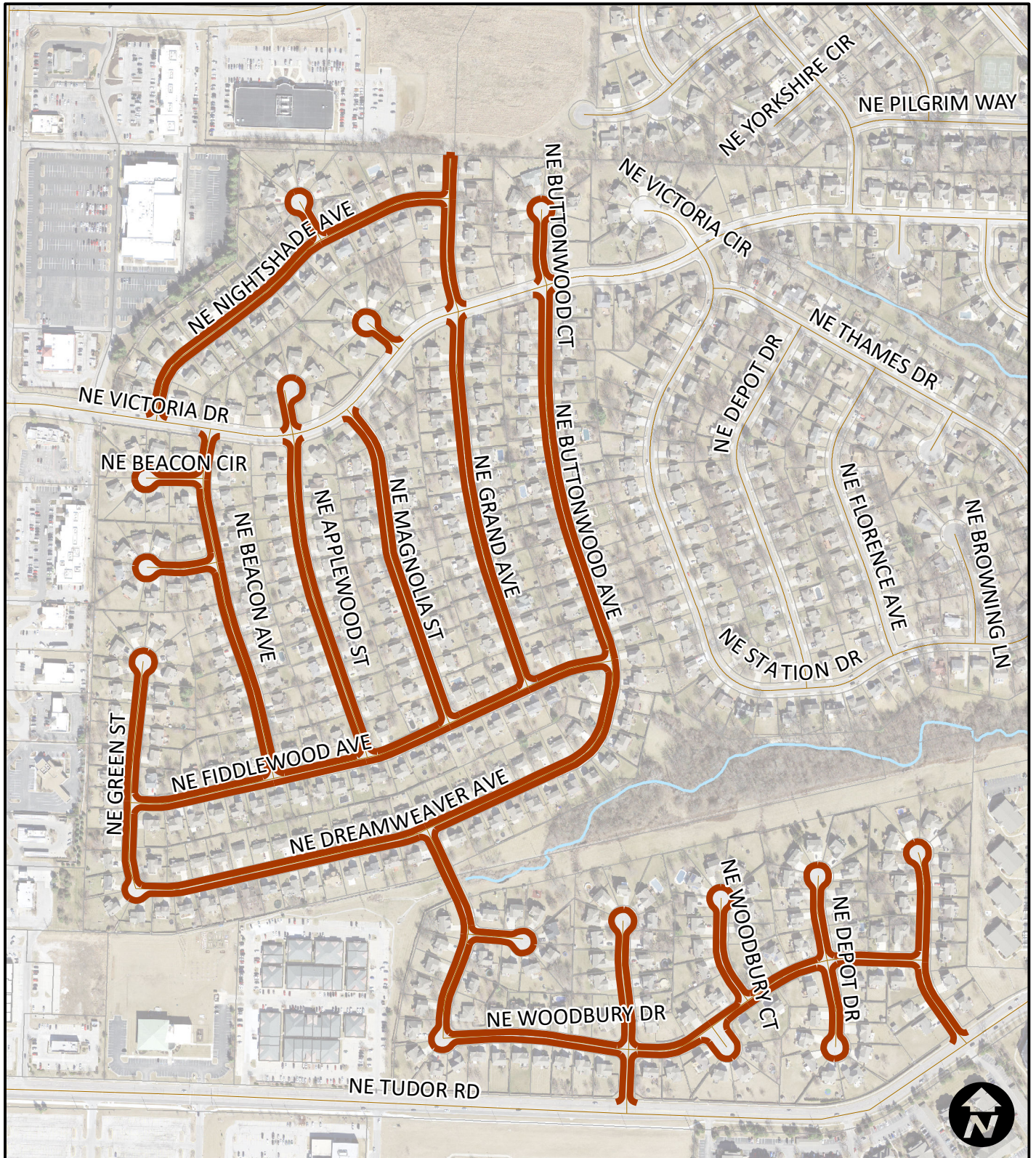


Area 3
Town Centre

Legend

- MicroSurface
- MicroSurface - Black

City of Lee's Summit Surface Seal 21/22 - Prj. No. 324 21/22 (slurry)



Area 4
Maple Tree

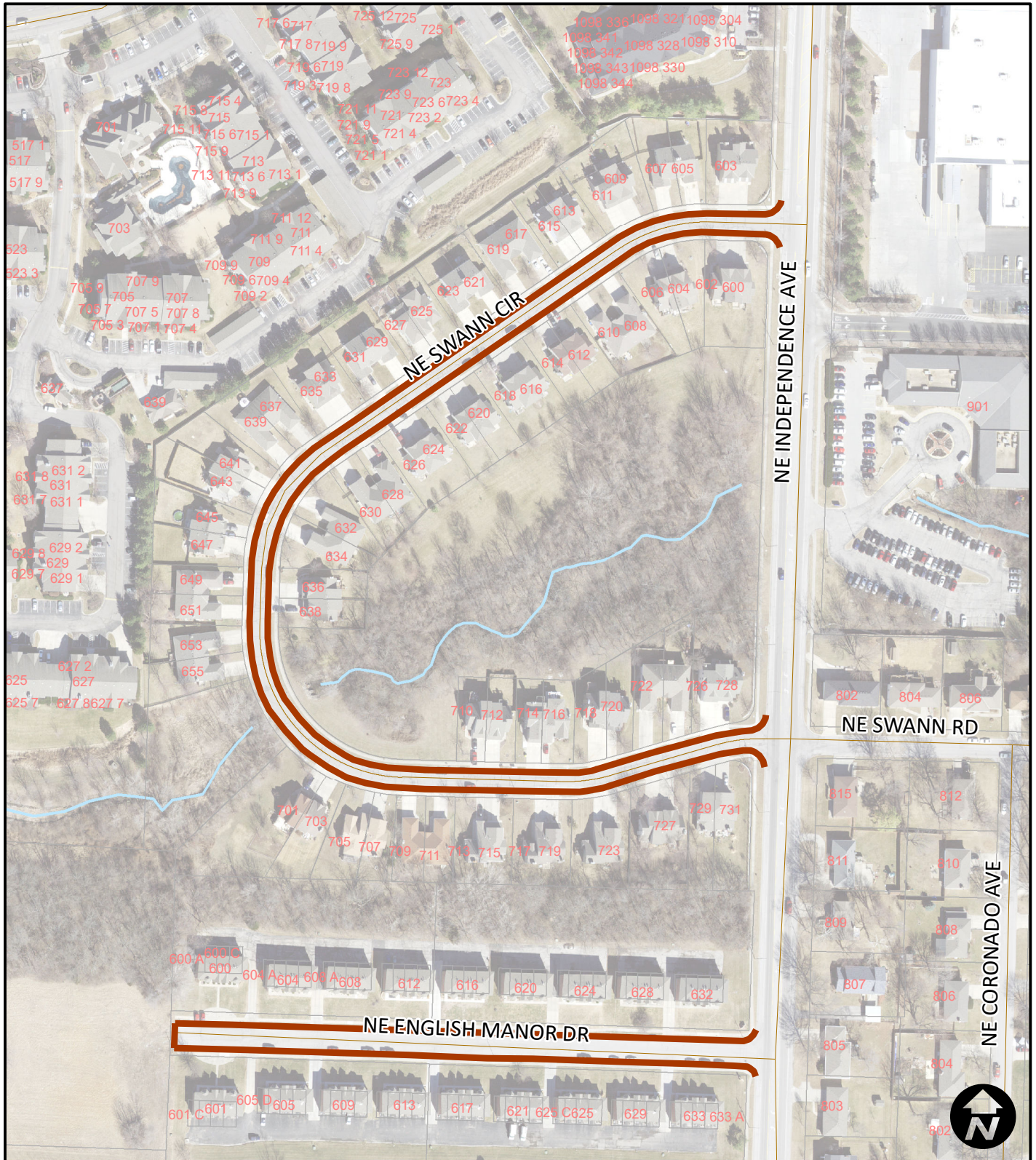
Legend

— MicroSurface

— MicroSurface - Black

City of Lee's Summit

Surface Seal 21/22 - Prj. No. 324 21/22 (slurry)

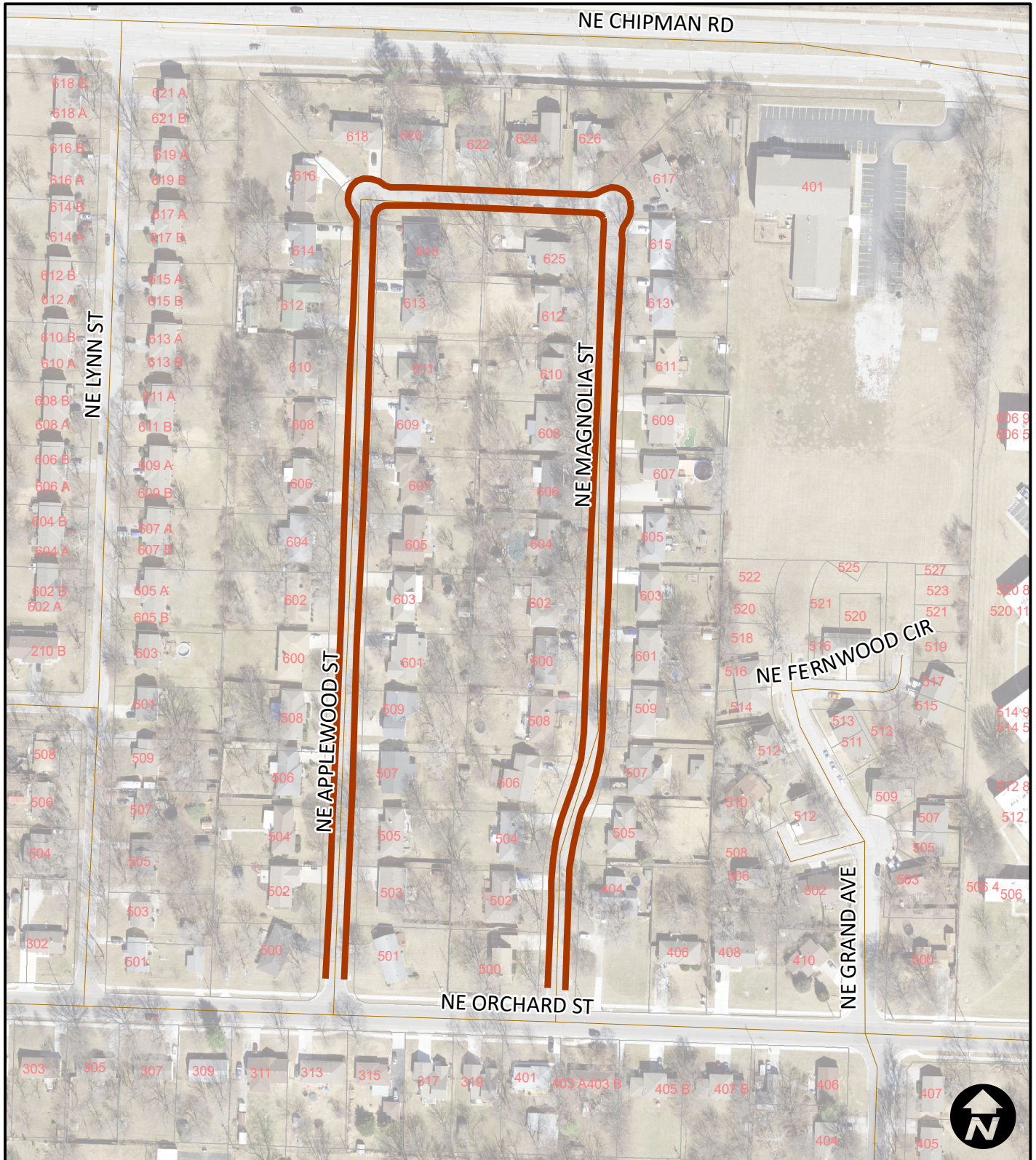


Area 5
Swann Cir

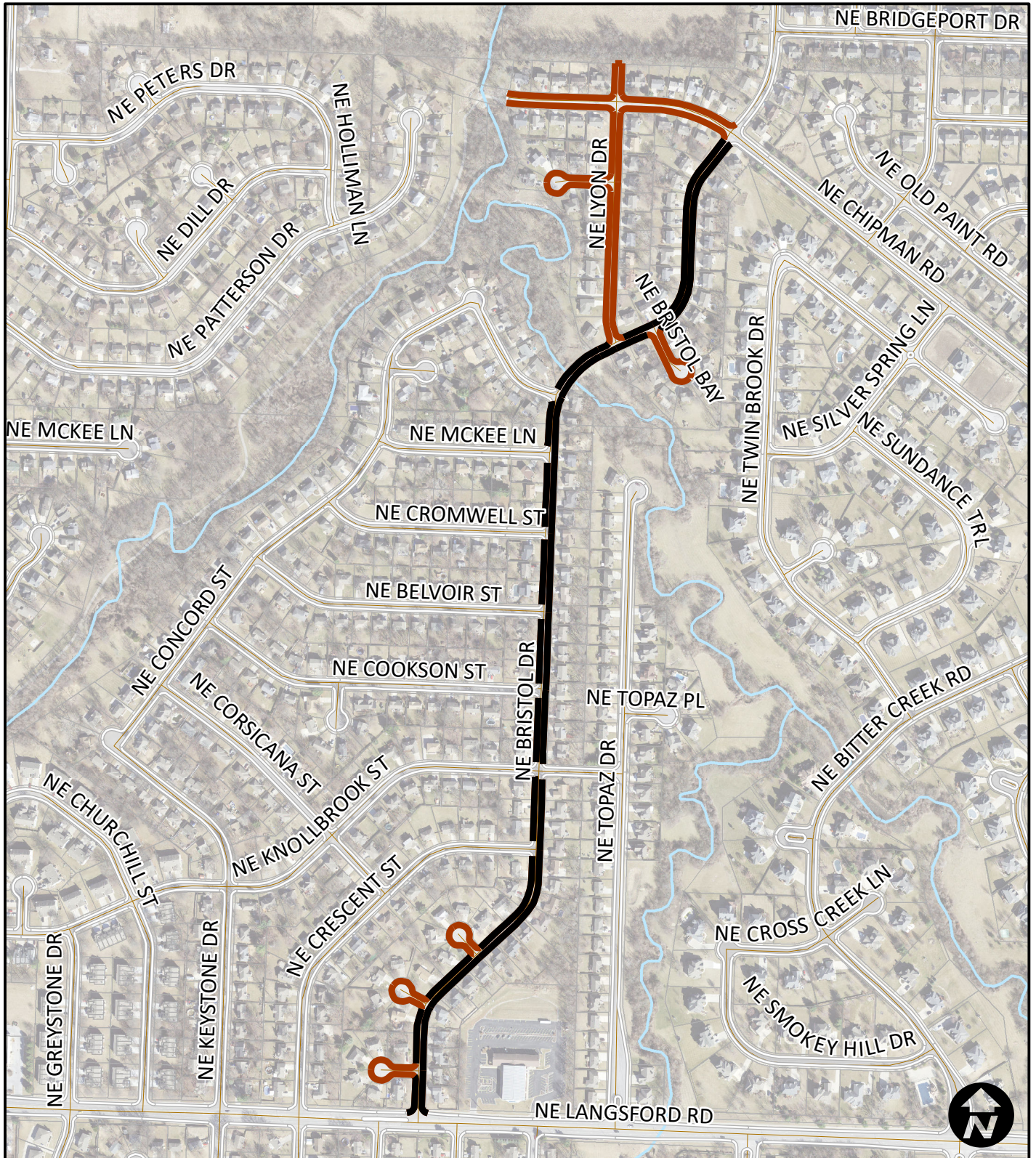
Legend

- MicroSurface
- MicroSurface - Black

City of Lee's Summit Surface Seal 21/22 - Prj. No. 324 21/22 (slurry)



City of Lee's Summit Surface Seal 21/22 - Prj. No. 324 21/22 (slurry)



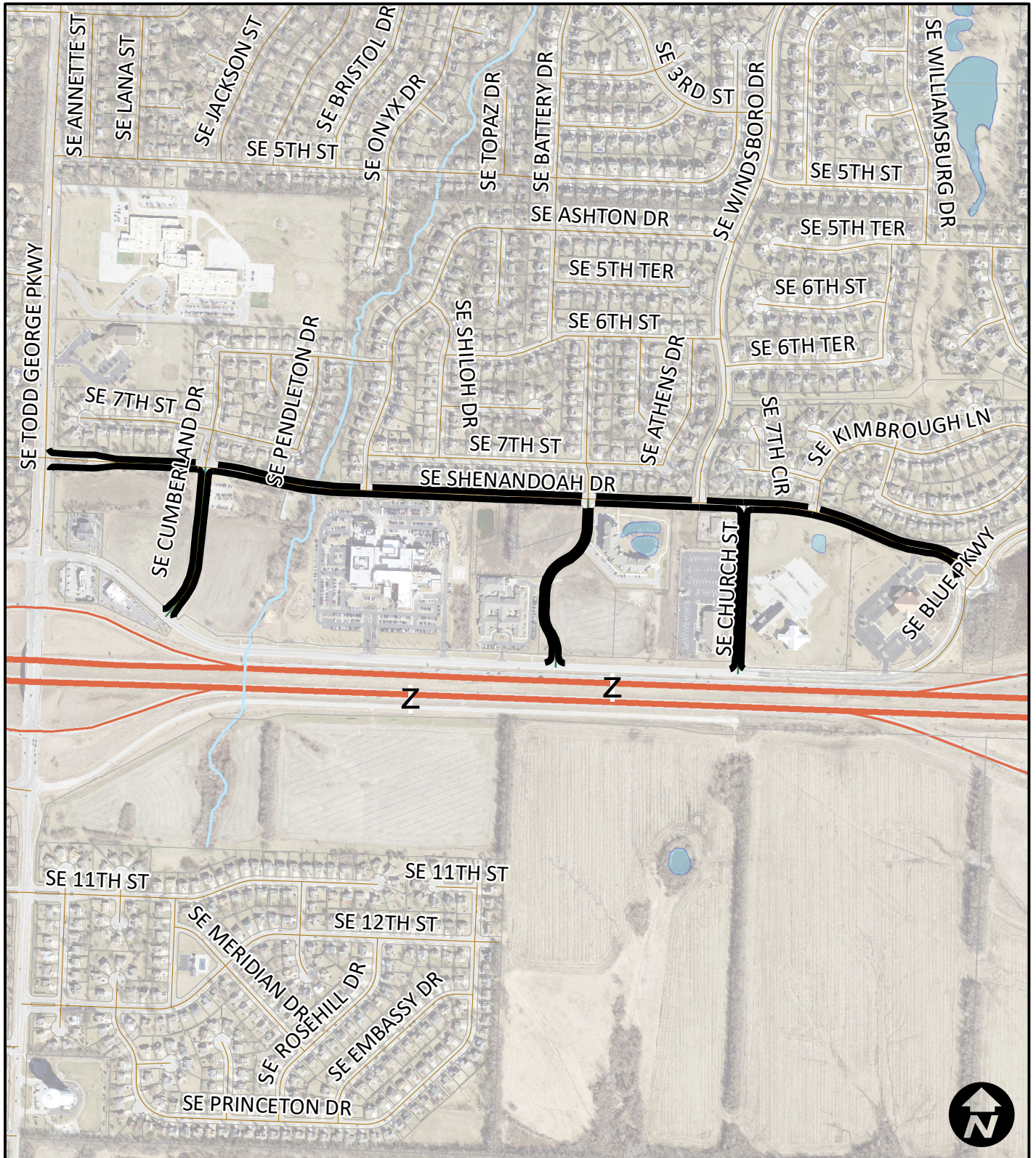
Area 7
Bristol

Legend

— MicroSurface

— MicroSurface - Black

City of Lee's Summit
Surface Seal 21/22 - Prj. No. 324 21/22 (slurry)

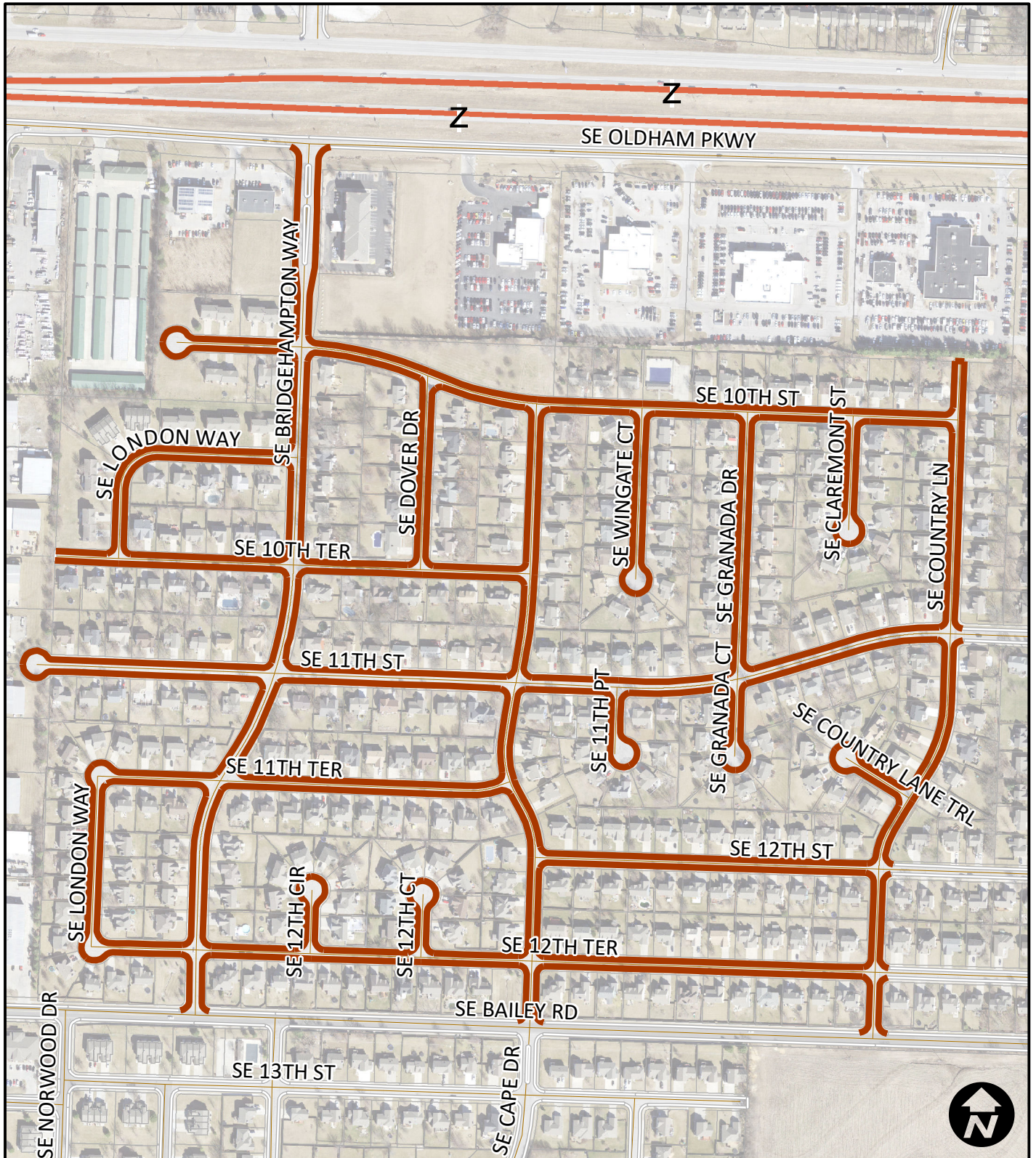


Area 8
Shenandoah

Legend

- MicroSurface
- MicroSurface - Black

City of Lee's Summit Surface Seal 21/22 - Prj. No. 324 21/22 (slurry)

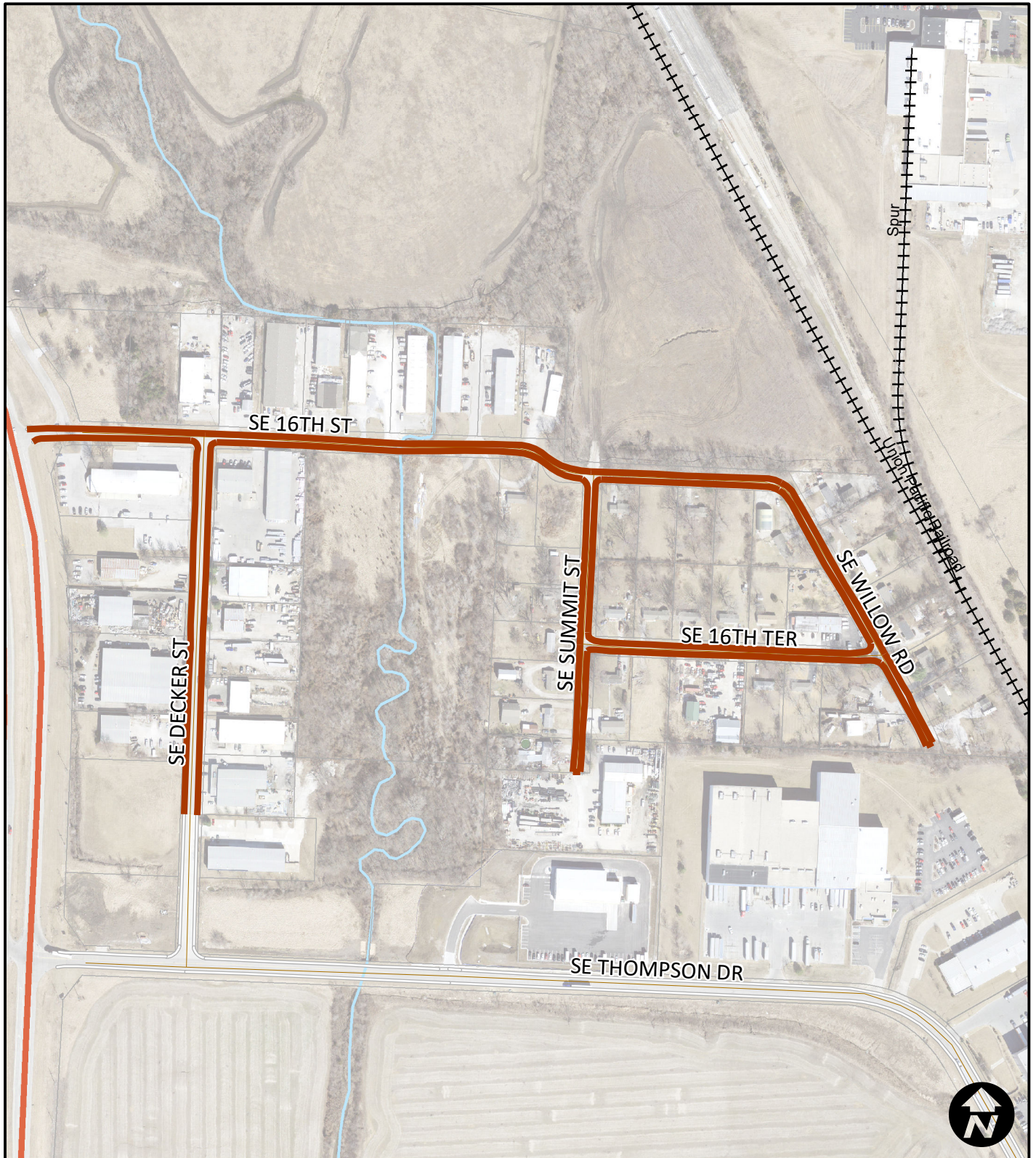


Area 9
Bridgehampton

Legend

- MicroSurface
- MicroSurface - Black

City of Lee's Summit Surface Seal 21/22 - Prj. No. 324 21/22 (slurry)

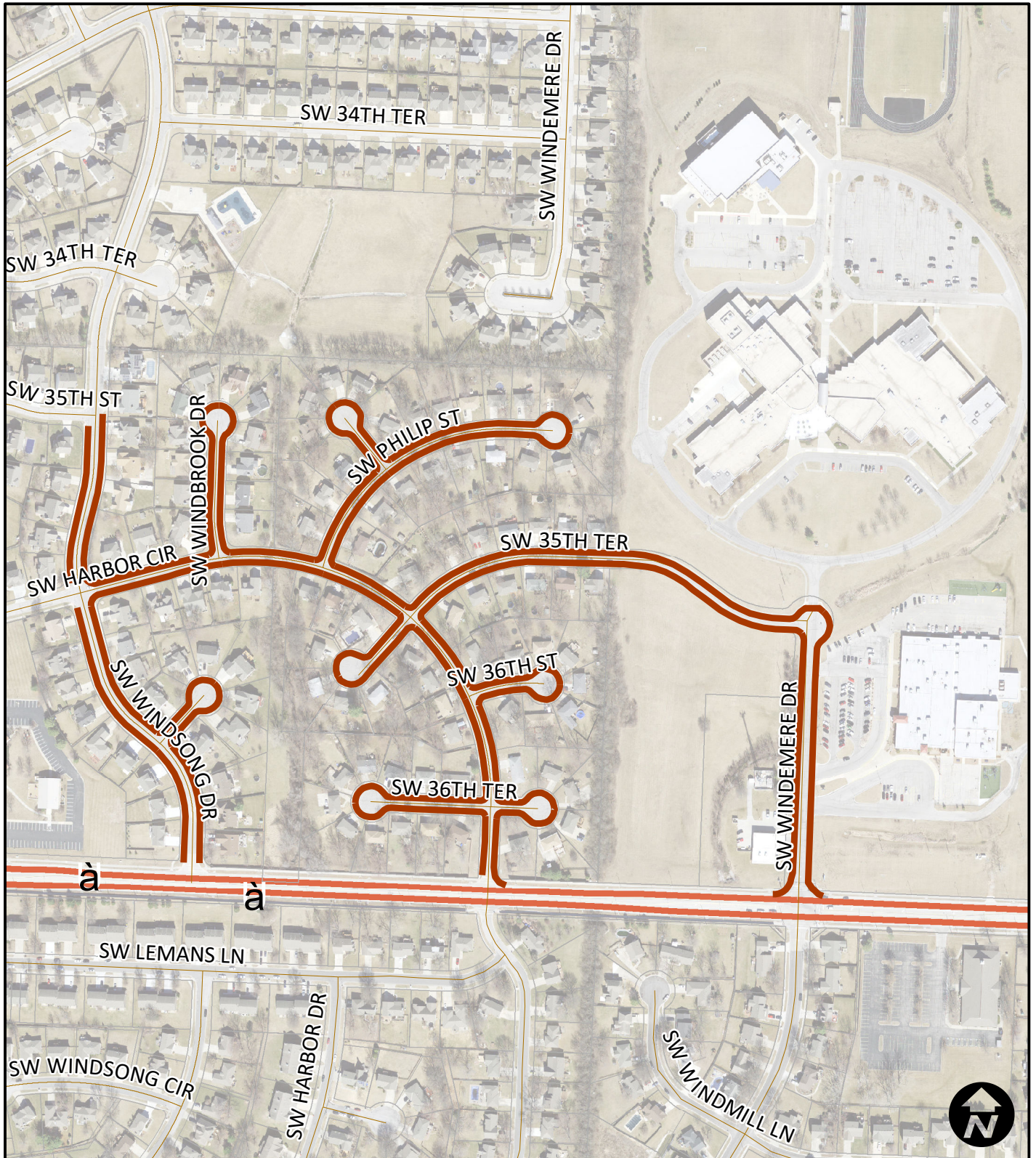


Area 10
Watt Acres

Legend

- MicroSurface
- MicroSurface - Black

City of Lee's Summit
Surface Seal 21/22 - Prj. No. 324 21/22 (slurry)



Area 11
Southgate

Legend

- MicroSurface
- MicroSurface - Black

City of Lee's Summit
Surface Seal 21/22 - Prj. No. 324 21/22 (slurry)

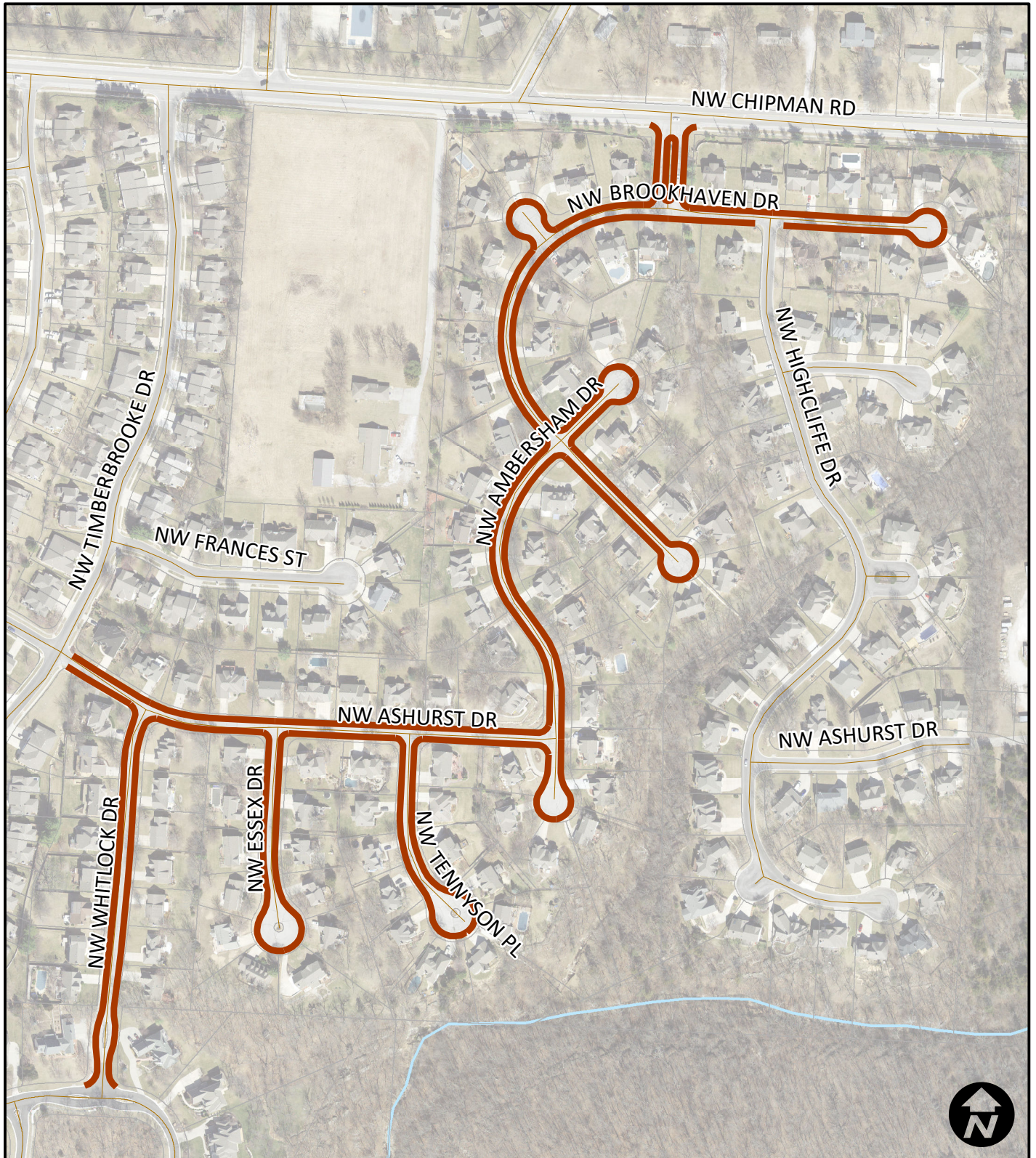


Area 12
Winterset

Legend

- MicroSurface
- MicroSurface - Black

City of Lee's Summit
Surface Seal 21/22 - Prj. No. 324 21/22 (slurry)



Area 13
Brookhaven

Legend

- MicroSurface
- MicroSurface - Black