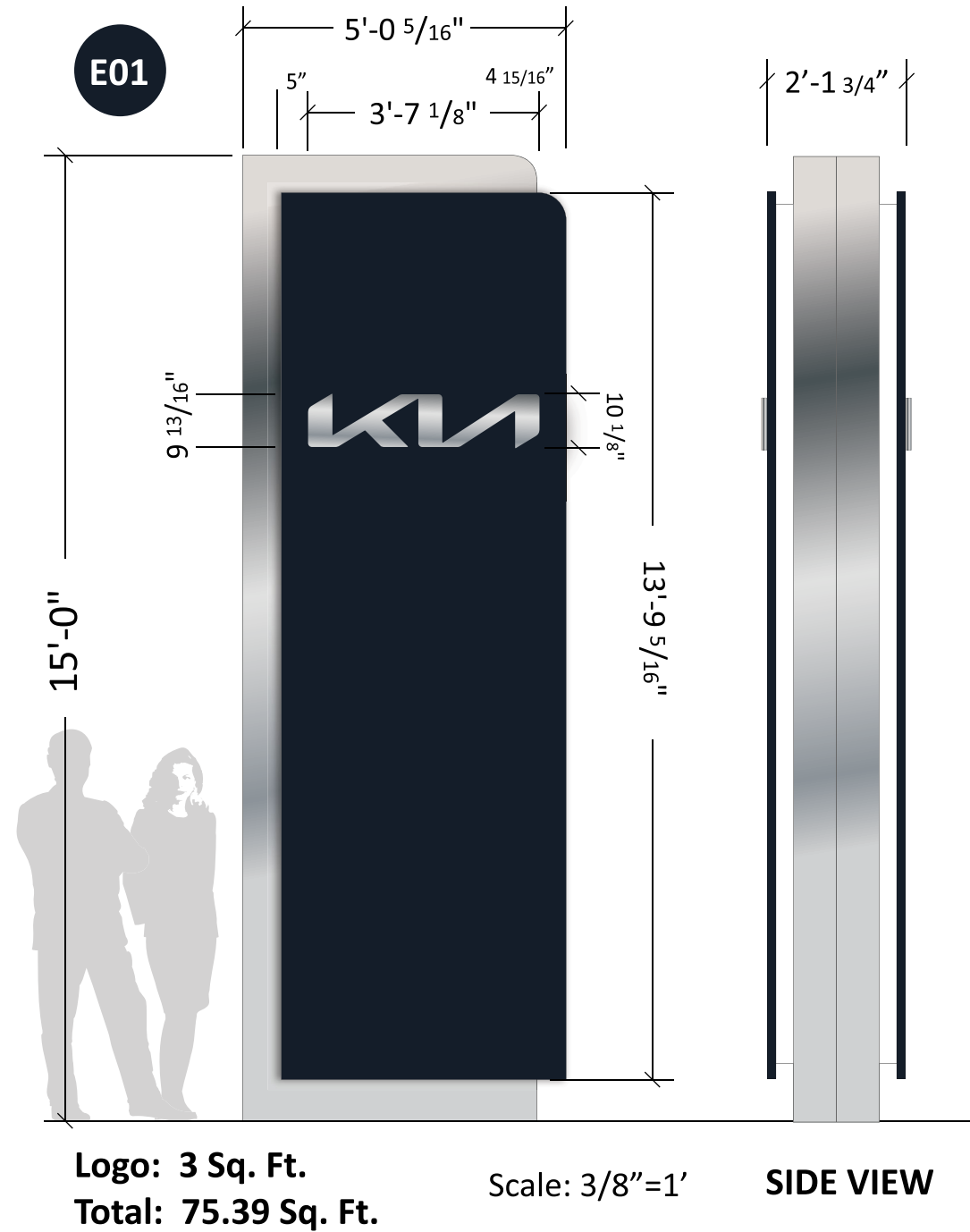


SMALL PYLONS / MONUMENTS

KUSPS15

Black edge always toward street >



KPSN15 Existing sign to be removed

Colors

- Black KIA ACM – Kia Midnight Black
- Metallic Silver KIA ACM – Alfrex Exotic Mica
- Accent Lighting Lens – 7328 White
- LED – 7100K White Illumination

Specifications

- Cladding – 4MM KIA Black and Metallic Silver ACM
- Accent Lighting – 7100K LED illumination with 7328 White Polycarbonate Lens
- KIA Wordmark – Milled Aluminum and Plastic
- “Sandwich” Design with 7100K LED illumination thru edge of filler
- Black edge always toward street >

NOTE: PSG to remove & scrap existing pylon.
Will attempt to reuse existing foundation.
Dealer to provide electrical prior to installation.

Project ID

JH2-44473

Date: 06-06-2022
Scale: Noted
Sales: E. Mackle
Designer: C.Miramontes

Rev. #:

Date:

Revision Note:

Missing Information

Required:

Electrical

- 120V 347V
- Other _____

Customer Approval

Signature _____

MM/DD/YYYY _____

It is the Customer's responsibility to ensure that the structure of the building is designed and constructed to accept the installation of the signs being ordered. Please ask PSG to provide further details if required.

All rights reserved. The artwork depicted herein are copyright and are the exclusive property of Pattison Sign Group and as such cannot be reproduced in whole or in part without written permission by Pattison Sign Group.

MO029
Cable Dahmer Kia
400 NE Colbern Rd
Lee's Summit, MO 64064

Sign Item

E01

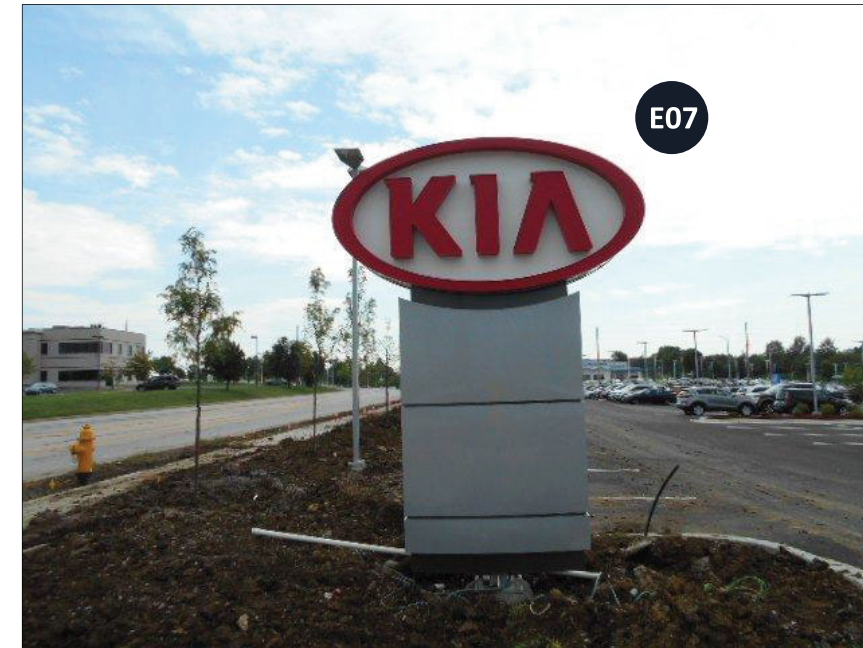
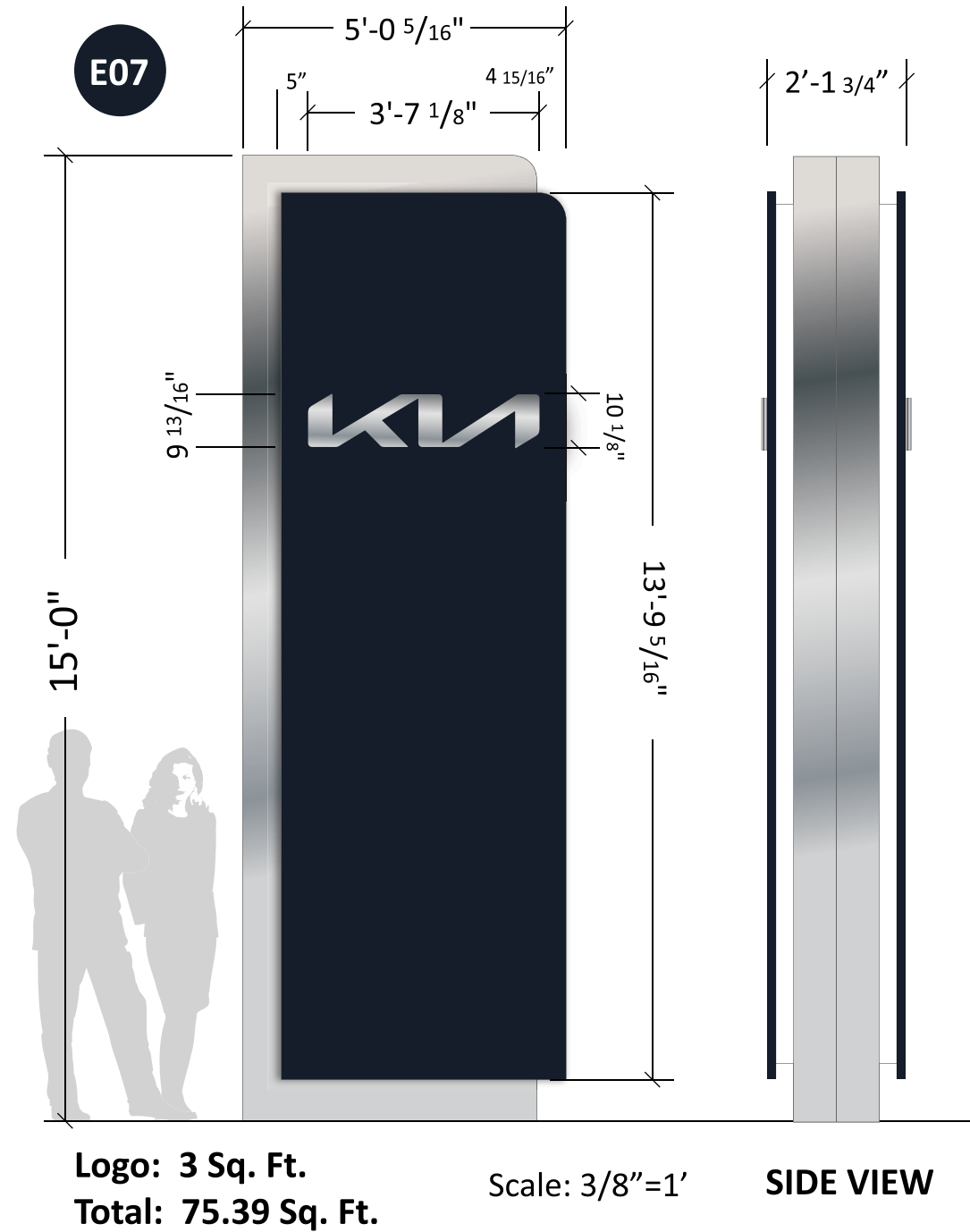
Note: Size of signage in relation to the surrounding area is approximate. This photo mock-up is intended for location purposes only. A site survey is required.

Any non-compliant Kia logo (i.e., window vinyl, doors/entry vinyl, parking signs, directional signs, multi-tenant signs, reader board graphics, etc.) not represented in this proposal must be updated by the Dealer to the current compliant Kia logo or must be removed.

SMALL PYLONS / MONUMENTS

KUSPS15

Black edge always toward street >



KPSN15 Existing sign to be removed

Colors

- Black KIA ACM – Kia Midnight Black
- Metallic Silver KIA ACM – Alfrex Exotic Mica
- Accent Lighting Lens – 7328 White
- LED – 7100K White Illumination

Specifications

- Cladding – 4MM KIA Black and Metallic Silver ACM
- Accent Lighting – 7100K LED illumination with 7328 White Polycarbonate Lens
- KIA Wordmark – Milled Aluminum and Plastic
- “Sandwich” Design with 7100K LED illumination thru edge of filler
- Black edge always toward street >

NOTE: PSG to remove & scrap existing pylon. Will attempt to reuse existing foundation. Dealer to provide electrical prior to installation.

Project ID

JH2-44473

Date: 06-06-2022
Scale: Noted
Sales: E. Mackle
Designer: C.Miramontes

Rev. #:
Date:

Revision Note:

Missing Information

Required:

Electrical

- 120V 347V
- Other _____

Customer Approval

Signature _____

MM/DD/YYYY _____

It is the Customer's responsibility to ensure that the structure of the building is designed and constructed to accept the installation of the signs being ordered. Please ask PSG to provide further details if required.

All rights reserved. The artwork depicted herein are copyright and are the exclusive property of Pattison Sign Group and as such cannot be reproduced in whole or in part without written permission by Pattison Sign Group.

Note: Size of signage in relation to the surrounding area is approximate. This photo mock-up is intended for location purposes only. A site survey is required.

Any non-compliant Kia logo (i.e., window vinyl, doors/entry vinyl, parking signs, directional signs, multi-tenant signs, reader board graphics, etc.) not represented in this proposal must be updated by the Dealer to the current compliant Kia logo or must be removed.