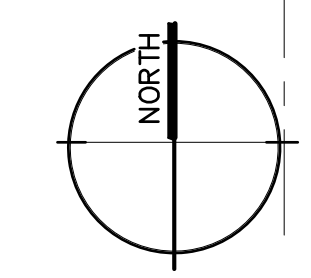
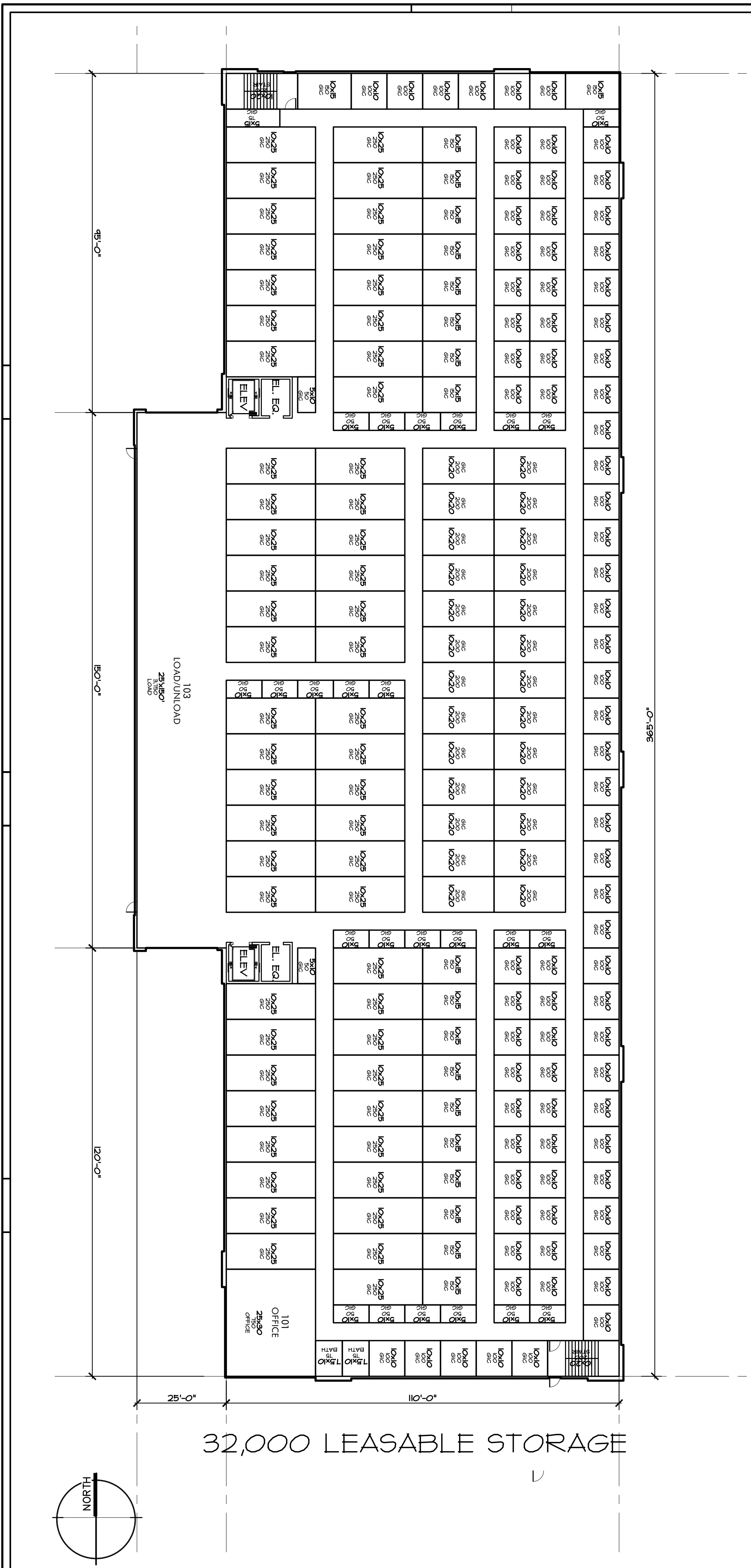
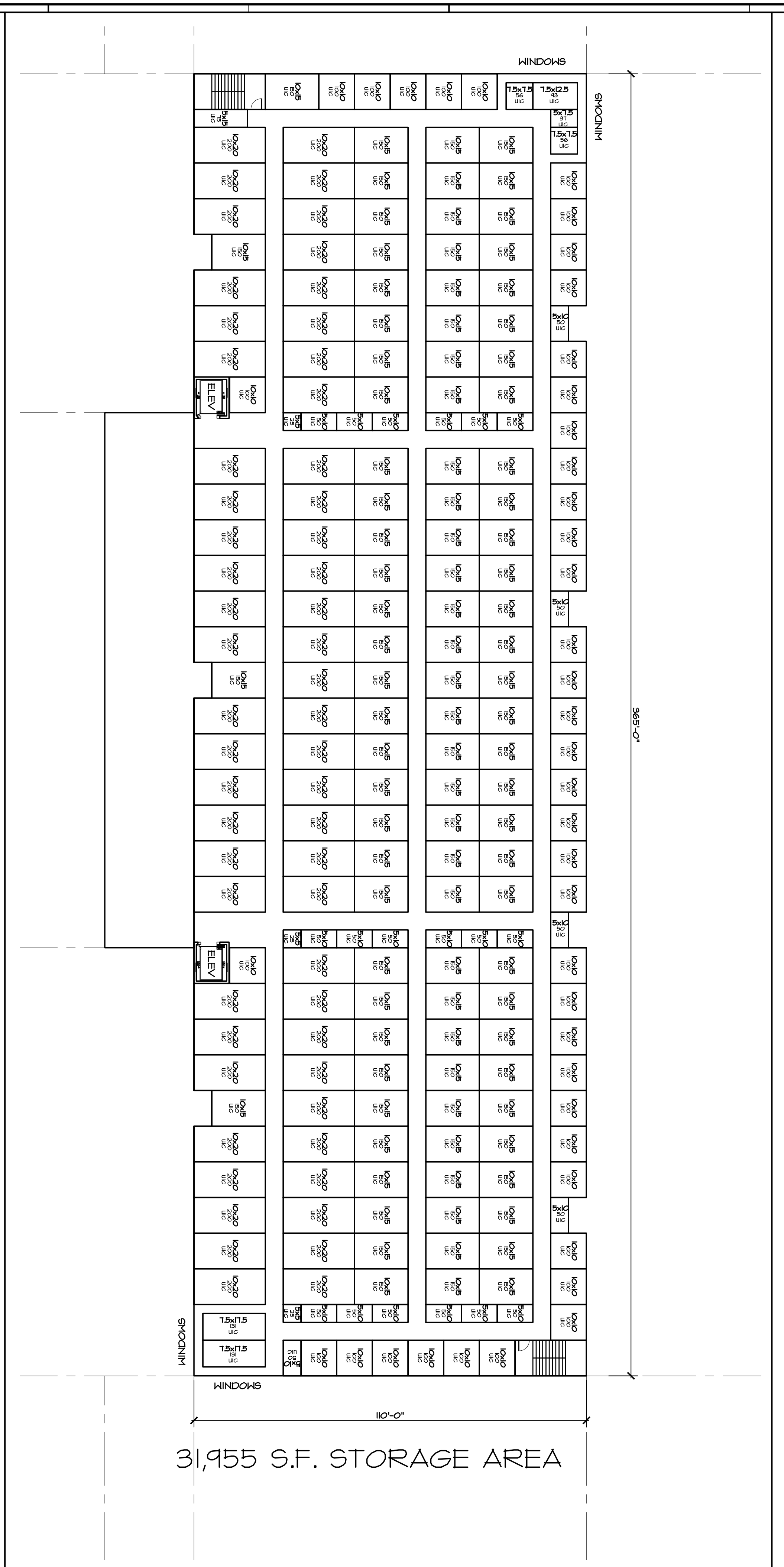


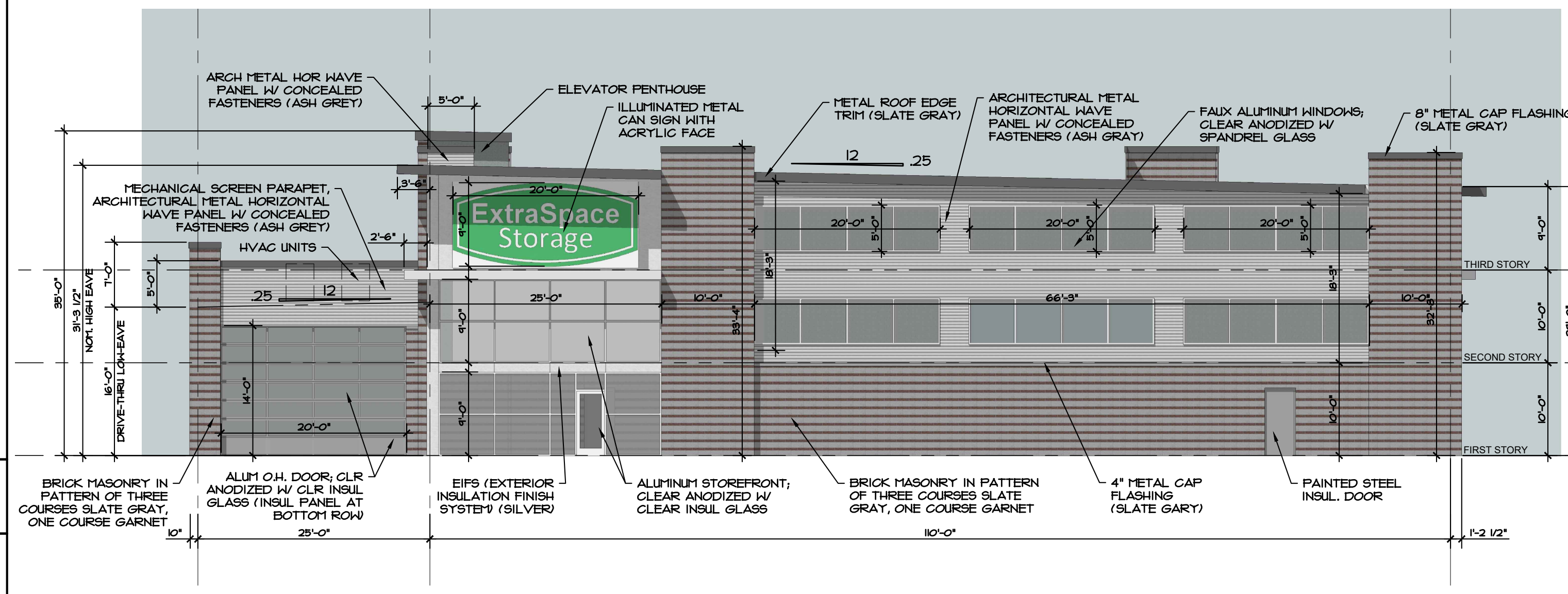
BUILDING AREA DATA					
	1st Story	2nd Story	3rd Story	TOTAL	PERCENT
TOTAL	43,900	39,800	39,800	123,500	
STORAGE	32,000	31,955	32,000	95,955	77.70%
COMMON	11,900	7,845	7,800	27,545	22.30%
					100.00%



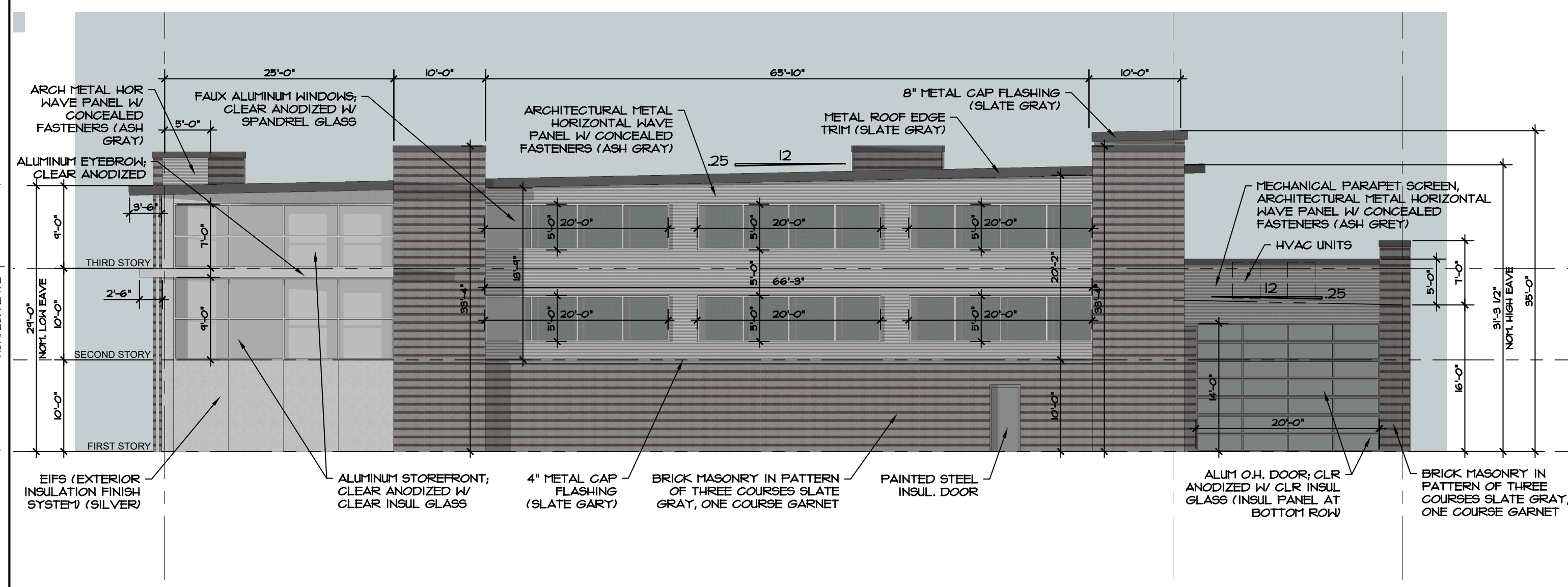
**1** FIRST STORY LAYOUT PLAN - 43,900 S.F.  
1" = 20'-0"

**2** SECOND STORY LAYOUT PLAN - 39,800 S.F.  
1" = 20'-0"

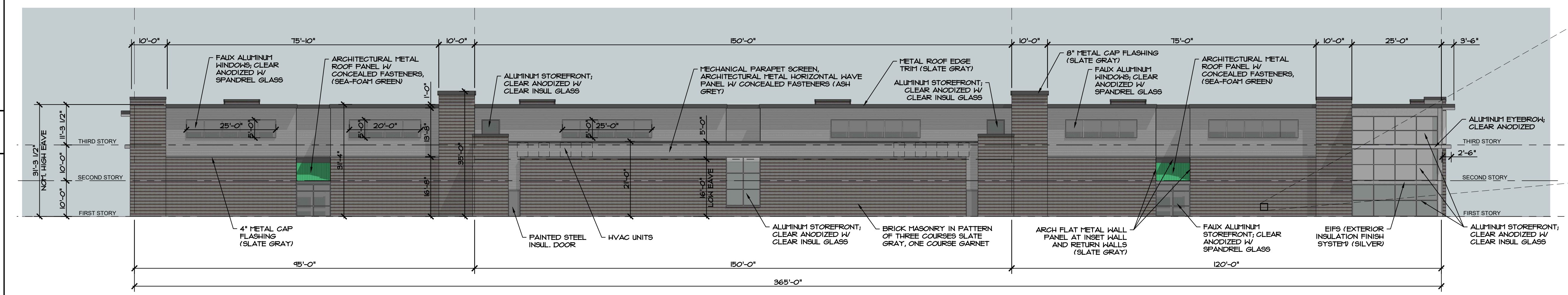
**3** THIRD STORY LAYOUT PLAN - 39,800 S.F.  
1" = 20'-0"



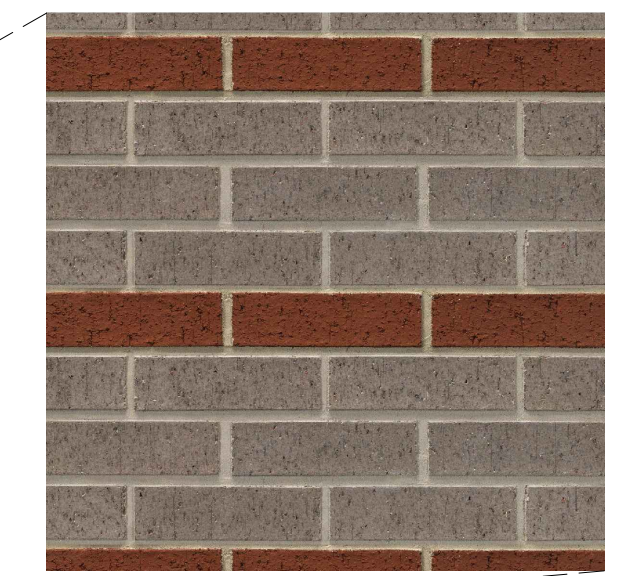
**1 SOUTH ELEVATION**  
3/32" = 1'-0"



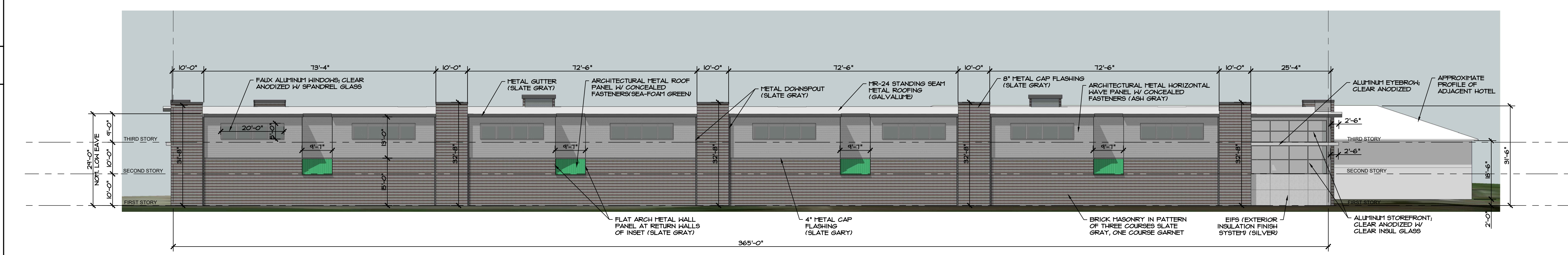
**2 NORTH ELEVATION**  
3/32" = 1'-0"



**3 WEST ELEVATION**  
1/16" = 1'-0"



**5 BRICK PATTERN**  
NTS



**4 EAST ELEVATION**  
1/16" = 1'-0"

**EXTRASPACE STORAGE**  
650 OLDHAM PARKWAY  
LEE'S SUMMIT, MISSOURI

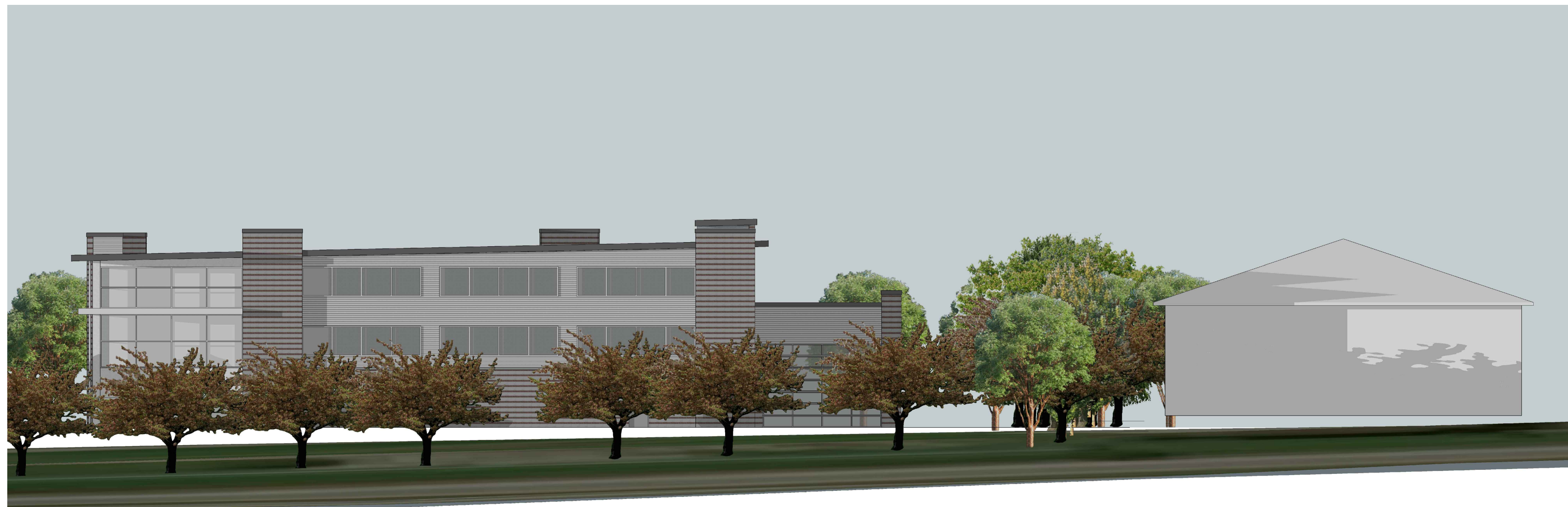


**Hernly ASSOCIATES**  
1100 Rhode Island Street  
Lawrence, Kansas  
66044  
785 - 749 - 5806  
FAX 785 - 749 - 1515

ELEVATIONS  
Date: 2018/10/12  
Drawn by: SCH  
Checked by:  
Revisions:



**1** SOUTH ELEVATION WITH PROPOSED TREES AND EXISTING ADJACENT HOTEL PROFILE  
3/32" = 1'-0"

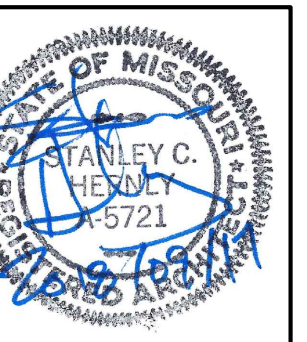


**2** WEST ELEVATION WITH PROPOSED TREES AND EXISTING ADJACENT HOTEL PROFILE  
1/16" = 1'-0"



**3** EAST ELEVATION WITH PROPOSED TREES AND EXISTING ADJACENT HOTEL PROFILE  
1/16" = 1'-0"

EXTRASPACE STORAGE  
650 OLDHAM PARKWAY  
LEE'S SUMMIT, MISSOURI



Hernly  
ASSOCIATES

1100 Rhode Island Street  
Lawrence, Kansas  
66044  
785 - 749 - 5806  
FAX 785 - 749 - 1515

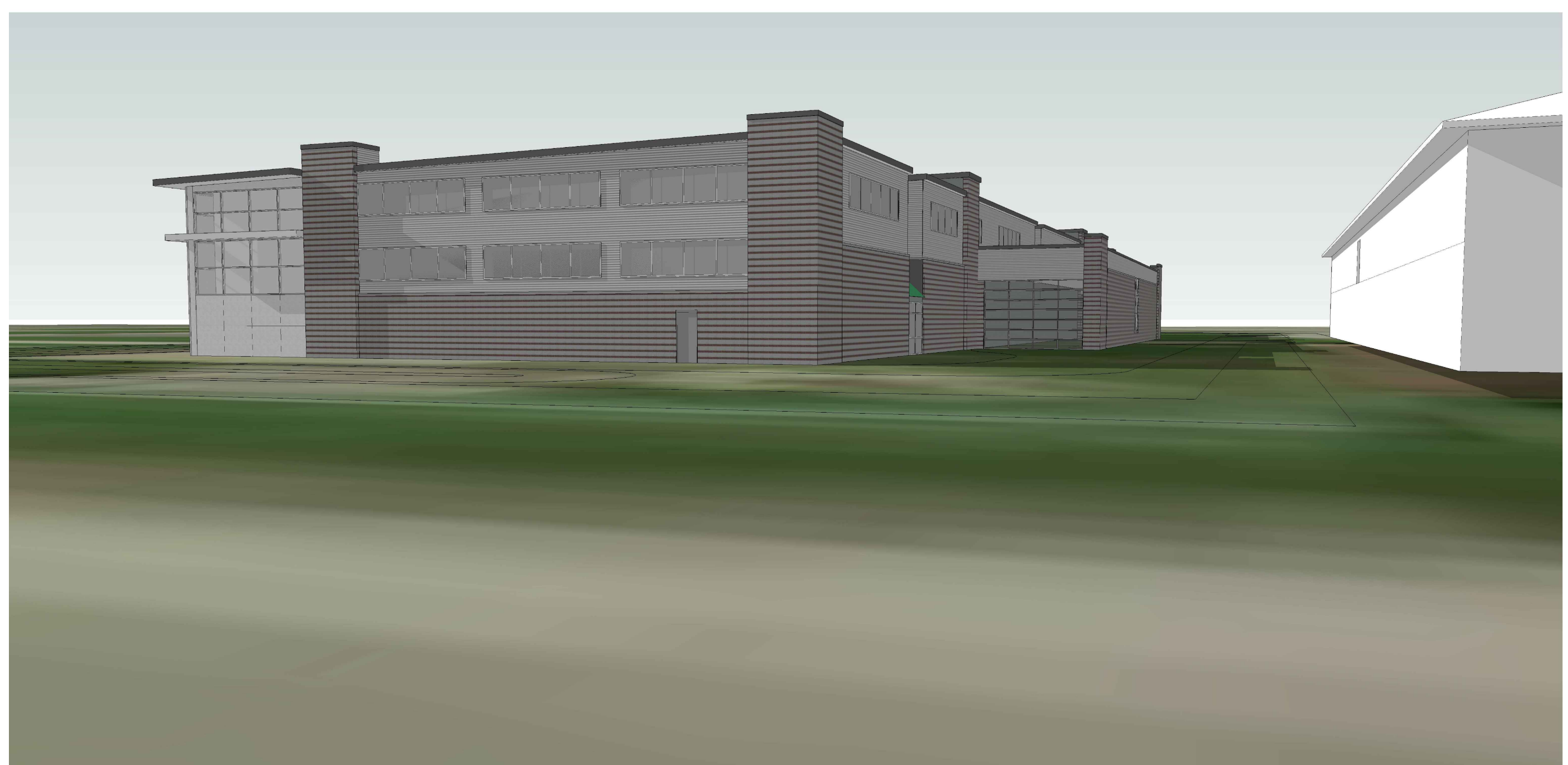
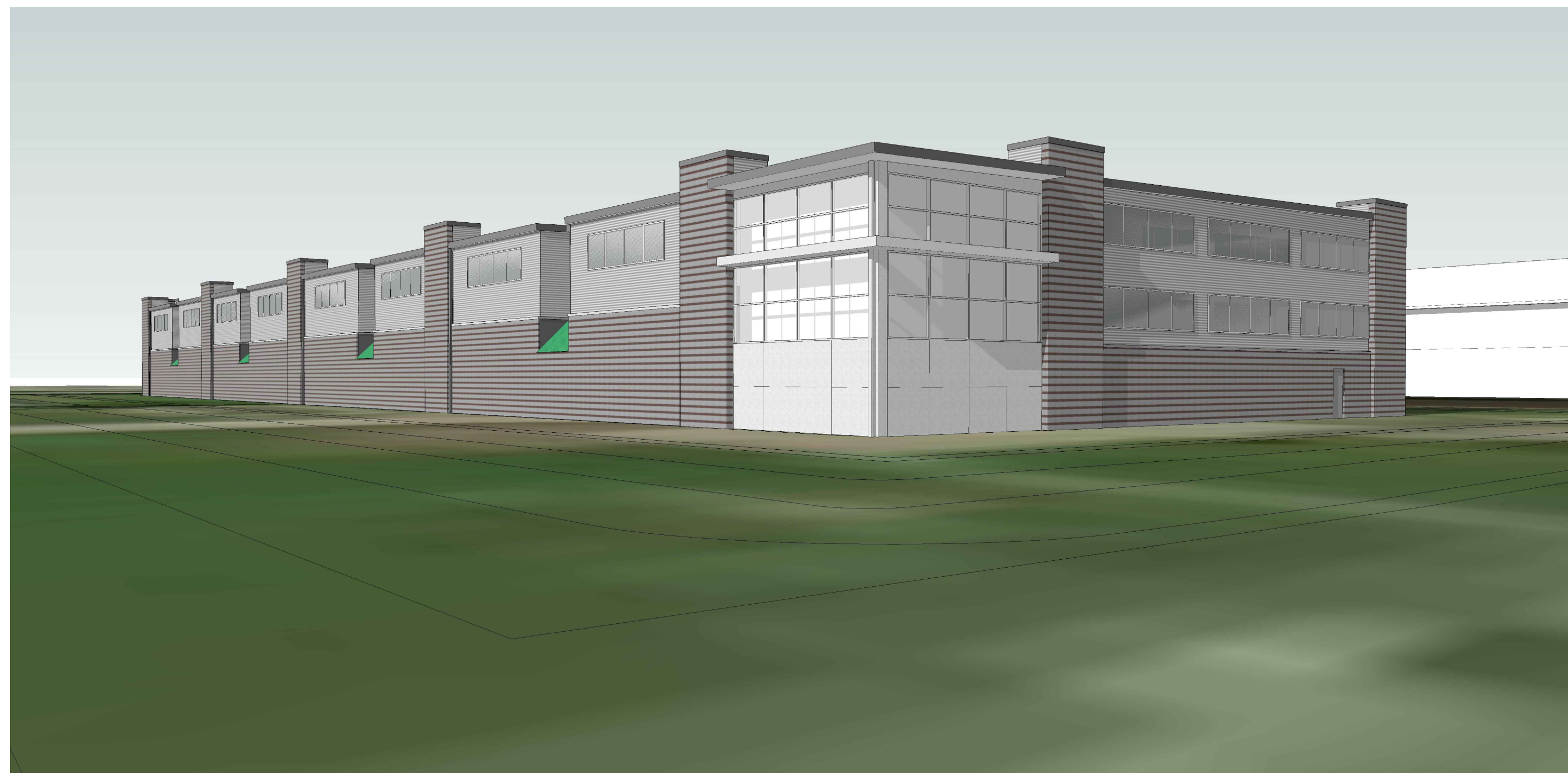
ELEVATIONS

Date: 2018/10/12  
Drawn by: SCH  
Checked by:  
Revisions:



**1** SOUTHWEST PERSPECTIVE  
NTS

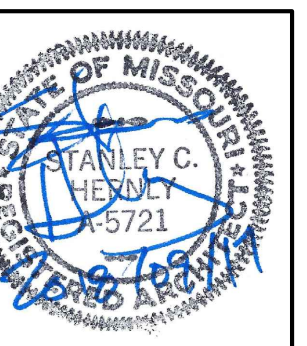
**2** SOUTHEAST PERSPECTIVE  
NTS



**3** NORTHEAST PERSPECTIVE  
NTS

**4** NORTHWEST PERSPECTIVE  
NTS

**EXTRASPACE STORAGE**  
650 OLDHAM PARKWAY  
LEE'S SUMMIT, MISSOURI

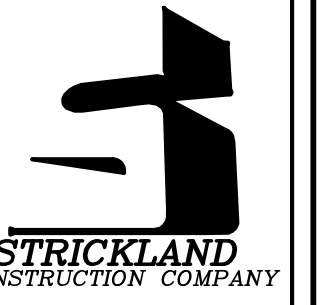


**Hernly ASSOCIATES**

1100 Rhode Island Street  
Lawrence, Kansas 66044  
785 - 749 - 5806  
FAX 785 - 749 - 1515

ELEVATIONS

Date: 2018/10/12  
Drawn by: SCH  
Checked by:  
Revisions:



**1** VIEW FROM WEST  
NTS



**2** VIEW FROM NORTHEAST  
NTS



**3** VIEW FROM NORTHWEST  
NTS

**EXTRASPACE STORAGE**  
650 OLDHAM PARKWAY  
LEE'S SUMMIT, MISSOURI



**Hernly ASSOCIATES**

1100 Rhode Island Street  
Lawrence, Kansas 66044  
785 - 749 - 5806  
FAX 785 - 749 - 1515

**ELEVATIONS**

Date: 2018/10/12  
Drawn by: SCH  
Checked by:  
Revisions: