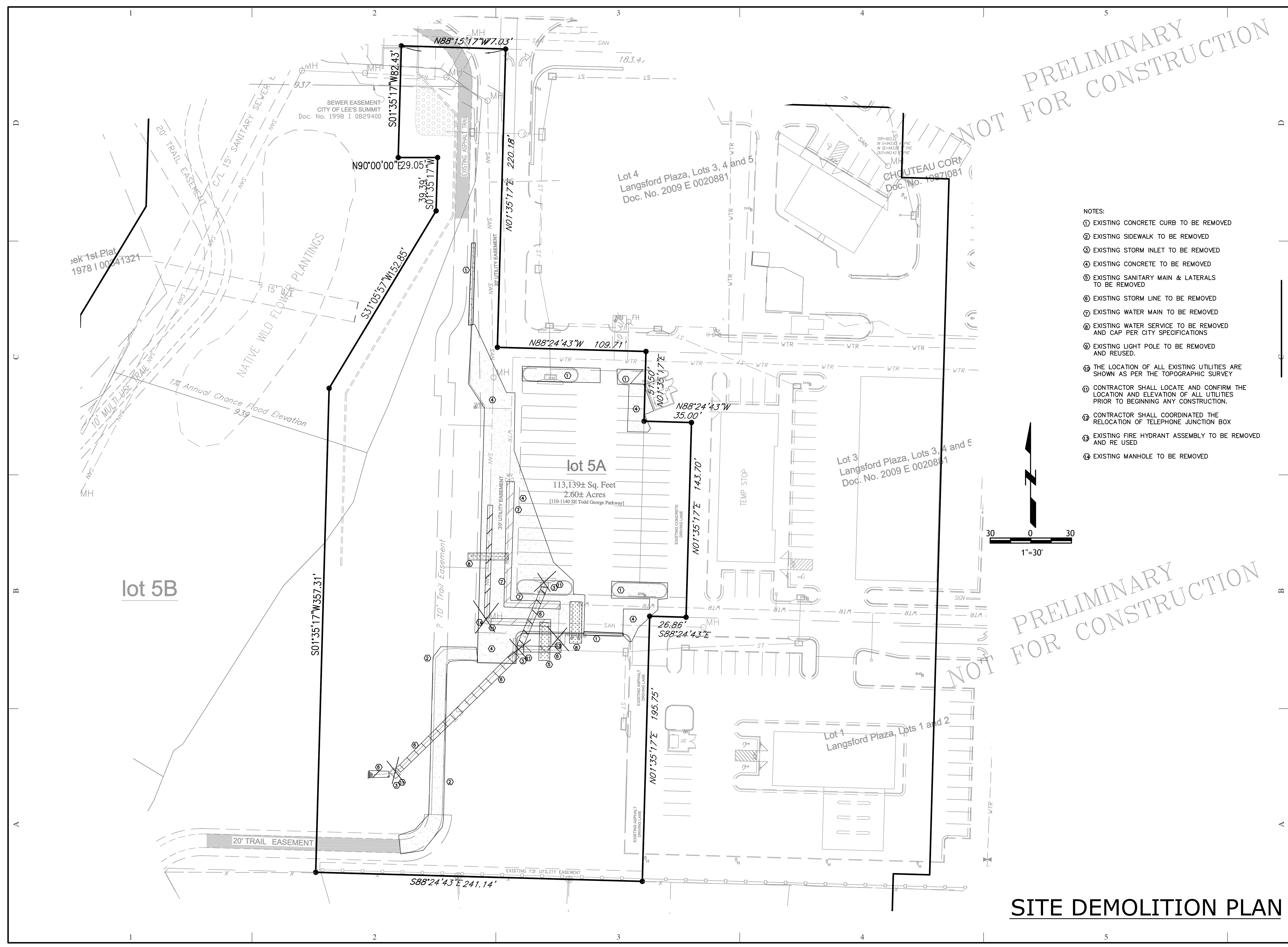
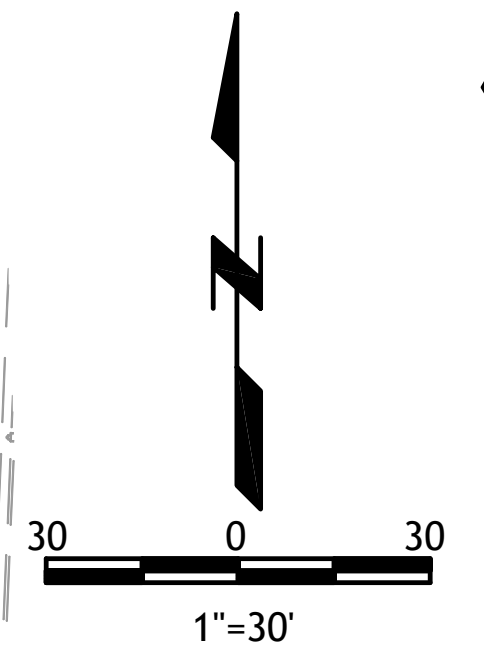


PRELIMINARY
NOT FOR CONSTRUCTION



- NOTES:
- ① EXISTING CONCRETE CURB TO BE REMOVED
 - ② EXISTING SIDEWALK TO BE REMOVED
 - ③ EXISTING STORM INLET TO BE REMOVED
 - ④ EXISTING CONCRETE TO BE REMOVED
 - ⑤ EXISTING SANITARY MAIN & LATERALS TO BE REMOVED
 - ⑥ EXISTING STORM LINE TO BE REMOVED
 - ⑦ EXISTING WATER MAIN TO BE REMOVED
 - ⑧ EXISTING WATER SERVICE TO BE REMOVED AND CAP PER CITY SPECIFICATIONS
 - ⑨ EXISTING LIGHT POLE TO BE REMOVED AND REUSED.
 - ⑩ THE LOCATION OF ALL EXISTING UTILITIES ARE SHOWN AS PER THE TOPOGRAPHIC SURVEY
 - ⑪ CONTRACTOR SHALL LOCATE AND CONFIRM THE LOCATION AND ELEVATION OF ALL UTILITIES PRIOR TO BEGINNING ANY CONSTRUCTION.
 - ⑫ CONTRACTOR SHALL COORDINATED THE RELOCATION OF TELEPHONE JUNCTION BOX
 - ⑬ EXISTING FIRE HYDRANT ASSEMBLY TO BE REMOVED AND RE USED
 - ⑭ EXISTING MANHOLE TO BE REMOVED



PRELIMINARY
NOT FOR CONSTRUCTION

SITE DEMOLITION PLAN

LEE'S SUMMIT SR APARTMENTS
LEE'S SUMMIT, JACKSON COUNTY, MISSOURI

Qquist Engineering, Inc
Civil Engineering for Residential & Commercial Site Development
821 NE Columbus St.
Lee's Summit, Missouri 64063
Phone: (816) 550-5675
email: rwaquist@quistengineering.com

COPYRIGHT © 2016
1ST ISSUE
4-22-2016

REVISIONS	
△	
△	
△	
△	

SHEET NO.

JOB NO.
E16-304