

# Bob Sight Lot 2, Bobs Sight Ford Quick Lane Lots 1 & 2, a Subdivision in the City of Lee's Summit, Jackson County, Missouri. S6, T47N, R31W



**2** Vicinity Map  
scale: 1"=500'  
0 250 500 1000

**Legal Description**

Lot 2, Bob Sight Ford, lots 1 & 2, a subdivision in the city of Lee's Summit, Jackson County, Missouri.

The above description has been prepared by Anderson Survey Company.

**Utility Notes**

- Boundary information, existing utilities and topographic features shown are based on information supplied by surveyor and others.
- The existing utility locations shown on these plans are approximate and may not include all utility lines present. The contractor shall be responsible to call MO ONE CALL and identify field location of all existing underground utilities prior to beginning excavation/construction activities.
- The contractor shall be responsible for any damage to any utilities or their structures during excavation/construction activities.
- The contractor shall coordinate all main taps and utility services, both temporary and permanent with the city and/or respective utility.
- Utilities shown on the plan with specific elevations and/or structure locations are SUE quality level "B", i.e. storm sewer, sanitary sewer, water hydrants & valves and other above-grade utilities. All other existing utility information shown is SUE quality level "D", primarily retracement of one-call records.

**Utility Contacts**

- SANITARY SEWERS - City of Lee's Summit, Phone (816) 969-7606,
- STORM SEWERS - City of Lee's Summit, Phone (816) 969-7307,
- WATER - City of Lee's Summit, Phone (816) 969-7606,
- ELECTRIC - Aquila, Phone (816) 737-7465
- GAS - Missouri Gas Energy, Phone (816) 969-2230
- TELEPHONE - Southwestern Bell Telephone, Phone (816) 275-8215
- CABLE - Time Warner Co., Phone (816) 358-5360



**Property Legend**

- ROW & Property Lines
- Easements

**Utility Legend**

- |          |                                     |
|----------|-------------------------------------|
| existing | proposed                            |
| sanm     | sanitary main                       |
| sans     | sanitary service                    |
| o        | storm sewer (solid wall)            |
| o        | storm sewer (perforated)            |
| wrm      | water main                          |
| wtrf     | water service (fire)                |
| wtrd     | water service (domestic)            |
| fhc      | fire hydrant coverage (300' radius) |
| gasm     | natural gas main                    |
| gass     | natural gas service                 |
| elpu     | overhead primary electric           |
| elpu     | underground primary electric        |
| elsu     | underground secondary electric      |
| data     | phone/cable/data feeder             |
| tels     | phone/cable/data service            |

**Symbols**

- sanitary manhole
- service cleanout
- rectangular structure
- circular structure
- fire hydrant
- water valve
- water meter
- backflow preventer
- natural gas meter
- electric pole
- service transformer (pad mount)
- primary switch gear
- street light
- pedestrian street light
- private site lighting
- cable/phone/data junction box

**Construction Legend**

- standard curb & gutter
- standard "dry" curb & gutter
- standard asphalt pavement
- concrete pavement
- concrete sidewalk
- temporary asphalt curbs

**Benchmarks**

BM #1  
"+" Cut into concrete gutter on north side of the NW Blue Parkway entrance to site.  
Elev: 1004.99'

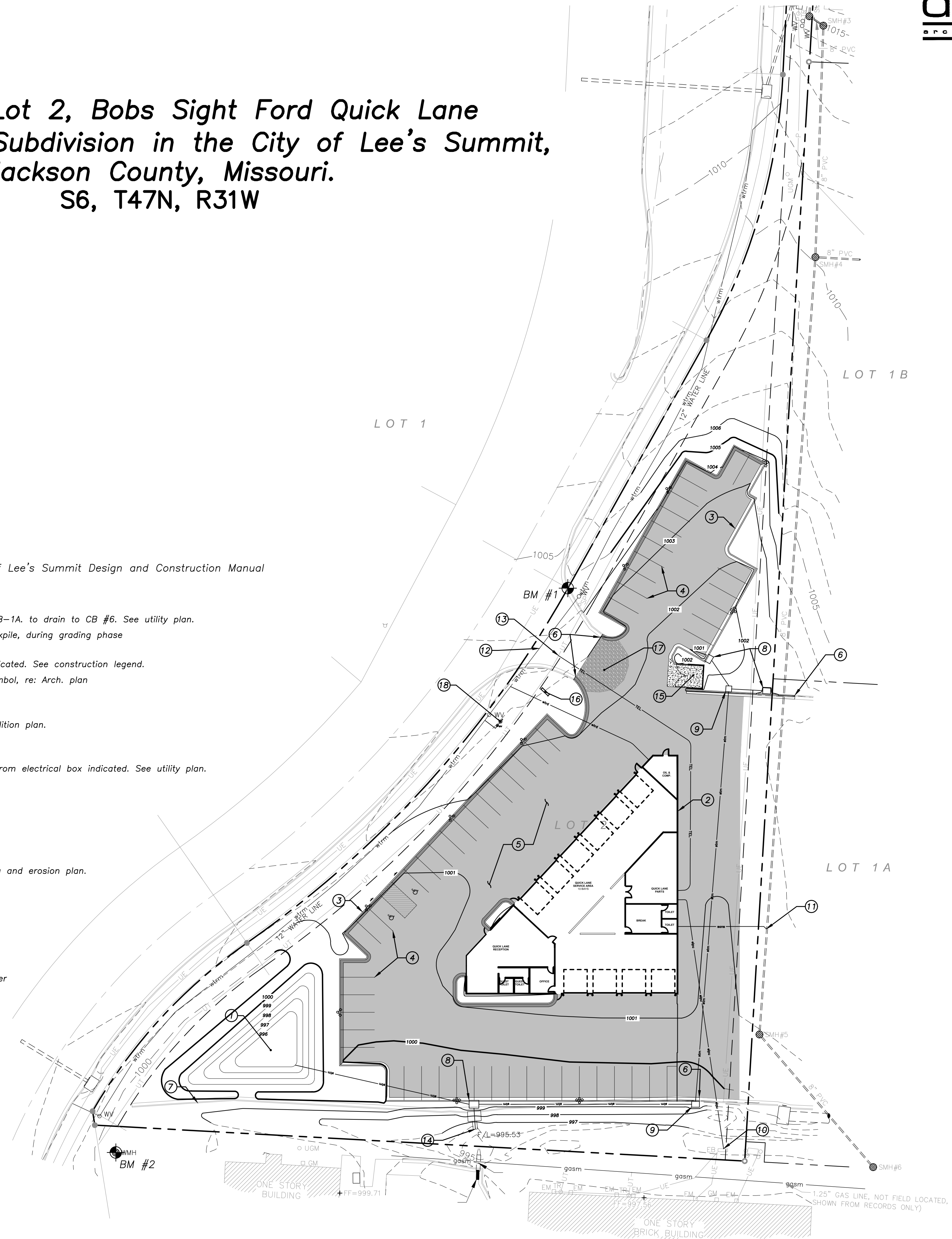
**Benchmark #2:**

Top Center of Water MH  
Elev: 999.37'

**Construction Notes:**

\*\*Note: All construction shall follow the City of Lee's Summit Design and Construction Manual as adopted by Ordinance 5813. \*\*

- Detention basin to absorb storm water from area B-1A. to drain to CB #6. See utility plan.  
Note: Area to be used as temporary soil stockpile, during grading phase
- Proposed Quick Lane building for construction.
- Construct standard curb and gutter, typ. where indicated. See construction legend.
- 4" parking striping, white, include universal ADA symbol, re: Arch. plan
- Install heavy asphalt, typ. See construction legend.
- Existing curb and gutter to remain, match existing.
- Existing curb and gutter to be removed, See demolition plan.
- Install storm catch basins where indicated.
- Install storm junction box where indicated.
- Electrical service for proposed building to original from electrical box indicated. See utility plan.
- Sanitary service tie-in location. See utility plan.
- Water service tie-in location. See utility plan.
- telephone service tie-in location. See utility plan.
- Storm daylight location. See utility plan.
- Trash enclosure, re: arch. plan
- Install Project signage.
- Install temporary construction entrance. See grading and erosion plan.
- Install fire hydrate. See utility plan.



**1** Site Plan  
1"=30'  
0 15 30 60

a proposed new facility for  
**Bob Sight Quick Lane**  
NW Blue Parkway  
Lee's Summit, Missouri

date 11.21.16  
drawn by IRW  
checked by PAM  
revisions

sheet number  
**C1.1**  
drawing type PDP  
project number 16192