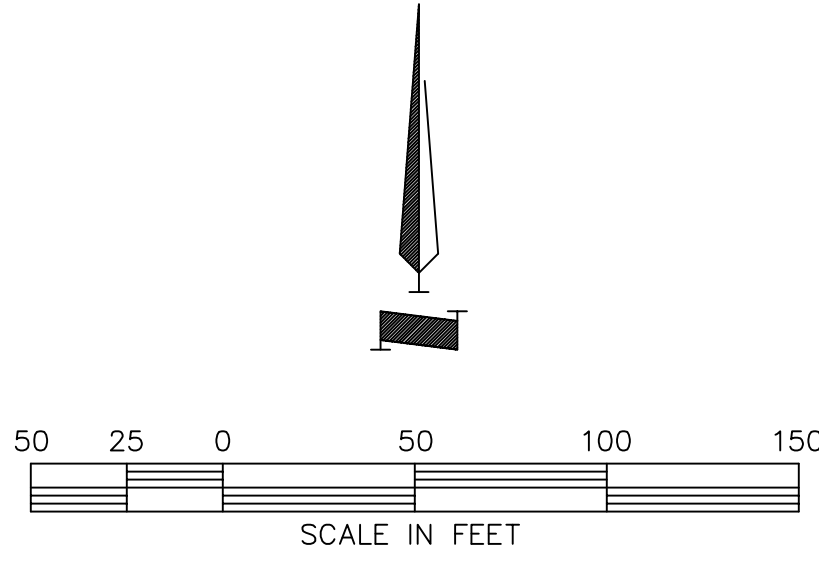


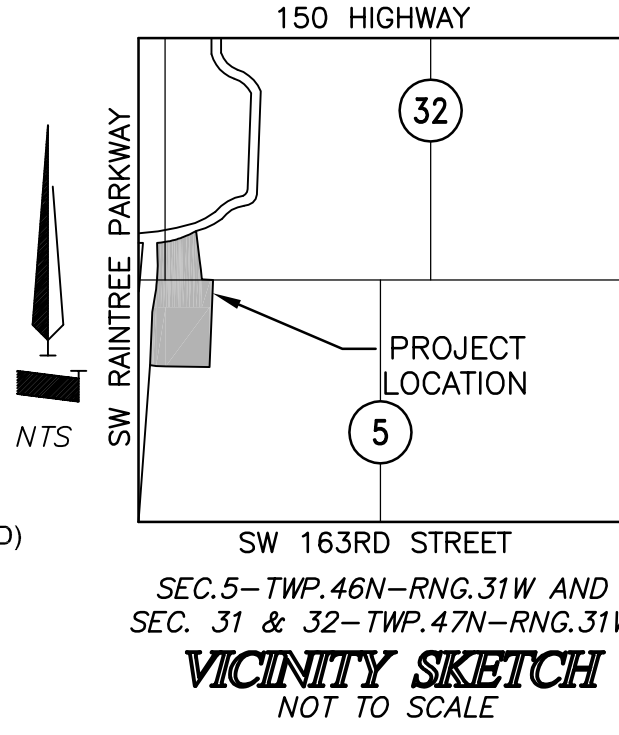
FINAL PLAT OF CREEKSIDE AT RAINTREE LOTS 1 THRU 31 AND TRACTS A THRU F

PART OF THE SW1/4 OF SECTION 32 AND THE SE 1/4 SECTION 31, T47N, R31W AND IN
THE FRACTIONAL NW1/4 OF SECTION 5, T46N, R31W
CITY OF LEE'S SUMMIT, CASS & JACKSON COUNTY, MISSOURI



LEGEND

- B/L BUILDING LINE
- N.R. NON-RADIAL BEARING
- S.F. SQUARE FEET
- U/E UTILITY EASEMENT
- A/E ACCESS EASEMENT
- (X) STATE PLANE COORDINATE
- (CH) CHORD OF CURVE
- (M) METERS
- (●) EXISTING MONUMENT (AS NOTED)
- (○) SET MONUMENT
- [XXXX] ADDRESS



STATE PLANE COORDINATES (METERS)

NO.	NORTHING	EASTING	NO.	NORTHING	EASTING
1	296192.250	860422.754	6	296526.530	860264.418
2	296195.032	860259.954	7	296571.132	860263.091
3	296198.139	860241.934	8	296607.400	860381.946
4	296359.903	860248.192	9	296459.374	860399.859
5	296403.711	860255.745	10	296457.980	860433.427
REFERENCE MONUMENT: CA-09					
	296119.662	860723.319			

CITY OF LEE'S SUMMIT:

MAYOR AND CITY COUNCIL CERTIFICATION:

THIS IS TO CERTIFY THAT THE ACCOMPANYING PLAT OF

"CREEKSIDE AT RAINTREE - LOTS 1 THRU 31 AND TRACTS A THRU F"

WAS SUBMITTED TO AND DULY APPROVED BY THE MAYOR AND CITY COUNCIL OF THE CITY OF LEE'S SUMMIT, MISSOURI THIS _____ DAY OF _____ 2017, BY ORDINANCE NO. _____

RANDALL L. RHOADS
MAYOR

DENISE R. CHISUM, MMC
CITY CLERK

APPROVED: PUBLIC WORKS / ENGINEERING

GEORGE M. BINGER III, P.E.
CITY ENGINEER

APPROVED: PLANNING & SPECIAL PROJECTS

ROBERT G. MCKAY, AICP
DIRECTOR

APPROVED: PLANNING COMMISSION

FRED DEMORO
SECRETARY

APPROVED: JACKSON COUNTY GIS APPROVED: CASS COUNTY ASSESSOR

JACKSON COUNTY GIS DEPT. _____
DATE BOB HUSTON DATE

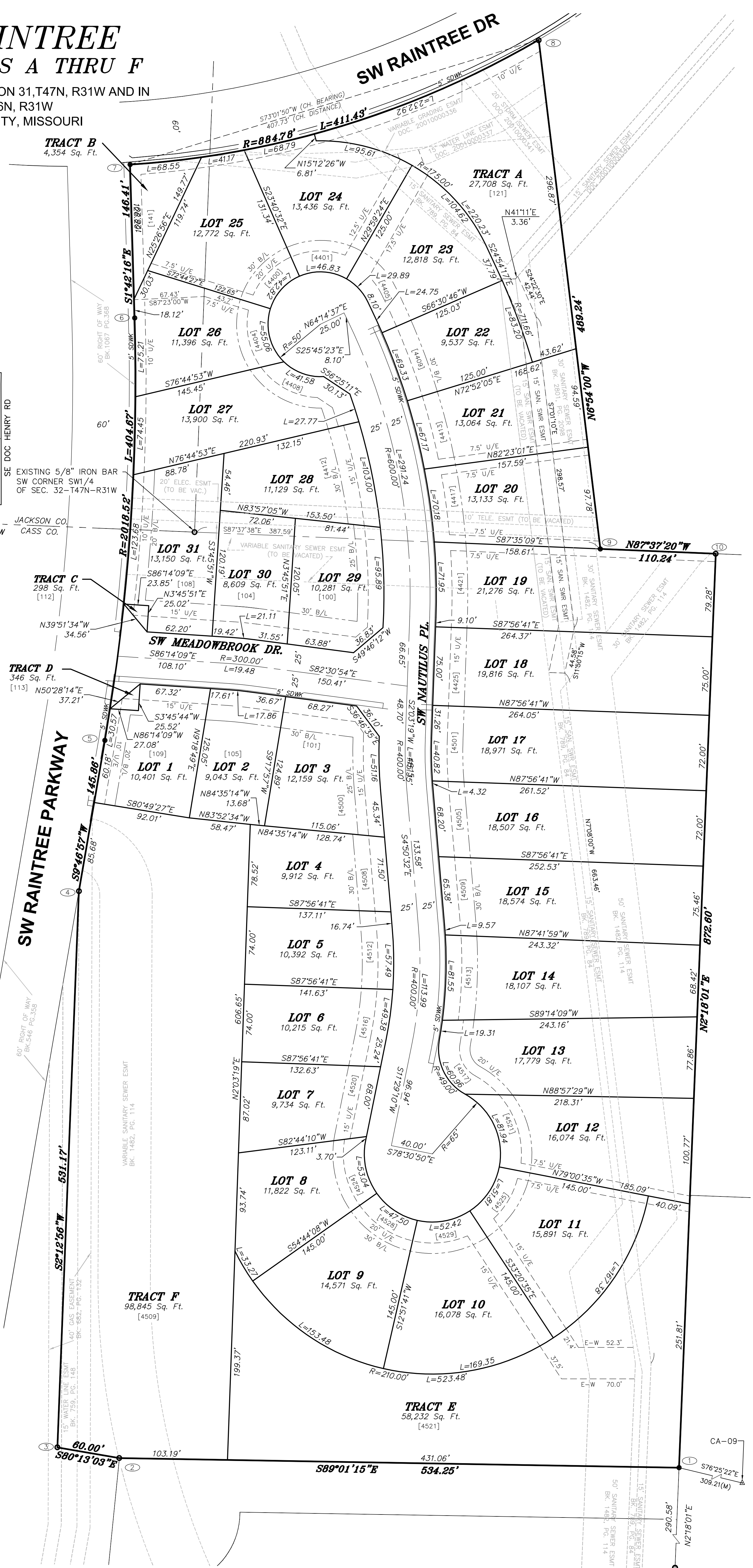
SURVEYOR'S NOTES:

- 1) THIS PROPERTY IS NOT WITHIN A FLOOD ZONE ACCORDING TO THE FEMA FLOOD INSURANCE RATE MAP (FIRM), MAP NUMBER 29095C0535G, EFFECTIVE DATE JANUARY 20, 2017.
- 2) NO ABANDONED OIL OR GAS WELL IS IDENTIFIED ON THIS DRAWING. LOCATIONS PER MISSOURI DEPARTMENT OF NATURAL RESOURCES PERMITTED OIL AND GAS DATABASE, DATED 2014.
- 3) THE FOLLOWING STANDARD MONUMENTATION WILL BE SET UPON COMPLETION OF THE CONSTRUCTION ACTIVITIES WITH THIS PLAT OR WITHIN 12 MONTHS FOLLOWING THE RECORDING OF THIS PLAT, WHICH EVER IS EARLIER. SEMI-PERMANENT MONUMENTS: 1/2" IRON BAR WITH PLASTIC CAP STAMPED "HDR INC" SET AT ALL LOT CORNERS. CURBS ARE NOTCHED AT THE PROLONGATION OF EACH INTERIOR LOT LINE.
- 4) THE BEARINGS AND COORDINATES SHOWN ON THIS PLAT ARE BASED UPON THE MISSOURI STATE PLANE COORDINATE SYSTEM, WEST ZONE, UTILIZING CASS COUNTY, MISSOURI GEOGRAPHIC REFERENCE SYSTEM MONUMENT CA-09 (1997 ADJUSTMENT) WITH AN OVERALL GRID SCALE FACTOR OF 0.9999034.
- 5) THE PROPERTY SHOWN HEREON IS CLASSIFIED AS URBAN PROPERTY BY 10 CSR 30-2.030 AND 4 CSR 30-16.030.
- 6) NO LOTS IN THIS SUBDIVISION SHALL HAVE DIRECT ACCESS (DRIVEWAY CONNECTION) TO SW RAINTREE PARKWAY OR SW RAINTREE DRIVE.

SURVEYOR'S DECLARATION:

I HEREBY DECLARE THAT WE HAVE PERFORMED A SURVEY AND PREPARED THE ACCOMPANYING PLAT OF THE PREMISES DESCRIBED HEREON WHICH MEET OR EXCEED THE CURRENT "MISSOURI MINIMUM STANDARDS FOR PROPERTY BOUNDARY SURVEYS" AS JOINTLY ADOPTED BY THE MISSOURI BOARD FOR ARCHITECTS, PROFESSIONAL ENGINEERS, PROFESSIONAL LAND SURVEYORS, AND LANDSCAPE ARCHITECTS AND THE MISSOURI DEPARTMENT OF NATURAL RESOURCES, DIVISION OF GEOLOGICAL SURVEY AND RESOURCES ASSESSMENT AND THAT THE RESULTS OF SAID SURVEY ARE REPRESENTED ON THIS PLAT TO THE BEST OF MY PROFESSIONAL KNOWLEDGE AND BELIEF.

JOHNNY YAKLE, PLS-2001001917 _____
DATE



DRAWING NO. 10028825	FINAL PLAT CREEKSIDE AT RAINTREE LOTS 1 THRU 31 AND TRACTS A THRU F CITY OF LEE'S SUMMIT, CASS & JACKSON COUNTY, MO	HDR HDR ENGINEERING, INC. 3741 N.E. TROON DRIVE LEE'S SUMMIT, MO 64064 816-347-1100 • FAX 816-347-1197 MISSOURI STATE CERTIFICATE OF AUTHORITY #000856	NO. DATE BY	EXTERNAL REFERENCE
DATE 2 OF 2	PROJECT NO. 10028825	DATE APR 18 2017 11:05AM	NO. DATE BY	IMAGE REFERENCE