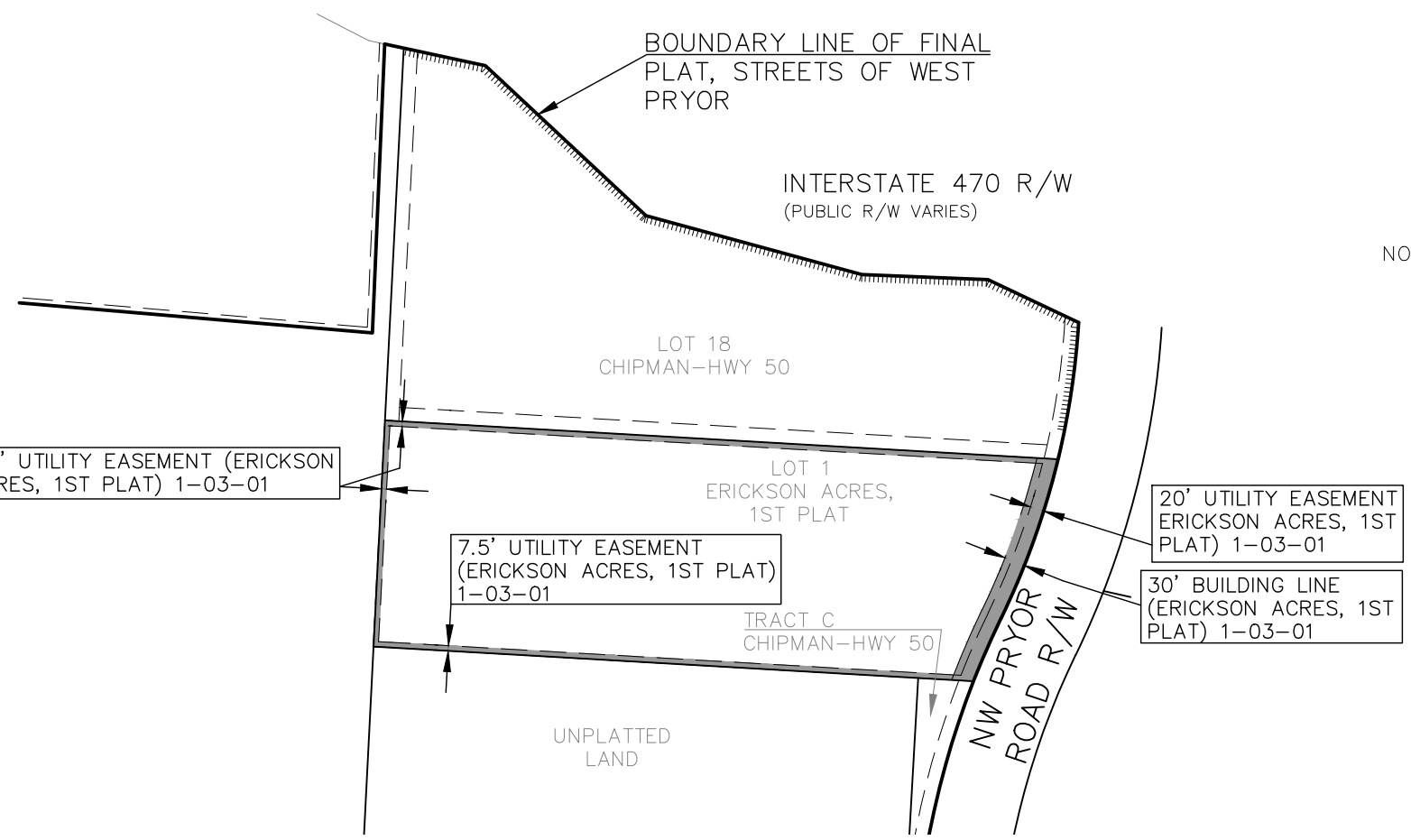




NOT TO SCALE



LEGEND

 EASEMENT AND OR BUILDING LINE TO BE VACATED THIS DOCUMENT



2319 NORTH JACKSON | P.O. BOX 1304  
 JUNCTION CITY, KANSAS 66441  
 PH. (785) 762-5040 | FAX (785) 762-7744  
 jc@kveng.com | www.kveng.com

**KAW VALLEY ENGINEERING**

SHEET 1 OF 1  
 SEPTEMBER 20, 2019  
 7067-1-EXBZK\_ESMT VACA ERICKSON