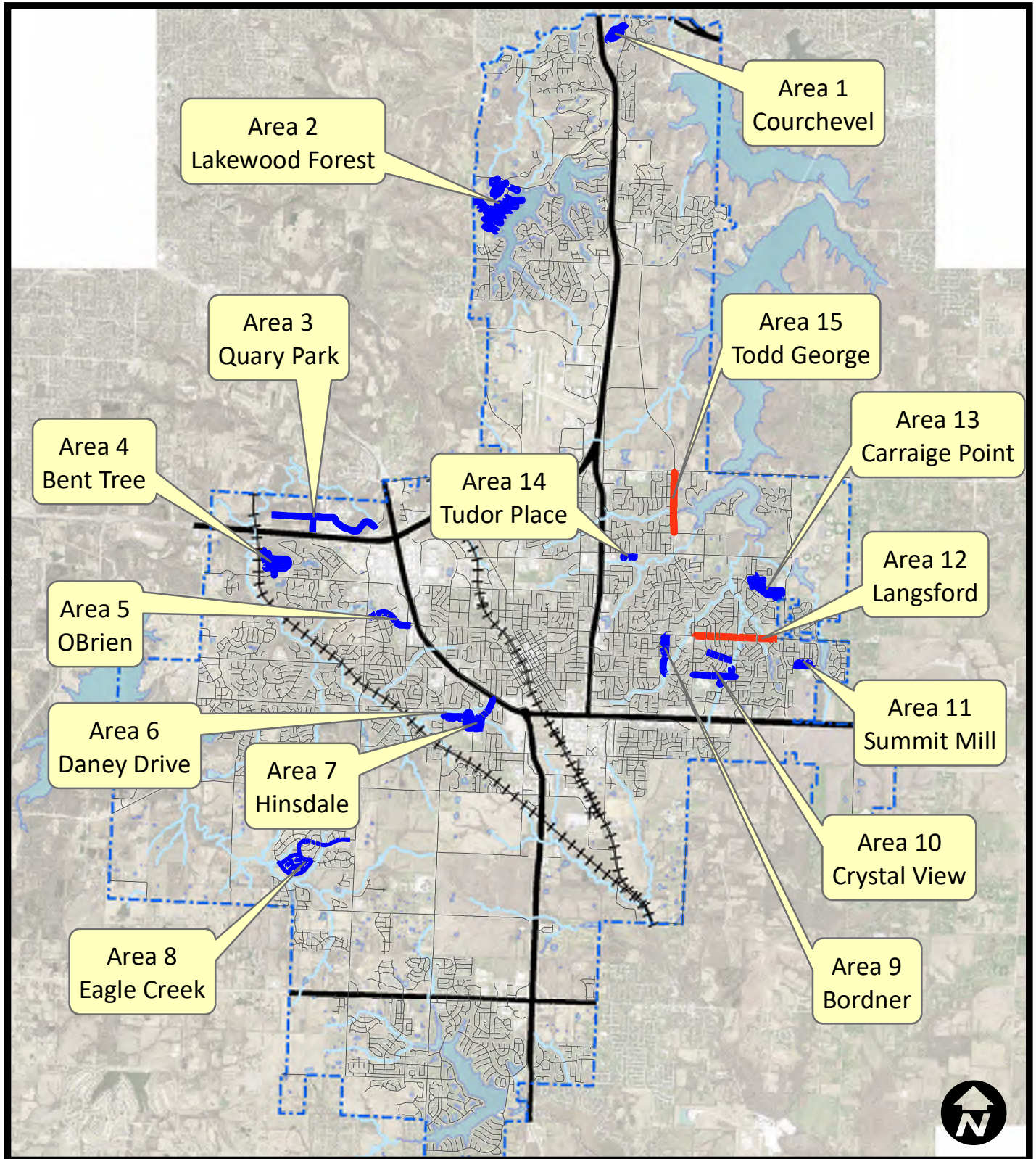


| | | | | | | | | | | | | | | | | | | | | | | | |
|----|---------------------|-----------------|------------------------------|----|------|---|-------|----|--------|-------|-------|-------|--|--|--|--|----|---|--|--|--|---|--|
| 12 | NE LANGSFORD RD | SE GREYSTONE DR | 400' West of NE BLACKWELL RD | 48 | 5050 | 0 | 3,199 | FW | 26,933 | | | | | | | | | | | | | | |
| 13 | NE CAROUSEL LN | NE CHIPMAN RD | NE BRIDGEPORT DR | 24 | 855 | 1 | 314 | FW | 2,603 | | | | | | | | | | | | | | |
| 13 | NE CAROUSEL CT | NE CAROUSEL LN | END OF STREET | 24 | 455 | 1 | 187 | FW | 1,536 | | | | | | | | | | | | | | |
| 13 | NE OLD PAINT RD | END OF STREET | NE HORSESHOE DR | 24 | 2450 | 1 | 819 | FW | 6,856 | | | | | | | | | | | | | | |
| 13 | NE HORSESHOE DR | NE OLD PAINT RD | NE OLD PAINT RD | 24 | 1455 | 1 | 504 | FW | 4,203 | | | | | | | | | | | | | | |
| 13 | NE OLD PAINT CT | NE OLD PAINT RD | END OF STREET | 24 | 370 | 1 | 160 | FW | 1,310 | | | | | | | | | | | | | | |
| 13 | NE WRANGLER WAY | NE CHIPMAN RD | NE OLD PAINT RD | 24 | 205 | 1 | 108 | FW | 870 | | | | | | | | | | | | | | |
| 14 | NE BANNER ST | END OF STREET | NE SCRUGGS RD | 24 | 355 | 1 | 155 | FW | 1,270 | | | | | | | | | | | | | | |
| 14 | NE BALL DR | END OF STREET | NE SCRUGGS RD | 24 | 260 | 1 | 125 | FW | 1,016 | | | | | | | | | | | | | | |
| 14 | NE BARNES DR | END OF STREET | NE SCRUGGS RD | 24 | 270 | 1 | 129 | FW | 1,043 | | | | | | | | | | | | | | |
| 15 | NE TODD GEORGE PKWY | NE COLBERN RD | NE TUDOR RD | 48 | 4050 | 0 | 2,565 | FW | 21,600 | | 1,485 | 1,750 | | | | | 20 | 3 | | | | 2 | |
| | Full Depth Patching | | | | | | | | | 1,656 | | | | | | | | | | | | | |

| | | | | | | | | | | | | | | | | | | | |
|-------------|-----------|-----------|--------|----------------|-----------------|-----------------|------------------|-----------------------|------------------------|------------------------|-------------------------|------------------------|--------------------------|---------------------------|---------------------|----------------------------|----------------------|-----------------------|---|
| 33,122 | 0 | 276,936 | 1,656 | 0 | 3,155 | 4,230 | 13,100 | 0 | 305 | 0 | 0 | 323 | 78 | 43 | 5 | 0 | 0 | 3 | 0 |
| \$84.10 | \$2.16 | \$195.00 | \$0.20 | \$0.29 | \$0.29 | \$0.29 | \$0.29 | \$10.80 | \$5.75 | \$9.20 | \$15.60 | \$25.20 | \$420.00 | \$420.00 | \$527.00 | \$720.00 | \$660.00 | \$390.00 | |
| \$2,785,521 | \$598,181 | \$322,935 | \$0 | \$915 | \$1,227 | \$3,799 | \$0 | \$3,294 | \$0 | \$0 | \$5,039 | \$1,966 | \$18,060 | \$2,100 | \$0 | \$0 | \$1,980 | \$0 | |
| | | | | 4" Solid White | 4" Broken White | 4" Solid Yellow | 4" Broken Yellow | 6" Solid White Thermo | 6" Dashed White Thermo | 12" Solid White Thermo | 12" Solid Yellow Thermo | 24" Solid White Thermo | Left Arrow Symbol Thermo | Right Arrow Symbol Thermo | 2 Head Arrow Symbol | 2 Head Arrow Symbol Thermo | "ONLY" Symbol Thermo | ADA WheelChair Symbol | |

\$3,745,016.25

City of Lee's Summit Mill & Overlay FY23 - Project Number 790-OV

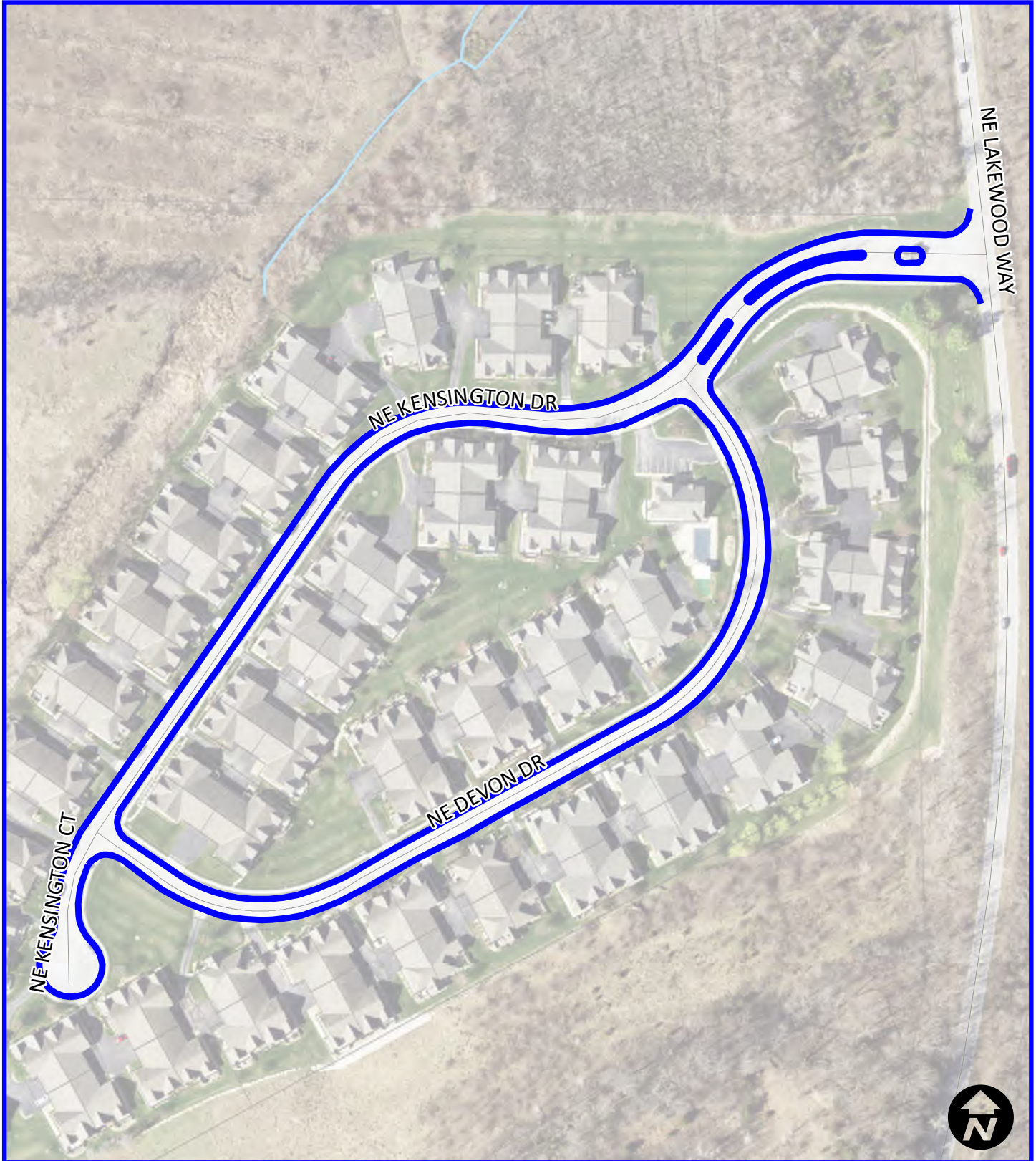


FY23 Overlay Overview

Legend

- Mill & Overlay RC5-01
- Mill & Overlay-Mill & Fill RC5-01

City of Lee's Summit
Mill & Overlay FY23- Project Number 790-OV



Area 1
Courchevel

Legend

- Mill & Overlay RC5-01
- Mill & Overlay-Mill & Fill RC5-01

City of Lee's Summit Mill & Overlay FY23- Project Number 790-OV

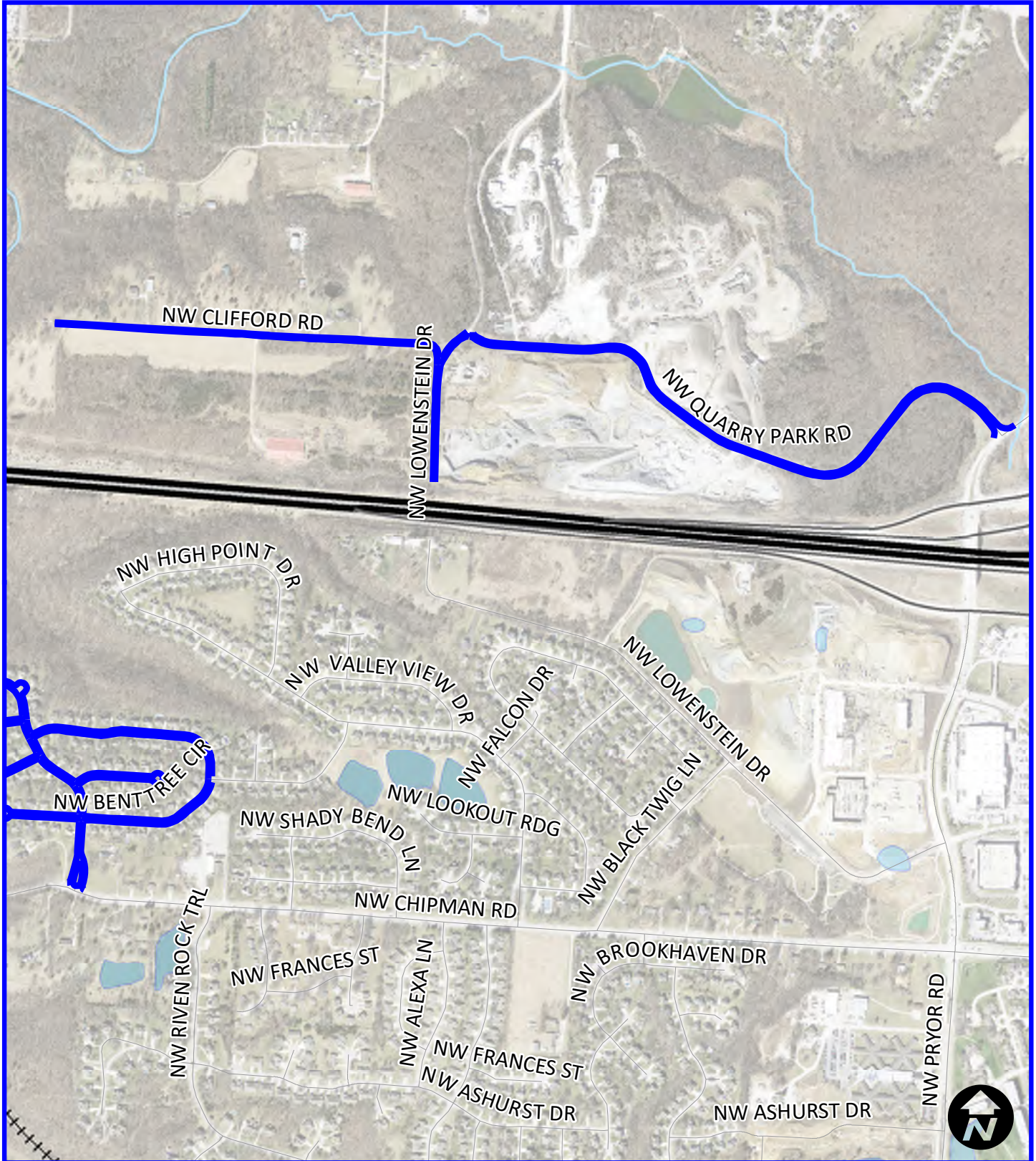


**Area 2
Lakewood Forest**

Legend

- Mill & Overlay RC5-01
- Mill & Overlay-Mill & Fill RC5-01

City of Lee's Summit Mill & Overlay FY23- Project Number 790-OV



Area 3
Quarry Park

Legend

- Mill & Overlay RC5-01
- Mill & Overlay-Mill & Fill RC5-01

City of Lee's Summit
Mill & Overlay FY23- Project Number 790-OV



Area 4
Bent Tree

Legend

- Mill & Overlay RC5-01
- Mill & Overlay-Mill & Fill RC5-01

City of Lee's Summit Mill & Overlay FY23- Project Number 790-OV

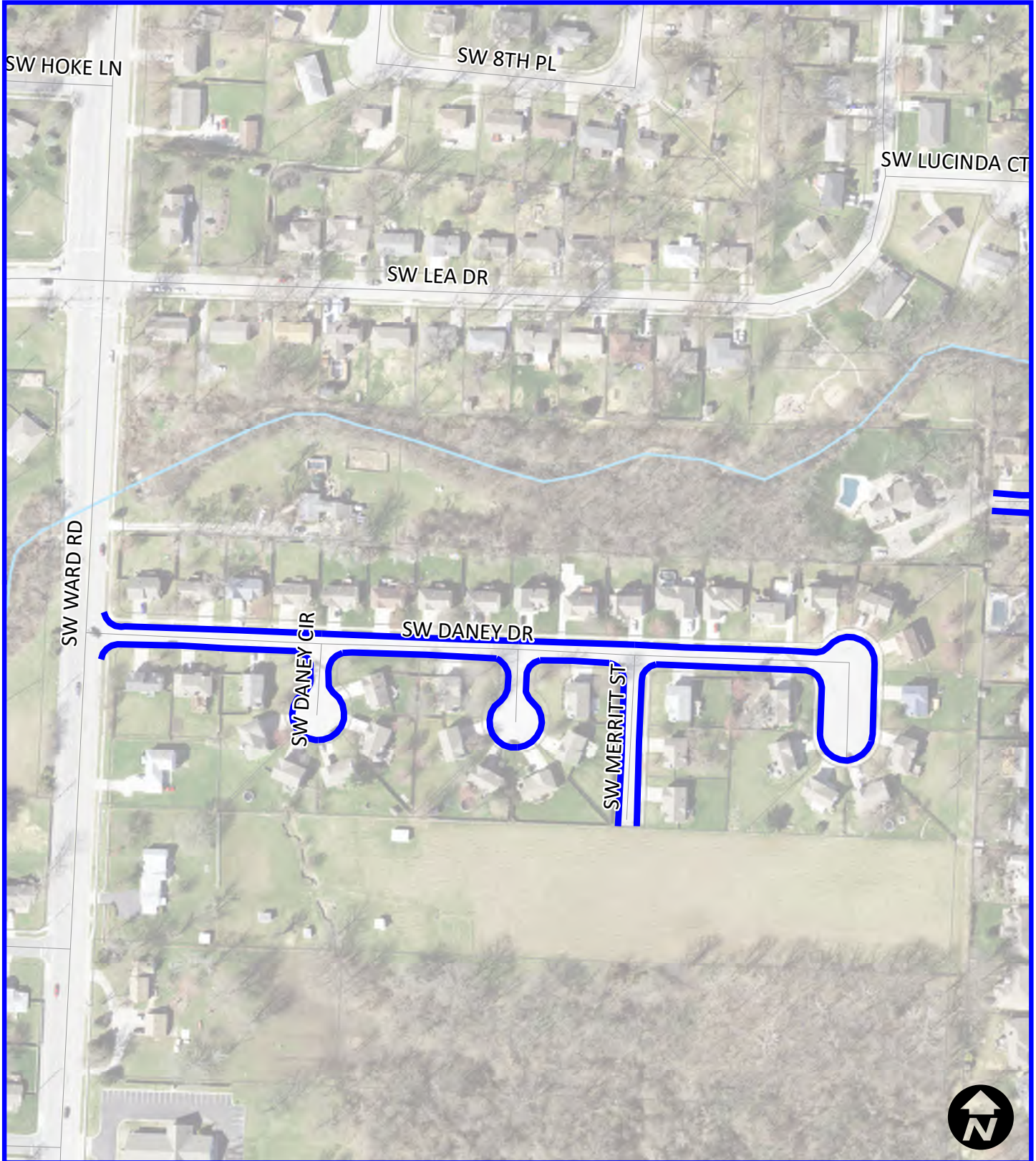


Area 5
O'Brien

Legend

- Mill & Overlay RC5-01
- Mill & Overlay-Mill & Fill RC5-01

City of Lee's Summit Mill & Overlay FY23- Project Number 790-OV

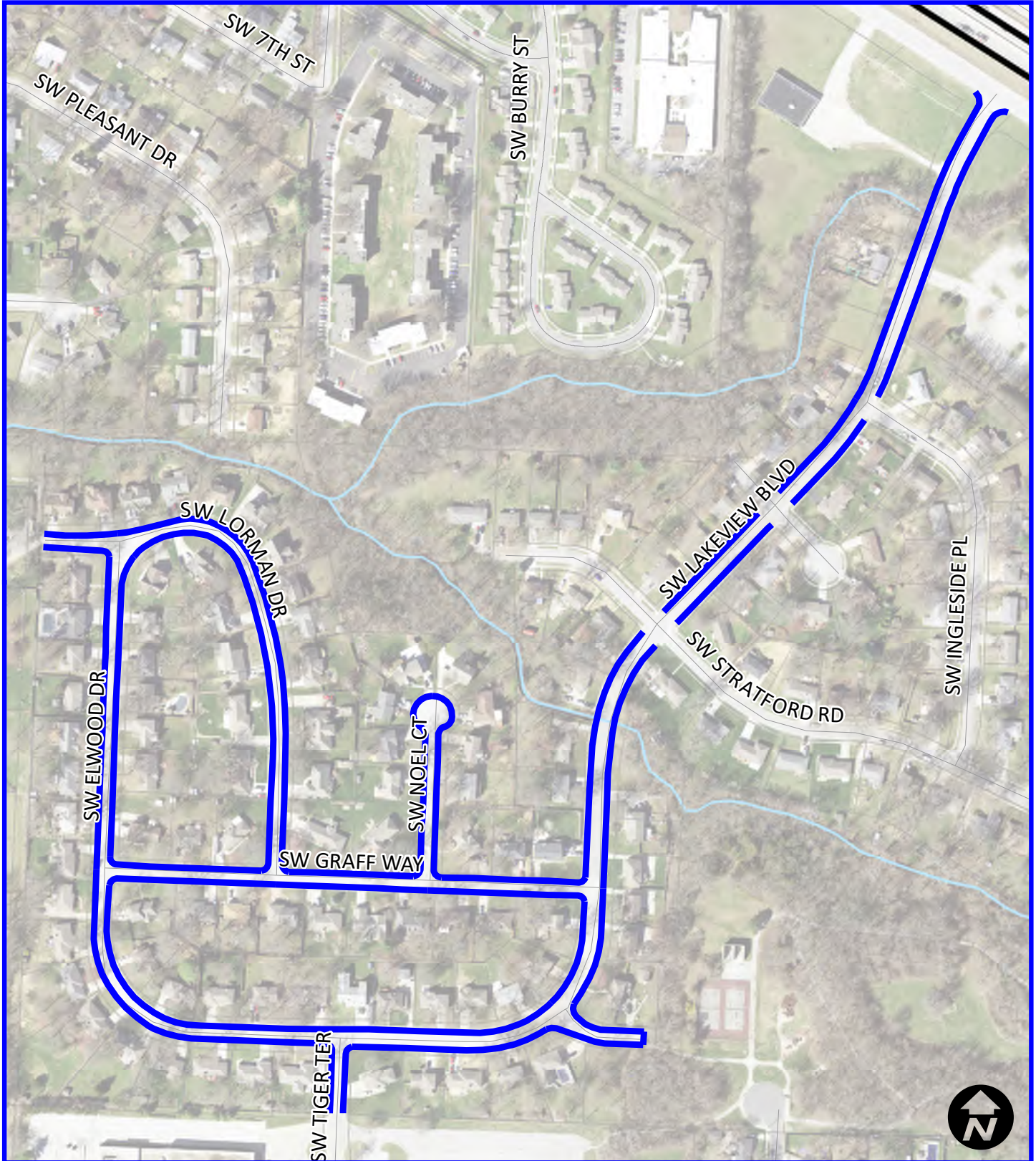


Area 6
Daney Drive

Legend

- Mill & Overlay RC5-01
- Mill & Overlay-Mill & Fill RC5-01

City of Lee's Summit Mill & Overlay FY23- Project Number 790-OV

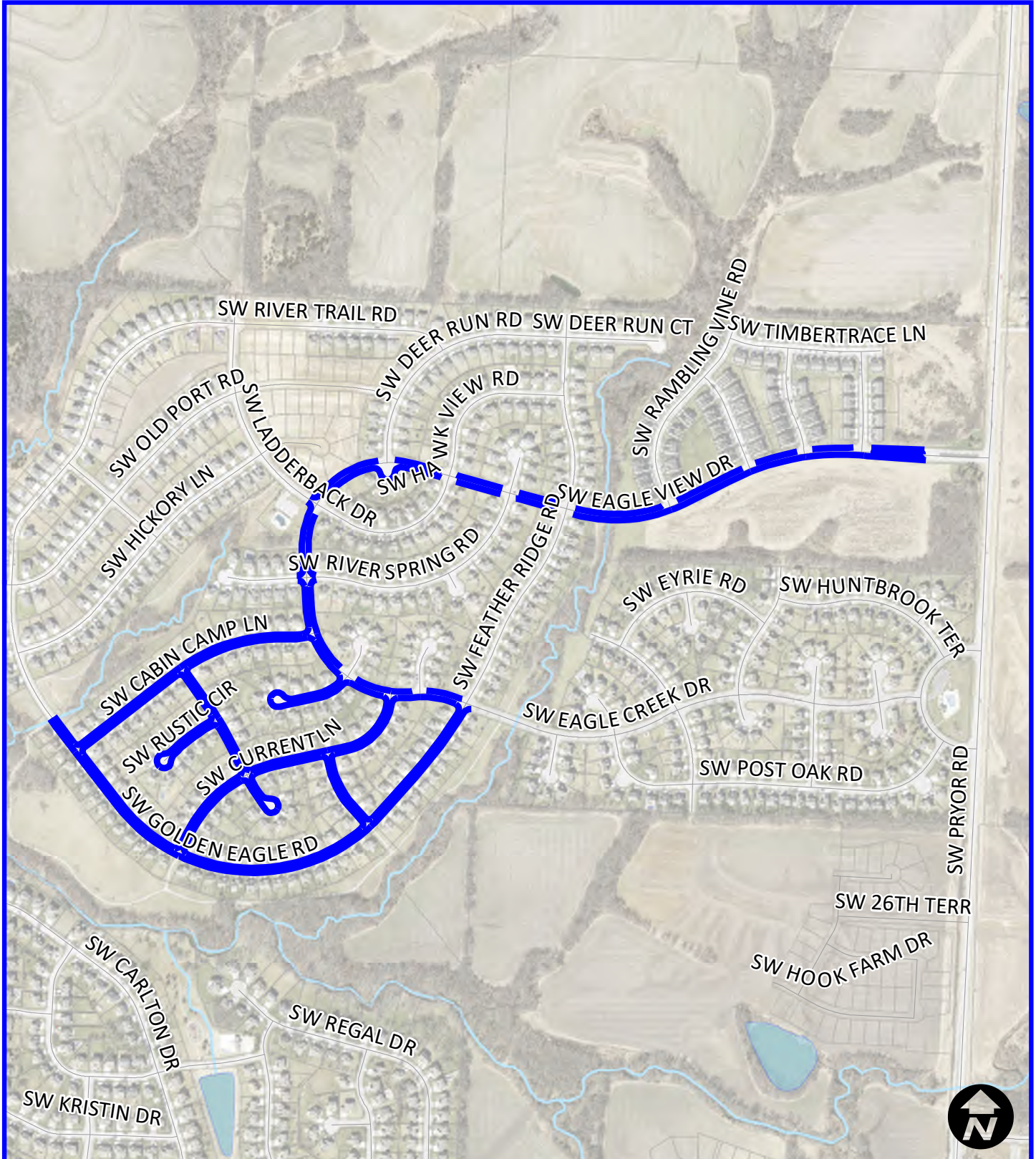


Area 7
Hinsdale

Legend

- Mill & Overlay RC5-01
- Mill & Overlay-Mill & Fill RC5-01

City of Lee's Summit Mill & Overlay FY23- Project Number 790-OV

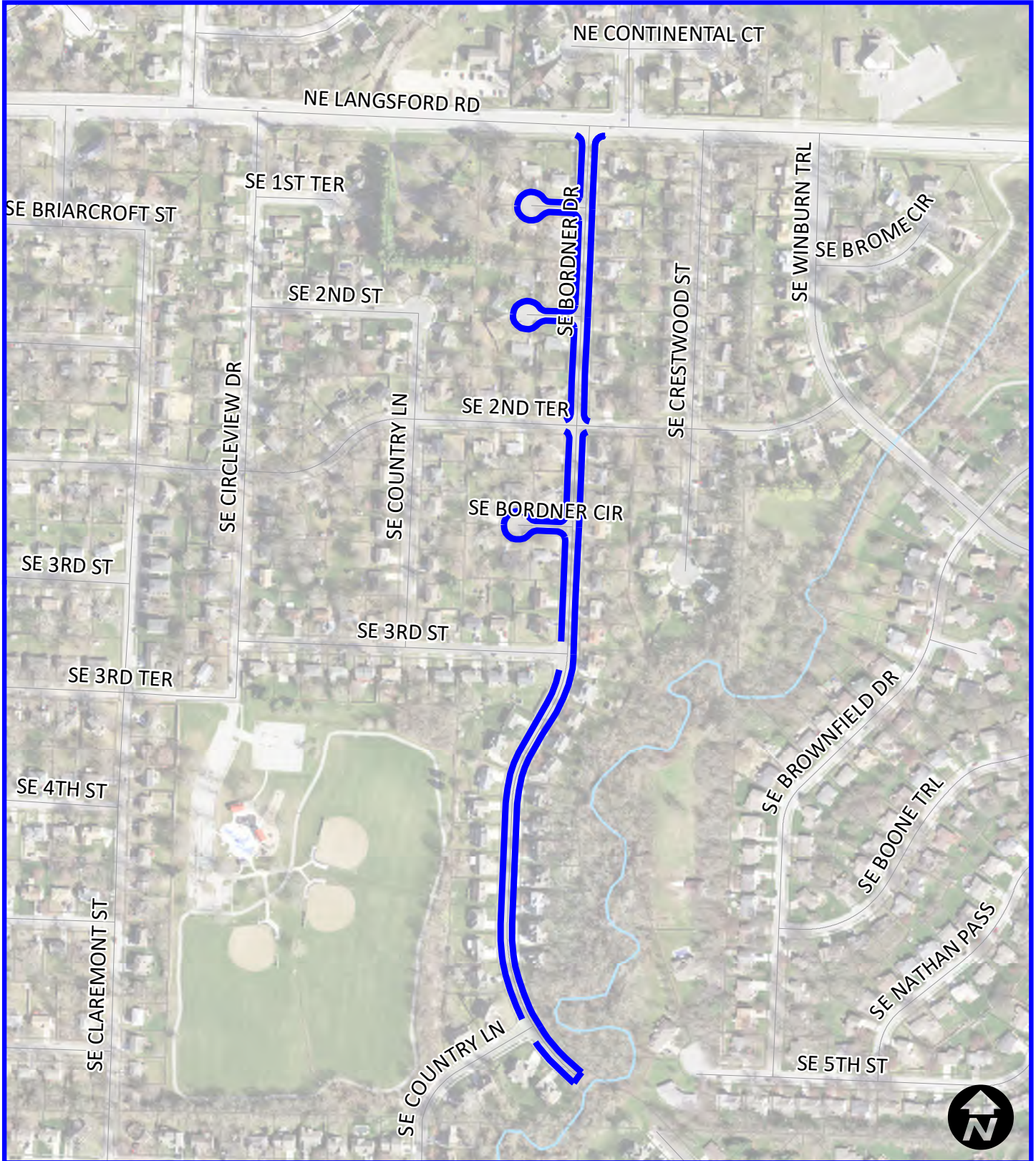


Area 8
Eagle Creek

Legend

- Mill & Overlay RC5-01
- Mill & Overlay-Mill & Fill RC5-01

City of Lee's Summit Mill & Overlay FY23- Project Number 790-OV

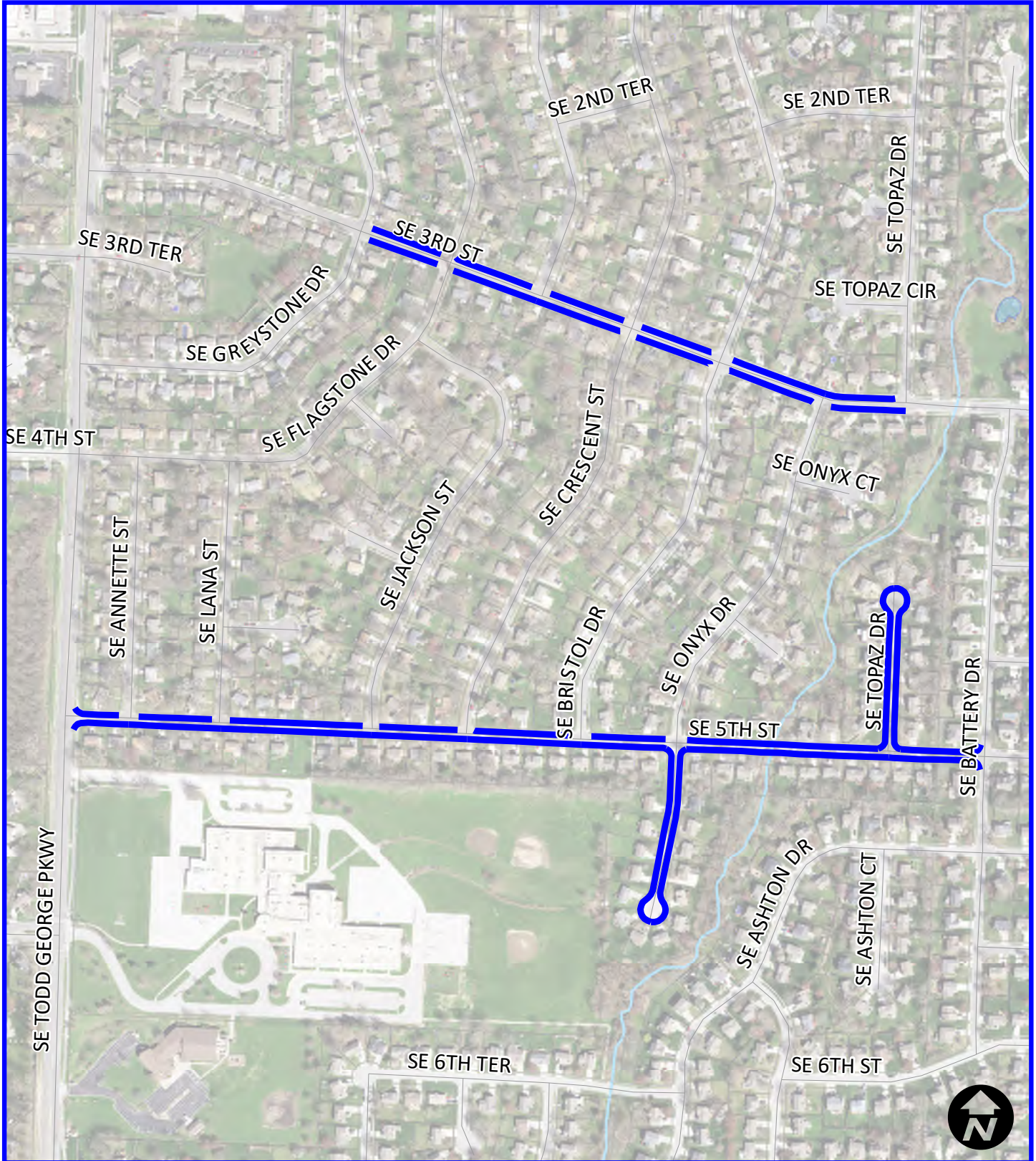


**Area 9
Bordner Drive**

Legend

- Mill & Overlay RC5-01
- Mill & Overlay-Mill & Fill RC5-01

City of Lee's Summit Mill & Overlay FY23- Project Number 790-OV

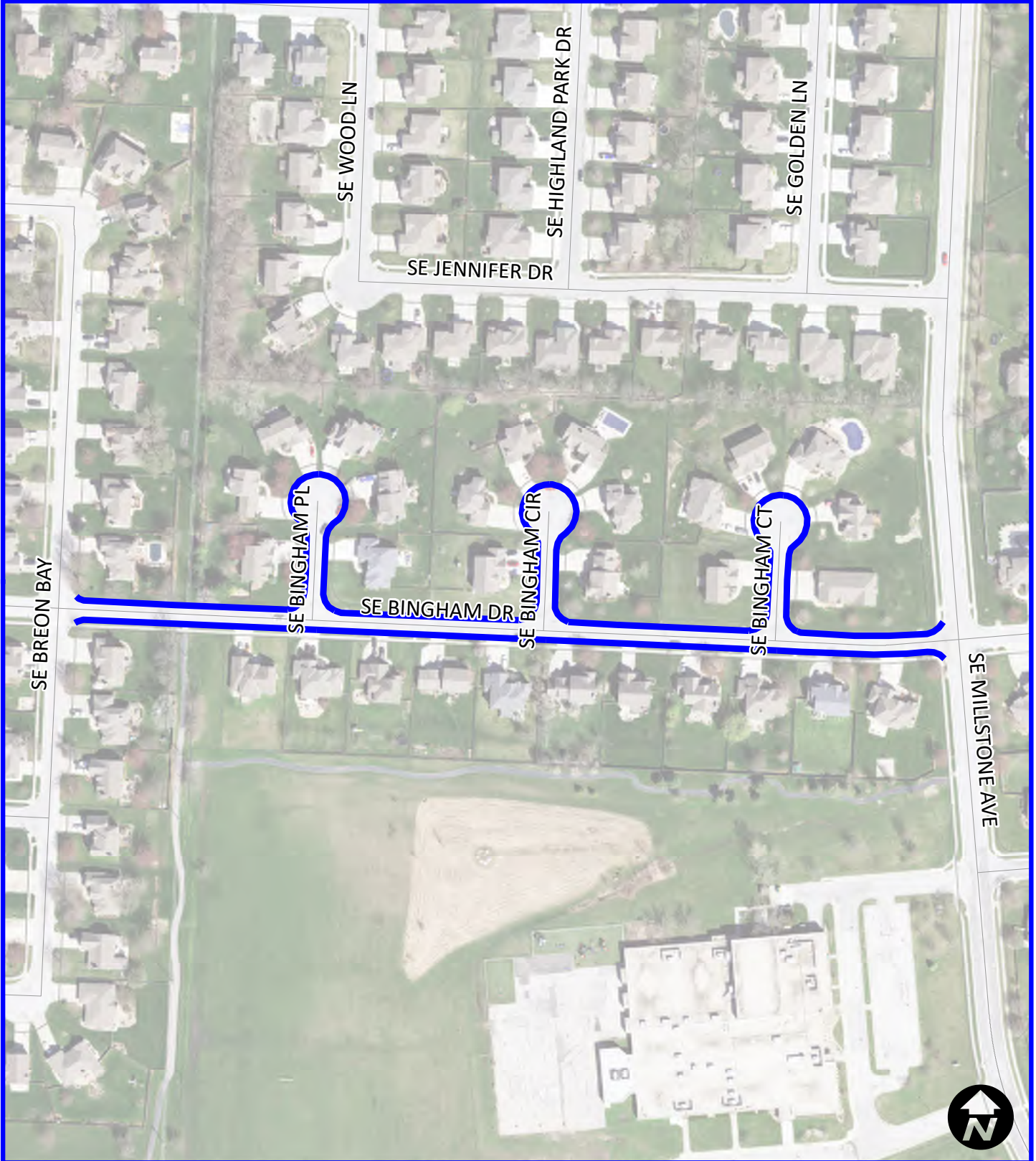


Area 10
Crystal View

Legend

- Mill & Overlay RC5-01
- Mill & Overlay-Mill & Fill RC5-01

City of Lee's Summit Mill & Overlay FY23- Project Number 790-OV

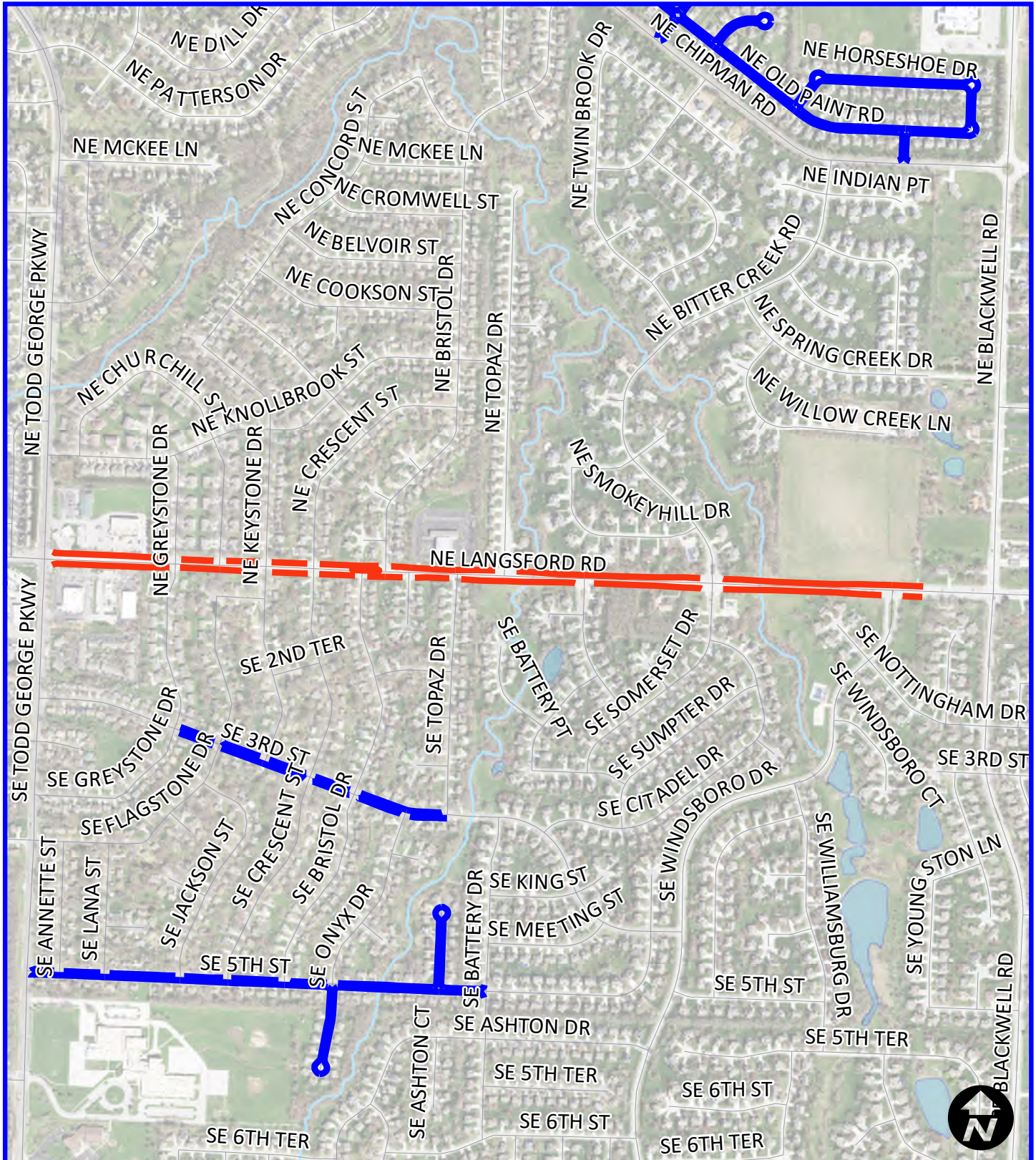


Area 11
Summit Mill

Legend

- Mill & Overlay RC5-01
- Mill & Overlay-Mill & Fill RC5-01

City of Lee's Summit Mill & Overlay FY23- Project Number 790-OV

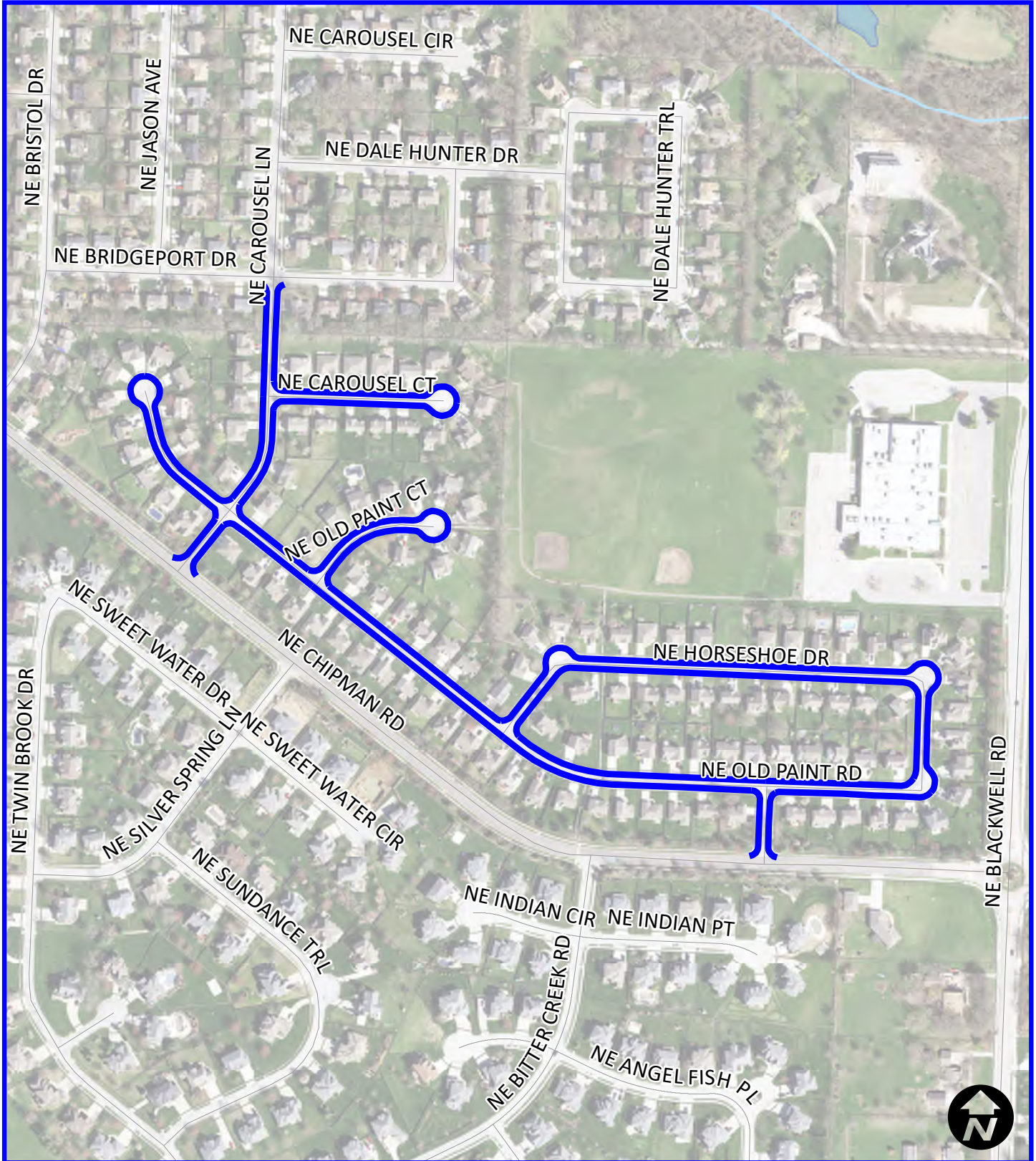


Area 12
Langsford

Legend

- Mill & Overlay RC5-01
- Mill & Overlay-Mill & Fill RC5-01

City of Lee's Summit Mill & Overlay FY23- Project Number 790-OV

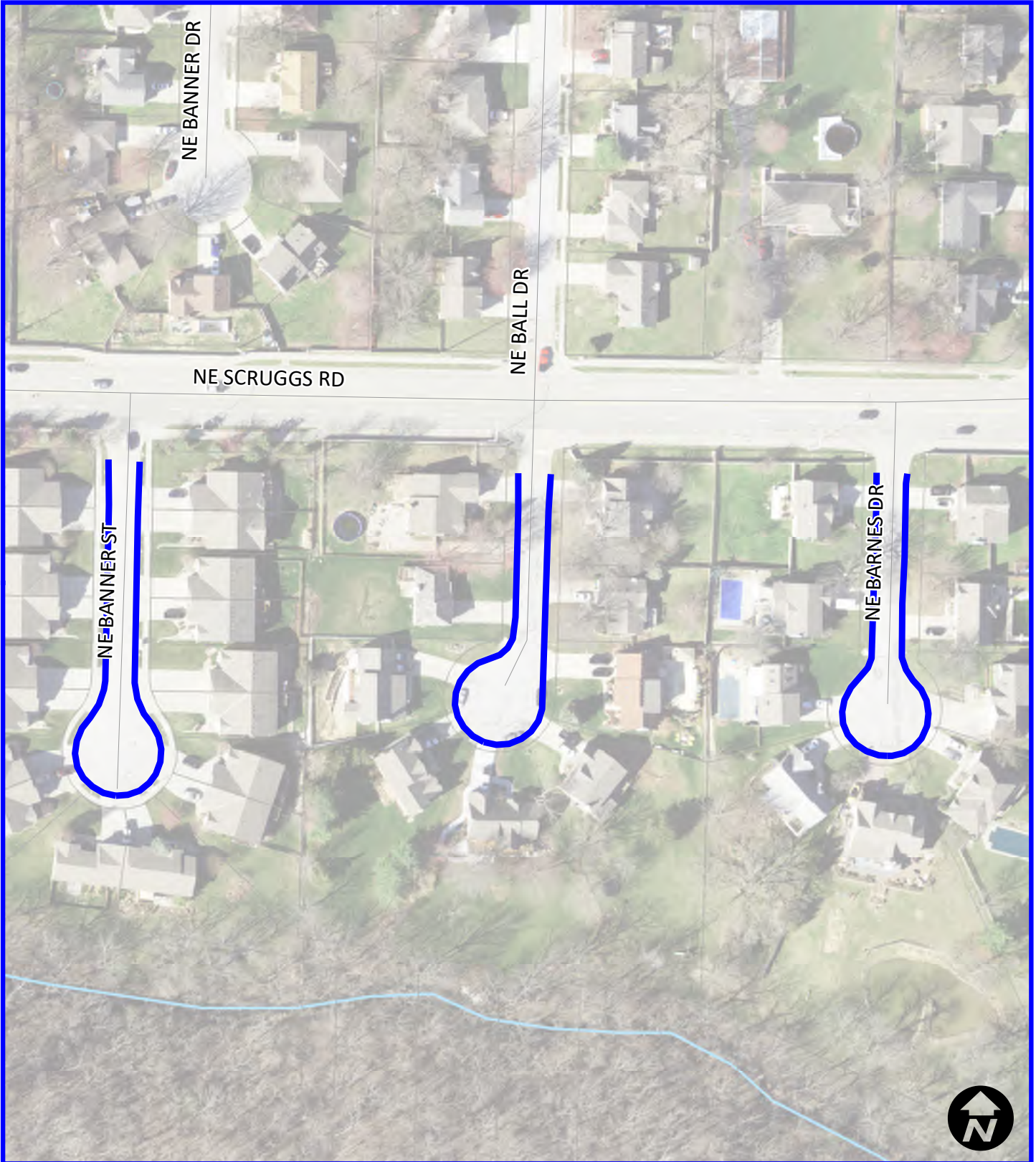


Area 13
Carriage Point

Legend

- Mill & Overlay RC5-01
- Mill & Overlay-Mill & Fill RC5-01

City of Lee's Summit Mill & Overlay FY23- Project Number 790-OV

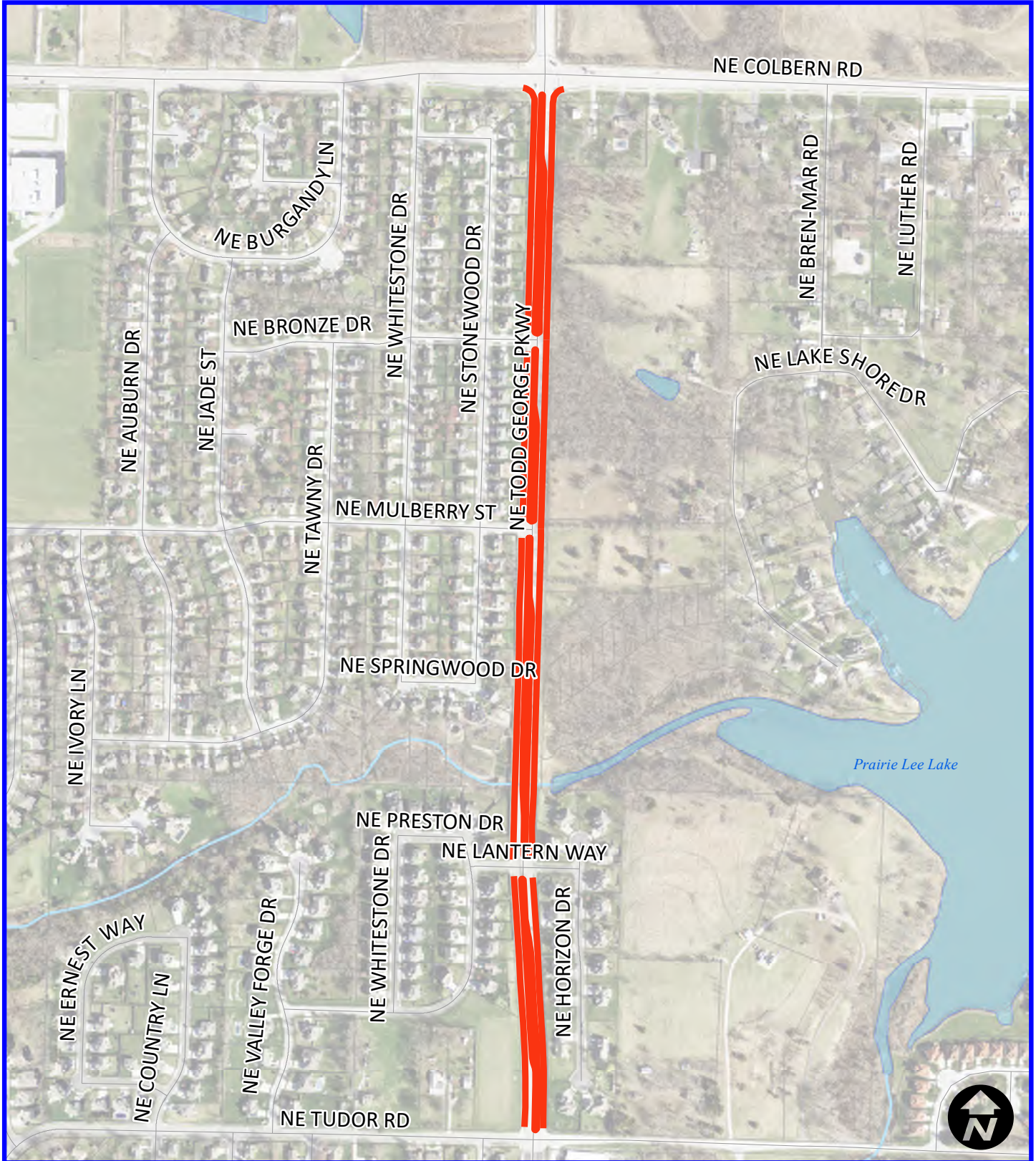


Area 14
Tudor Plae

Legend

- Mill & Overlay RC5-01
- Mill & Overlay-Mill & Fill RC5-01

City of Lee's Summit Mill & Overlay FY23- Project Number 790-OV



Area 15
Todd George

Legend

- Mill & Overlay RC5-01
- Mill & Overlay-Mill & Fill RC5-01