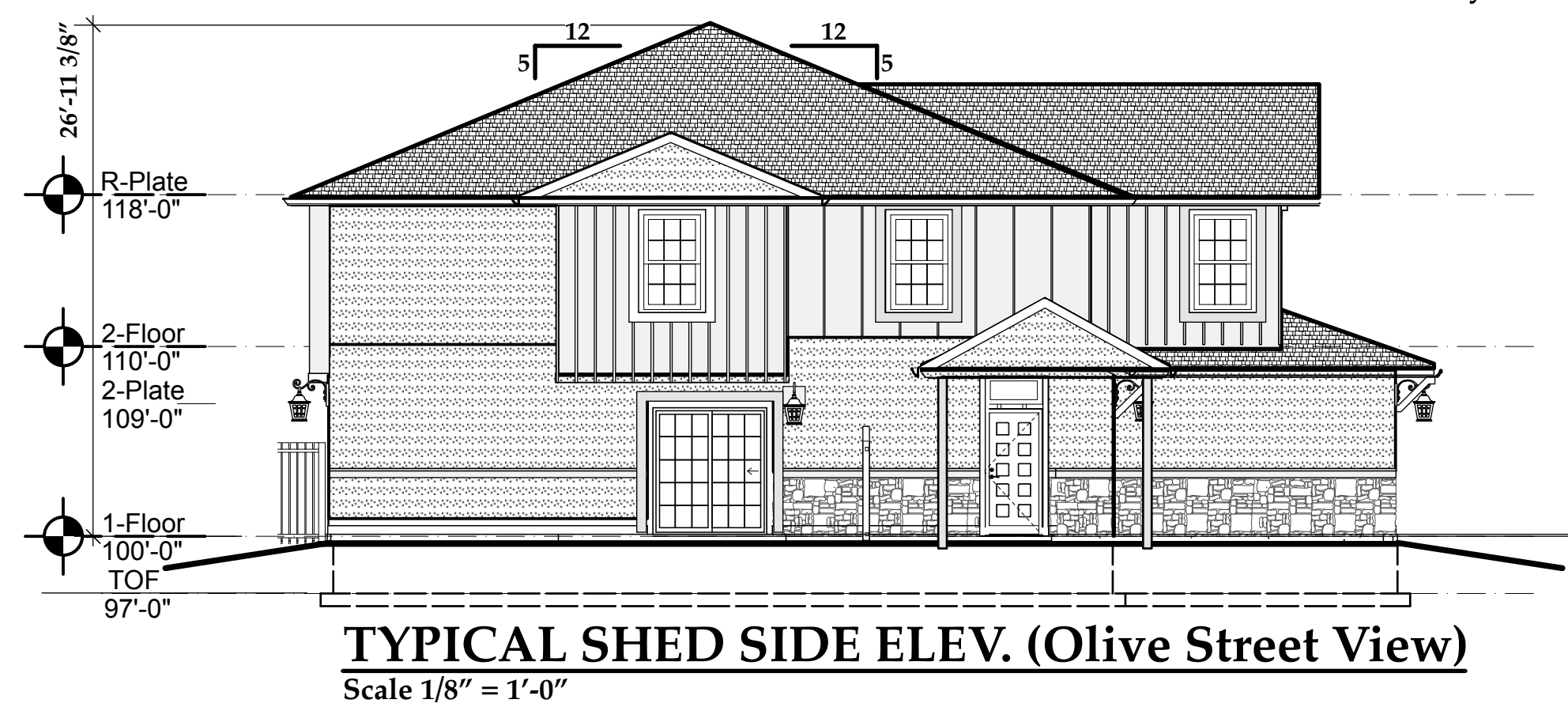


BURTON TOWNHOMES
 ??? Thru ??? Olive Street
 Lee's Summit, Missouri

BUILDING CODE & DESIGN REQUIREMENTS

Tenant Identification:	Spec. NEW 2 & 3 Bedroom, Attached Two Story Townhouse 4-Plex, Slab On Grade Units For Resale.	
Applicable Building Codes:	2012 International Residential Code, 2012 International Mechanical Code, 2012 International Plumbing Code, 2012 Life Safety Code, 2012 International Fire Code, 2006 National Electrical Code, And ANSI A117.1-2006As Ammended And Adopted By The City Of Lee's Summit, Missouri Per The Date Of This Submittal.	
Occupancy Type:	R (Residential)	
Occupant Load:	Gross Area	
	First Floor Living Area	621 Sq. Ft.
	First Floor Garage Area	269 Sq. Ft.
	Second Floor Living Area	793 Sq. Ft.
	Gross Unit Area (living & Garage)	1,683 Sq. Ft.
	Gross Area	6,732 Sq. Ft.
Building Construction Type:	Type 5B	
Scope Of Work:	New Construction On Green Field Site. (9) 4-Plex Buildings To Be Constructed On This Site. Units Are To Be Provided With Gas Range, Stove And Water Heater.	

NOTE:
 All Materials, Roof Slopes Floor To Floor Heights, Total Elevation Height Are Similar Unless Otherwise Noted. Colors And Textures Will Vary.



NOTE:
 All Materials, Roof Slopes Floor To Floor Heights, Total Elevation Height Are Similar Unless Otherwise Noted. Colors And Textures Will Vary.



NOTE:
 All Altered Electrical Circuits In All Electrical Power Outlets In Unfinished, Basement, Bathrooms And Kitchen Within 6'-0" Of Water Shall Be GFI Type Outlets. All Other Electrical Power Circuits Shall Be Upgraded To Standard Arch Fault Breaker Protection As Noted In Current Applicable Residential Building Code.

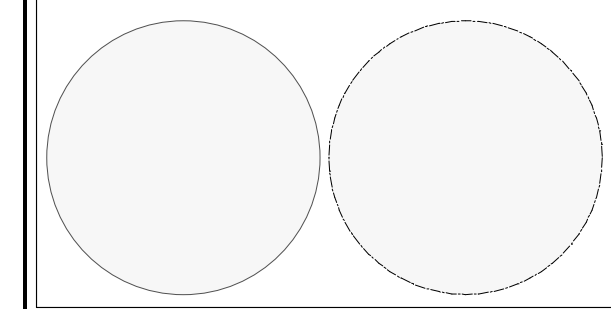
ENERGY CODE

- RECOMMENDED STANDARDS
- R-38 ATTICS
 - R-30 VAULTS
 - R-13 WALLS
 - R-8 DUCTWORK IN UNCONDITIONED SPACES
 - R-19 FLOORS OVER UNCONDITIONED SPACES
 - .40 U-VALUE WINDOWS

NOTE:
 All Materials, Roof Slopes Floor To Floor Heights, Total Elevation Height Are Similar Unless Otherwise Noted. Colors And Textures Will Vary.



This Drawing And Information Contained Within Is Provided As An Instrument Of Service By The Architect, And Is Intended For Use On This Project Only. This Drawing Remains The Property Of The Architect And Shall Be Returned To Him Upon Completion Of The Construction Work. All Drawings, Specifications, Ideas, Designs And Arrangements Appearing Herein Constitute The Original And Unpublished Work Of The Architect. Any Reproduction, Use Or Disclosure Of The Proprietary Information Contained Herein Without The Prior Written Consent Of The Architect Is Strictly Prohibited.
 © AGMP 2019



A-0

1	Date
2	REVISION
3	REVISION
4	REVISION
5	REVISION