

September 20, 2017

LEGAL DESCRIPTION
UTILITY EASEMENT VACATION
PART OF LOTS 17 & 18, I-470 BUSINESS AND TECHNOLOGY CENTER
CITY OF LEE'S SUMMIT, JACKSON COUNTY, MISSOURI

A strip of land 15 feet in width across part of Lots 17 and 18, I-470 BUSINESS AND TECHNOLOGY CENTER, a subdivision of land in the City of Lee's Summit, Jackson County, Missouri, lying 7.5 feet each side of the following described centerline:

Commencing at the Southwest corner of said Lot 18; thence S 83° 14' 56" E, along the South line of said Lot 18, a distance of 45.00 feet, to a point on the East line of an existing platted 45' utility easement; thence N 6° 45' 04" E, along said East line, a distance of 21.94 feet, to the Point of Beginning of subject tract; thence S 82° 59' 57" E, a distance of 101.00 feet, to a point of termination;

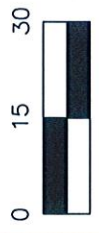
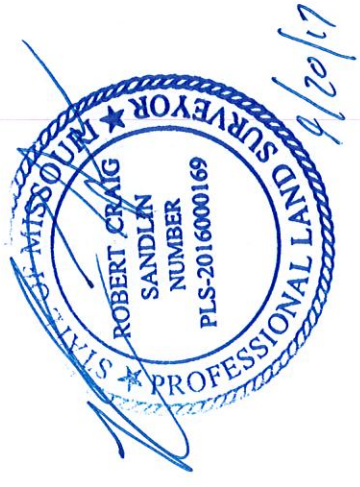
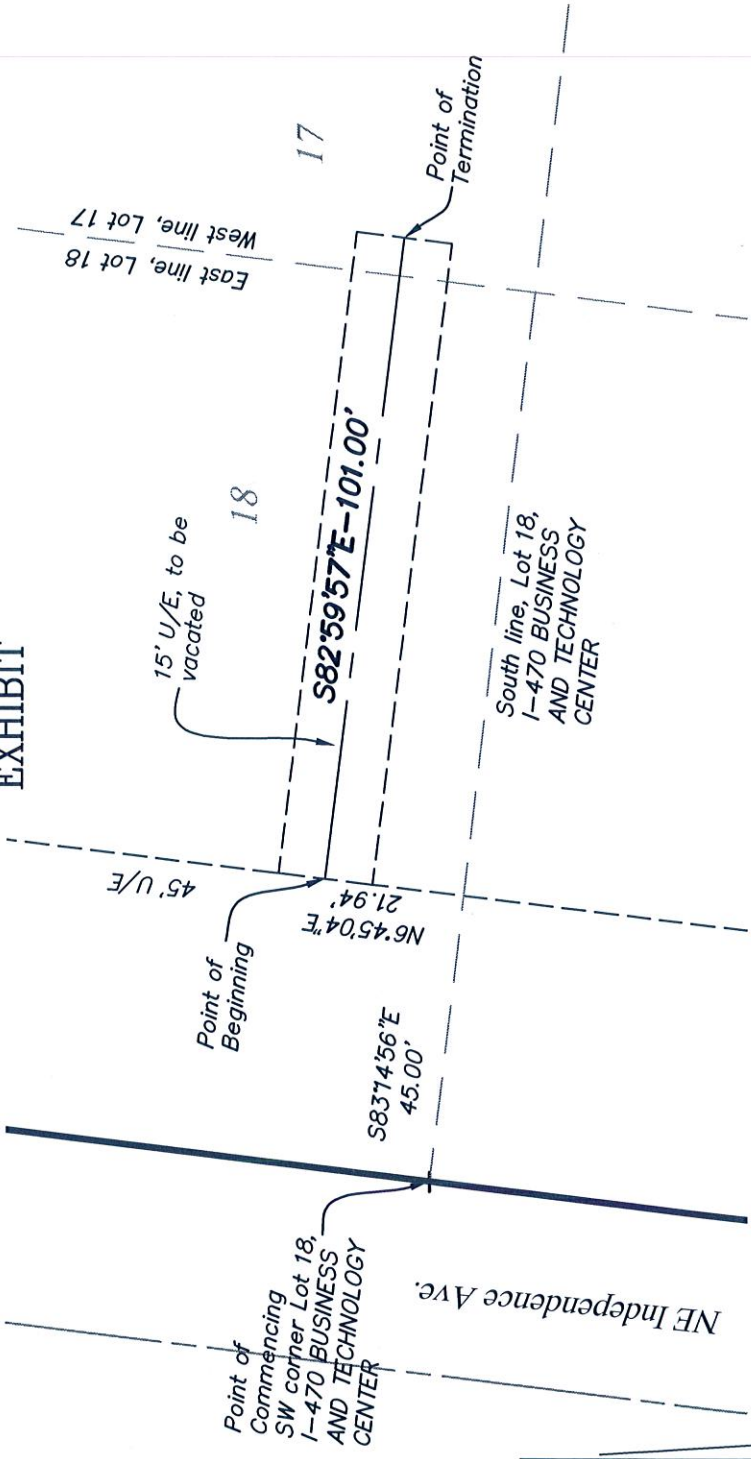
The above described tract contains 1,515 Sq. Ft. or .035 acres more or less.



SHAHER, KLINE & WARREN, INC.
11250 Corporate Avenue
Lenexa, Kansas 66219
Phone: (913) 888-7800
Fax: (913) 888-7868

SEP 22 2017
RECEIVED

EXHIBIT



SKW

SHAFER, KLINE & WARREN
 11250 Corporate Avenue
 Lenexa, KS 66219-1392
 913.888.7800 FAX: 913.888.7868

SURVEYING | ENGINEERING | CONSTRUCTION

PROJECT NO. 170534-010 | DATE: 9/2/17 | BY: RCS