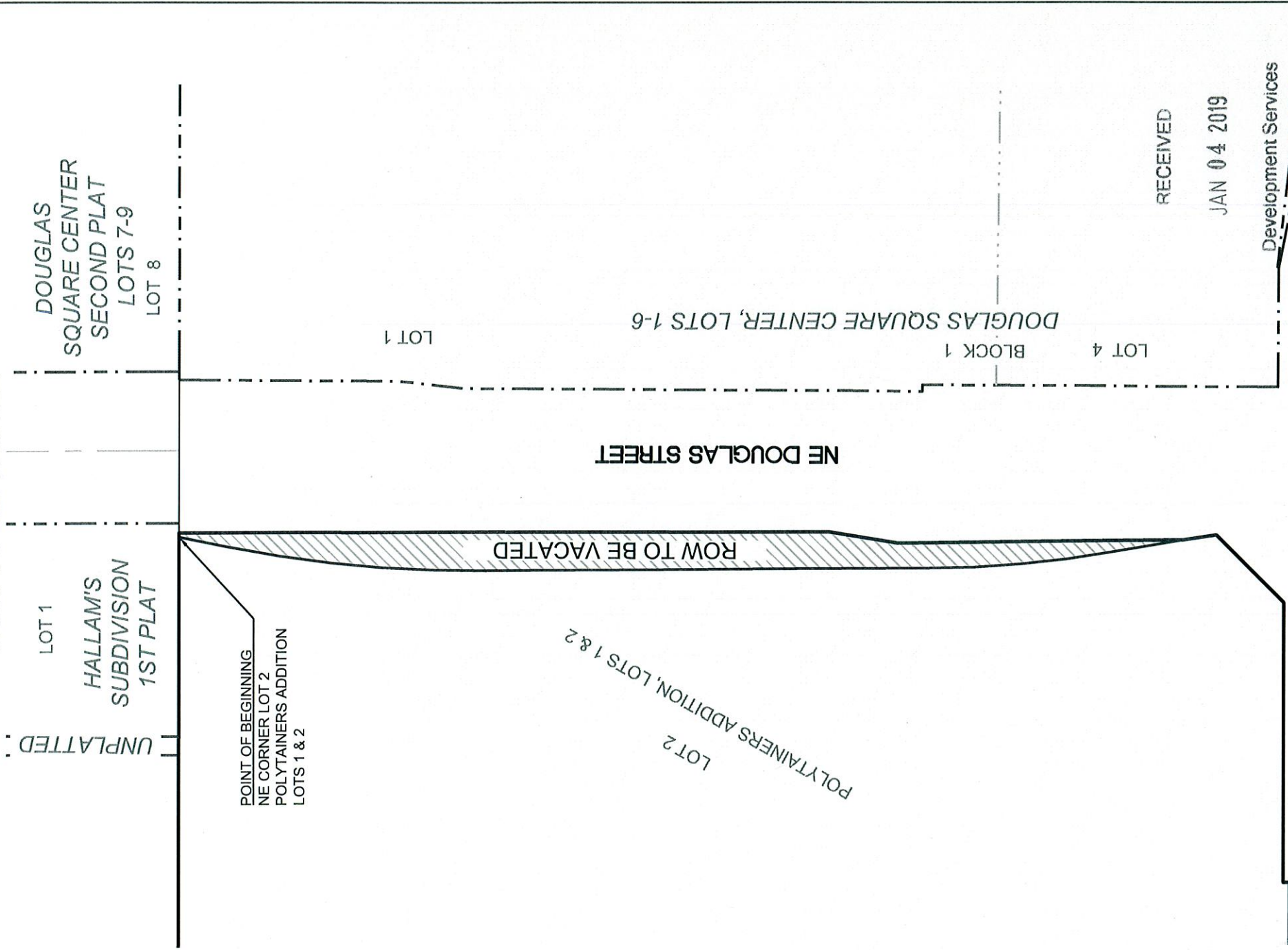


EXHIBIT "A"
ROW TO BE VACTED



NE VICTORIA DRIVE



2018-102-

DRAWN BY:	JWT
CHECKED BY:	AR
DATE:	12-20-2019
PROJECT NO:	17-135
SCALE:	1" = 100'
SHEET	1 OF 1



SCHLAGEL & ASSOCIATES, P.A.
 Engineers • Planners • Surveyors • Landscape Architects
 14920 West 107th Street • Lenexa, Kansas 66215
 www.schlagelassociates.com • (913) 492-5158 • Fax: (913) 492-8400
 Missouri State Certificates of Authority
 #E2002003800-F #LAC2001005237 #LS2002008859-F

ROW VACATE - EXHIBIT

DESCRIPTION:

All that part of the Northeast One-Quarter of Section 31, Township 48, Range 31, in the City of Lee's Summit, Jackson County, Missouri, being more particularly described as follows:

Beginning at the Northeast corner of Lot 2, POLYTAINERS ADDITION LOTS 1 & 2, a minor subdivision in the City of Lee's Summit, recorded as document 2016E0023636, Jackson County, Missouri; thence South 89 degrees 56 minutes 58 seconds East along the North line of said Northeast One-Quarter, a distance of 3.34 feet; thence South 00 degrees 03 minutes 20 seconds West a distance of 498.21 feet; thence South 09 degrees 15 minutes 24 seconds West a distance of 52.60 feet; thence South 00 degrees 35 minutes 03 seconds East a distance of 218.11 feet to a point on the East line of said Lot 2; thence along the East line of said Lot 2 for the following five courses, North 09 degrees 36 minutes 25 seconds West a distance of 56.00 feet to a point of curvature; thence Northerly on a curve to the right having an initial tangent bearing of North 09 degrees 35 minutes 01 seconds West, a radius of 858.51 feet, a central angle of 09 degrees 18 minutes 15 seconds and an arc length of 139.41 feet; thence North 00 degrees 15 minutes 45 seconds West a distance of 338.93 feet to a point of curvature; thence Northeasterly on a curve to the right having an initial tangent bearing of North 00 degrees 18 minutes 32 seconds West, a radius of 994.93 feet, a central angle of 11 degrees 25 minutes 52 seconds and an arc length of 198.50 feet; thence North 11 degrees 15 minutes 27 seconds East a distance of 38.81 feet to the Point of Beginning and containing 0.3803 acres more or less.