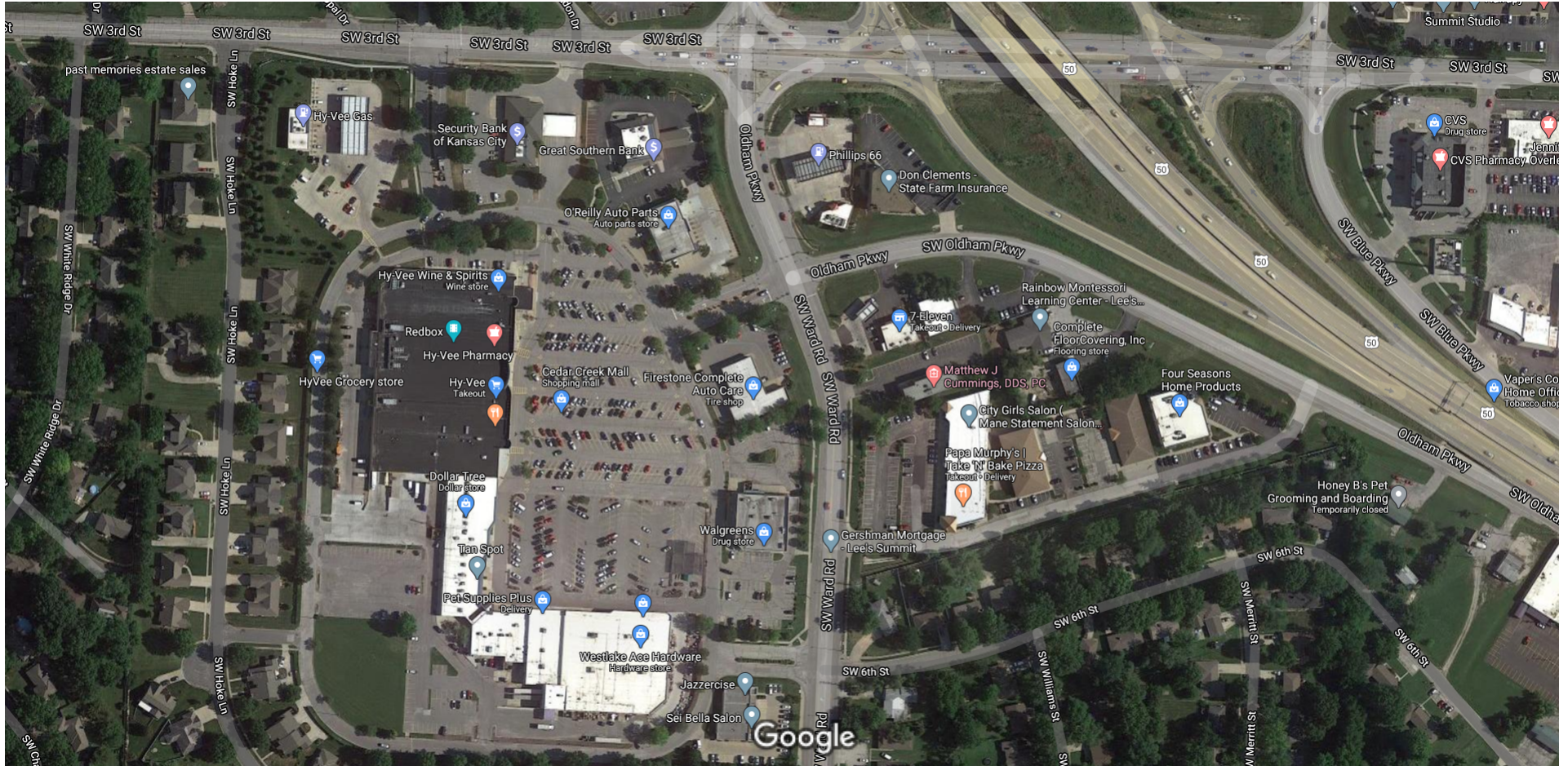


CADENCE

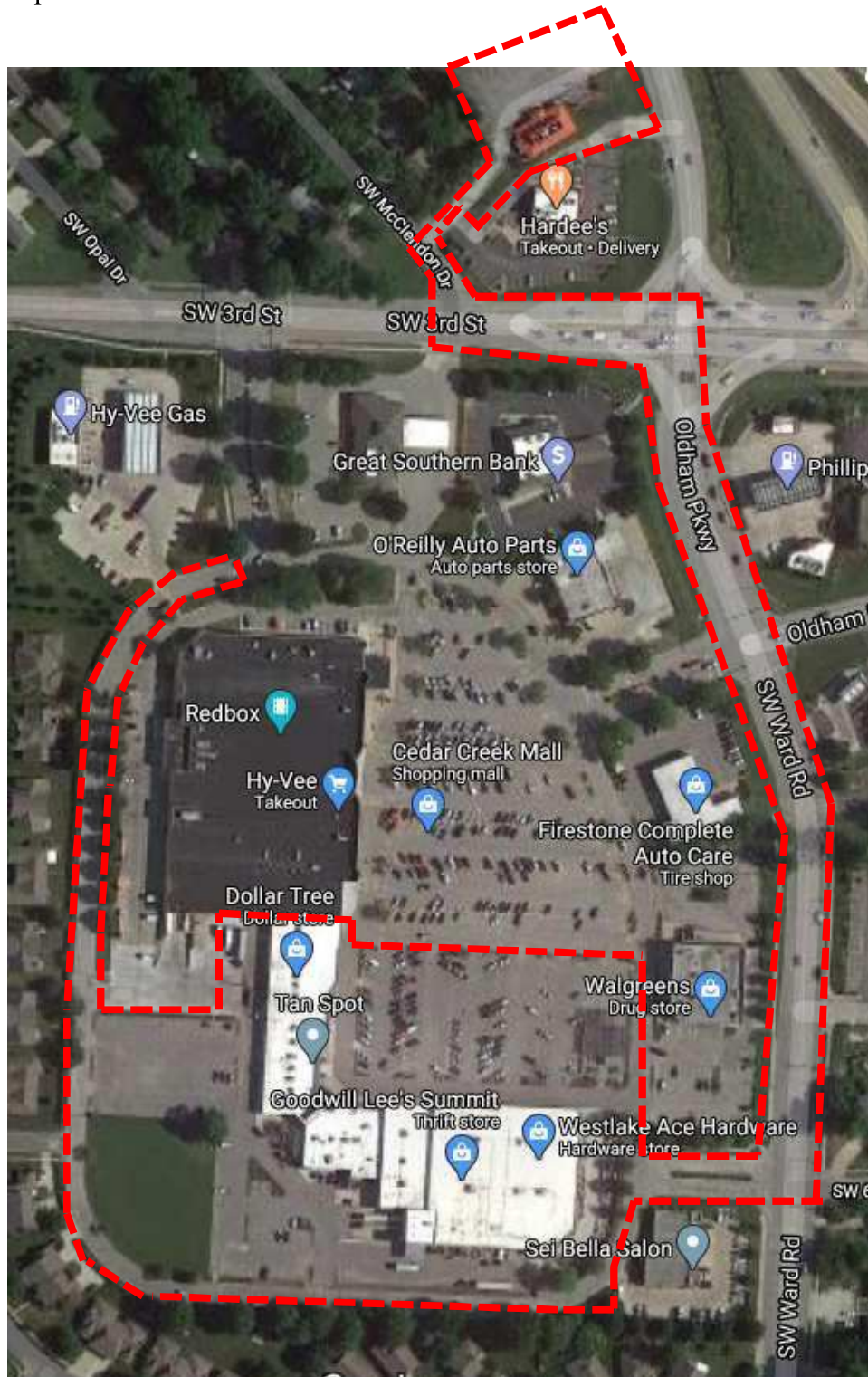
Lee's Summit, Missouri



Imagery ©2020 Maxar Technologies, Map data ©2020 100 ft



Boundary Map:



Cementitious Panel -
Beige

Existing Brick Restained

EIFS - White

Metal Canopy with
Wood-look Panel Soffit



Cedar Creek | Exterior Perspective

LEE'S SUMMIT, MISSOURI

DESIGN REPRESENTATION ONLY - NOT FOR CONSTRUCTION
The building images shown are a representation of the current design intent only. The building images may not reflect variations in color, tone, hue, tint, shading, ambient light intensity, materials, texture, contrast, font style, construction variations required by building codes or inspectors, material availability or final design detailing.



Cedar Creek | Exterior Perspective

LEE'S SUMMIT, MISSOURI

DESIGN REPRESENTATION ONLY - NOT FOR CONSTRUCTION
 The building images shown are a representation of the current design intent only. The building images may not reflect variations in color, tone, hue, tint, shading, ambient light intensity, materials, texture, contrast, font style, construction variations required by building codes or inspectors, material availability or final design detailing.



Cedar Creek | Exterior Perspective

LEE'S SUMMIT, MISSOURI

DESIGN REPRESENTATION ONLY - NOT FOR CONSTRUCTION
 The building images shown are a representation of the current design intent only. The building images may not reflect variations in color, tone, hue, tint, shading, ambient light intensity, materials, texture, contrast, font style, construction variations required by building codes or inspectors, material availability or final design detailing.

Full Size Brick - Burgundy

Cementitious Panel - Grey

Metal Canopy with Wood-look Panel Soffit

EIFS - White

Existing Brick Restained



Cedar Creek | Exterior Perspective

LEE'S SUMMIT, MISSOURI

DESIGN REPRESENTATION ONLY - NOT FOR CONSTRUCTION
 The building images shown are a representation of the current design intent only. The building images may not reflect variations in color, tone, hue, tint, shading, ambient light intensity, materials, texture, contrast, font style, construction variations required by building codes or inspectors, material availability or final design detailing.