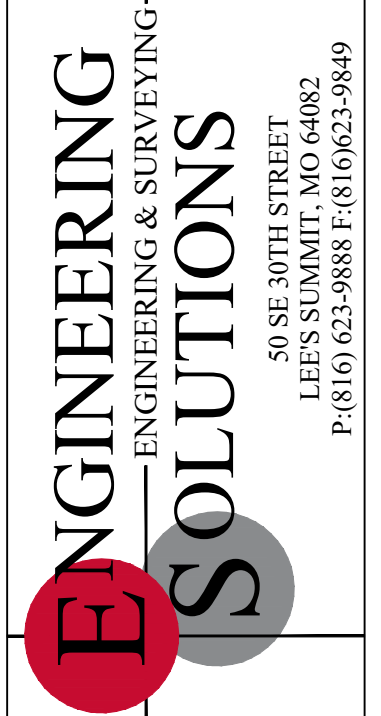
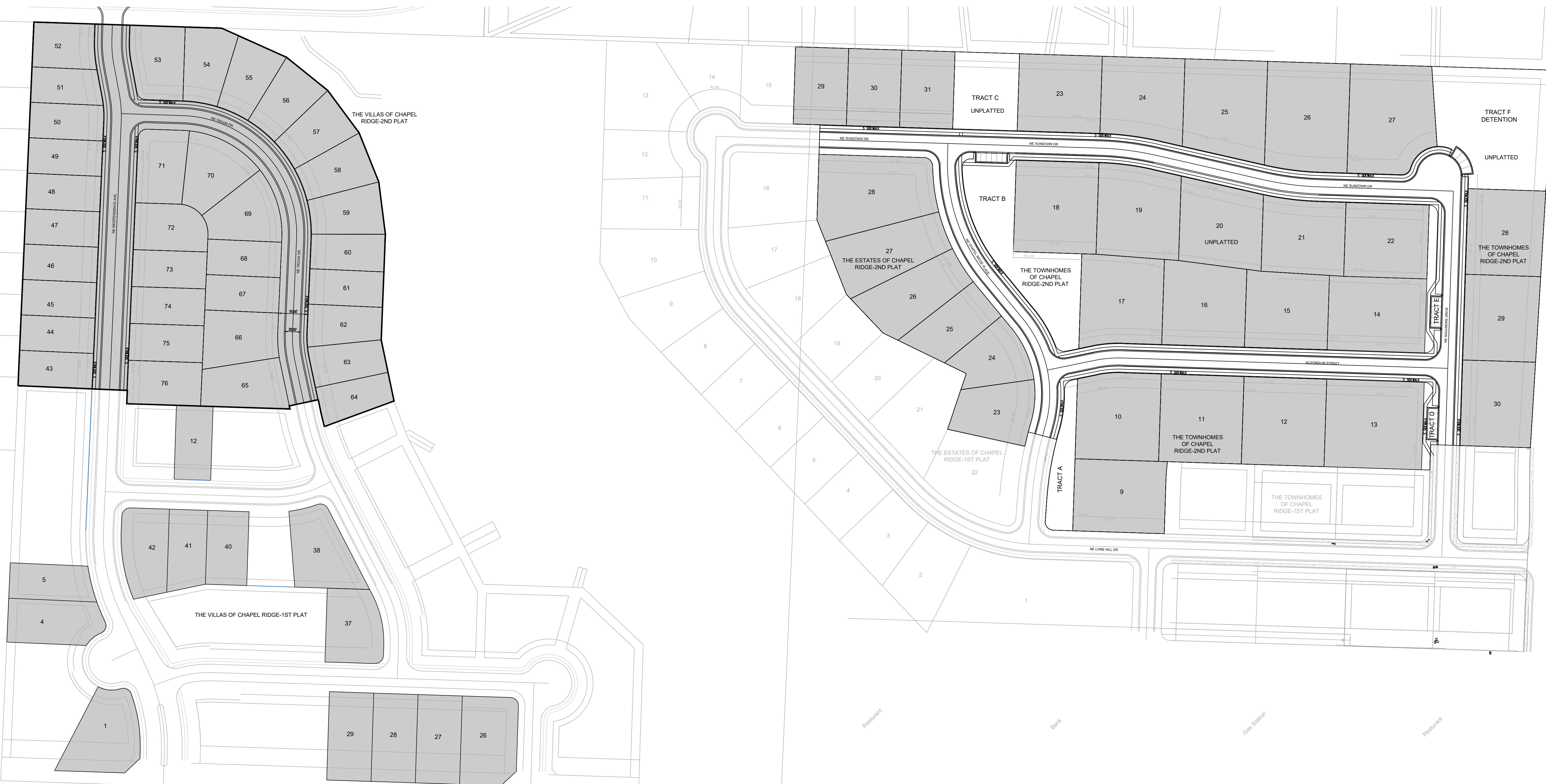
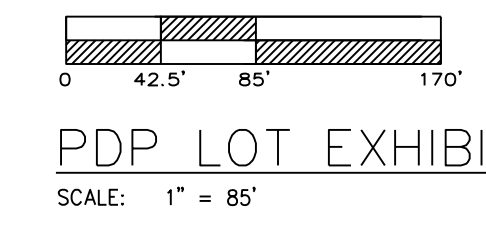
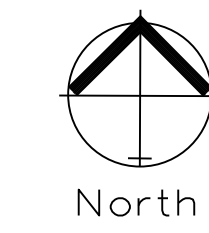


LOTS FOR SALE



Professional Registration  
Missouri  
Engineering 200502188-D  
Surveying 2005008319-D  
Kansas  
Engineering E-1695  
Surveying LS-218  
Oklahoma  
Engineering 6254  
Nebraska  
Engineering CA2821

Residential Subdivision  
LEE'S SUMMIT, JACKSON COUNTY, MISSOURI

Project: Villas at Chapel Ridge  
Issue Date: October 4, 2021

PDP Lot Exhibit  
Villas of Chapel Ridge  
Lee's Summit, Jackson County, Missouri

Matthew J. Schlicht  
MO PE 2006019708  
KS PE 19071  
OK PE 25226  
NE PE E-14335

REVISIONS
