



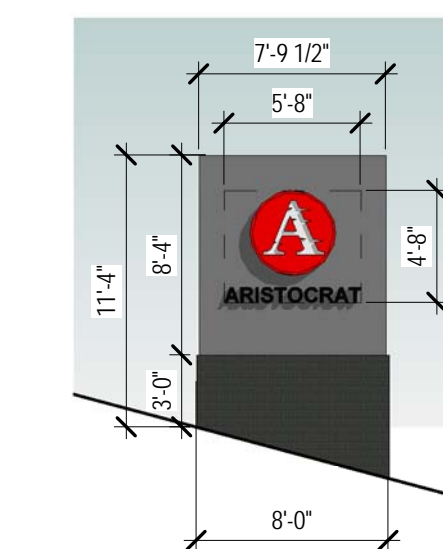


**MATERIALS**

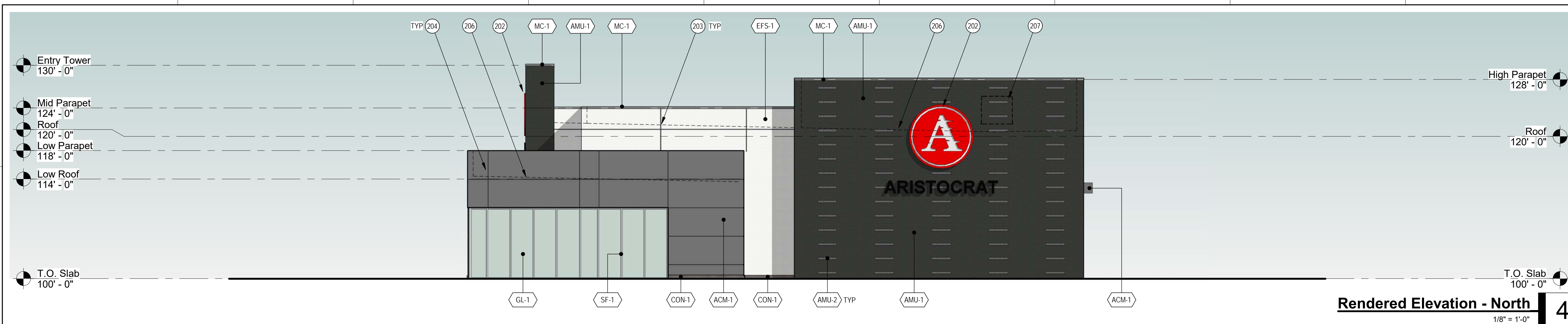
ACM-1	ALUMINUM WALL PANEL MANUFACTURER: ALPOLIC COLOR/FINISH: MICA MFS GREY
AMU-1	ARCHITECTURAL MASONRY UNIT 4 X 16 RUNNING BOND MANUFACTURER: YORK BUILDING PRODUCTS COLOR/FINISH: GEMSTONE - MNK (GLOSSY)
AMU-2	ARCHITECTURAL MASONRY UNIT 4 X 16 RUNNING BOND MANUFACTURER: YORK BUILDING PRODUCTS COLOR/FINISH: GEMSTONE - MNK (MATT)
CON-1	CAST IN PLACE CONCRETE WALL CURB COLOR/FINISH: TBD
ED-1	WIDES STILE ALUMINUM STOREFRONT DOOR MANUFACTURER: KAWNEER COLOR/FINISH: (MATCH SF-1 AND GL-1)
ED-2	FLUSH HOLLOW CORE STEEL DOOR W/ HIGH PERFORMANCE COATING COLOR/FINISH: TBD
ED-3	OVERHEAD GLASS AND ALUMINUM FRAME SECTIONAL DOOR MANUFACTURER: TBD COLOR/FINISH: (MATCH SF-1 AND GL-1)
EFS-1	EXTERIOR INSULATED FINISH SYSTEM (EIFS) MANUFACTURER: TBD COLOR/FINISH: FINE TEXTURE - 612 MOONLIGHT
GL-1	CLEAR INSULATED LOW-E GLAZING MANUFACTURER: AGC ENERGY SELECT 40
MC-1	PRE-FINISHED METAL COPING MFG. MANUFACTURER: BERRIDGE MFG. COLOR/FINISH: LEAD-COTE
SF-1	ALUMINUM STOREFRONT SYSTEM MANUFACTURER: KAWNEER COLOR/FINISH: CLEAR ANODIZED

**KEYNOTES**

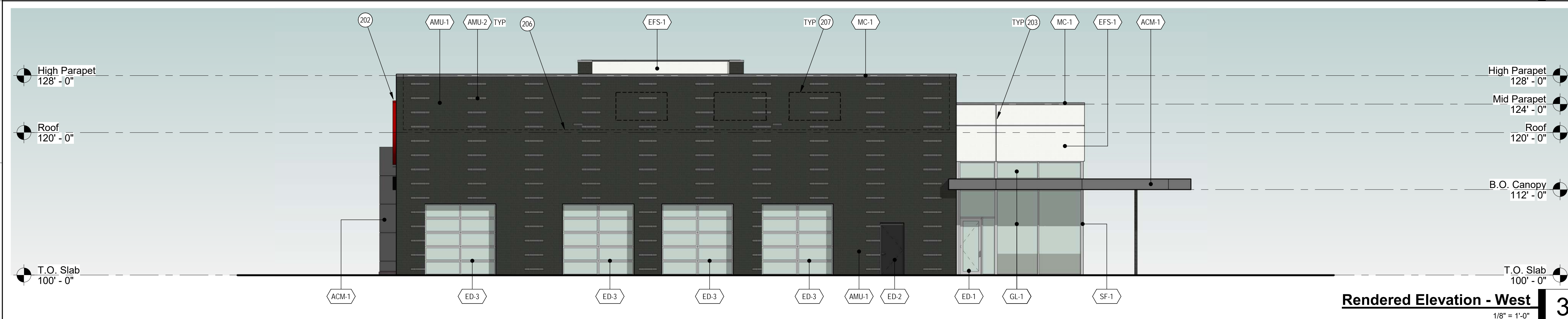
201	STRUCTURAL COLUMN WITH HIGH PERFORMANCE COATING COLOR/FINISH: TBD
202	WALL MOUNTED BUILDING SIGNAGE BY OWNER
203	EIFS V' GROOVE REVEAL
204	ACM JOINT / REVEAL
205	TRANSLUCENT FILM APPLIED TO LOWER PORTION OF GLAZING
206	LINE OF ROOF BEYOND PARAPET
207	ROOF TOP UNIT (RTU) BEYOND PARAPET



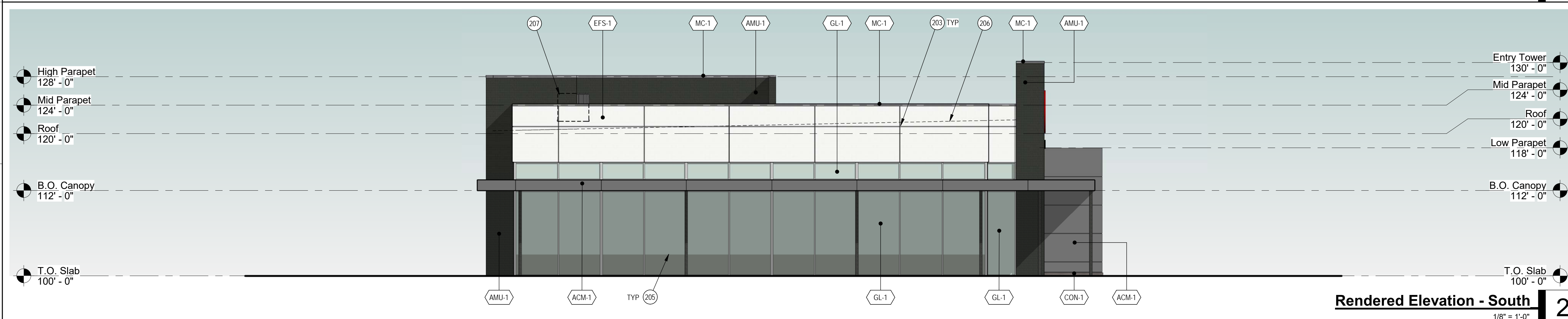
**Monument Sign**  
1/8" = 1'-0"



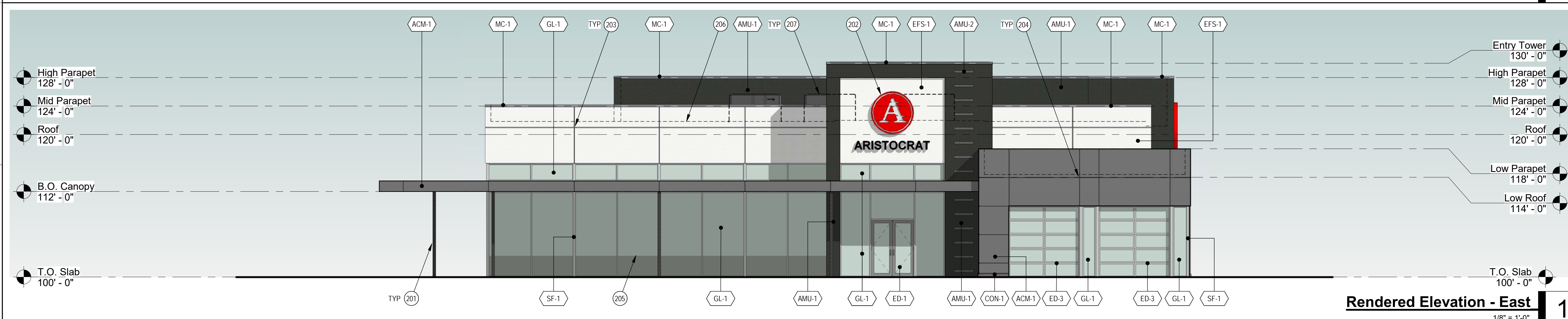
**Rendered Elevation - North** 4  
1/8" = 1'-0"



**Rendered Elevation - West** 3  
1/8" = 1'-0"



**Rendered Elevation - South** 2  
1/8" = 1'-0"



**Rendered Elevation - East** 1  
1/8" = 1'-0"

**Aristocrat Pre-Owned Sales Building**

New Construction  
 Soave Automotive Group  
 Lee's Summit, MO

Revisions:


Project #: 180508  
**Preliminary Development Plan Resubmittal**  
 07/15/2019

