

Jim Thomas
Partner, Cityscape Residential

Ryan Adams
Associate, Cityscape Residential

Cityscape Residential

- **Jim Thomas, Partner**
 - From KC originally (Raytown) and family still lives in Lee's Summit.
 - Prior apartment communities at Longview, Summit Ridge
 - Currently working on Meridian at View High Drive.
- **Ryan Adams, Associate**
 - Based in KC and responsible for implementation of several successful urban, infill communities

Cityscape Residential

- Communities in KC area
 - Residences at Prairiefire
 - West End Flats at Prairiefire
 - Greenwood Reserve (Olathe)
 - Apex on Quality Hill
 - Summit on Quality Hill
 - Crossroads Westside
 - Village at View High

Residences at Prairiefire Overland Park

Residences at Prairiefire



Residences at Prairiefire



Residences at Prairiefire



Residences at Prairiefire



Greenwood Reserve

Olathe

Greenwood Reserve - Olathe



Greenwood Reserve - Olathe



Greenwood Reserve - Olathe



Greenwood Reserve - Olathe



Summit on Quality Hill

Kansas City, MO

Summit on Quality Hill



Summit on Quality Hill



Apex on Quality Hill

Kansas City, MO

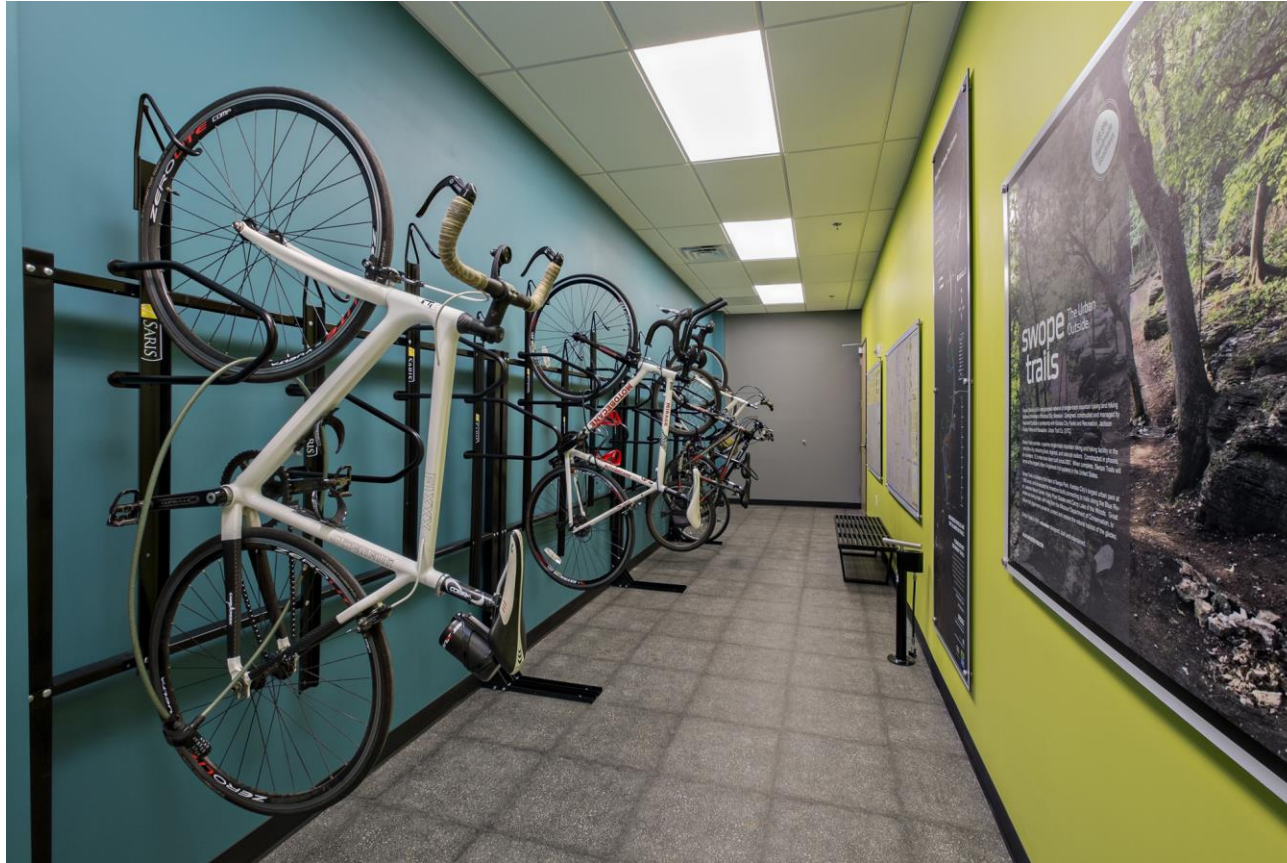
Apex on Quality Hill



Apex on Quality Hill



Apex on Quality Hill



Crossroads Westside

Kansas City, MO

Crossroads Westside



Crossroads Westside



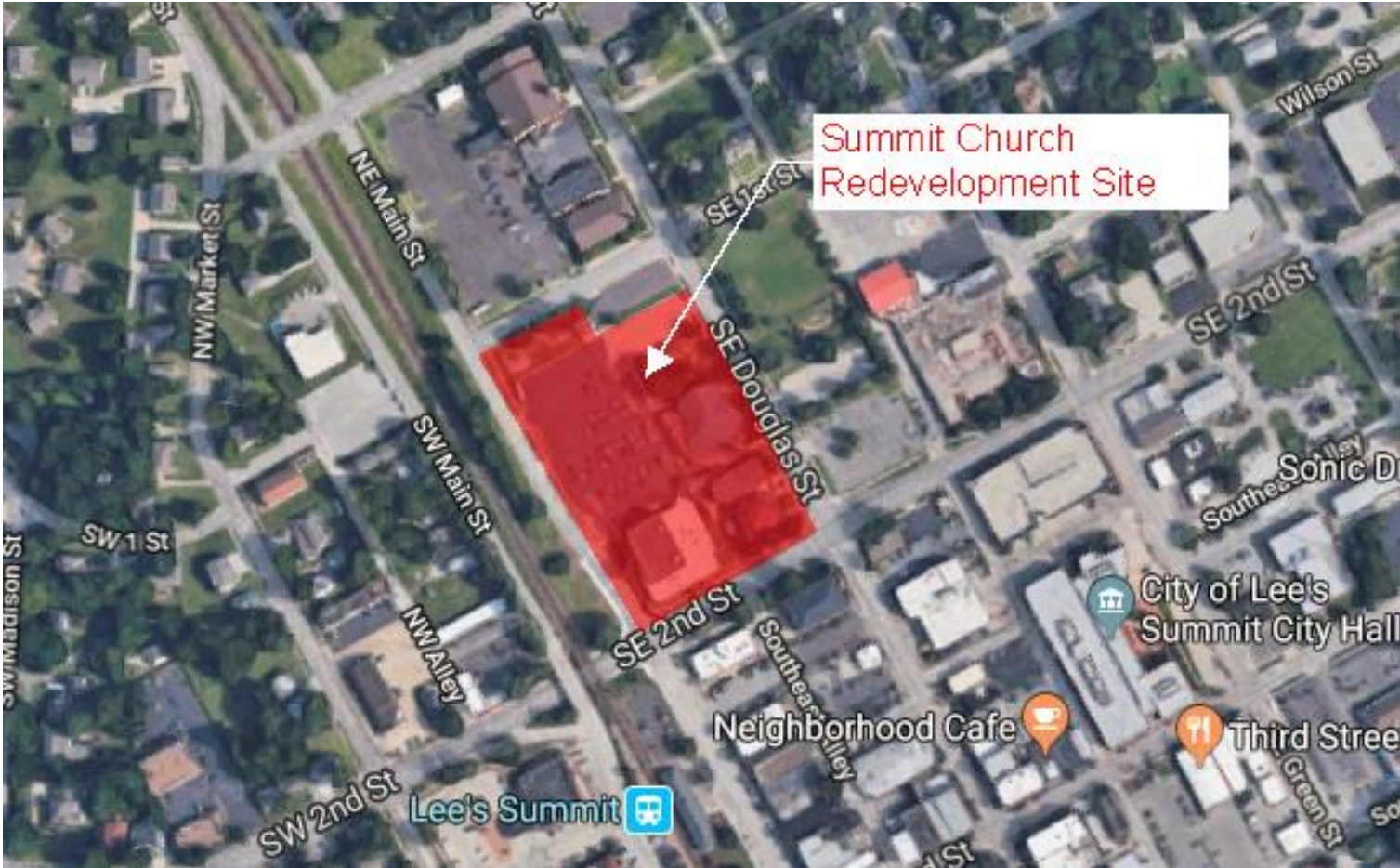
Summit Church Redevelopment

Lee's Summit

Summit Church Redevelopment



Summit Church Redevelopment



Summit Church Redevelopment



Summit Church Redevelopment



Summit Church Redevelopment



- Project Overview
 - Unit count, amenities, parking garage
- Project Challenges
 - Balancing needs of Downtown housing with zoning requirements (parking)
 - Capacity of existing sewer system

Summit Church Redevelopment



South Elevation Looking North

Summit Church Redevelopment



East Elevation Looking West

Summit Church Redevelopment





Cityscape

Residential

WWW.CITYSCAPERESIDENTIAL.COM