



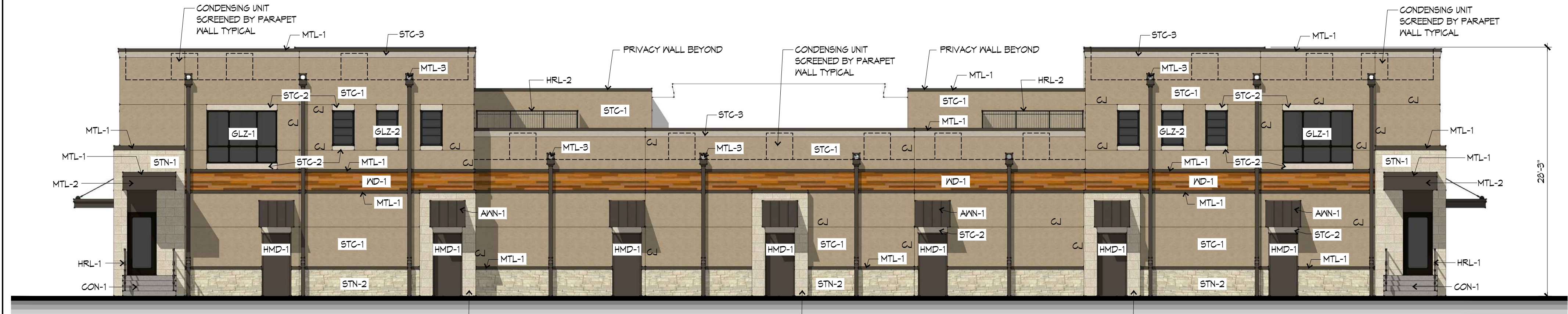
1 WEST RENDERING



2 WEST ELEVATION
1/8"=1'-0"



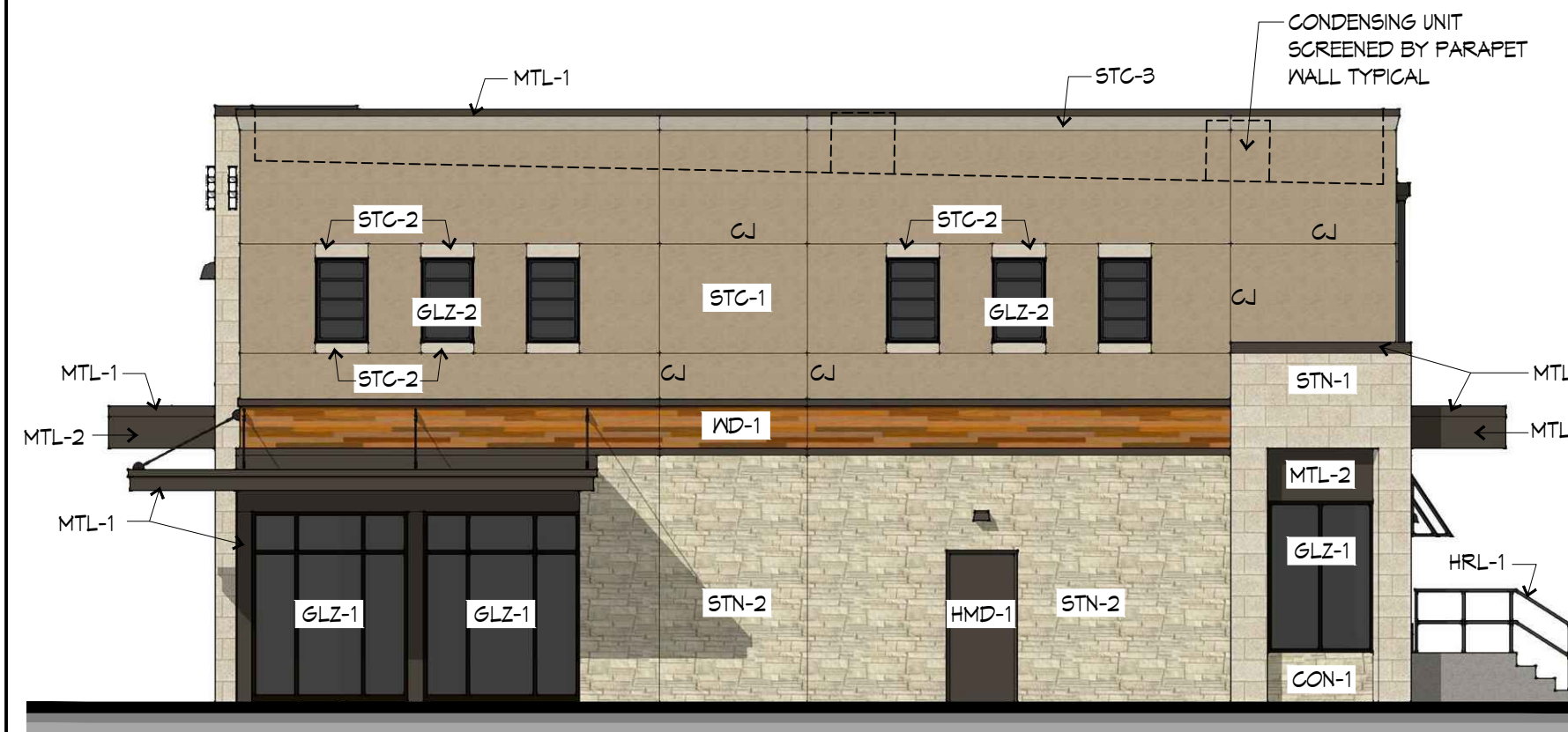
3 EAST RENDERING



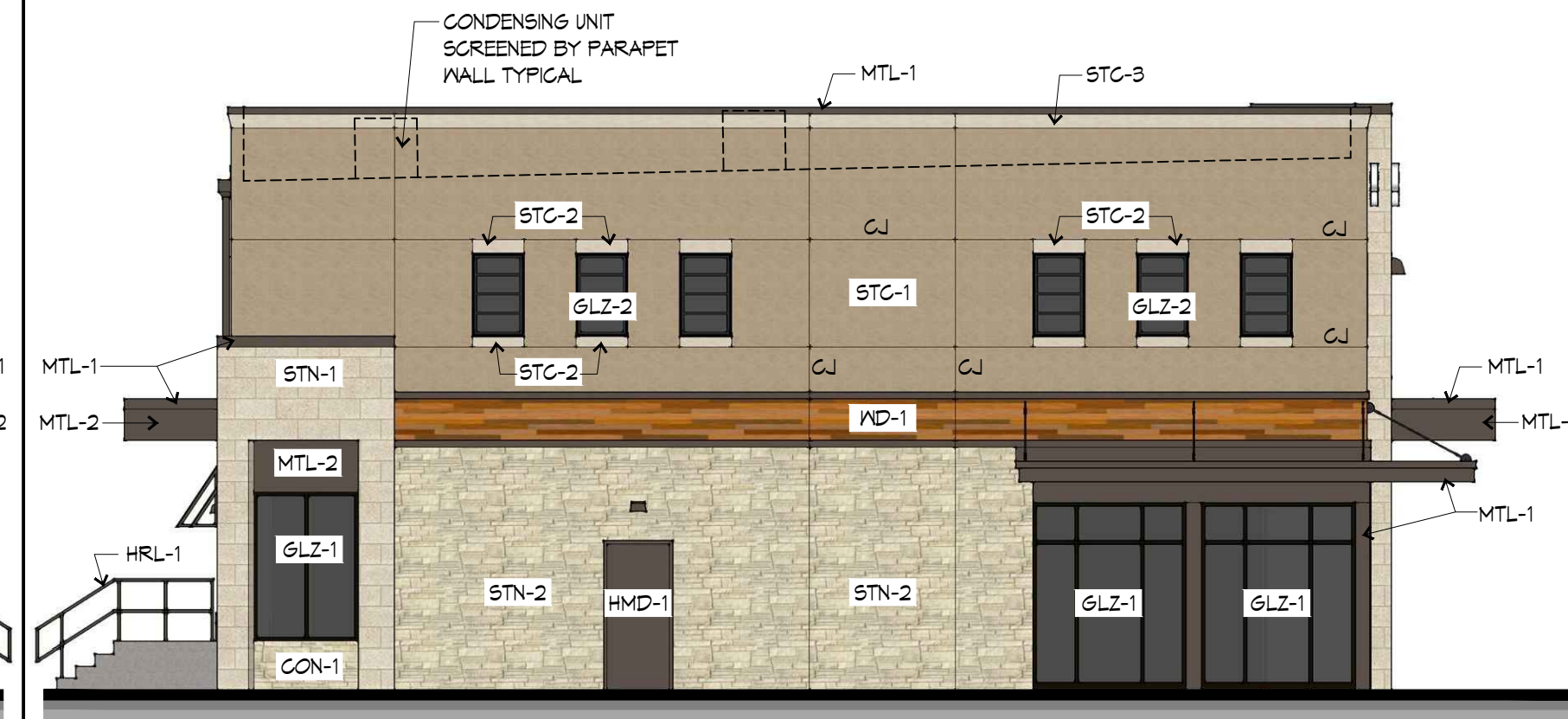
4 EAST ELEVATION
1/8"=1'-0"



5 SOUTH RENDERING



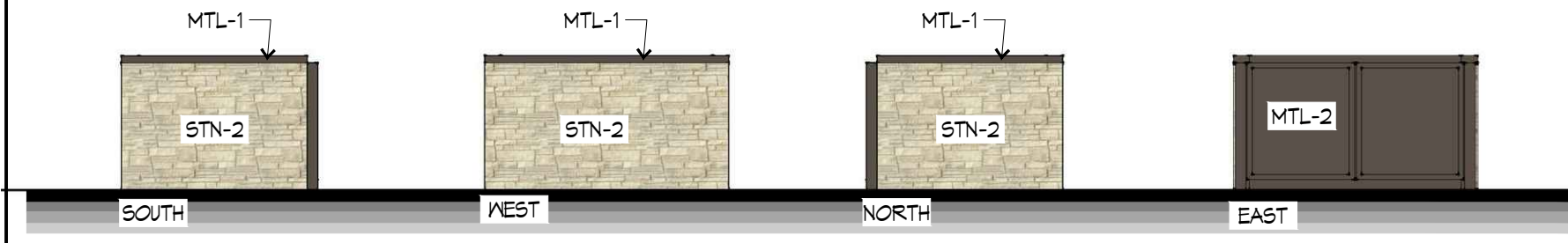
6 SOUTH ELEVATION
1/8"=1'-0"



7 NORTH ELEVATION
1/8"=1'-0"



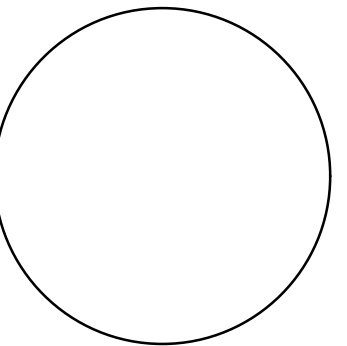
8 NORTH RENDERING



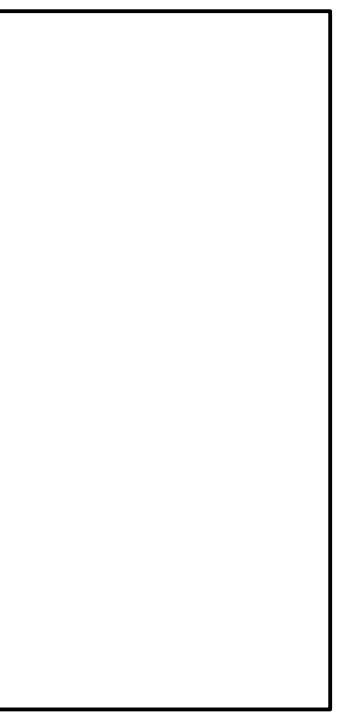
9 TRASH ENCLOSURE ELEVATIONS
1/8"=1'-0"

EXTERIOR MATERIAL LEGEND

- STN-1 MANUFACTURED THINSTONE VENEER: 12" H x 24" W x 1" DP SMOOTH FACE THINSTONE VENEER. (COLOR = LIMESTONE)
- STN-2 MANUFACTURED THINSTONE VENEER: STONE SPLIT RUBBLE PATTERN. (COLOR = LIMESTONE)
- STC-1 CEMENTITIOUS STUCCO SYSTEM (COLOR = LIGHT TAN)
- STC-2 CEMENTITIOUS STUCCO SYSTEM (COLOR = BEIGE)
- STC-3 CEMENTITIOUS STUCCO SYSTEM WITH PROJECTED FOAM CROWN SHAPE (COLOR = OFF WHITE)
- CJ STUCCO CONTROL JOINT.
- MTL-1 BREAK METAL FLASHING (COLOR = DARK BROWN)
- MTL-2 FLUSH CONCEALED FASTNER METAL WALL PANEL (COLOR = DARK BROWN)
- MTL-3 THROUGH WALL SQUIPPER, SQUIPPER HEAD, DOWNSPOUT AND DOWNSPOUT LEADER (COLOR = DARK BROWN)
- AVN-1 STANDING SEAM BREAK METAL AVNING (COLOR = DARK BROWN)
- GLZ-1 ALUMINUM STOREFRONT AND ENTRY SYSTEM (COLOR = BLACK ANODIZED) WITH DOUBLE PANE INSULATED GLASS (COLOR = GRAY TINT)
- GLZ-2 WOOD CASEMENT WINDOW WITH EXTERIOR ALUMINUM GLADDING AND 1" GRILLS. (COLOR = BLACK) WITH DOUBLE PANE INSULATED GLASS (COLOR = GRAY TINT)
- HMD-1 HOLLOW METAL DOOR AND FRAME. PAINT (COLOR = DARK BROWN TO MATCH MTL-1)
- MDT-1 EXTERIOR PORCELAIN TILE (COLOR = WARM WOOD)
- HRL-1 1/2" DIA GLAZANIZED STEEL HANDRAIL - PAINT. (COLOR = DARK BROWN TO MATCH MTL-1)
- HRL-2 PREFINISHED ALUMINUM RAILING SYSTEM (COLOR = DARK BROWN TO MATCH MTL-1)
- CON-1 CONCRETE STAIR (COLOR = NATURAL)
- SGN-1 WALL SIGN. TO BE SUBMITTED UNDER SEPARATE SIGN PERMIT



GUY GRONBERG ARCHITECTS, P.C.
 113 S. SUMMIT, SUITE 404
 LEES SUMMIT, MO 64063
 Phone: 816.524.0870
 Fax: 816.524.0570



DOUGLAS CORNER
 LOT 1B, LEES SUMMIT, MISSOURI 64086

This drawing has been prepared as an instrument of service for the project or use on this project only. It is not to be used for any other project without the written consent of Guy Gronberg Architects, P.C. The original copy of this drawing is the property of Guy Gronberg Architects, P.C. and shall remain confidential. © 2010 GUY GRONBERG ARCHITECTS, P.C.

REV#	DATE	DESCRIPTION
1	8/7/10	PLANNING COMMENTS

DATE: 06-26-2010
PROJECT# 18001

