

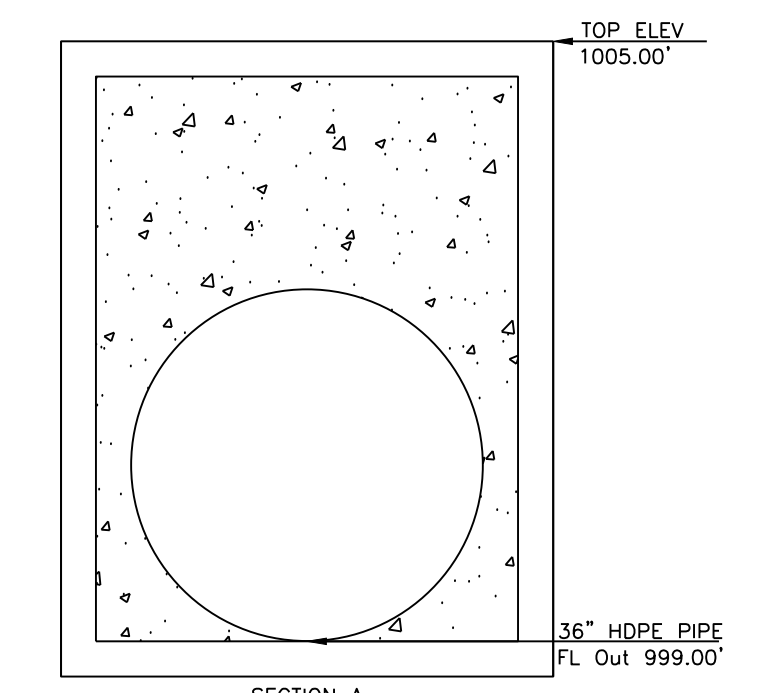
UTILITY PLAN
SCALE: 1" = 50'

NOTE
ALL INTERIOR STORM LINES ARE PRIVATE.

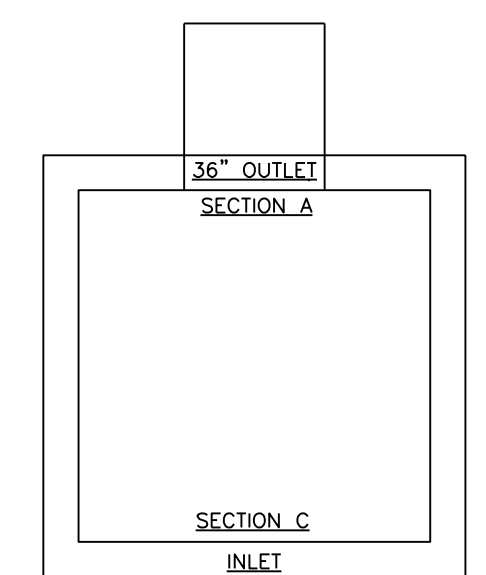
OWNER:
GILLESPIE KENNETH W & MARIJA N
2124 SE 6TH ST
LEES SUMMIT, MO 64063
70-400-04-03-02-1-00-000

SANITARY MANHOLE TABLE						
MH ID	TOP	PIPE LENGTH	SLOPE	FL IN	FL OUT	PIPE SIZE
A-1	1012	160	0	1000.26	1000.00	8" PVC
A-2	1008.50	230	0.60%	1001.45	1001.25	8" PVC
A-3	1007.00	70	0.60%	1002.07	1001.87	8" PVC
A-4	1008.50	70	0.60%	N/A	1002.50	8" PVC
B-1	1019.50	320	2.00%	1008.50	1008.00	8" PVC
B-2	1020.75	205	1.00%	1010.75	1010.55	8" PVC
B-3	1023.00	155	1.00%	N/A	1012.30	8" PVC
C-1	1020.50	25	1.00%	N/A	1008.75	8" PVC

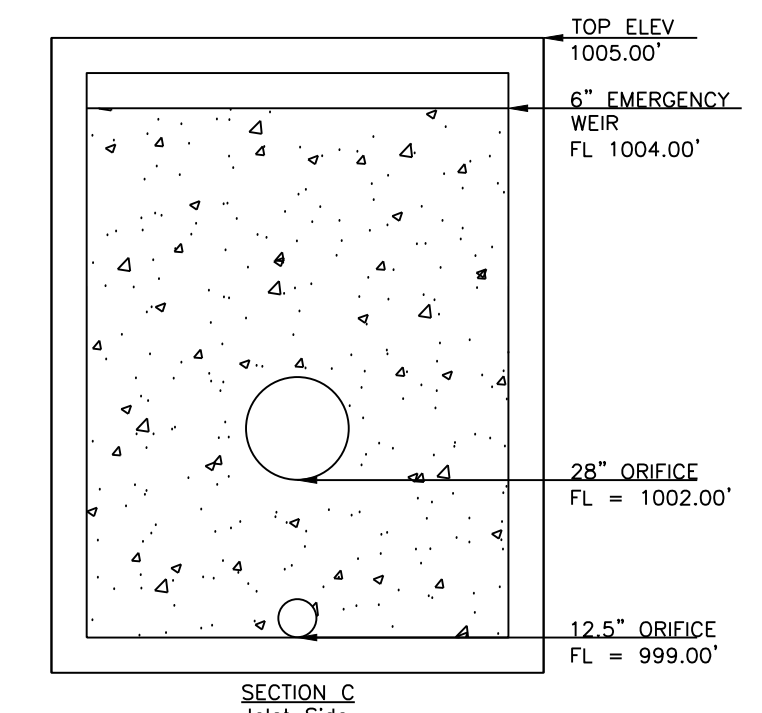
STORM SEWER TABLE						
ID	TOP	PIPE LENGTH	SLOPE	FL IN	FL OUT	PIPE SIZE
FES 1-1		55	0.60%		996.50	36" HDPE
CI 1-2	1000.75	38	0.60%	997.18	996.83	36" HDPE
CI 1-3	1000.75	26	0.60%	997.59	997.33	36" HDPE
CI 1-4	1005.50	15	0.60%	997.93	997.68	36" HDPE
CI 1-5	1003.00	65	0.60%	998.57	998.32	36" HDPE
FI 1-6	1005.00	65	0.60%	N/A	999.00	36" HDPE
CI 2-1	1000.75	65	0.60%	997.82	997.57	24" HDPE
CI 2-2	1004.50	95.00	0.60%	998.64	998.39	24" HDPE
CI 2-3	1008.25	80	5.10%	1003.00	1002.75	18" HDPE
CI 2-4	1008.25	38	0.60%	1003.65	1003.40	18" HDPE
CI 2-5	1008.50	35	0.60%	N/A	1004.00	15" HDPE
CI 3-1	1004.50	38	0.60%	N/A	998.84	15" HDPE
CI 4-1	1000.75	38	0.60%	998.30	998.05	18" HDPE
CI 4-2	1005.00	35	0.60%	N/A	998.50	15" HDPE
CI 5-1	1003.00	55	0.60%	N/A	998.87	15" HDPE
CI 6-1	1007	130	3.90%	N/A	1003.00	15" HDPE
FES 7-1		170	0.60%	N/A	1003.00	30" HDPE
CI 7-2	1010.50	75	0.60%	1003.70	1003.45	30" HDPE
CI 7-3	1017.00	75	8.10%	1010.00	1009.75	24" HDPE
CI 7-4	1017.00	30	0.60%	1010.40	1010.15	24" HDPE
CI 7-5	1018.50	95	0.60%	N/A	1011.15	15" HDPE
FES 8-1		60	0.60%	N/A	1003.00	48" HDPE
CI 8-2	1009.50	95	1.00%	1003.60	1003.35	48" HDPE
MH 8-3	1016.25	65	6	1008.00	1007.75	48" HDPE
CI 8-4	1017.50	80	0.60%	1008.75	1008.50	48" HDPE
CI 8-5	1016.75	70	0.60%	1009.35	1009.10	36" HDPE
CI 8-6	1018.00	70	0.60%	1009.95	1009.70	36" HDPE
CI 8-7	1022.00	95	4.43%	1014	1013.75	36" HDPE
CI 8-8	1021.75	105	0.60%	1010.70	1010.45	18" HDPE
CI 8-9	1022	30	0.60%	N/A	1010.85	15" HDPE
CI 9-1	1018.75	85	0.60%	N/A	1010.00	15" HDPE
CI 10-1	1022.00	30	0.60%	1014.40	1014.25	30" HDPE
CI 10-2	1024.50	85	1.00%	1015.50	1015.25	30" HDPE
CI 10-3	1028.00	90	2.00%	1017.55	1017.30	24" HDPE
CI 10-4	1031.50	120	2.00%	1020.20	1019.95	18" HDPE
CI 10-5	1031.50	125	2.00%	N/A	1022.95	15" HDPE
CI 11-1	1024.50	60	1.00%	1016.35	1016.10	30" HDPE
MH 11-2	1032.00	150	4.30%	1023.00	1022.75	30" HDPE
CI 11-3	1030.50	85	0.60%	1023.75	1023.50	24" HDPE
CI 11-4	1030.50	120	1.00%	N/A	1024.95	18" HDPE
CI 12-1	1016.50	85	1.00%	1011.50	1011.25	18" HDPE
CI 12-2	1018.50	75	1.00%	N/A	1012.25	15" HDPE



SECTION A
OUTLET SIDE
NOT TO SCALE

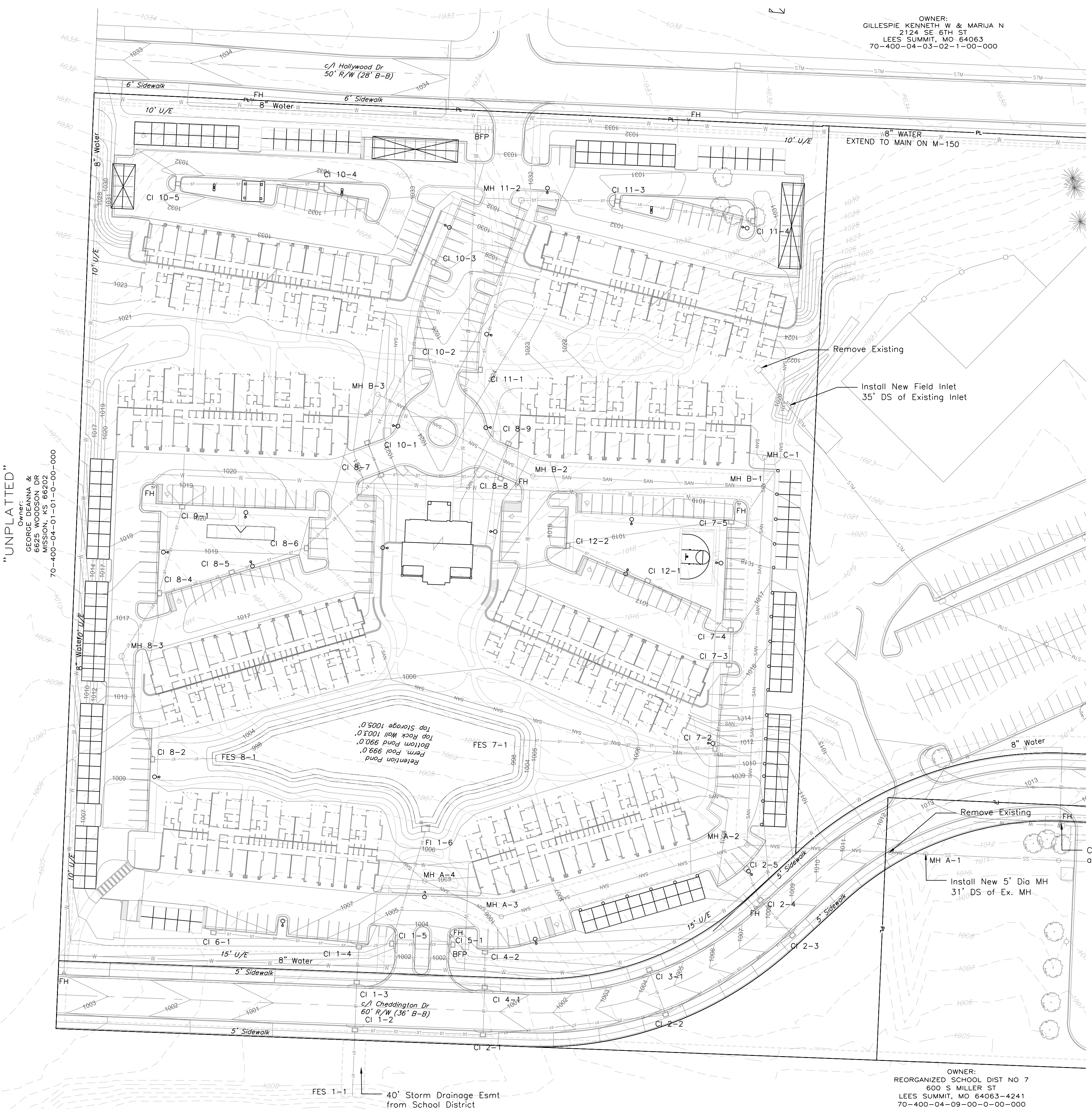


SECTION C
INLET



SECTION C
Inlet Side

PROPOSED RETENTION STRUCTURE ID 1-6



"UNPLATTED"
Owner:
GEORGE DEANNA &
MISSION, KS 66202
70-400-04-01-01-0-00-000

OWNER:
REORGANIZED SCHOOL DIST NO 7
600 S MILLER ST
LEES SUMMIT, MO 64083-4241
70-400-04-09-00-0-00-000

ENGINEERING SOLUTIONS
ENGINEERING & SURVEYING
50 SE 30TH STREET
LEES SUMMIT, MO 64082
P: (816) 623-9888 F: (816) 623-9849

Professional Registration
Missouri
Engineering 2005002188-D
Surveying 2005003819-D
Kansas
Engineering E-1695
Surveying LS-218
Oklahoma
Engineering 6254
Nebraska
Engineering CA2821

ALDRSGATE METHODIST CHURCH
Lee's Summit, Jackson County, Missouri

Project: ALDRSGATE METHODIST CHURCH
Issue Date: July, 2016

UTILITY PLAN
ALDRSGATE METHODIST CHURCH
Lee's Summit, Jackson County, Missouri

Matthew J. Schlicht
MO PE 2006019708
KS PE 19071
OK PE 25226

REVISIONS
