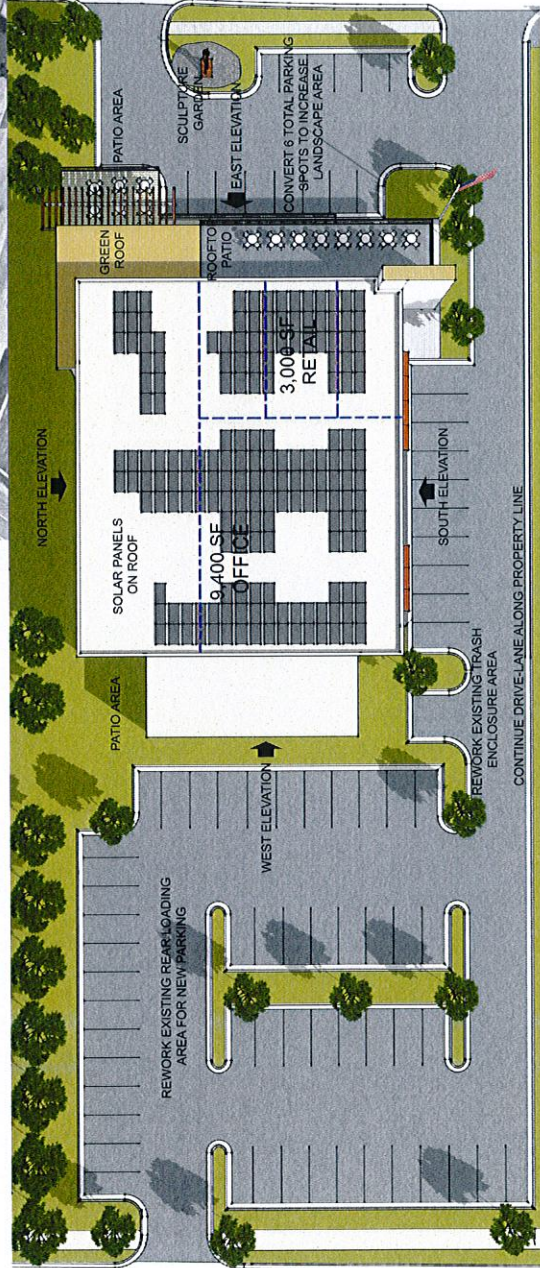
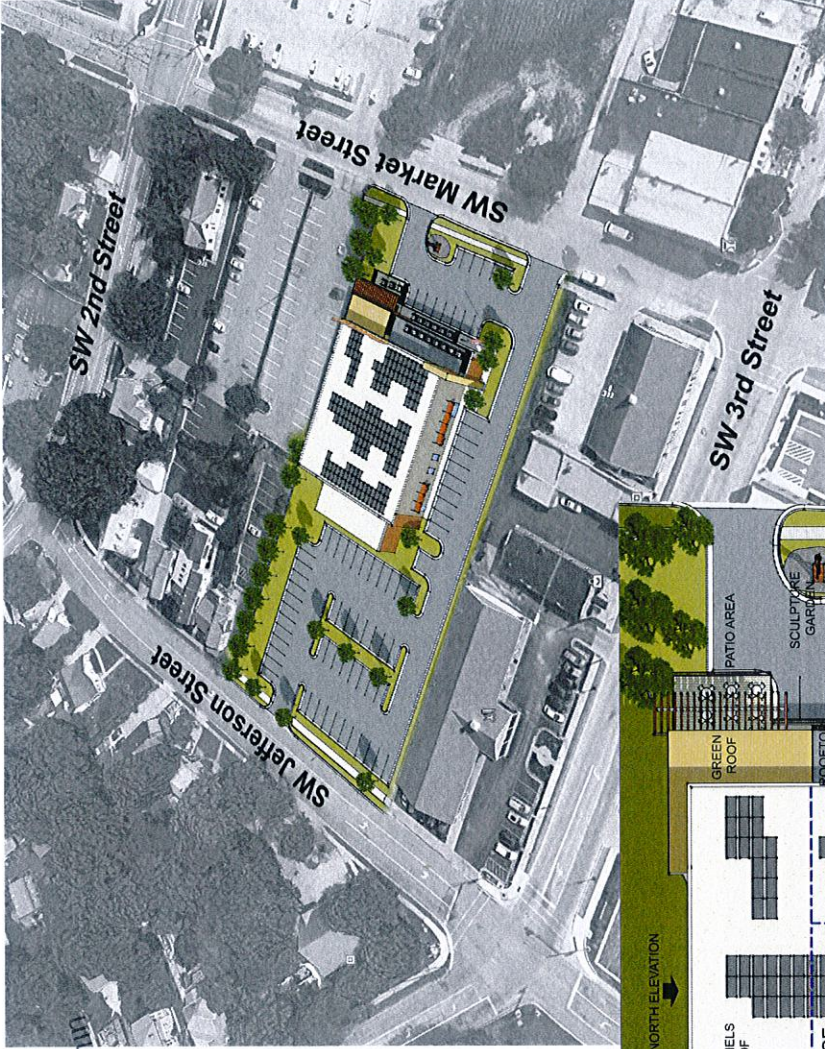


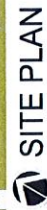
RECEIVED
 NOV - 7 2016
 Planning & Codes Admin



Project Description

Convert old Lee's Summit Post Office building to small Business / Retail. The site to be reworked for new parking, landscaping, and outdoor patio areas. Existing building elements to be kept and improved with paint, new windows, additional signage elements, green roof, solar panels, and outdoor patios. Refer to Building Elevations for extents of finishes.

Occupancy Type	Description
Retail	3,000 sf
Office	9,400 sf
Parking Spaces:	75



hollis miller architects

co-work
 LEE'S SUMMIT

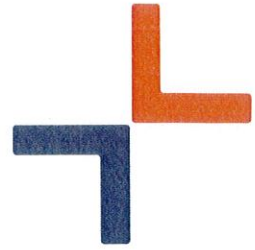


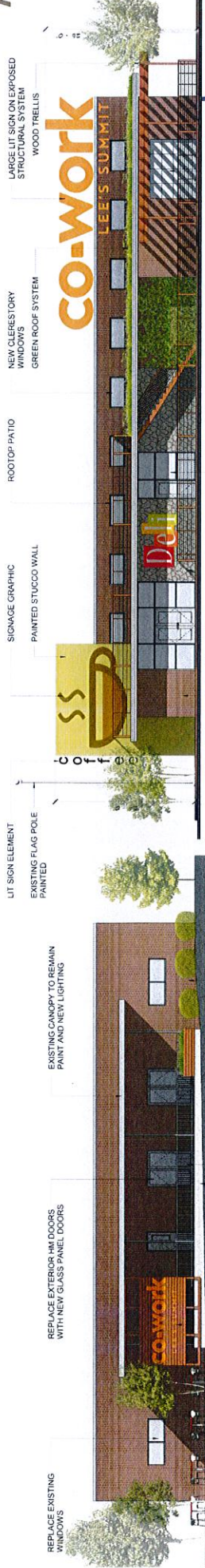
**INITIAL PHASE: SITE CONCEPT
 POST OFFICE REDEVELOPMENT**

co-work - Lee's Summit

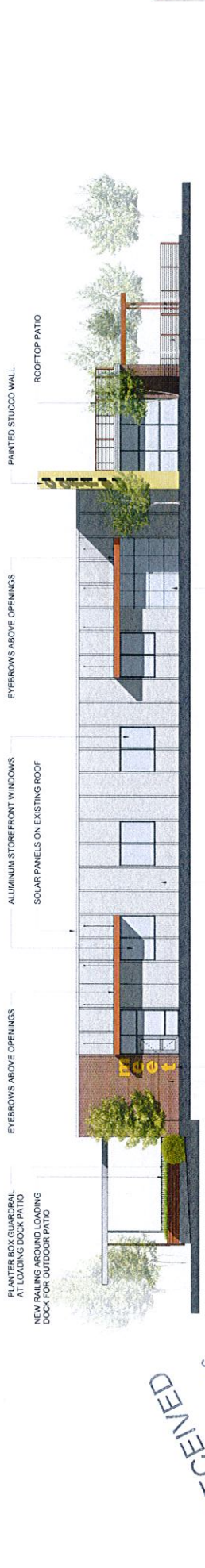
11.07.2016

-2016 - 199

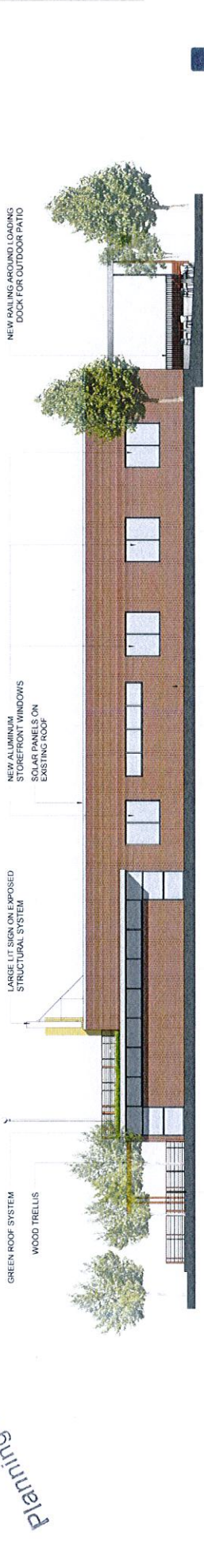




West Elevation (Rear)



East Elevation (Front)



South Elevation (Side)



North Elevation (Side)

INITIAL PHASE: BUILDING ELEVATIONS

CO-WORK - Lee's Summit 11.07.2016

-2016-199

CO-WORK
LEE'S SUMMIT

hollis miller architects

SD DD CD

RECEIVED
NOV - 7 2016
Planning & Codes Admin

