

# EXHIBIT "A"

## EASEMENT VACATION

**PART OF LOT 7D, LEMONE-SMITH BUSINESS & RAIL CENTER PLAT 6,  
IN THE CITY OF LEE'S SUMMIT, JACKSON COUNTY, MISSOURI**

### EASEMENT VACATION DESCRIPTION

ALL THAT PART OF LOT 7D, LEMONE-SMITH BUSINESS & RAIL CENTER PLAT 6, IN THE CITY OF LEE'S SUMMIT, JACKSON COUNTY, MISSOURI, BEING MORE PARTICULARLY DESCRIBED BY SCOTT G CHRISMAN, RLS-2594, ON JULY 28, 2023, FOR PROJECT 230360, AS FOLLOWS:

COMMENCING AT THE NORTHWEST CORNER OF LOT 7D, OF SAID LEMONE-SMITH BUSINESS & RAIL CENTER PLAT 6; THENCE S 87°35'45" E, ALONG THE NORTH LINE OF SAID LOT 7D, A DISTANCE OF 40.00 FEET; THENCE S 2°24'15" W, A DISTANCE OF 10.00 FEET, TO THE POINT OF BEGINNING; THENCE, S 87°35'45" E, ALONG A LINE 10.00 FEET SOUTH OF AND PARALLEL WITH THE NORTH LINE OF SAID LOT 7D, A DISTANCE OF 840.64 FEET; THENCE S 27°25'00" E, A DISTANCE OF 34.58 FEET, TO A POINT ON THE SOUTH LINE OF AN EXISTING 40.00 FOOT EASEMENT, AS SHOWN ON THE RECORDED PLAT OF LEMONE-SMITH BUSINESS & RAIL CENTER PLAT 6; THENCE N 87°35'45" W, ALONG THE SOUTH LINE OF SAID EASEMENT, A DISTANCE OF 857.82 FEET; THENCE N 2°23'10" E, A DISTANCE OF 30.00 FEET, TO THE POINT OF BEGINNING, CONTAINING 25,477 SQUARE FEET MORE OR LESS.

I HEREBY CERTIFY THAT THIS REAL PROPERTY LEGAL DESCRIPTION HAS BEEN PREPARED BY ME OR UNDER MY DIRECT SUPERVISION.



\\PHELPS-SERVER\Projects\P\230360\dwg\Easement Vacation.dwg Layout:1-2 Aug 14, 2023 - 3:00pm

SHEET 1 OF 2



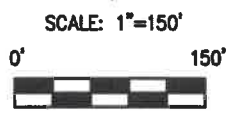
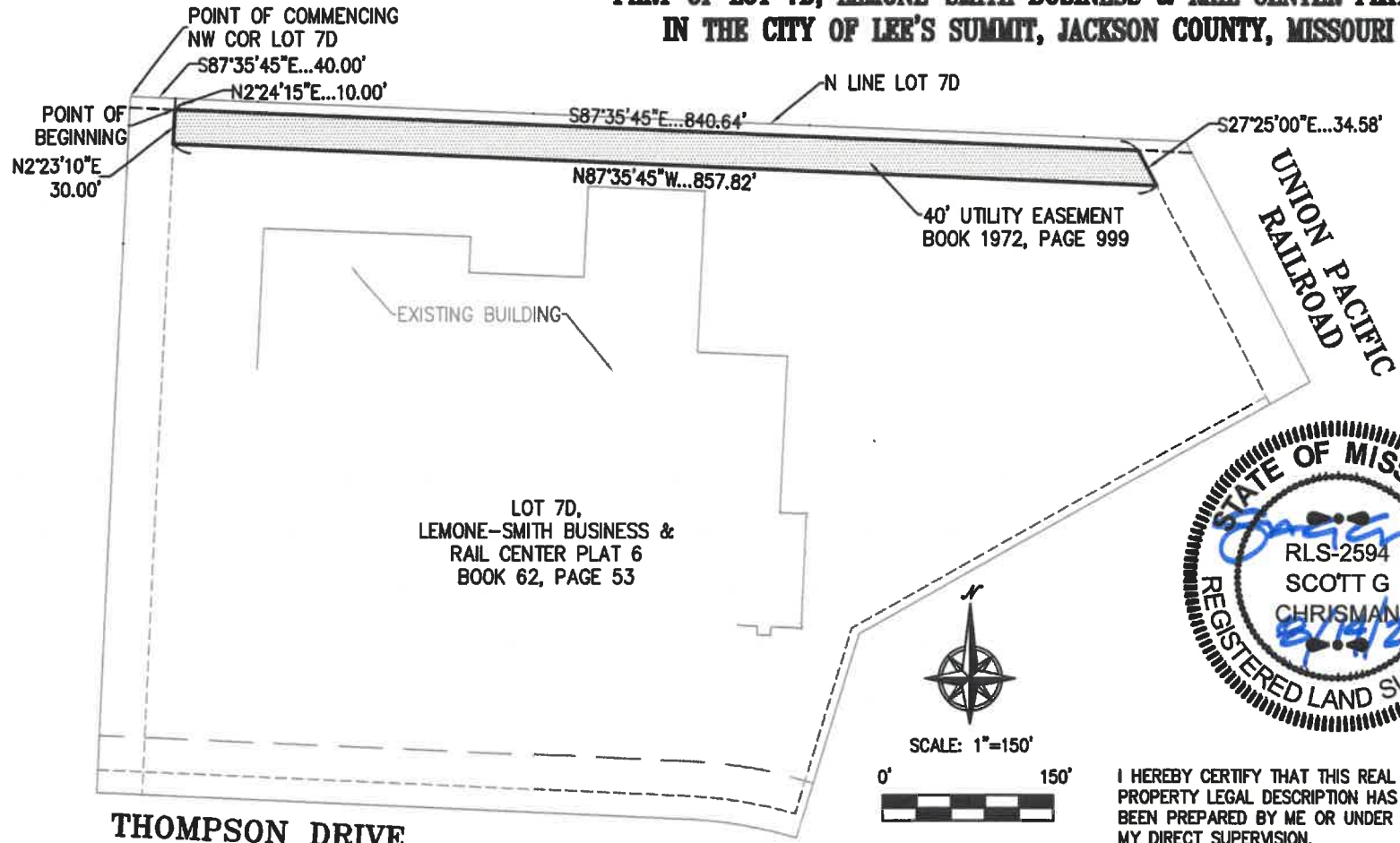
PLANNING  
ENGINEERING  
IMPLEMENTATION

**PHELPS ENGINEERING, INC** (913) 393-1155  
1270 N. Winchester Fax (913) 393-1166  
Olathe, Kansas 66061 www.phelpsengineering.com

CERTIFICATE OF AUTHORIZATION KANSAS LAND SURVEYING - LS-82  
ENGINEERING - E-301  
CERTIFICATE OF AUTHORIZATION MISSOURI LAND SURVEYING-2007001128  
ENGINEERING-2007005058

PROJECT NO. 230360  
DATE: 7/28/2023  
BY: sgc

**EXHIBIT "A"**  
**EASEMENT VACATION**  
**PART OF LOT 7D, LEMONE-SMITH BUSINESS & RAIL CENTER PLAT 6,**  
**IN THE CITY OF LEE'S SUMMIT, JACKSON COUNTY, MISSOURI**



I HEREBY CERTIFY THAT THIS REAL PROPERTY LEGAL DESCRIPTION HAS BEEN PREPARED BY ME OR UNDER MY DIRECT SUPERVISION.

**THOMPSON DRIVE**  
 (Public 60' R/W)

\\PHELPS-SERVER\Projects\P\230360\dwg\Easement Vacation.dwg Layout:2-2 Aug 14, 2023 - 3:49pm

SHEET 2 OF 2



**PHELPS ENGINEERING, INC**  
 PLANNING  
 ENGINEERING  
 IMPLEMENTATION  
 1270 N. Winchester  
 Olathe, Kansas 66061  
 (913) 393-1155  
 Fax (913) 393-1166  
 www.phelpsengineering.com

CERTIFICATE OF AUTHORIZATION KANSAS LAND SURVEYING - LS-82  
 ENGINEERING - E-391  
 CERTIFICATE OF AUTHORIZATION MISSOURI LAND SURVEYING-2007001128  
 ENGINEERING-2007005058

PROJECT NO. 230360  
 DATE: 7/28/2023  
 BY: sgc