



Missing Information

Required:

Electrical

- 120V
- 347V
- Other _____

Customer Approval

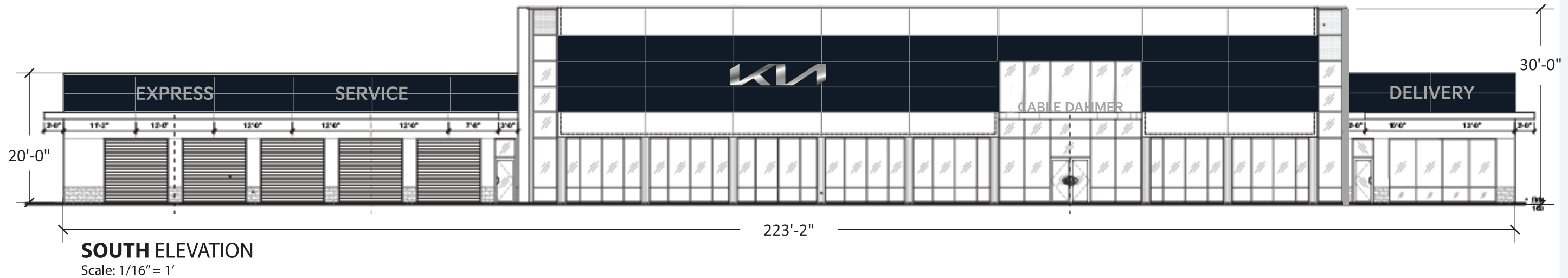
Signature _____

MM/DD/YYYY _____

It is the Customer's responsibility to ensure that the structure of the building is designed and constructed to accept the installation of the signs being ordered. Please ask PSG to provide further details if required.

All rights reserved. The artwork depicted herein are copyright and are the exclusive property of Pattison Sign Group and as such cannot be reproduced in whole or in part without written permission by Pattison Sign Group.

KIA Dealer Identity Program



MO029 Cable Dahmer Kia - New Image

400 NE Colbern Rd, Lee's Summit, MO 64064

MO029
Cable Dahmer Kia
400 NE Colbern Rd
Lee's Summit, MO 64064

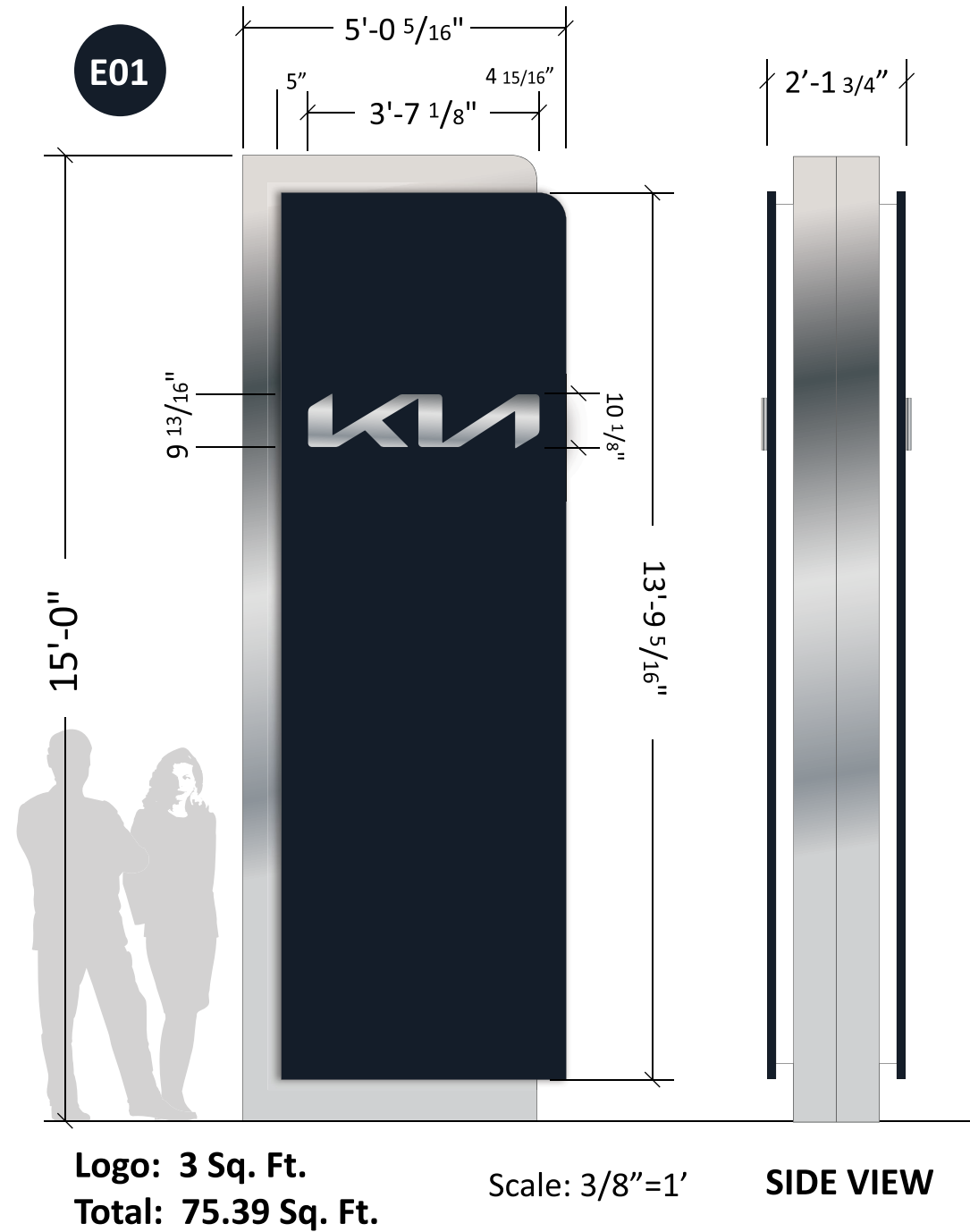
Sign Item

Cover Page

SMALL PYLONS / MONUMENTS

KUSPS15

Black edge always toward street >



KPSN15 Existing sign to be removed

Colors

- Black KIA ACM – Kia Midnight Black
- Metallic Silver KIA ACM – Alfrex Exotic Mica
- Accent Lighting Lens – 7328 White
- LED – 7100K White Illumination

Specifications

Cladding – 4MM KIA Black and Metallic Silver ACM
 Accent Lighting – 7100K LED illumination with 7328 White Polycarbonate Lens
 KIA Wordmark – Milled Aluminum and Plastic
 “Sandwich” Design with 7100K LED illumination thru edge of filler
 Black edge always toward street >

NOTE: PSG to remove & scrap existing pylon. Will attempt to reuse existing foundation. Dealer to provide electrical prior to installation.

Project ID

JH2-44473

Date: 06-06-2022
 Scale: Noted
 Sales: E. Mackle
 Designer: C.Miramontes

Rev. #:

Date:

Revision Note:

Missing Information

Required:

Electrical

- 120V 347V
- Other _____

Customer Approval

Signature _____

MM/DD/YYYY _____

It is the Customer's responsibility to ensure that the structure of the building is designed and constructed to accept the installation of the signs being ordered. Please ask PSG to provide further details if required.

All rights reserved. The artwork depicted herein are copyright and are the exclusive property of Pattison Sign Group and as such cannot be reproduced in whole or in part without written permission by Pattison Sign Group.

MO029

Cable Dahmer Kia
 400 NE Colbern Rd
 Lee's Summit, MO 64064

Sign Item

E01

Note: Size of signage in relation to the surrounding area is approximate. This photo mock-up is intended for location purposes only. A site survey is required.

Any non-compliant Kia logo (i.e., window vinyl, doors/entry vinyl, parking signs, directional signs, multi-tenant signs, reader board graphics, etc.) not represented in this proposal must be updated by the Dealer to the current compliant Kia logo or must be removed.

Missing Information

Required:

Electrical

120V 347V
 Other _____

Customer Approval

Signature _____
MM/DD/YYYY _____

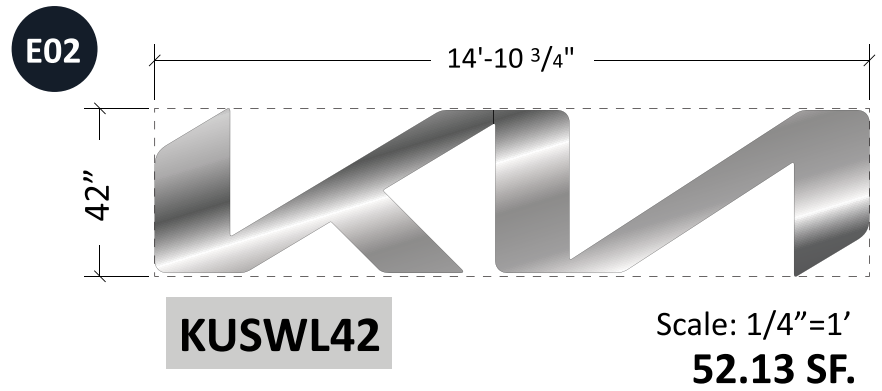
It is the Customer's responsibility to ensure that the structure of the building is designed and constructed to accept the installation of the signs being ordered. Please ask PSG to provide further details if required.

All rights reserved. The artwork depicted herein are copyright and are the exclusive property of Pattison Sign Group and as such cannot be reproduced in whole or in part without written permission by Pattison Sign Group.

MO029
Cable Dahmer Kia
400 NE Colbern Rd
Lee's Summit, MO 64064

Sign Item

E02, E03

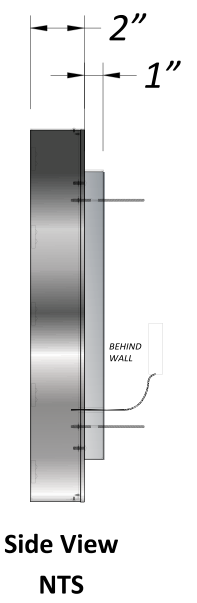


Specifications

- Faces - Fabricated Aluminum painted KIA Metallic Silver
- Returns - 2" Deep Fabricated Aluminum painted KIA Metallic Silver
- Stand-off Pedestal - Spacers = 1-1/4" Long Fabricated Aluminum painted KIA Metallic Silver
- Clear Edge Light Band - .220" Clear Acrylic mounted over .177 Clear Polycarbonate on back of cans for light transmission.
- Illumination - 7100K LED, Power Supplies are remote mounted

Colors

- All Aluminum is painted KIA Silver Metallic
- Edge Light Bank - Clear Acrylic
- LED - 7100K White illumination

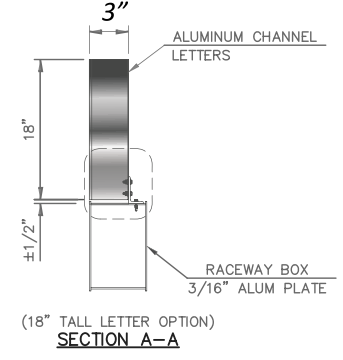


Specifications

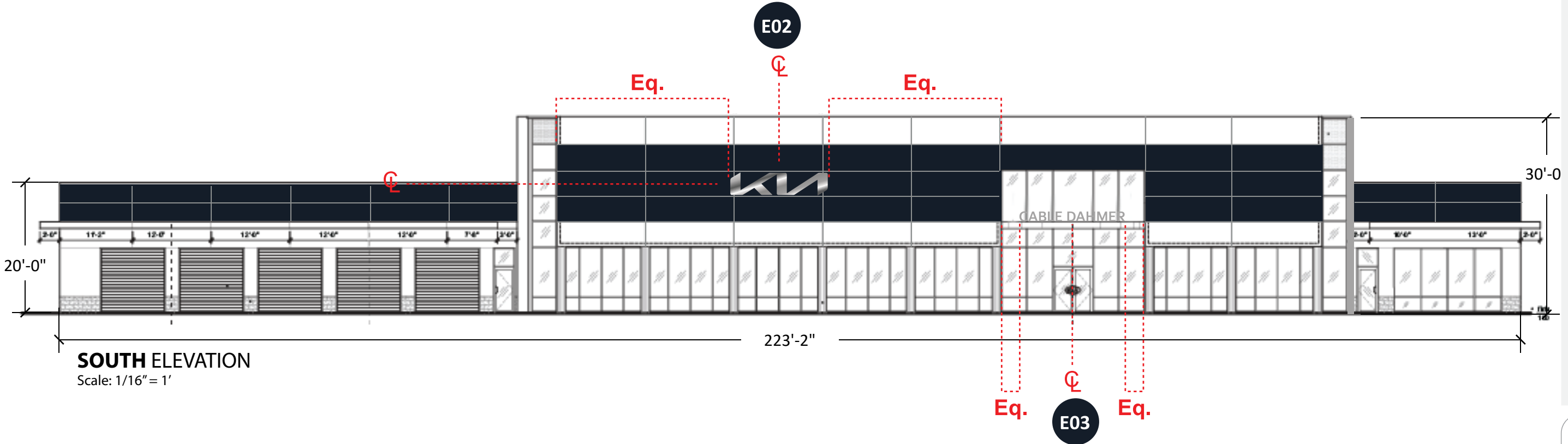
- KIA Font Dealer and Secondary Lettersets
- Faces - KIA Metallic Silver Perforated Vinyl with Clear Overlamine applied to .177" 2447 White Acrylic
- Face Retainer - 1" Metallic Silver Jewelite
- Returns - .040 Anodized Aluminum 3" Deep
- Illumination - 7100K LED, Power Supplies are remote mounted.
- Gallery finished letters

Colors

- Faces - KIA Metallic Silver
- Returns - Anodized Aluminum
- Trimcap - PSG Standard Metallic Silver
- LED - 7100K White Illumination



NOTE: PSG to remove & scrap existing sign. Dealer to provide electrical prior to installation.



SOUTH ELEVATION
Scale: 1/16" = 1'

Note: Size of signage in relation to the building is approximate. This photo mock-up is intended for location purposes only and may not accurately represent the scale of the proposed signage to the building. A site survey is required. Any non-compliant Kia logo (i.e., window vinyl, doors/entry vinyl, parking signs, directional signs, multi-tenant signs, reader board graphics, etc.) not represented in this proposal must be updated by the Dealer to the current compliant Kia logo or must be removed.

Missing Information

Required:

Electrical

120V 347V
 Other _____

Customer Approval

Signature _____

MM/DD/YYYY _____

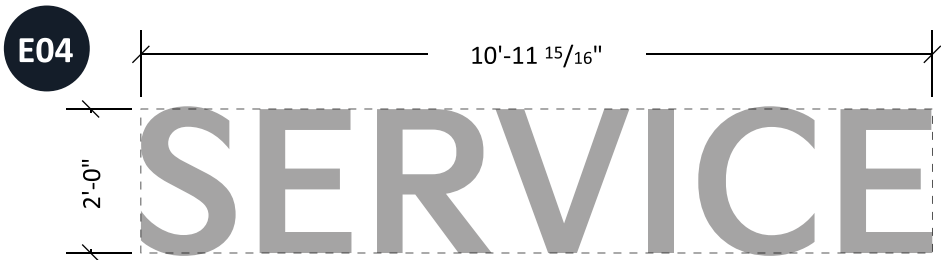
It is the Customer's responsibility to ensure that the structure of the building is designed and constructed to accept the installation of the signs being ordered. Please ask PSG to provide further details if required.

All rights reserved. The artwork depicted herein are copyright and are the exclusive property of Pattison Sign Group and as such cannot be reproduced in whole or in part without written permission by Pattison Sign Group.

MO029
 Cable Dahmer Kia
 400 NE Colbern Rd
 Lee's Summit, MO 64064

Sign Item

E04, E05



KUSSVC24

Font: Kia Signature Bold

Scale: 3/8"=1'-0"
21.98 Sq. Ft.

Side View
 NTS

Specifications

KIA Font Dealer and Secondary Lettersets
 Faces – KIA Metallic Silver Perforated Vinyl with Clear Overlamine applied to .177" 2447 White Acrylic
 Face Retainer – 1" Metallic Silver Jewelite
 Returns - .040 Anodized Aluminum 3" Deep
 Illumination – 7100K LED, Power Supplies are remote mounted

Colors

- Faces – KIA Metallic Silver
- Returns – Anodized Aluminum
- Trimcap – PSG Standard Metallic Silver
- LED – 7100K White Illumination



KUSDNL24

Font: Kia Signature Bold

Scale: 3/8"=1'-0"
23.38 Sq. Ft.

Side View
 NTS

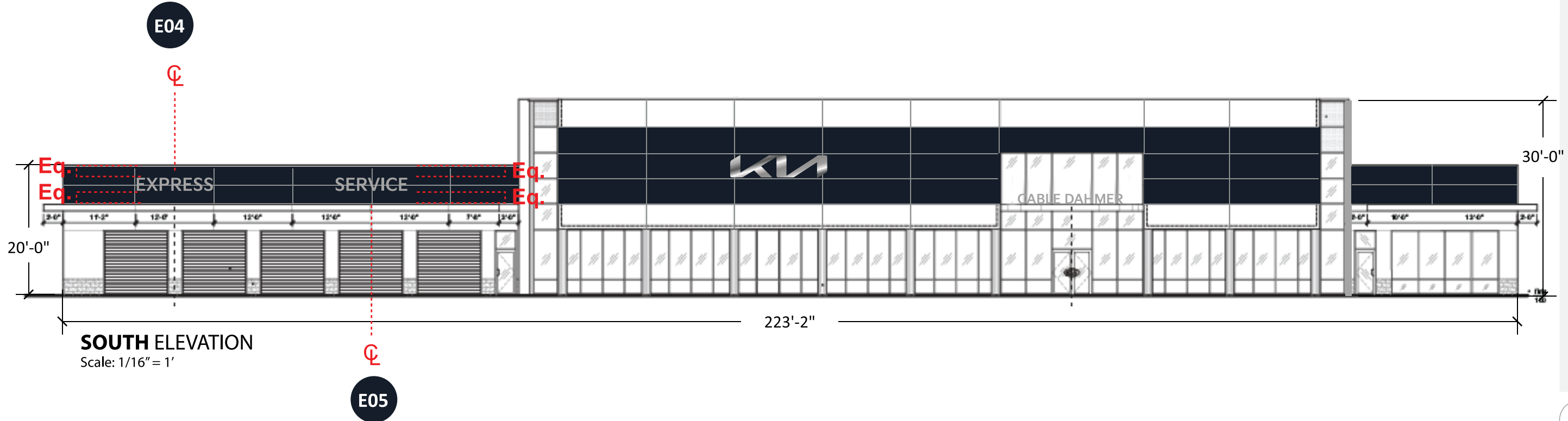
Specifications

KIA Font Dealer and Secondary Lettersets
 Faces – KIA Metallic Silver Perforated Vinyl with Clear Overlamine applied to .177" 2447 White Acrylic
 Face Retainer – 1" Metallic Silver Jewelite
 Returns - .040 Anodized Aluminum 3" Deep
 Illumination – 7100K LED, Power Supplies are remote mounted

Colors

- Faces – KIA Metallic Silver
- Returns – Anodized Aluminum
- Trimcap – PSG Standard Metallic Silver
- LED – 7100K White Illumination

NOTE: PSG to remove & scrap existing sign. Dealer to provide electrical prior to installation.



SOUTH ELEVATION

Scale: 1/16" = 1'

Note: Size of signage in relation to the building is approximate. This photo mock-up is intended for location purposes only and may not accurately represent the scale of the proposed signage to the building. A site survey is required.

Any non-compliant Kia logo (i.e., window vinyl, doors/entry vinyl, parking signs, directional signs, multi-tenant signs, reader board graphics, etc.) not represented in this proposal must be updated by the Dealer to the current compliant Kia logo or must be removed.

Project ID

JH2-44473

Date: 06-06-2022
 Scale: Noted
 Sales: E. Mackle
 Designer: C.Miramontes

Rev. #:

Date:

Revision Note:

Missing Information

Required:

Electrical

120V 347V
 Other _____

Customer Approval

Signature _____
 MM/DD/YYYY _____

It is the Customer's responsibility to ensure that the structure of the building is designed and constructed to accept the installation of the signs being ordered. Please ask PSG to provide further details if required.

All rights reserved. The artwork depicted herein are copyright and are the exclusive property of Pattison Sign Group and as such cannot be reproduced in whole or in part without written permission by Pattison Sign Group.

MO029
 Cable Dahmer Kia
 400 NE Colbern Rd
 Lee's Summit, MO 64064

Sign Item

E06

E06

DELIVERY

KUSDLV24

Font: Kia Signature Bold

Scale: 3/8"=1'-0"
25.88 Sq. Ft.

3"

Side View
NTS

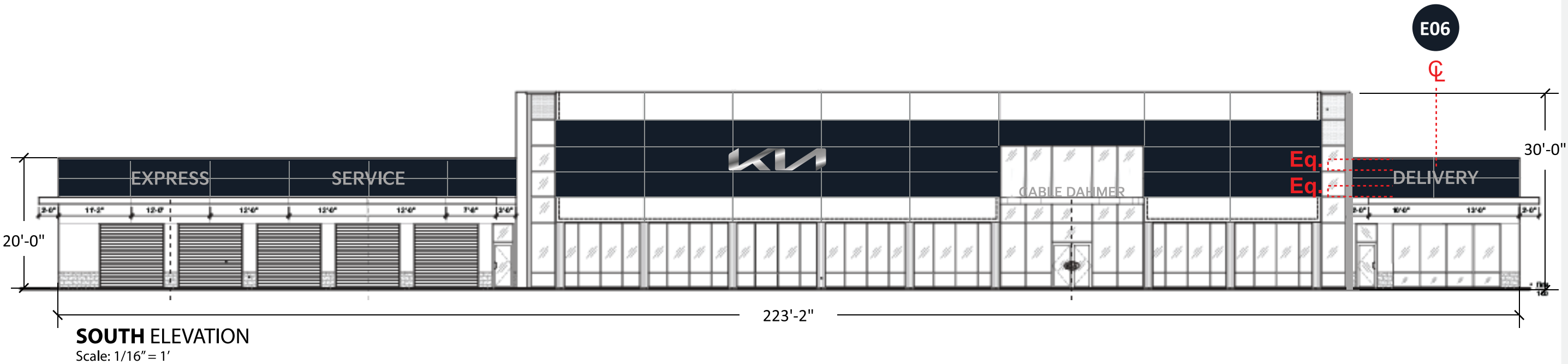
Specifications

KIA Font Dealer and Secondary Lettersets
 Faces – KIA Metallic Silver Perforated Vinyl with Clear Overlamine applied to .177" 2447 White Acrylic
 Face Retainer – 1" Metallic Silver Jewelite
 Returns - .040 Anodized Aluminum 3" Deep
 Illumination – 7100K LED, Power Supplies are remote mounted

Colors

- Faces – KIA Metallic Silver
- Returns – Anodized Aluminum
- Trimcap – PSG Standard Metallic Silver
- LED – 7100K White Illumination

NOTE: PSG to remove & scrap existing sign. Dealer to provide electrical prior to installation.

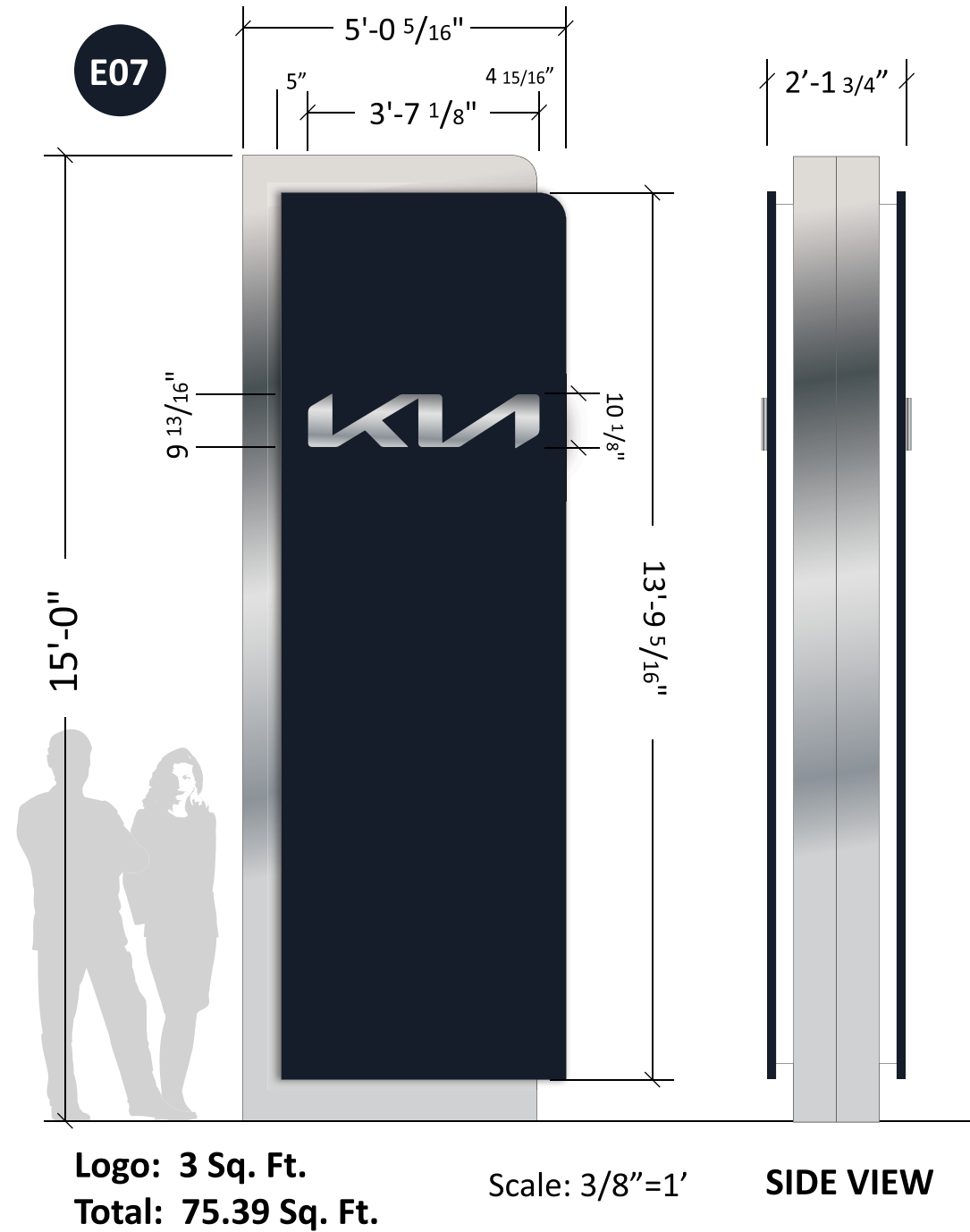


Note: Size of signage in relation to the building is approximate. This photo mock-up is intended for location purposes only and may not accurately represent the scale of the proposed signage to the building. A site survey is required.
 Any non-compliant Kia logo (i.e., window vinyl, doors/entry vinyl, parking signs, directional signs, multi-tenant signs, reader board graphics, etc.) not represented in this proposal must be updated by the Dealer to the current compliant Kia logo or must be removed.

SMALL PYLONS / MONUMENTS

KUSPS15

Black edge always toward street >



KPSN15 Existing sign to be removed

Colors

- Black KIA ACM – Kia Midnight Black
- Metallic Silver KIA ACM – Alfrex Exotic Mica
- Accent Lighting Lens – 7328 White
- LED – 7100K White Illumination

Specifications

Cladding – 4MM KIA Black and Metallic Silver ACM
 Accent Lighting – 7100K LED illumination with 7328 White Polycarbonate Lens
 KIA Wordmark – Milled Aluminum and Plastic
 “Sandwich” Design with 7100K LED illumination thru edge of filler
 Black edge always toward street >

NOTE: PSG to remove & scrap existing pylon.
Will attempt to reuse existing foundation.
Dealer to provide electrical prior to installation.

Project ID

JH2-44473

Date: 06-06-2022
 Scale: Noted
 Sales: E. Mackle
 Designer: C.Miramontes

Rev. #:
 Date:

Revision Note:

Missing Information

Required:

Electrical

- 120V 347V
- Other _____

Customer Approval

Signature _____

MM/DD/YYYY _____

It is the Customer's responsibility to ensure that the structure of the building is designed and constructed to accept the installation of the signs being ordered. Please ask PSG to provide further details if required.

All rights reserved. The artwork depicted herein are copyright and are the exclusive property of Pattison Sign Group and as such cannot be reproduced in whole or in part without written permission by Pattison Sign Group.

MO029

Cable Dahmer Kia
 400 NE Colbern Rd
 Lee's Summit, MO 64064

Sign Item

E07

Note: Size of signage in relation to the surrounding area is approximate. This photo mock-up is intended for location purposes only. A site survey is required.

Any non-compliant Kia logo (i.e., window vinyl, doors/entry vinyl, parking signs, directional signs, multi-tenant signs, reader board graphics, etc.) not represented in this proposal must be updated by the Dealer to the current compliant Kia logo or must be removed.

Project ID

JH2-44473

Date: 06-06-2022
 Scale: Noted
 Sales: E. Mackle
 Designer: C.Miramontes

Rev. #:
Date:

Revision Note:

Missing Information

Required:

Electrical

120V 347V
 Other _____

Customer Approval

Signature _____
 MM/DD/YYYY _____

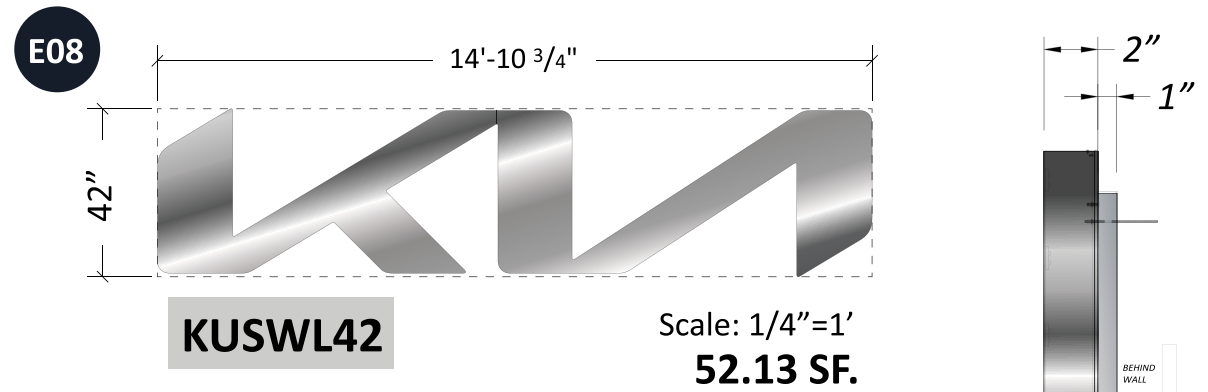
It is the Customer's responsibility to ensure that the structure of the building is designed and constructed to accept the installation of the signs being ordered. Please ask PSG to provide further details if required.

All rights reserved. The artwork depicted herein are copyright and are the exclusive property of Pattison Sign Group and as such cannot be reproduced in whole or in part without written permission by Pattison Sign Group.

MO029
 Cable Dahmer Kia
 400 NE Colbern Rd
 Lee's Summit, MO 64064

Sign Item

E08



Specifications

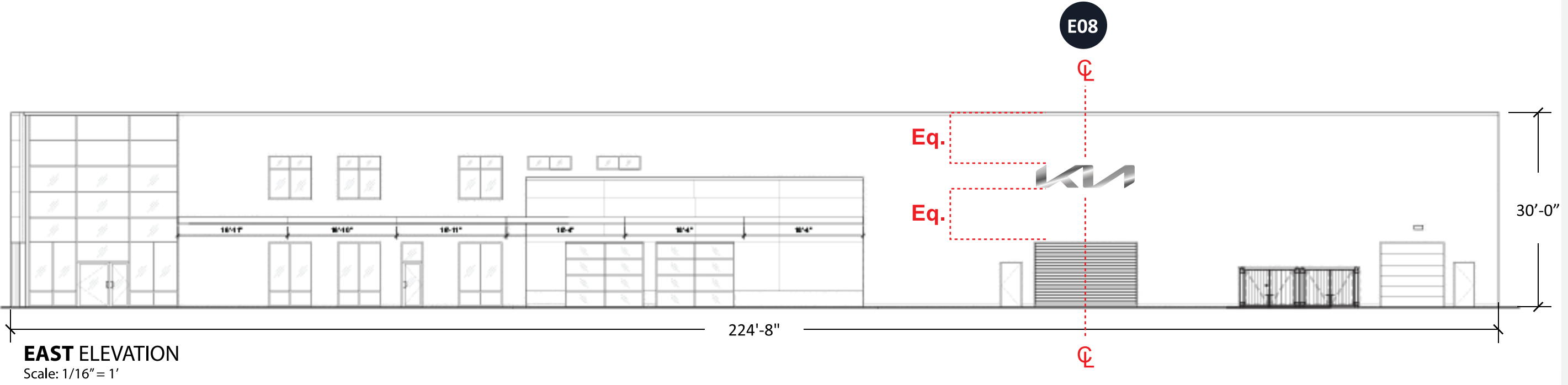
- Faces – Fabricated Aluminum painted KIA Metallic Silver
- Returns – 2” Deep Fabricated Aluminum painted KIA Metallic Silver
- Stand-off Pedestal - Spacers = 1-1/4” Long Fabricated Aluminum painted KIA Metallic Silver
- Clear Edge Light Band - .220” Clear Acrylic mounted over .177 Clear Polycarbonate on back of cans for light transmission.
- Illumination – 7100K LED, Power Supplies are remote mounted

Colors

- All Aluminum is painted KIA Silver Metallic
- Edge Light Bank – Clear Acrylic
- LED – 7100K White illumination

Side View
 NTS

NOTE: PSG to remove & scrap existing sign. Dealer to provide electrical prior to installation.



EAST ELEVATION
 Scale: 1/16" = 1'

Note: Size of signage in relation to the building is approximate. This photo mock-up is intended for location purposes only and may not accurately represent the scale of the proposed signage to the building. A site survey is required.
 Any non-compliant Kia logo (i.e., window vinyl, doors/entry vinyl, parking signs, directional signs, multi-tenant signs, reader board graphics, etc.) not represented in this proposal must be updated by the Dealer to the current compliant Kia logo or must be removed.

REMOVALS



NOTE: PSG to remove & scrap existing signs.



NOTE: PSG to remove & scrap existing signs.



NOTE: PSG to remove & scrap existing signs.



NOTE: PSG to remove & scrap existing signs.



NOTE: PSG to remove & scrap existing signs.



NOTE: PSG to remove & scrap existing signs.

Project ID

JH2-44473

Date: 06-06-2022
 Scale: Noted
 Sales: E. Mackle
 Designer: C.Miramontes

Rev. #:

Date:

Revision Note:

Missing Information

Required:

Final dimensions subject to site survey and/or technical specifications.

Electrical

120V 347V
 Other _____

Customer Approval

Signature _____

MM/DD/YYYY _____

It is the Customer's responsibility to ensure that the structure of the building is designed and constructed to accept the installation of the signs being ordered. Please ask PSG to provide further details if required.

All rights reserved. The artwork depicted herein are copyright and are the exclusive property of Pattison Sign Group and as such cannot be reproduced in whole or in part without written permission by Pattison Sign Group.

MO029

Cable Dahmer Kia
 400 NE Colbern Rd
 Lee's Summit, MO 64064

Sign Item

Removals

Note: Size of signage in relation to the building is approximate. This photo mock-up is intended for location purposes only and may not accurately represent the scale of the proposed signage to the building. A site survey is required.

Any non-compliant Kia logo (i.e., window vinyl, doors/entry vinyl, parking signs, directional signs, multi-tenant signs, reader board graphics, etc.) not represented in this proposal must be updated by the Dealer to the current compliant Kia logo or must be removed.



520 W Summit Hill, Suite 702, Knoxville TN, 37902
 (Toll Free) 1.866.635.1110 (Fax) 1.888.694.1106
 www.pattisonsign.com



This sign to be installed in accordance with the requirements of Article 600 of the National Electrical Code and/or other applicable local codes. This includes proper grounding and bonding of the sign.



Fluorescent, Neon and HID lamps contain Mercury (HG). Dispose of the lamps according to Local, Provincial, State or Federal Laws.

Project ID

JH2-44473

Date: 06-06-2022
Scale: Noted
Sales: E. Mackle
Designer: C.Miramontes

Rev. #:

Date:

Revision Note:

Missing Information

Required:

Electrical

120V 347V

Other _____

Customer Approval

Signature _____

MM/DD/YYYY _____

It is the Customer's responsibility to ensure that the structure of the building is designed and constructed to accept the installation of the signs being ordered. Please ask PSG to provide further details if required.

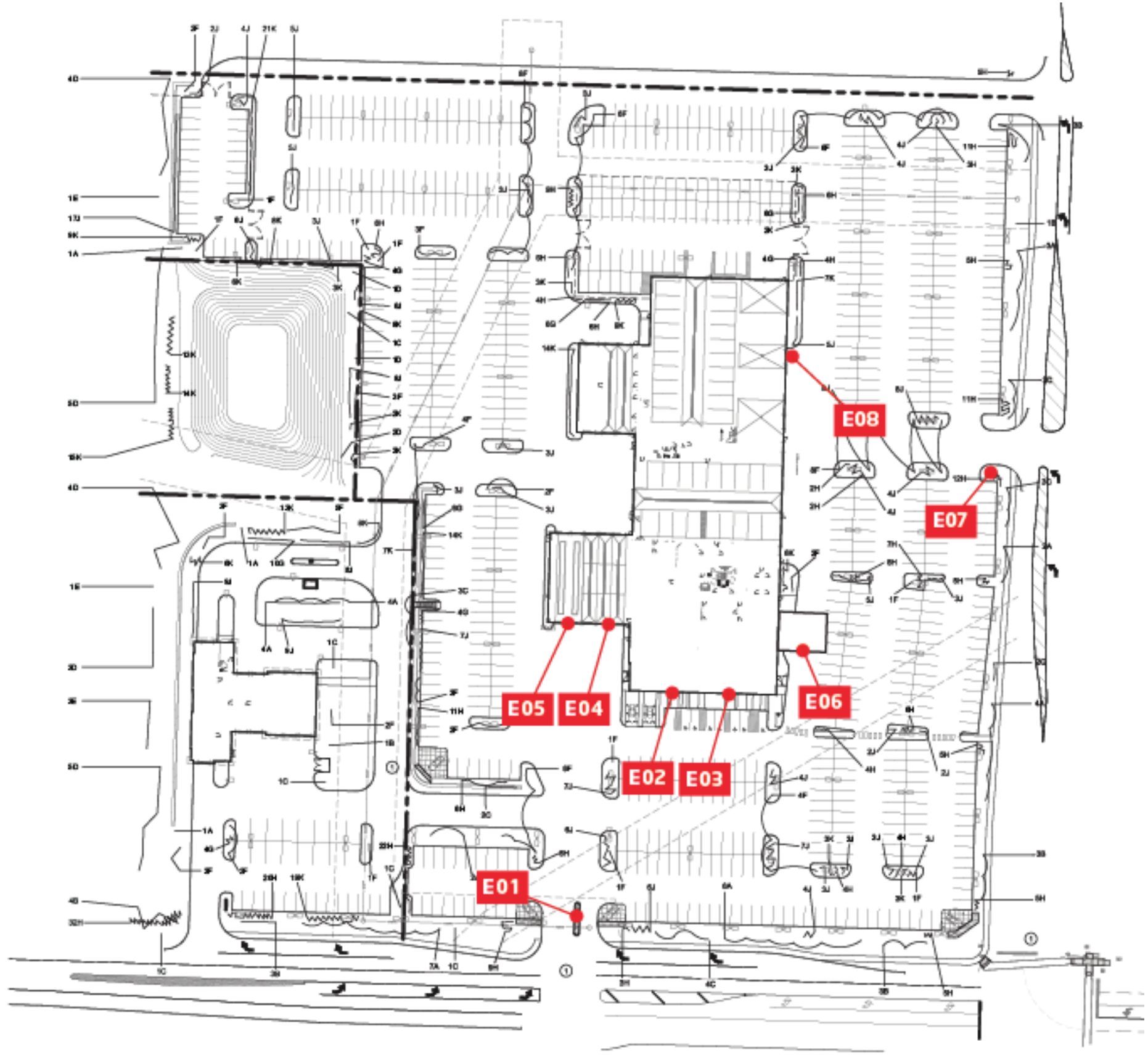
All rights reserved. The artwork depicted herein are copyright and are the exclusive property of Pattison Sign Group and as such cannot be reproduced in whole or in part without written permission by Pattison Sign Group.

MO029
Cable Dahmer Kia
400 NE Colbern Rd
Lee's Summit, MO 64064

Sign Item

Siteplan

- E01** KUSPS15 Pylon Sign
- E02** KUSWL42 Wall Sign
- E03** KUSGALDNL18 Dealer Name Letters
- E04** KUSSVC24 Service Letters
- E05** KUSDNL24 Express Letters
- E06** KUSDLV24 Delivery Letters
- E07** KUSPS15 Pylon Sign
- E08** KUSWL42 Wall Sign



Any non-compliant Kia logo (i.e., window vinyl, doors/entry vinyl, parking signs, directional signs, multi-tenant signs, reader board graphics, etc.) not represented in this proposal must be updated by the Dealer to the current compliant Kia logo or must be removed.



520 W Summit Hill, Suite 702, Knoxville TN, 37902
(Toll Free) 1.866.635.1110 (Fax) 1.888.694.1106
www.pattisonsign.com



This sign to be installed in accordance with the requirements of Article 600 of the National Electrical Code and/or other applicable local codes. This includes proper grounding and bonding of the sign.



Fluorescent, Neon and HID lamps contain Mercury (HG). Dispose of the lamps according to Local, Provincial, State or Federal Laws.