

C:\13958.01\Civil\3D\Production Drawings\Site Plans\13958.01\02000.dwg Layout: C5 Utility Plan -- Thursday, March 03, 2022, 8:55am -- Copyright 2022, George Butler Associates, Inc. Architect: 00212, Professional Engineer: 000133, Professional Land Surveyor: 000269

GBA

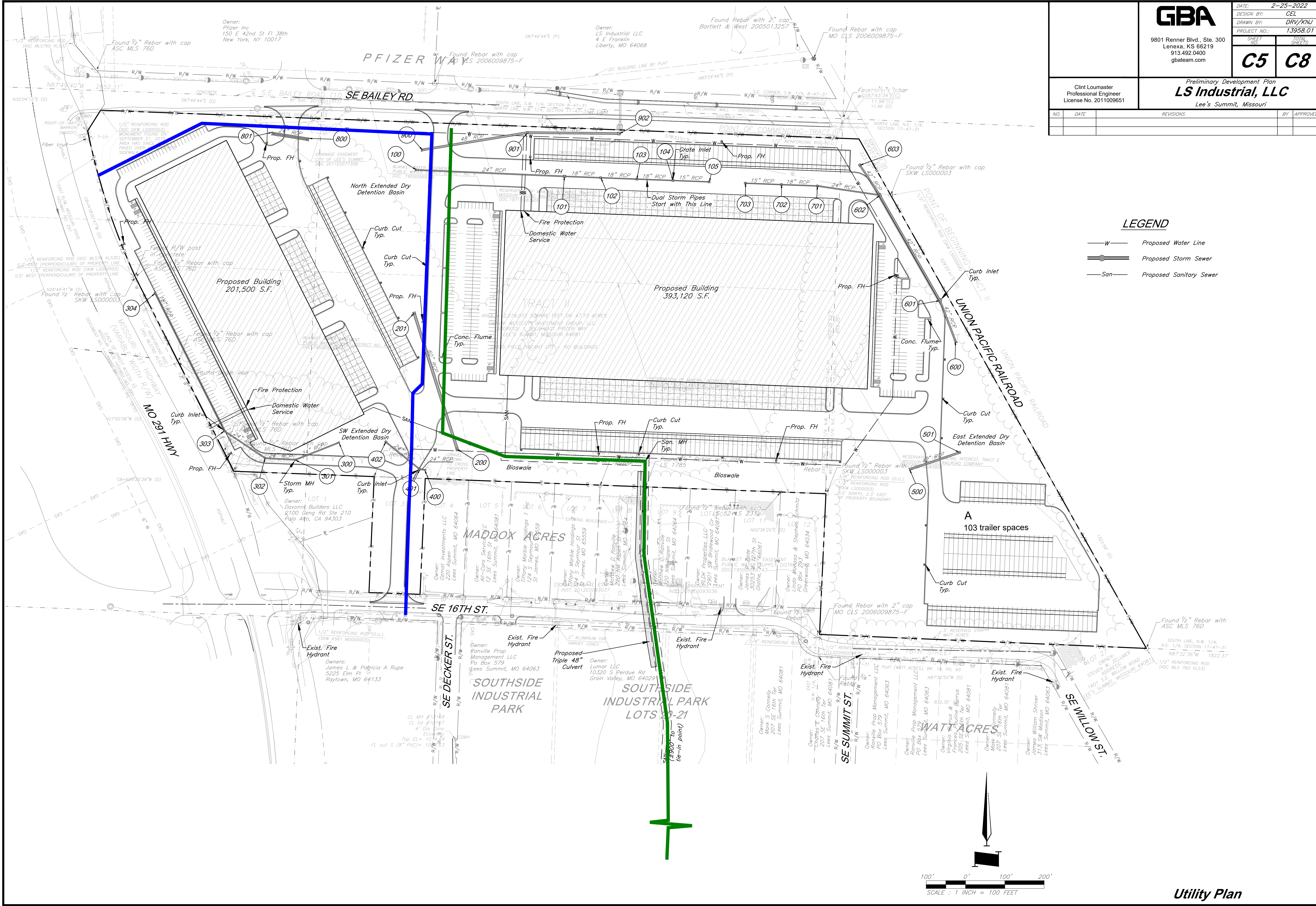
9801 Renner Blvd., Ste. 300
Lenexa, KS 66219
913.492.0400
gbateam.com

DATE:	2-25-2022
DESIGN BY:	CEL
DRAWN BY:	DRV/KNJ
PROJECT NO.:	13958.01
SHEET NO.:	TOTAL SHEETS
C5	C8

Clint Loumaster
Professional Engineer
License No. 201100951

Preliminary Development Plan
LS Industrial, LLC
Lee's Summit, Missouri

NO.	DATE	REVISIONS	BY	APPROVED



LEGEND

- Proposed Water Line
- Proposed Storm Sewer
- Proposed Sanitary Sewer

Utility Plan