

PRYOR MIXED-USE
 150 HWY AND PRYOR ROAD
 LEE'S SUMMIT, MO

SHEET TITLE
Building 1 Elevations

PROJECT NUMBER: 23074

SHEET NUMBER:

A-200



PRYOR MIXED-USE
150 HWY AND PRYOR ROAD
LEE'S SUMMIT, MO

SHEET TITLE
Building 1 Elevations

PROJECT NUMBER: 23074

SHEET NUMBER:

A-201

PRYOR MIXED-USE
150 HWY AND PRYOR ROAD
LEE'S SUMMIT, MO

SHEET TITLE
Building 2 & 3 Elevations

PROJECT NUMBER: 23074

SHEET NUMBER:

A-202



3 BLDG 2 & 3 SIDE ELEVATION
3/32" = 1'-0"



2 BLDG 2 & 3 BACK ELEVATION
3/32" = 1'-0"



1 BLDG 2 & 3 FRONT ELEVATION
3/32" = 1'-0"



4 BLDG 4 WEST ELEVATION
3/32" = 1' - 0"



3 BLDG 4 NORTH ELEVATION
3/32" = 1' - 0"



2 BLDG 4 SOUTH ELEVATION
3/32" = 1' - 0"



1 BLDG 4 EAST ELEVATION
3/32" = 1' - 0"

rosemann & ASSOCIATES P.C.
ARCHITECTURE
INTERIOR DESIGN
ENGINEERING
PLANNING
1526 Grand Boulevard
Kansas City, MO 64108-1404
P: 816.472.1448
W: www.rosemann.com
© 2023 Rosemann & Associates, P.C.
DENVER • KANSAS CITY • ST. LOUIS • ATLANTA

PRYOR MIXED-USE
150 HWY AND PRYOR ROAD
LEE'S SUMMIT, MO

SHEET TITLE
Building 4 Elevations
PROJECT NUMBER: 23074
SHEET NUMBER:

A-203

**PRYOR MIXED-USE
150 HWY AND PRYOR ROAD
LEE'S SUMMIT, MO**

SHEET TITLE
LOT 3 & 4 ELEVATIONS

PROJECT NUMBER: 23074

SHEET NUMBER:

A-204



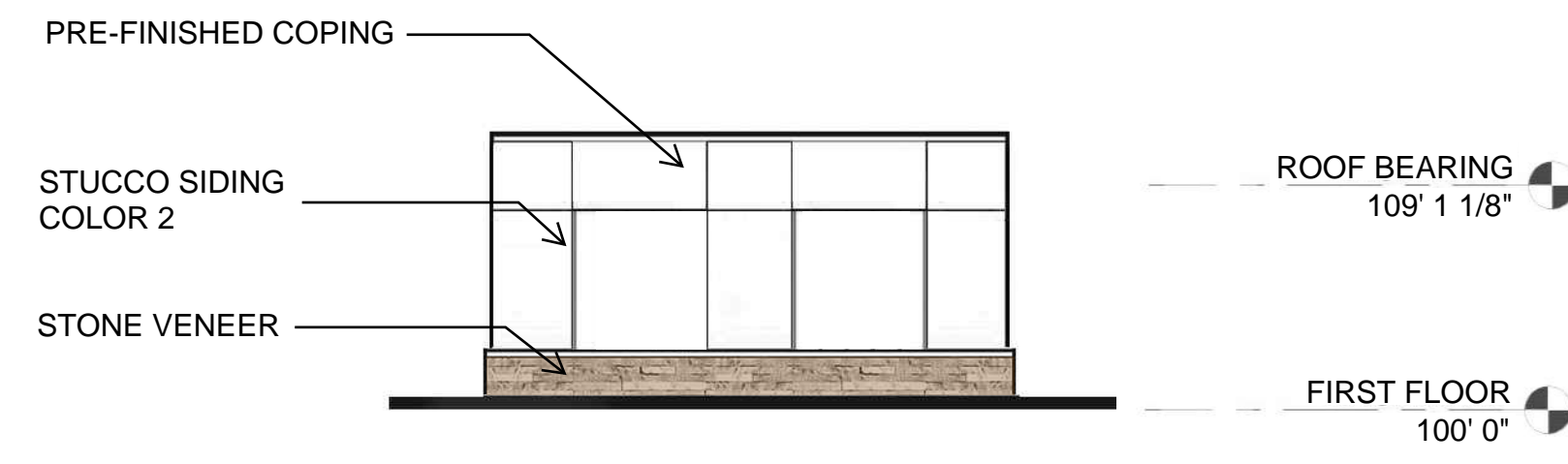
3 TYPICAL REAR SOUTH ELEVATION
1/8" = 1' -0"



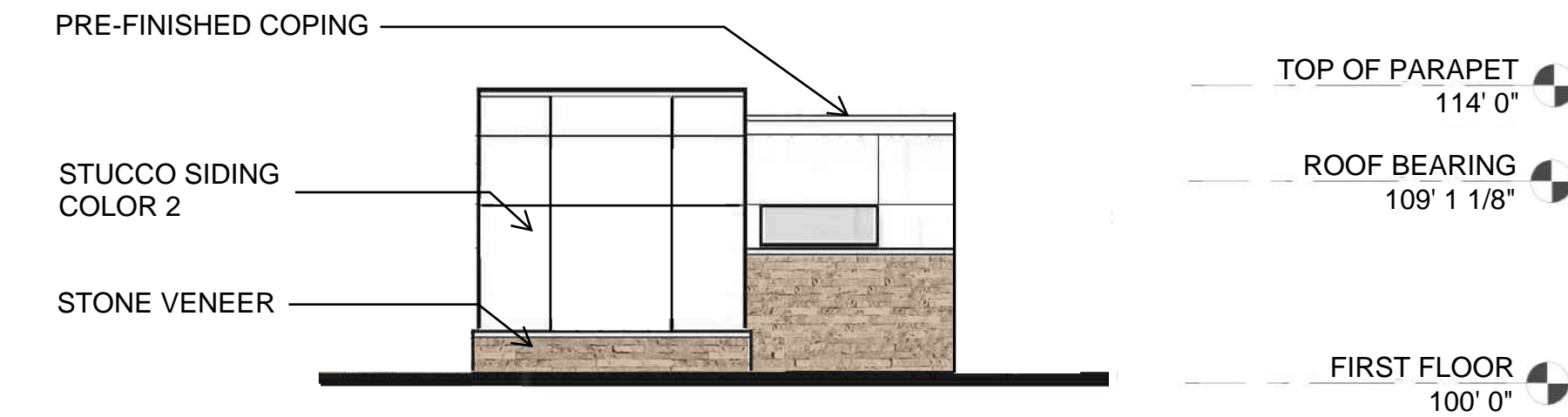
2 TYPICAL SIDE ELEVATION
1/8" = 1' -0"



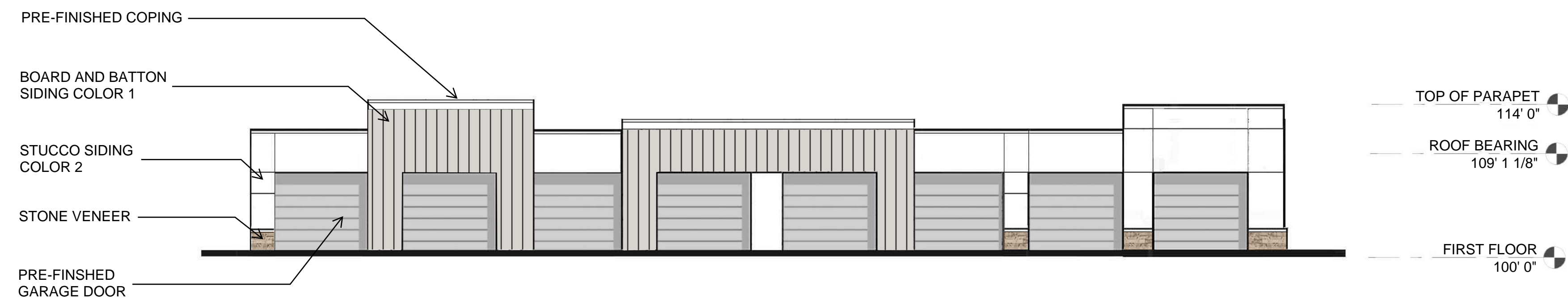
1 TYPICAL ENTRY NORTH ELEVATION
1/8" = 1' -0"



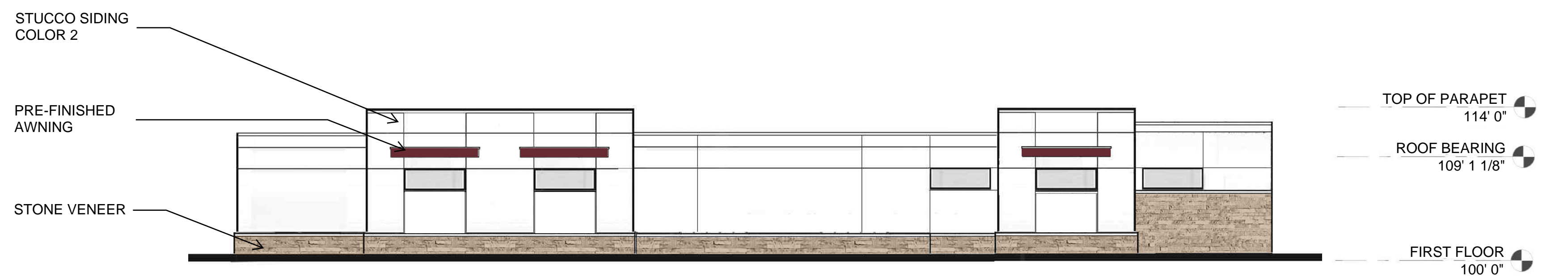
4 TYPICAL SIDE ELEVATION
1/8" = 1'-0"



3 SIDE ELEVATION (VISIBLE FROM PRYOR ROAD)
1/8" = 1'-0"



2 TYPICAL FRONT GARAGE ELEVATION
1/8" = 1'-0"



1 TYPICAL REAR GARAGE ELEVATION
1/8" = 1'-0"

rosemann & ASSOCIATES P.C.
 ARCHITECTURE
 INTERIOR DESIGN
 ENGINEERING
 PLANNING

1526 Grand Boulevard
 Kansas City, MO 64108-1404
 P: 816.472.1448
 W: www.rosemann.com
 © 2023 Rosemann & Associates, P.C.

DENVER ▲ KANSAS CITY ▲ ST. LOUIS ▲ ATLANTA

PRYOR MIXED-USE
150 HWY AND PRYOR ROAD
LEE'S SUMMIT, MO

SHEET TITLE
DETACHED GARAGE ELEVATIONS

PROJECT NUMBER: 23074

SHEET NUMBER:

A-205