

# 1970s

# 1980s

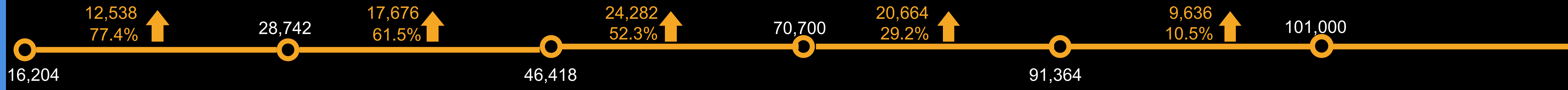
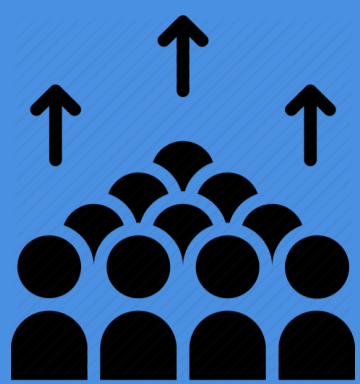
# 1990s

# 2000s

# 2010s

# 2020s

## population growth



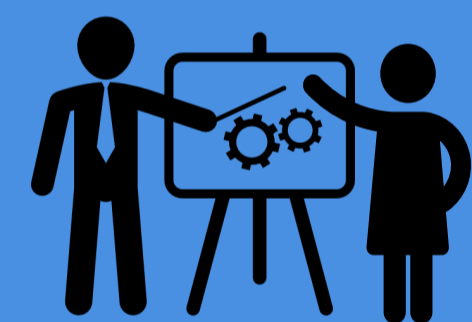
## issues



- sewer system
- water supply
- transportation
- parks & rec system
- police station
- fire dept support

continued into 1990s

## strategic planning



## solutions



- sales tax leakage
- stormwater
- poor highway access
- need design standards
- transportation impact
- demand for cultural arts
- downtown vitality

- stormwater
- curbs
- police presence
- employee compensation
- fire/EMS
- demand for cultural arts

continued into 2020s

- balanced economic development
- strong neighborhoods with housing choices
- cultural and recreational activities
- inclusive community engagement
- community health and well-being
- collaborative relations w/ education partners
- proactive infrastructure development

### Lee's Summit: 21st Century

GO bond: Quality '88

- 3/8 cent sales tax for park improvements
- 1/2 cent sales tax for transportation
- GO bonds for:
  - police/court facility
  - fire station #6
- water tap fee sewer connection fee
- 1/2 cent sales tax for capital improvements
- hotel/motel tax
- transportation excise tax
- adoption of charter

### Lee's Summit 360

- Summit Woods TIF I-470 & Chapel Ridge TIF
- access management policy
- downtown master plan
- adoption of UDO
- adoption of design standards
- 1/4 of 1% sales tax for parks
- 1/2 cent sales tax for capital improvements renewed
- amendments to the charter
- GO bonds for:
  - maintenance/street facility
  - downtown improvements
  - new city hall
  - stormwater improvements
  - public safety - fire station & animal control
  - sidewalk rehab
  - connectivity program
  - salt dome

- increase compensation program
- increase police districts from 7 to 10
- added 2 ambulances, 9 staff at fire station #6
- GO bonds for public safety:
  - emergency services radio
  - police facility improvements
  - indoor firearm training
  - emergency services radio equipment & connectivity
  - fire station #3
  - equipment & apparatus
- GO bonds for:
  - public infrastructure (curbs, sidewalks)
  - 291/50 hwy improvements
- parks 1/4 cent & capital improvements 1/2 cent sales taxes (cont. 15 yrs)
- downtown cultural arts center & Legacy Park amphitheater
- economic development policy

Ignite! Your ideas. Our future.