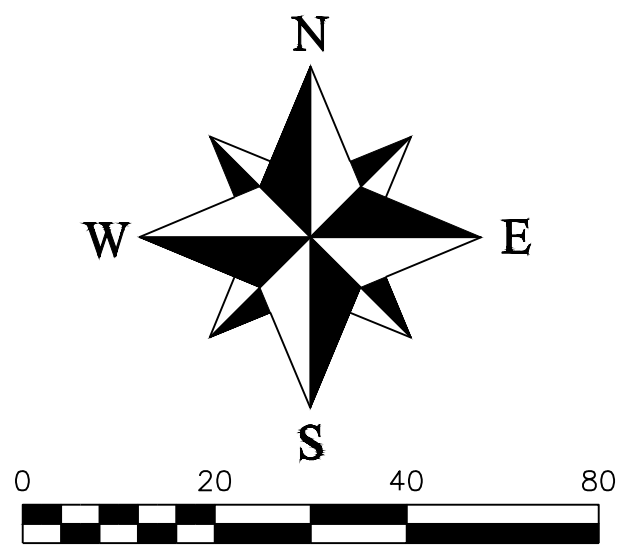
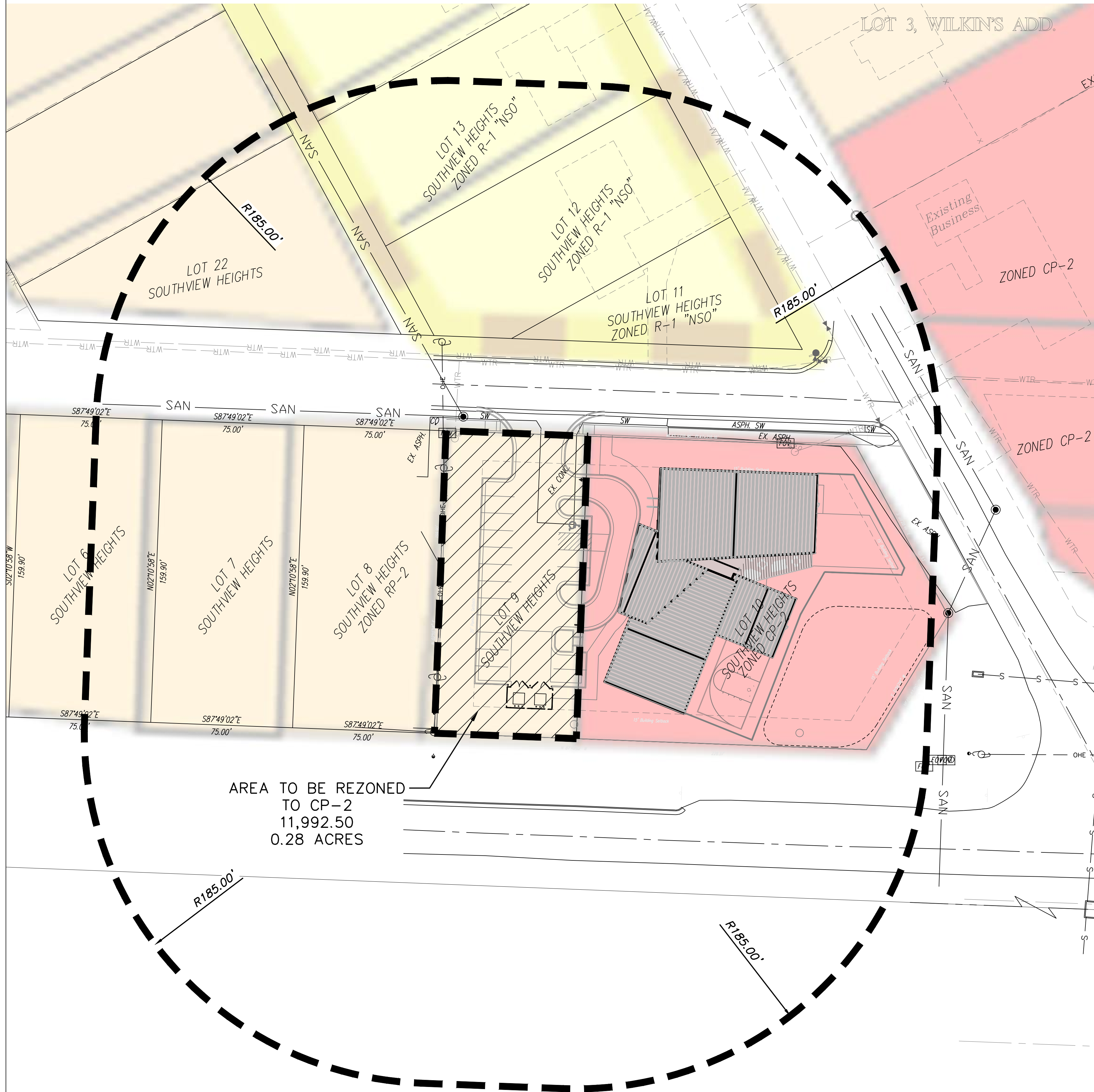


REZONING EXHIBIT

PRO DEO Lots 9 & 10, Southview Heights

Part of Section 8, Township 47 North, Range 31 West
Lee's Summit, Jackson County, Missouri



PROPERTY DESCRIPTION
LOTS 9 & 10, SOUTHVIEW HEIGHTS.

DATE	REVISIONS

Part of Section 8
Township 47 North, Range 31 West
Lee's Summit, Jackson County, Missouri

REZONING EXHIBIT					
SHEET	SECTION	TOWNSHIP	RANGE	COUNTY	JOB NO.
1 OF 1	8	47	31 W	Jackson	PRO DEO LS40
DRAWN BY M. Schlicht, PLS., PE					DATE OF PREPARATION January 2, 2024
SCALE 1" = 20'					

PROFESSIONAL SEAL

ENGINEERING SOLUTIONS
 ENGINEERING & SURVEYING
 50 SE 30TH STREET
 LEE'S SUMMIT, MO 64082
 P: (816) 623-9888 F: (816) 623-9849