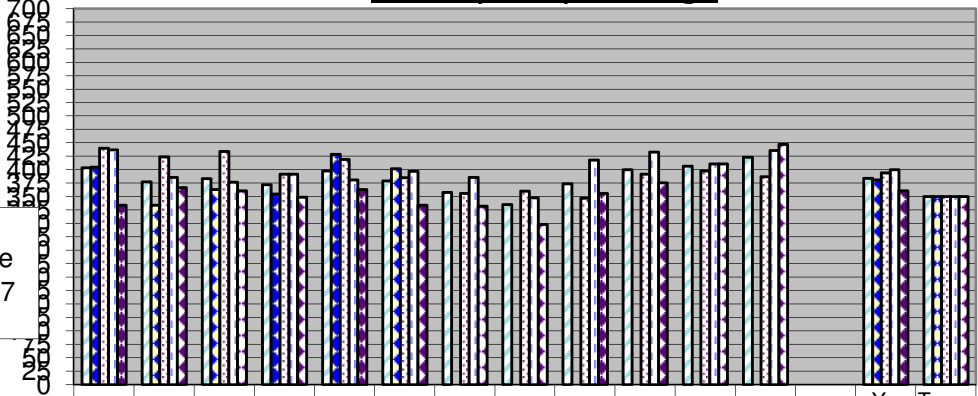


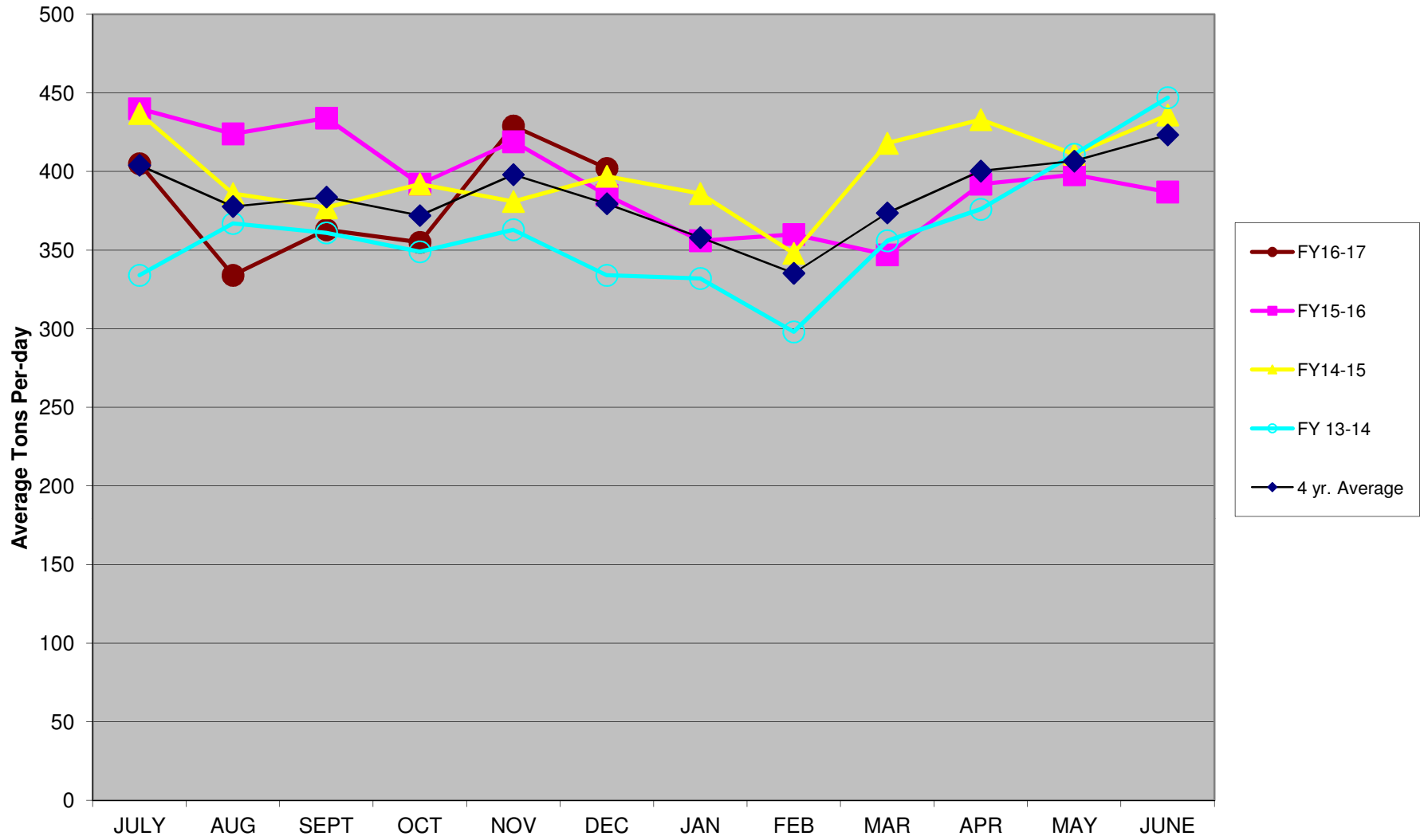
Monthly Daily Tonnage



4 yr. Average
 FY16-17

	JULY	AUG	SEPT	OCT	NOV	DEC	JAN	FEB	MAR	APR	MAY	JUNE	Yr. Avg.	Target
4 yr. Average	404	378	384	372	398	380	358	335	374	400	407	423	384	350
FY16-17	405	334	363	355	429	402							381	350
FY15-16	440	424	434	392	419	385	356	360	347	392	398	387	395	350
FY14-15	437	386	377	392	381	397	386	348	418	433	411	436	400	350
FY 13-14	334	367	361	349	363	334	332	298	356	376	411	447	361	350

Monthly Daily Tonnage Average



Daily Average by Month

4 Year Average for Daily Tonnage by Month

	4 yr. Average	FY16-17	FY15-16	FY14-15	FY 13-14
JULY	404	405	440	437	334
AUG	378	334	424	386	367
SEPT	384	363	434	377	361
OCT	372	355	392	392	349
NOV	398	429	419	381	363
DEC	380	402	385	397	334
JAN	358		356	386	332
FEB	335		360	348	298
MAR	374		347	418	356
APR	400		392	433	376
MAY	407		398	411	411
JUNE	423		387	436	447
Yr. Avg.	384	381	395	400	361
Target	350	350	350	350	350