

EXHIBIT "A"
(Page 1 of 2)

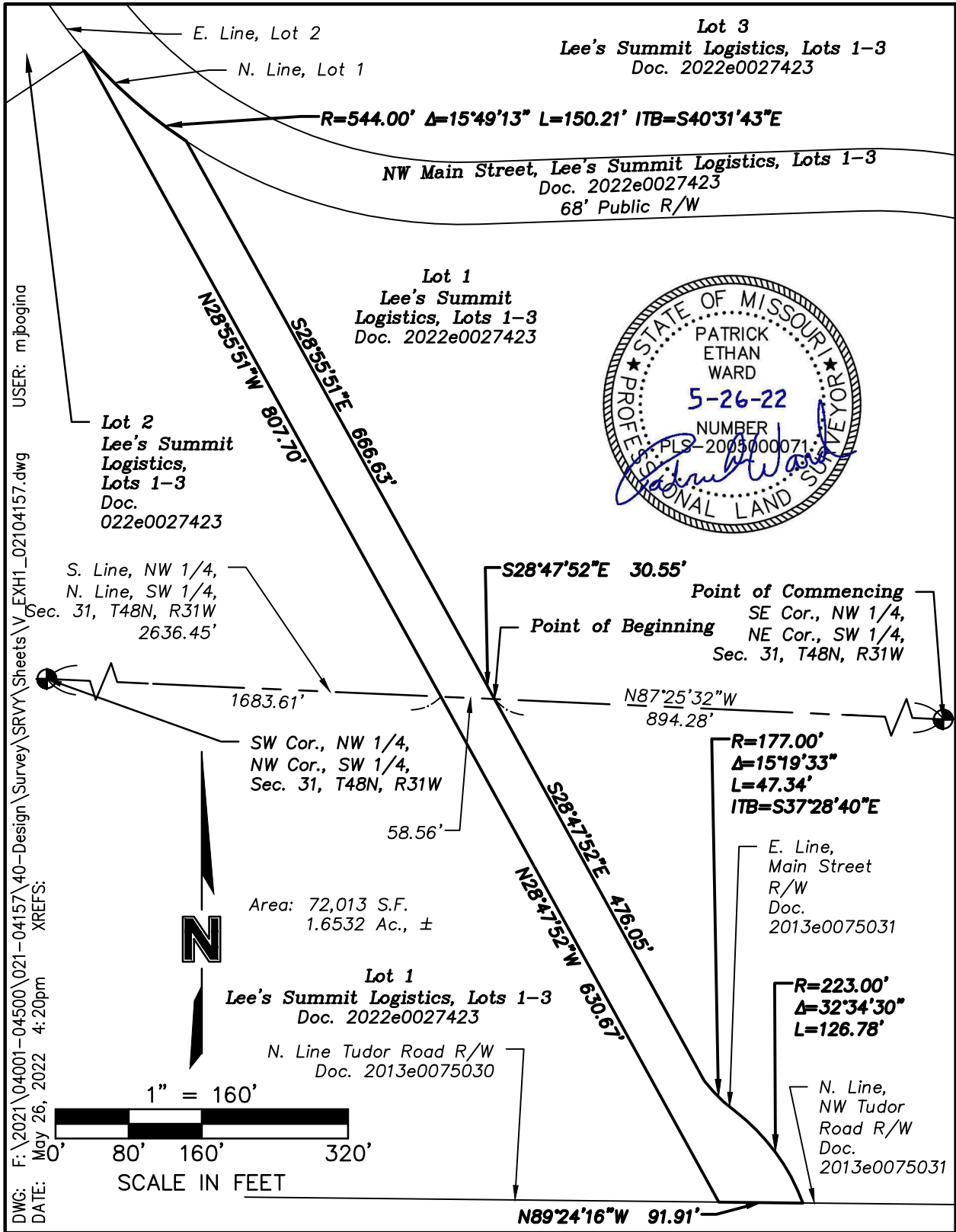
File No. 021-04157
Tudor Road
October 15, 2021
Revised May 26, 2022
V_EXH1_02104157



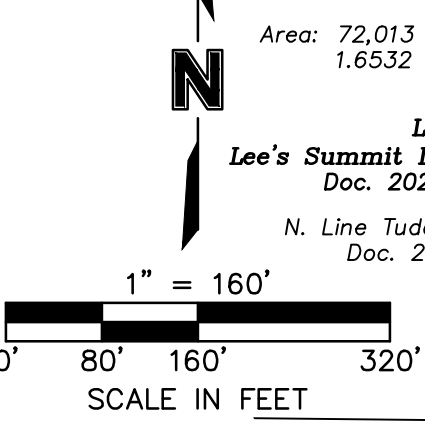
Right of Way Release Description

All that part of N. Main Street right of way, as now established, together with all that part of N. Main Street right of way, as established in Document 2013e0075031, all lying Lots 1 and 2, Lee's Summit Logistics, Lots 1-3, a subdivision in in the City of Lee's Summit, Jackson County, Missouri, all in the West Half of Section 31, Township 48 North, Range 31 West, described by Patrick Ethan Ward, MO PLS-20050071, of Olsson MOLC-366, on May 26, 2022, as follows:

COMMENCING at the Northeast corner of the Southwest Quarter of Section 31, Township 48 North, Range 31 West; thence North 87 degrees 25 minutes 32 seconds West, on the North line of said Southwest Quarter, a distance of 894.28 feet to a point on the East line of N. Main Street right of way, as now established, the POINT OF BEGINNING; thence South 28 degrees 47 minutes 52 seconds East, departing said North line, on said East line, a distance of 476.05 feet to a point on a non-tangent curve, said point also lying on the East line of N. Main Street right of way as established in Document 2013e0075031; thence in a Southeasterly direction, departing said East line, on said East line, and on a curve to the left whose initial tangent bears South 37 degrees 28 minutes 40 seconds East, having a radius of 177.00 feet, through a central angle of 15 degrees 19 minutes 33 seconds, an arc distance of 47.34 feet to a point of reverse curvature; thence in a Southeasterly direction, continuing on said East line and on a curve to the right, having a radius of 223.00 feet, through a central angle of 32 degrees 34 minutes 30 seconds, an arc distance of 126.78 feet to a point on a non-tangent line, said point also lying on the North line of NE Tudor Road right of way, as established in said Document 2013e0075031; thence North 89 degrees 24 minutes 16 seconds West, departing said East line, on the Westerly extension of said North line, a distance of 91.91 feet to a point on the West line of N. Main Street right of way, as now established, said point also lying on the North line of NW Tudor Road right of way, as established in Document 2013e0075030; thence North 28 degrees 47 minutes 52 seconds West, departing said Westerly extension and departing said North line, on said West line, a distance of 630.67 feet to a point on said North line of said Southwest Quarter, said line also being the South line of the Northwest Quarter of said Section 31; thence North 28 degrees 55 minutes 51 seconds West, departing said North and South lines, continuing on said West line, a distance of 807.70 feet to a point on a non-tangent curve, said point also lying on the East line of Lot 2 of Lee's Summit Logistics, Lots 1-3, a subdivision in the City of Lee's Summit, Jackson County, Missouri; thence in a Southeasterly direction, departing said West line, on said East line and on the North line of Lot 1 of said Lee's Summit Logistics, Lots 1-3 and on a curve to the left whose initial tangent bears South 40 degrees 31 minutes 43 seconds East, having a radius of 544.00 feet, through a central angle of 15 degrees 49 minutes 13 seconds, an arc distance of 150.21 feet to a point on a non-tangent line, said line also being the East line of N. Main Street right of way, as now established; thence South 28 degrees 55 minutes 51 seconds East, continuing on said East line, a distance of 666.63 feet to a point; thence South 28 degrees 47 minutes 52 seconds East, continuing on said East line, a distance of 30.55 feet to the POINT OF BEGINNING, containing 72,013 Square Feet or 1.6532 Acres, more or less.



DWG: F:\2021\04001-04500\021-04157\40-Design\Survey\SRV\Sheets\EXH1_02104157.dwg
 DATE: May 26, 2022 4:20pm
 USER: mjbogina
 XREFS:



PROJECT NO: 021-04157
 DRAWN BY: MJB
 DATE: 10/25/21 Rev. 05/26/22

Right of Way
 Release Exhibit


 7301 West 133rd Street
 Suite 200
 Overland Park, KS 66213-4750
 TEL 913.381.1170

EXHIBIT
 "A"
 (Page
 2 of 2)