



PARAGON STAR

Lee's Summit City Council

2 November 2017

Regional Destination

Mixed-Use Development

Best in Class

Projected 210-Acre,
\$400 Million Multi-
Phased Mixed Use
Development

Sports &
Recreation
Complex/Village-
Entertainment
District

New Regional
Infrastructure to
Support Development
in Lee's Summit's
Western Gateway

Sports & Recreation Complex

- 10 FIFA Regulation Fields & 3 Junior Fields – Artificial Turf & Lighted
- Clubhouse & Cantina w/ viewing decks overlooking championship field
- Major Trailhead to serve the Little Blue Trace and Rock Island Corridor Trails

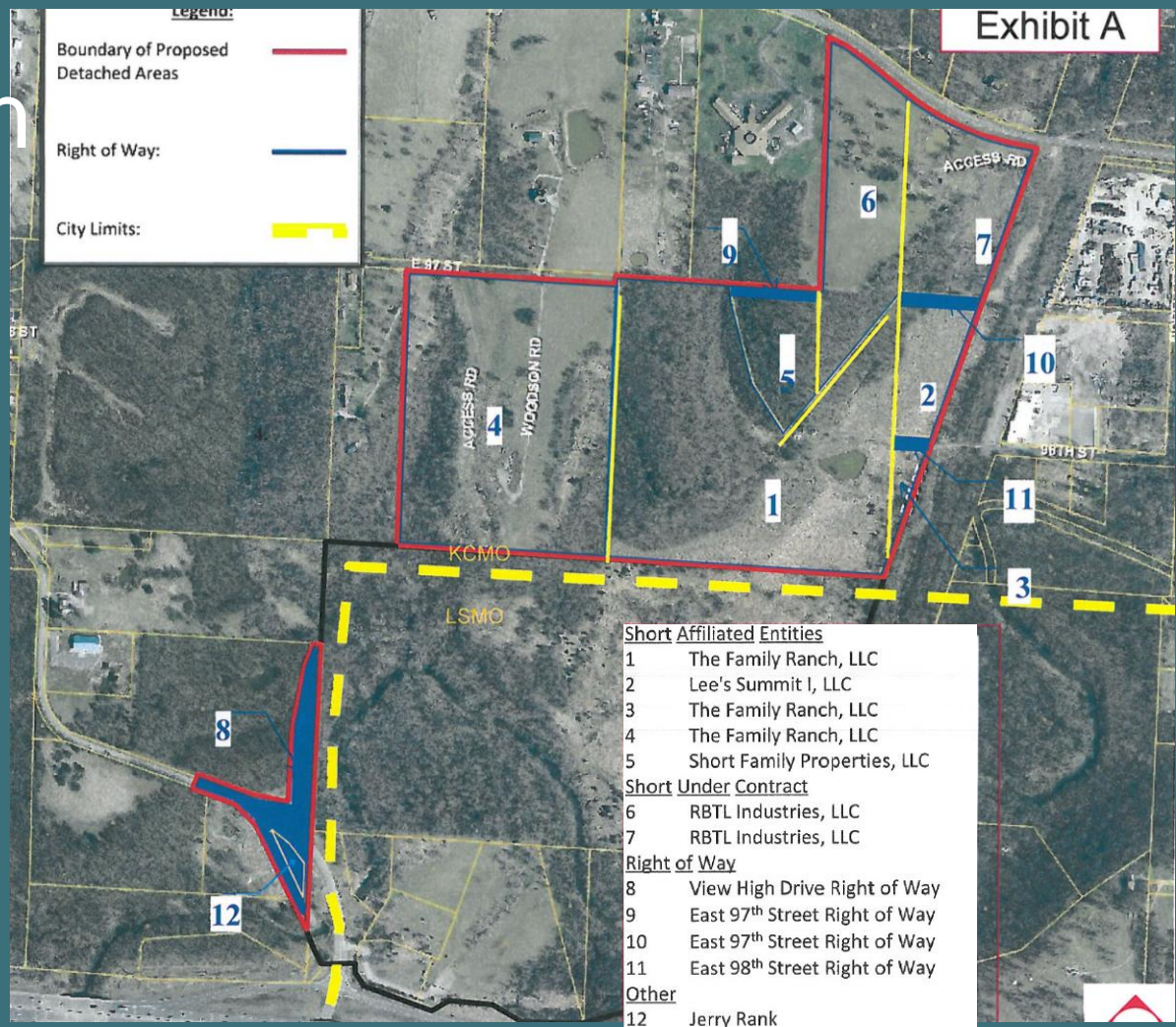


Entertainment District/Village

- Multi-Family Housing, Lodging, Office, Dining & Entertainment Venues:
 - ◆ Restaurant = 60,000 sq.ft.
 - ◆ Entertainment = 15,000 sq.ft.
 - ◆ Mercantile = 15,000 sq.ft.
 - ◆ Hotel 1 = 134 rooms
 - ◆ Hotel 2 = 98 rooms
 - ◆ Office = 95,000 sq.ft
- Outdoor Public Space w/ sports viewing & live music:
- Combination of first-to-market establishments & local favorites:



Annexation



New Regional Transportation Development District



Future Plans

- **Annexation** – Expansion of 96 additional acres to project site; Total project dimension = 210 acres
- **Village Expansion** – 2nd Hotel with 98 Rooms; 232 Total lodging rooms in Village
- **New Sports & Recreation Amenities** – Creation of additional amenities to include:
 - ◆ Fieldhouse w/ Fitness Facilities, Volleyball & Basketball Courts
 - ◆ Rock Climbing, Zip Lines, Ropes Course, Pickleball Courts, Bocce Courts, Outdoor Sand Volleyball Courts
 - ◆ 2 Additional FIFA Regulation Sports Fields
- **New Infrastructure**
 - ◆ Four lane diverging diamond interchange (DDI) at View High Drive & I-470
 - ◆ Paragon Parkway
 - ◆ View High Parkway extension/intersection at Bannister Road



The background of the slide is a solid teal color. Scattered across this background are numerous squares of varying sizes and shades, ranging from a dark teal to a forest green. These squares are positioned at various angles and locations, creating a textured, abstract pattern.

Thank You
Lee's Summit City Council