

LIGHT FIXTURE SCHEDULE						
FIXTURE TYPE	MANUFACTURER	CATALOG NUMBER	DESCRIPTION	LAMP NUMBER / DESCRIPTION	VOLTAGE	REMARKS
A	MCGRAW-EDISON	GALLEON LED GLEON SERIES	WALL-MOUNTED AREA LIGHT. LOW-PROFILE, ONE-PIECE DIE-CAST ALUMINUM HOUSING. LIGHT SQUARE LED ARRAYS - REFER TO LAMP DESCRIPTION FOR QUANTITY. IES TYPE IV FT DISTRIBUTION. INTEGRAL NON-DIMMING LED DRIVER.	SIX (6) LED LIGHT SQUARES. TYPE 14T TOTAL OF 333 WATTS, 35,815 LUMENS. 4000K CCT.	277/120	1
B	MCGRAW-EDISON	GALLEON LED GLEON SERIES	WALL-MOUNTED AREA LIGHT. LOW-PROFILE, ONE-PIECE DIE-CAST ALUMINUM HOUSING. LIGHT SQUARE LED ARRAYS - REFER TO LAMP DESCRIPTION FOR QUANTITY. IES TYPE IV W DISTRIBUTION. INTEGRAL NON-DIMMING LED DRIVER.	SIX (6) LED LIGHT SQUARES. TYPE 14W TOTAL OF 333 WATTS, 35,815 LUMENS. 4000K CCT.	277/120	1
D	MCGRAW-EDISON	GALLEON LED GWC SERIES	GALLEON WALL LUMINAIRE AREA LIGHT. LOW-PROFILE, ONE-PIECE DIE-CAST ALUMINUM HOUSING. LIGHT SQUARE LED ARRAYS - REFER TO LAMP DESCRIPTION FOR QUANTITY. IES TYPE IV W DISTRIBUTION. INTEGRAL NON-DIMMING LED DRIVER.	ONE (1) LED LIGHT SQUARE WITH 16 LEDS. TYPE 14W TOTAL OF 59 WATTS, 6,313 LUMENS. 4000K CCT.	277/120	1

REMARKS:
1. FURNISH WITH AND INSTALL ALL NECESSARY HARDWARE AND MOUNTING BRACKETS.

GENERAL NOTES (APPLICABLE TO ALL FIXTURES):
1) REFER TO SPECIFICATIONS FOR ADDITIONAL FIXTURE/DRIVER/BALLAST REQUIREMENTS.
2) LUMENS LISTED FOR LED FIXTURES ARE GENERALLY DELIVERED LUMENS UNLESS NOTED OTHERWISE.
3) ALL EXTERIOR LED FIXTURES ARE FULL CUTOFF UNLESS NOTED OTHERWISE.

PARKING LOT STATISTICS					
DESCRIPTION	MAINTAINED LIGHTING LEVELS			UNIFORMITY	
	AVG. (F.C.)	MAX. (F.C.)	MIN. (F.C.)	MAX. / MIN.	AVG. / MIN.
BUILDING PARKING LOT	2.8	7.0	0.8	8.8 : 1	3.5 : 1

NOTES:
1. NUMBERS INDICATE FOOTCANDLE LEVELS AT 3'-0" ABOVE GRADE.
2. CALCULATIONS PERFORMED USING VISUAL 2016.
3. THERE SHALL BE NO DIRECT ILLUMINATION OF RESIDENTIAL PROPERTIES ADJACENT TO THIS PROPERTY OR ACROSS PUBLIC RIGHT-OF-WAY.

McGraw-Edison

DESCRIPTION
The Galleon™ LED luminaire delivers exceptional performance in a highly scalable, low-profile design. Patented, high-efficiency AccuLED Optics™ system provides uniform and energy conscious illumination to walkways, parking lots, roadways, building areas and security lighting applications. IP66 rated and UL/CUL Listed for wet locations.

Catalog #	Type
Project	TYPE 'A', 'B'
Comments	Date
Prepared by	

SPECIFICATION FEATURES

Construction
Extruded aluminum driver enclosure thermally isolated from Light Squares for optimal thermal performance. Heavy-wall, die-cast aluminum end caps enclose housing and die-cast aluminum heat sinks. A unique, patent pending interlocking housing and heat sink provides scalability with superior structural rigidity. 3G vibration tested and rated. Optional tool-less hardware available for ease of entry into electrical chamber. Housing is IP66 rated.

Optics
Patented, high-efficiency injection-molded AccuLED Optics technology. Optics are precisely designed to shape the distribution maximizing efficiency and application spacing. AccuLED Optics create consistent distributions with the scalability to meet customized application requirements. Offered standard in 4000K (± 275K CCT) or 5000K CCT. Optional 3000K, 5000K and 6000K CCT.

Electrical
LED drivers are mounted to removable tray assembly for ease of maintenance. 120-277V 50/60Hz, 347V 60Hz or 480V 60Hz operation. 480V is compatible for use with 480V Wye systems only. Standard with 0-10V dimming. Shipped standard with Eaton proprietary circuit module designed to withstand 10kV of transient line surge. The Galleon LED luminaire is suitable for operation in -40°C to 40°C ambient environments. For applications with ambient temperatures exceeding 40°C, specify the HA (High Ambient) option. A knock-out enables round pole mounting.

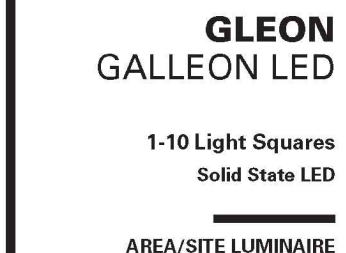
Finish
Housing finished in super durable TGIC polyester powder coat paint. 2.5 mil nominal thickness for superior protection against fade and wear. Heat sink is powder coated black. Standard housing colors include black, bronze, grey, white, dark platinum and graphite metallic. RAL and custom color matches available.

Mounting
STANDARD ARM MOUNT: Extruded aluminum arm includes internal bolt guides allowing for easy positioning of fixture during mounting. When mounting two or more luminaires at 90° and 120° apart, the EA extended arm may be required. Refer to the arm mounting requirement table.

Round pole mounting, specify wall mount bracket option. QUICK MOUNT ARM: Adapter is bolted directly to the pole. Quick mount arm slide into place on the adapter and is secured via two screws, facilitating quick and easy installation. The versatile, patent pending, quick mount arm accommodates multiple drill patterns ranging from 1-1/2" to 4-7/8". Removal of the door on the quick mount arm enables wiring of the fixture without having to access the driver compartment. A knock-out enables round pole mounting.

Finish
Housing finished in super durable TGIC polyester powder coat paint. 2.5 mil nominal thickness for superior protection against fade and wear. Heat sink is powder coated black. Standard housing colors include black, bronze, grey, white, dark platinum and graphite metallic. RAL and custom color matches available.

Warranty
Five-year warranty.



GLEON GALLEON LED
1-10 Light Squares
Solid State LED
AREA/SITE LUMINAIRE

McGraw-Edison

DESCRIPTION
The Galleon™ Wall LED luminaire's appearance is complementary with the Galleon area and site luminaire bringing a modern architectural style to lighting applications. Flexible mounting options accommodate wall surfaces in both an upward and downward configuration. The Galleon family of LED products deliver exceptional performance with patented, high-efficiency AccuLED Optics™, providing uniform and energy conscious lighting for parking lots, building and security lighting applications.

Catalog #	Type
Project	TYPE 'D'
Comments	Date
Prepared by	

SPECIFICATION FEATURES

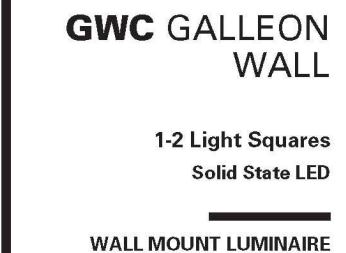
Construction
Driver enclosure thermally isolated from optics for optimal thermal performance. Heavy wall aluminum housing die-cast with integral external heat sinks to provide superior structural rigidity and an IP66 rated housing. Overall construction passes a 1.5G vibration test to ensure mechanical integrity. UPLIGHTING: Specify with the UPL option for inverted mount upright housing with additional protections to maintain IP rating.

Optics
Choice of thirteen patented, high-efficiency AccuLED Optics. The optics are precisely designed to shape the distribution maximizing efficiency and application spacing. AccuLED Optics create consistent distributions with the scalability to meet customized application requirements. Offered standard in 4000K (± 275K CCT) and minimum 70 CRI. Optional 3000K, 5000K and 6000K CCT. Greater than 90% lumen maintenance expected at 60,000 hours. Available in standard 1A drive current and optional 400mA, 800mA and 1200mA drive currents (nominal).

Mounting
Gasketed and zinc plated steel mounting attachment fits directly to 4" J-box or wall with the Galleon Wall "Hook-N-Lock" mechanism for quick installation. Secured with two captive corrosion resistant black oxide coated allen head set screws which are concealed but accessible from bottom of fixture.

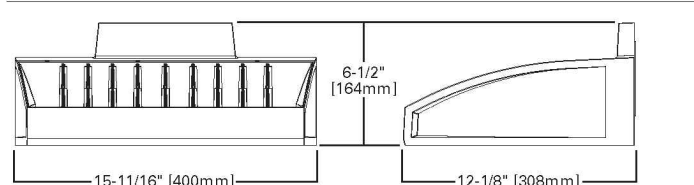
Finish
Housing finished in super durable TGIC polyester powder coat paint, 2.5 mil nominal thickness for superior protection against fade and wear. Standard colors include black, bronze, grey, white, dark platinum and graphite metallic. RAL and custom color matches available. Consult the McGraw-Edison Architectural Colors brochure for the complete selection.

Warranty
Five-year warranty.

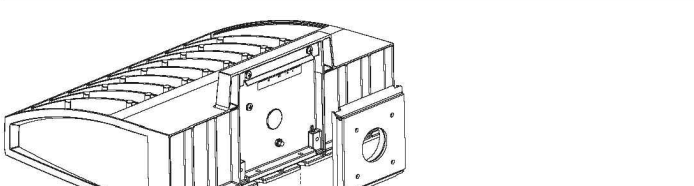


GWC GALLEON WALL
1-2 Light Squares
Solid State LED
WALL MOUNT LUMINAIRE

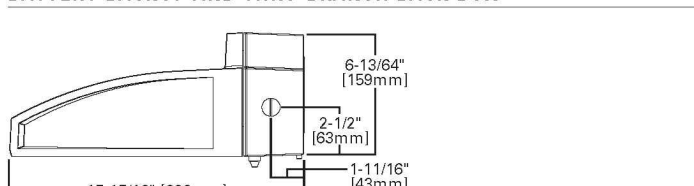
DIMENSIONS



HOOK-N-LOCK MOUNTING



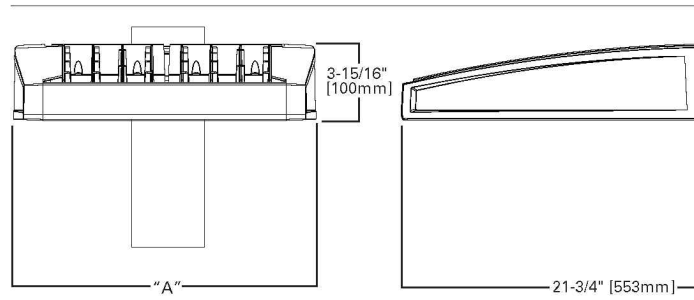
BATTERY BACKUP AND THRU-BRANCH BACK BOX



CERTIFICATION DATA
UL/cUL Listed
ISO 9001
LMV / LMV Compliant
3G Vibration Rated
IP66 Rated
DesignLights Consortium® Qualified*

ENERGY DATA
Electronic LED Driver
30:1 Power Factor
±20% Total Harmonic Distortion
120V 277V 60/60Hz
347V & 480V 60Hz
40°C Min. Temperature
40°C Max. Temperature
50°C Max. Temperature (HA Option)

DIMENSIONS



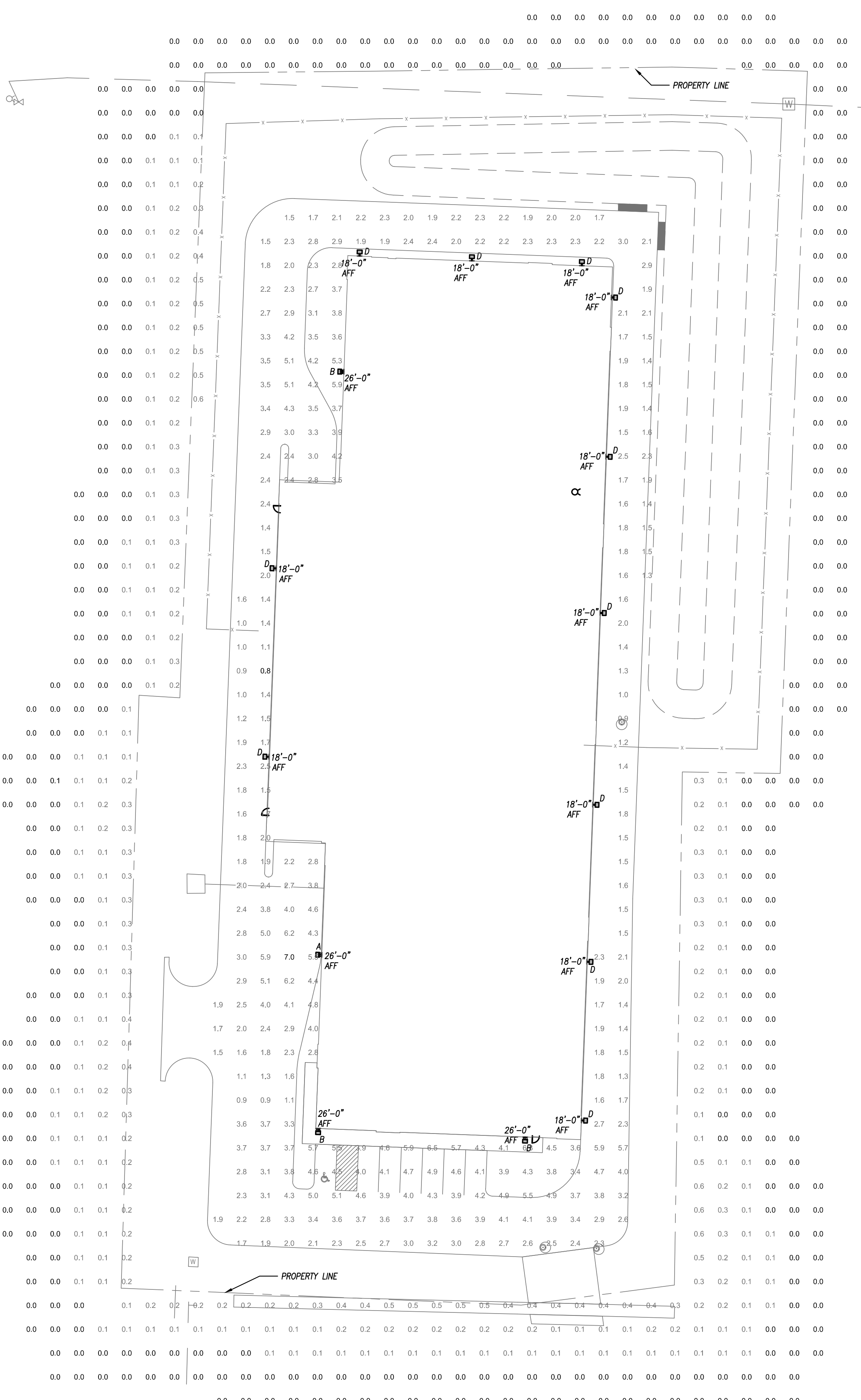
DIMENSION DATA

Number of Light Squares	"A" Width	"B" Standard Arm Length	"C" Optic Arm Length	Weight (lbs.)	EPA with Arm (lbs./ft.)
1-4	15-1/2" (394mm)	7" (178mm)	10" (254mm)	33 (15.0 kgs.)	0.96
5-8	21-5/8" (548mm)	7" (178mm)	10" (254mm)	44 (20.0 kgs.)	1.00
9-8	27-5/8" (702mm)	7" (178mm)	10" (254mm)	54 (24.5 kgs.)	1.07
9-10	33-3/4" (857mm)	7" (178mm)	10" (254mm)	63 (28.6 kgs.)	1.12

DRILLING PATTERN

TYPE "N"
2-1/2" (63.5mm) Diameter Hole
1-1/2" (38.1mm) Diameter Hole
1-1/4" (31.8mm) Diameter Hole
2-1/8" (63.5mm) Diameter Holes

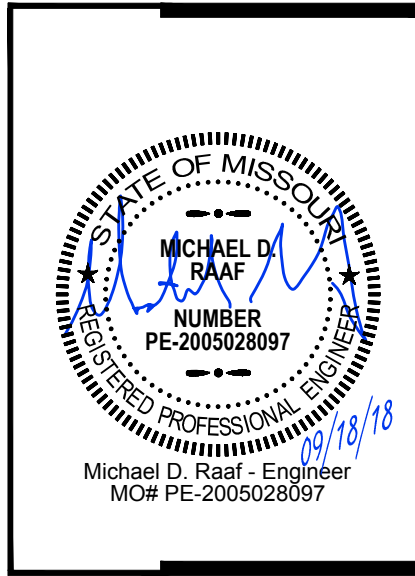
NOTES: 1. Optional arm length to be used when mounting two fixtures at 90° on a single pole. 2. EPA calculated with optional arm length.



SITE LIGHTING PHOTOMETRIC PLAN
1" = 30'-0"

JOB NUMBER	18034
ISSUE DATE	09/18/2018
REVISIONS	

Williams Spurgeon
Kuhl & Freshnack
Architects, Inc. © 2018



EXTRA SPACE - LEE'S SUMMIT
650 Oldham PKWY
Lee's Summit, MO
Heartland Self Storage

110 Armour Road North Kansas City, Missouri 64116 Tel: 816.300.4101 Fax: 816.300.4102



PEARSON KENT MCKINLEY RAUF ENGINEERS LLC
1330 W 96TH STREET ENCLVA, KS 66115
913.892.2600 WWW.PKMRNG.COM
MO State Certificate of Authority #E-2002020886

Missouri Certificate of Authority #2003011262

SITE LIGHTING PLAN
SL1.0