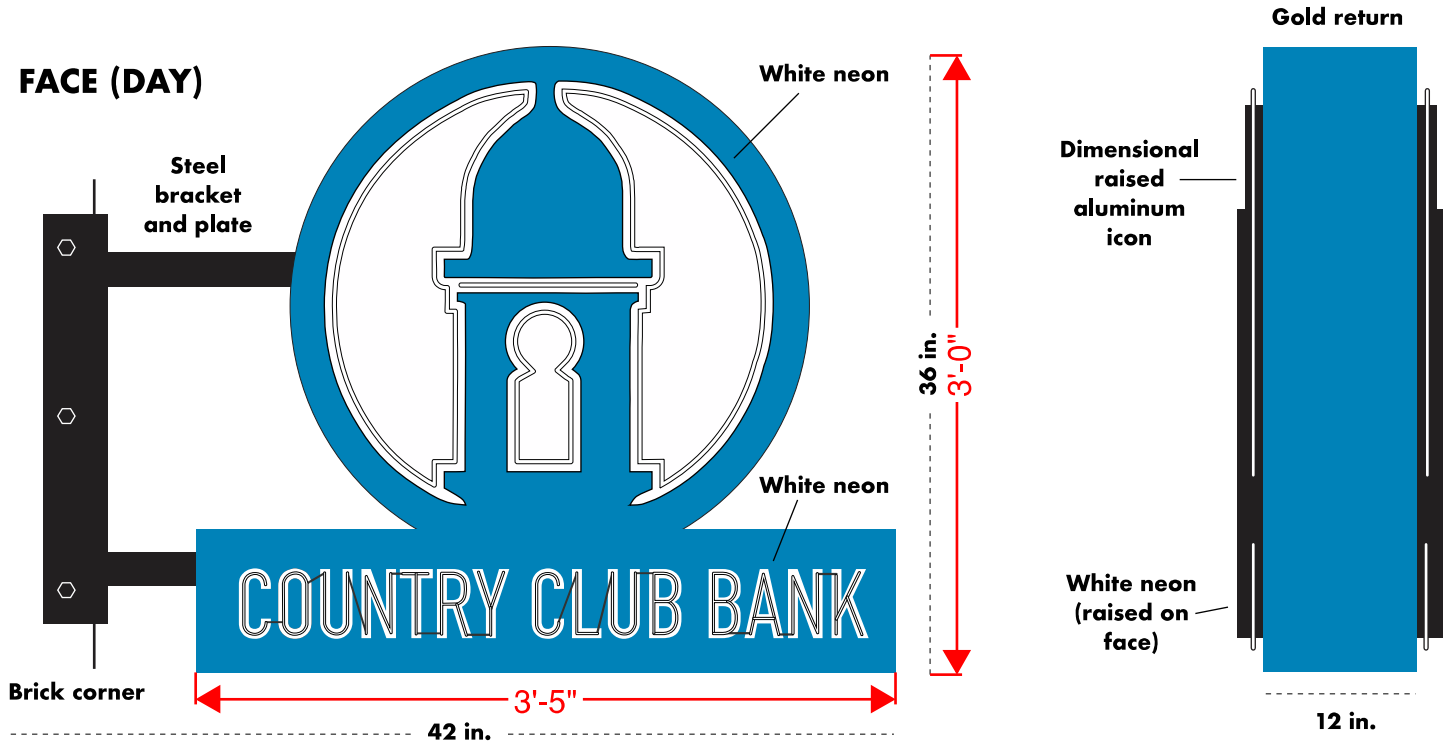


CONCEPT

EXTERIOR CORNER BLADE SIGN DESIGN (corner): Beautiful classic neon sign. Double-sided. Aluminum construction and two-tone powdercoated blue and white. White neon will outline icon and words.



All illustrations, concepts and descriptions are the property of Fossil Forge ©

CONCEPT

EXTERIOR CORNER BLADE SIGN DESIGN (corner): Beautiful classic neon sign. Double-sided. Aluminum construction and two-tone powdercoated blue and white. White neon will outline icon and words.



All illustrations, concepts and descriptions are the property of Fossil Forge ©

CONCEPT

SIGN SITE: Sign is located at 32 SE Third St. facade, facing south.

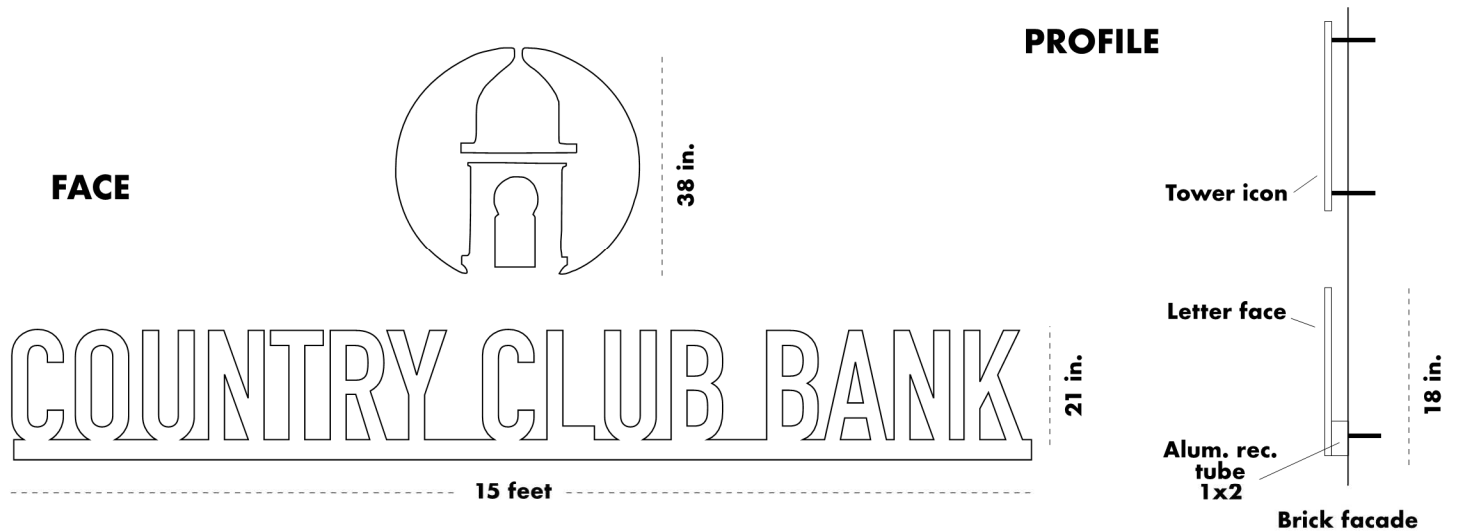
FACE



All illustrations, concepts and descriptions are the property of Fossil Forge ©

CONCEPT

EXTERIOR SIGN DESIGN (Douglas St. facade): Cut 1/4 in. aluminum letters mounted to rail. Powdercoated white. Letters are offset from wall creating better shadow and dimension. This sign is tighter to the wall because of its proximity to pedestrians and the ability to grab and pull on it. 12-14 fasteners used for installation on brick face.



All illustrations, concepts and descriptions are the property of Fossil Forge ©

CONCEPT

SIGN SITE: Sign is located at 32 SE Third St. on the Douglas St. facade, facing east.

FACE



All illustrations, concepts and descriptions are the property of Fossil Forge ©

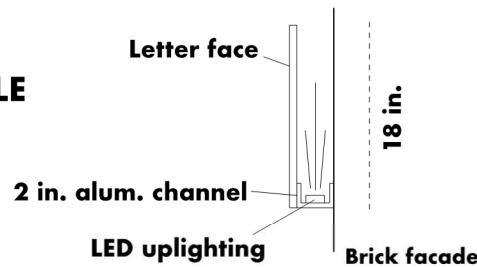
CONCEPT

EXTERIOR SIGN DESIGN (Third St. facade): Cut 1/4 in. aluminum letters mounted to rail. Powdercoated white. Letters are offset from wall creating better shadow and dimension. LED uplighting is hidden behind letters creating a silhouette at night. 8-10 fasteners used for installation on brick face.

FACE



PROFILE



All illustrations, concepts and descriptions are the property of Fossil Forge ©

CONCEPT

SIGN SITE: Sign is located at 32 SE Third St. facade, facing south.

FACE



All illustrations, concepts and descriptions are the property of Fossil Forge ©