

# PROJECT SCHEDULE

SIGN TYPE/ DESCRIPTION:	QTY.:	PG.
D. INTERNALLY ILLUMINATED FACE-LIT CHANNEL LETTERS W/ BACKGROUND PANEL ON WIREWAY (EYEMART)	ONE (1)	8

PROJECT:

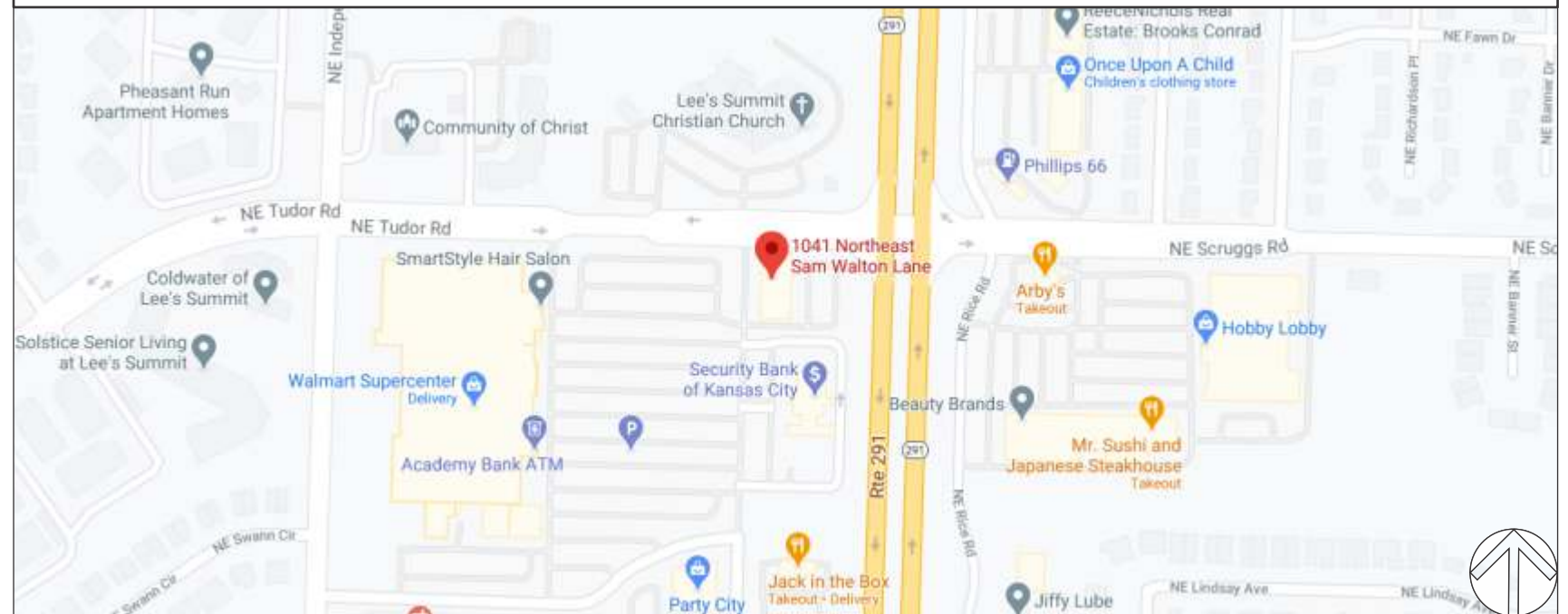


**WALMART SUPERCENTER**  
**1041 NE SAM WALTON LANE**  
**LEE'S SUMMIT, MO 64086**

# REVISIONS

#	DATE	DB	NOTES
R1	11/10/2020	MAF	ADDED "EYE EXAMS" SIGN TO STOREFRONT; CHANGED SIDE "OPTOMETRIST" SIGN TO "EYE EXAMS".
R2	1/12/2021	MAF	REDUCED SIZE OF BANNER TO UNDER 40SF.
R3	1/13/2021	MAF	BACKGROUND PANELS & RETURNS NOW OFF-WHITE IN COLOR; RACEWAYS ARE NOW WIREWAYS.
R4	1/29/2021	MAF	UPDATED W/ ACTUAL STORE/OFFICE HOURS; NEW DR. LOGO.
R5	2/8/2021	MAF	ADDED PARKING SIGNAGE.

## VICINITY MAP



CLIENT & LOCATION



WALMART SUPERCENTER  
 1041 NE SAM WALTON LANE  
 LEE'S SUMMIT, MO 64086

LEAD NO.

195389 R5

SALESMAN

S. ALTSHULER

DATE

11/9/2020

DRAWN BY

MAF

REVIEWED BY

SEG. NO.

REVISION

SHEET NO.

1 of 35

REAR ELEVATION - FACING WALMART SUPERCENTER

SCALE: N.T.S.



**TRIANGLE**  
SIGN SERVICES

CLIENT & LOCATION

**EYEMART**

WALMART SUPERCENTER  
1041 NE SAM WALTON LANE  
LEE'S SUMMIT, MO 64086

LEAD NO.  
195389 R5

DATE  
11/9/2020

REVIEWED BY

REVISION

SHEET NO.

SALESMAN  
S. ALTSHULER

DRAWN BY  
MAF

SEG. NO.

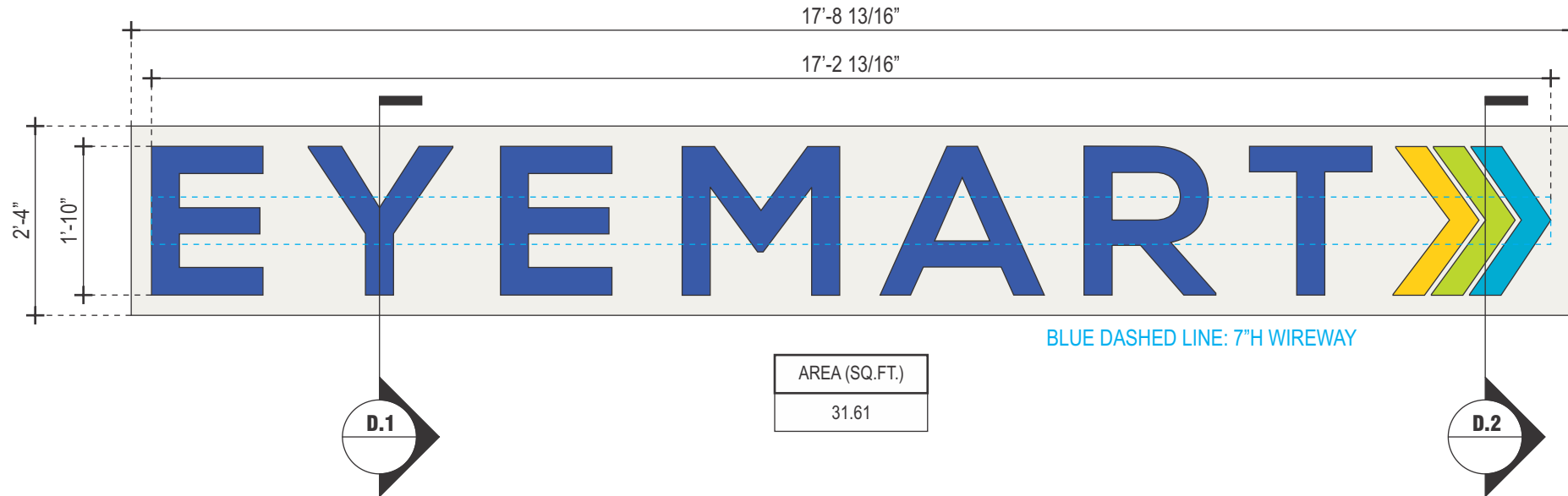
4 of 35

D

INTERNALLY ILLUMINATED FACE-LIT CHANNEL LETTERS W/ BACKGROUND PANEL ON WIREWAY

SCALE: 1/2" = 1'-0"

QTY.: ONE (1)

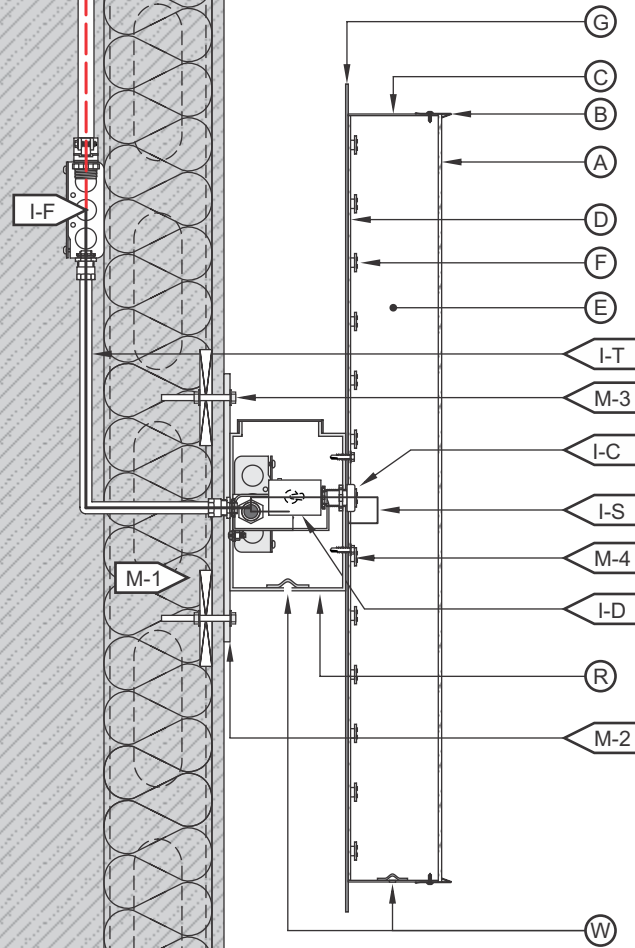


	<b>CLIENT &amp; LOCATION</b> <b>EYEMART</b>	WALMART SUPERCENTER 1041 NE SAM WALTON LANE LEE'S SUMMIT, MO 64086	LEAD NO. 195389 R5	DATE 11/9/2020	REVIEWED BY	REVISION	SHEET NO. 8 of 35
			SALESMAN S. ALTSHULER	DRAWN BY MAF	SEG. NO.		

**A.1 B.1 C.1 D.1**

SCALE: N.T.S.

**FACE-LIT CHANNEL LETTERS / LED ILLUMINATION / EXTERIOR INSTALL / WIREWAY MOUNTED / BG PANEL**



<b>(A) FACE</b>	
MATERIAL:	3/16" WHITE PLEX #2447.
VINYL:	3M PERFORATED DAY/NIGHT EFFECT; 1ST SURFACE
COLOR:	PAINT TO MATCH PMS 2935U
<b>(B) TRIMCAP</b>	
SIZE / FINISH	1" / MATCH RETURNS.
<b>(C) RETURN</b>	
DEPTH:	5".
MATERIAL:	0.040" ALUM.
COLOR/ FINISH:	OFF-WHITE/ SATIN.
<b>(D) BACK</b>	
MATERIAL:	3MM ACM.
COLOR/ FINISH:	OFF-WHITE/ SATIN.
<b>(E) INSIDE OF CAN</b>	
COLOR:	PRE-COAT WHITE.
<b>(F) ILLUMINATION</b>	
TYPE/COLOR:	LEDS/6500K WHITE
<b>(G) BG PANEL</b>	
MATERIAL:	1/8" ALUMINUM
COLOR/FINISH:	OFF-WHITE/SATIN
	OFF-WHITE
	PMS 2935U

<b>(I) WIRING</b>	
I-C:	BUSHING.
I-D:	DISCONNECT SWITCH @ SIDE OF RACEWAY.
I-F:	SEE ELEC. NOTE. 120V PRIMARY IN J-BOX BY OTHERS.
I-T:	14awg FEED IN 1/2"Ø SEAL-TITE w/ 1/2" CONNECTORS.
I-J:	STANDARD JUNCTION BOX.
I-H:	W.P. BOX @ DISCONNECT SWITCH.
I-P:	LIQUID TIGHT CONNECTOR.
I-S:	U.L. APPROVED CLASS II LOW VOLTAGE WIRE.
	(ALL CONNECTIONS TO BE IN WATERPROOF BOXES).
<b>(J) POWER SUPPLY</b>	
TYPE:	LED POWER SUPPLY HOUSE IN RACEWAY.
VOLTAGE:	120V.
<b>(R) WIREWAY</b>	
MATERIAL:	7" x 4" ALUM. LED EXTRUSION RACEWAY, TOP ACCESS.
COLOR/ FINISH:	PAINT TO MATCH EXISTING FASCIA FINISH.
<b>(M) MOUNTING</b>	
M-1:	SEE MOUNTING NOTE. REQ'D. BLOCKING BY OTHERS.
M-2:	MOUNTING BARS 2"W. x 1/4" ALUM. w/ 3/4"Ø MNTG. HOLE.
M-3:	3/8"Ø ALLTHREAD, NUT & WASHERS INTO BLOCKING BEYOND.
M-4:	SELF-TAPPING SCREW.
<b>(W) WEEP HOLE</b>	
TYPE:	1/4"Ø w/ COVERS.

**120V  
INSTALL**

1. CUSTOMER G.C. TO PROVIDE ADEQUATE WOOD OR MTL. BLOCKING IN CORRELATION W/ FACADE FRAMING AS REQUIRED.
2. INSTALLER IS TO V.I.F. & PROVIDE THE PROPER NON-CORROSIVE MOUNTING HARDWARE TO ENSURE SAFE INSTALLATION.
3. ALL EXTERIOR FACADE PENETRATIONS TO BE WATERTIGHT.
4. INSTALLATION TO MEET CURRENT N.E.C., U.L. & LOCAL CODES. LOCATION OF THE DISCONNECT SWITCH AFTER INSTALLATION SHALL COMPLY WITH ARTICLE 600.6(A) (1) OF THE NATION ELECTRICAL CODE

**ELECTRICAL**

1. ALL ELECTRICAL COMPONENTS TO BE U.L. APPROVED.
2. CUSTOMER IS RESPONSIBLE FOR ONE (1) 120v/ 20a DEDICATED CIRCUIT w/ GROUND PER SIGN TO WITHIN 6' OF SIGN.
3. THIS SIGN IS INTENDED TO BE INSTALLED IN ACCORDING W/ THE REQUIREMENTS OF ARTICLE 600 OF THE NATIONAL ELECTRICAL CODE AND/OR OTHER APPLICABLE LOCAL CODES. THIS INCLUDES PROPER GROUNDING & BONDING OF THE SIGN.

**FABRICATOR**

1. PLACEMENT OF LIGHTING ELEMENTS FOR OPTIMUM ILLUMINATION OF SIGN TO BE DETERMINED IN PRODUCTION.
2. MANUFACTURER & U.L. LABELS TO BE APPLIED & VISIBLE FROM THE GROUND. LOCATED ON THE LAST CHANNEL LETTER OR END OF THE SIGN BOX/FREESTANDING SIGN



**ALL ELECTRICAL COMPONENTS ARE TO BE UL APPROVED**

**TRIANGLE  
SIGN SERVICES**

CLIENT & LOCATION

**EYEMART**

WALMART SUPERCENTER  
1041 NE SAM WALTON LANE  
LEE'S SUMMIT, MO 64086

LEAD NO.  
195389 R5

SALESMAN  
S. ALTSHULER

DATE  
11/9/2020

DRAWN BY  
MAF

REVIEWED BY

SEG. NO.

REVISION

SHEET NO.

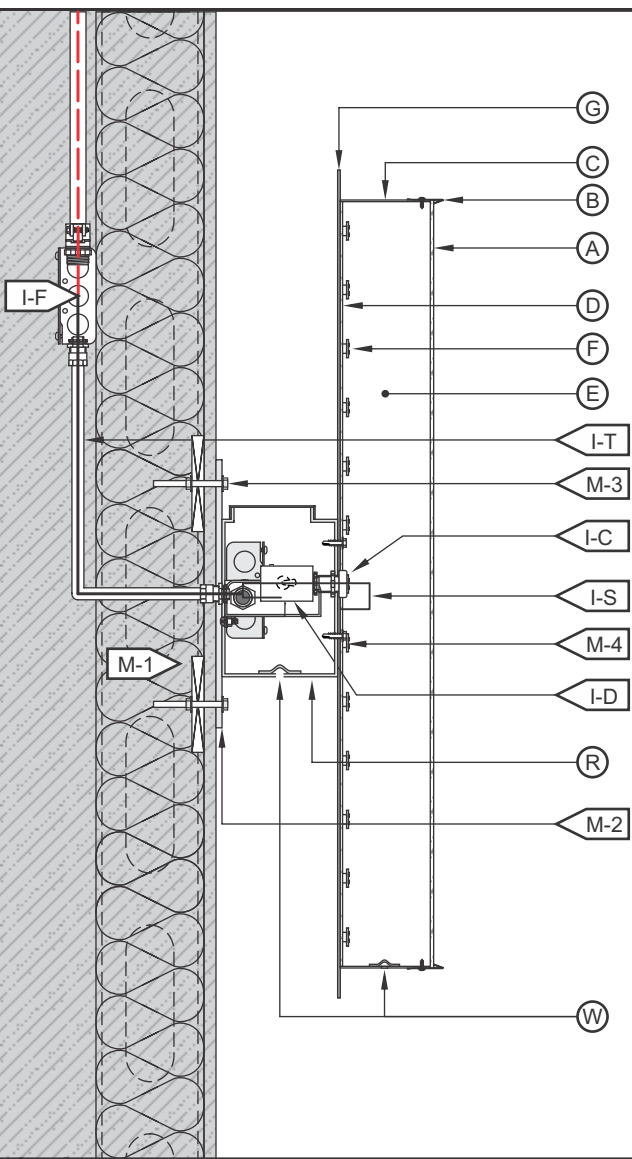
9 of 35

**A.2 D.2**

SCALE: N.T.S.



**"LOGO" FACE-LIT CHANNEL LETTER / LED ILLUMINATION / EXTERIOR INSTALL / WIREWAY MOUNTED / BG PANEL**



<b>(A) FACE</b>	
MATERIAL:	3/16" WHITE PLEX #2447.
VINYL:	TRANSLUCENT
COLOR:	PRINT TO MATCH PMS 2935U, 115U, 312U & 381U
<b>(B) TRIMCAP</b>	
SIZE / FINISH	1" / MATCH RETURNS.
<b>(C) RETURN</b>	
DEPTH:	5".
MATERIAL:	0.040" ALUM.
COLOR/ FINISH:	OFF-WHITE/ SATIN.
<b>(D) BACK</b>	
MATERIAL:	3MM ACM.
COLOR/ FINISH:	OFF-WHITE/ SATIN.
<b>(E) INSIDE OF CAN</b>	
COLOR:	PRE-COAT WHITE.
<b>(F) ILLUMINATION</b>	
TYPE/COLOR:	LEDS/6500K WHITE
<b>(G) BG PANEL</b>	
MATERIAL:	1/8" ALUMINUM
COLOR/FINISH:	OFF-WHITE/SATIN

<b>(I) WIRING</b>	
I-C:	BUSHING.
I-D:	DISCONNECT SWITCH @ SIDE OF RACEWAY.
I-F:	SEE ELEC. NOTE. 120V PRIMARY IN J-BOX BY OTHERS.
I-T:	14awg FEED IN 1/2"Ø SEAL-TITE w/ 1/2" CONNECTORS.
I-J:	STANDARD JUNCTION BOX.
I-H:	W.P. BOX @ DISCONNECT SWITCH.
I-P:	LIQUID TIGHT CONNECTOR.
I-S:	U.L. APPROVED CLASS II LOW VOLTAGE WIRE.
(ALL CONNECTIONS TO BE IN WATERPROOF BOXES).	
<b>(J) POWER SUPPLY</b>	
TYPE:	LED POWER SUPPLY HOUSE IN RACEWAY.
VOLTAGE:	120V.
<b>(R) WIREWAY</b>	
MATERIAL:	7" x 4" ALUMINUM EXTRUSION, TOP ACCESS.
COLOR/ FINISH:	MATCH FASCIA.
<b>(M) MOUNTING</b>	
M-1:	SEE MOUNTING NOTE. REQ'D. BLOCKING BY OTHERS.
M-2:	MOUNTING BARS 2"W. x 1/4" ALUM. w/ 3/4"Ø MNTG. HOLE.
M-3:	3/8"Ø ALLTHREAD, NUT & WASHERS INTO BLOCKING BEYOND.
M-4:	SELF-TAPPING SCREW.
<b>(W) WEEP HOLE</b>	
TYPE:	1/4"Ø w/ COVERS.

**120V**

- INSTALL**
1. CUSTOMER G.C. TO PROVIDE ADEQUATE WOOD OR MTL. BLOCKING IN CORRELATION W/ FACADE FRAMING AS REQUIRED.
  2. INSTALLER IS TO V.I.F. & PROVIDE THE PROPER NON-CORROSIVE MOUNTING HARDWARE TO ENSURE SAFE INSTALLATION.
  3. ALL EXTERIOR FACADE PENETRATIONS TO BE WATERTIGHT.
  4. INSTALLATION TO MEET CURRENT N.E.C., U.L. & LOCAL CODES. LOCATION OF THE DISCONNECT SWITCH AFTER INSTALLATION SHALL COMPLY WITH ARTICLE 600.6(A) (1) OF THE NATION ELECTRICAL CODE

**ELECTRICAL**

1. ALL ELECTRICAL COMPONENTS TO BE U.L. APPROVED.
2. CUSTOMER IS RESPONSIBLE FOR ONE (1) 120v/ 20a DEDICATED CIRCUIT w/ GROUND PER SIGN TO WITHIN 6' OF SIGN.
3. THIS SIGN IS INTENDED TO BE INSTALLED IN ACCORDING W/ THE REQUIREMENTS OF ARTICLE 600 OF THE NATIONAL ELECTRICAL CODE AND/OR OTHER APPLICABLE LOCAL CODES. THIS INCLUDES PROPER GROUNDING & BONDING OF THE SIGN.

**FABRICATOR**

1. PLACEMENT OF LIGHTING ELEMENTS FOR OPTIMUM ILLUMINATION OF SIGN TO BE DETERMINED IN PRODUCTION.
2. MANUFACTURER & U.L. LABELS TO BE APPLIED & VISIBLE FROM THE GROUND. LOCATED ON THE LAST CHANNEL LETTER OR END OF THE SIGN BOX/FREESTANDING SIGN



**ALL ELECTRICAL COMPONENTS ARE TO BE UL APPROVED**



WALMART SUPERCENTER  
1041 NE SAM WALTON LANE  
LEE'S SUMMIT, MO 64086

LEAD NO. 195389 R5	DATE 11/9/2020	REVIEWED BY	REVISION	SHEET NO.
SALESMAN S. ALTSHULER	DRAWN BY MAF	SEG. NO.		