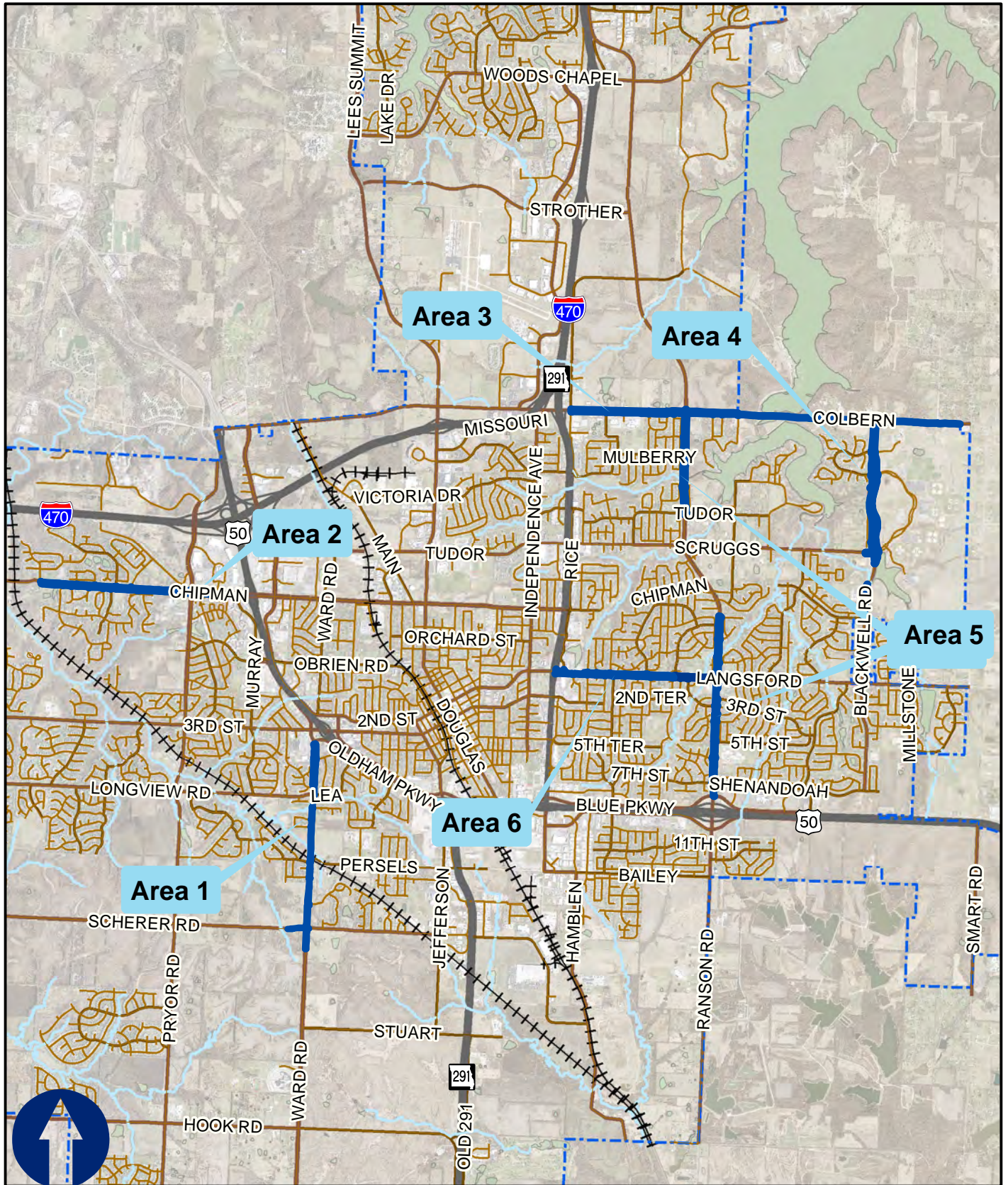


Lee's Summit Arterial Curb Replacement #39032272



Overview

 **Curb Replacement**

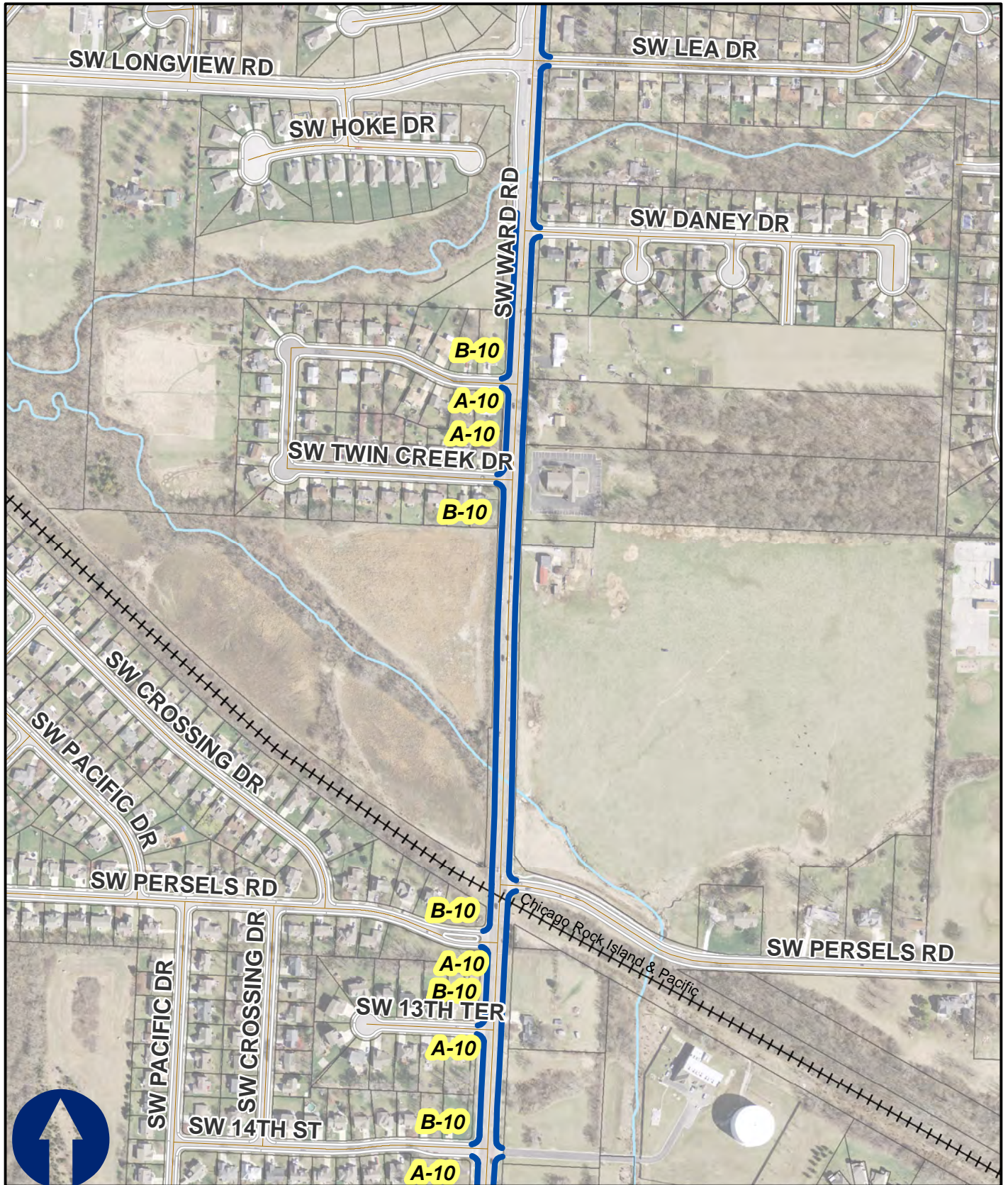
Lee's Summit Arterial Curb Replacement #39032272



Area 1a - Ward Rd
Oldham - Longview



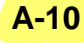


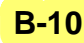


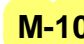
- Curb_Replace
- Sidewalk Replace
- D Drive Approach
- A Type A Ramp
- B Type B Ramp
- M Type M Ramp
- A-10 Type A-10 Ramp
- B-10 Type B-10 Ramp
- M-10 Type M-10 Ramp

Lee's Summit Arterial Curb Replacement #39032272



Area 1b - Ward Rd



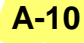


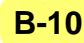


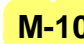
Longview - 14th ST

- | | | |
|--|--|--|
|  Curb_Replace |  Type A Ramp |  Type A-10 Ramp |
|  Sidewalk Replace |  Type B Ramp |  Type B-10 Ramp |
|  Drive Approach |  Type M Ramp |  Type M-10 Ramp |

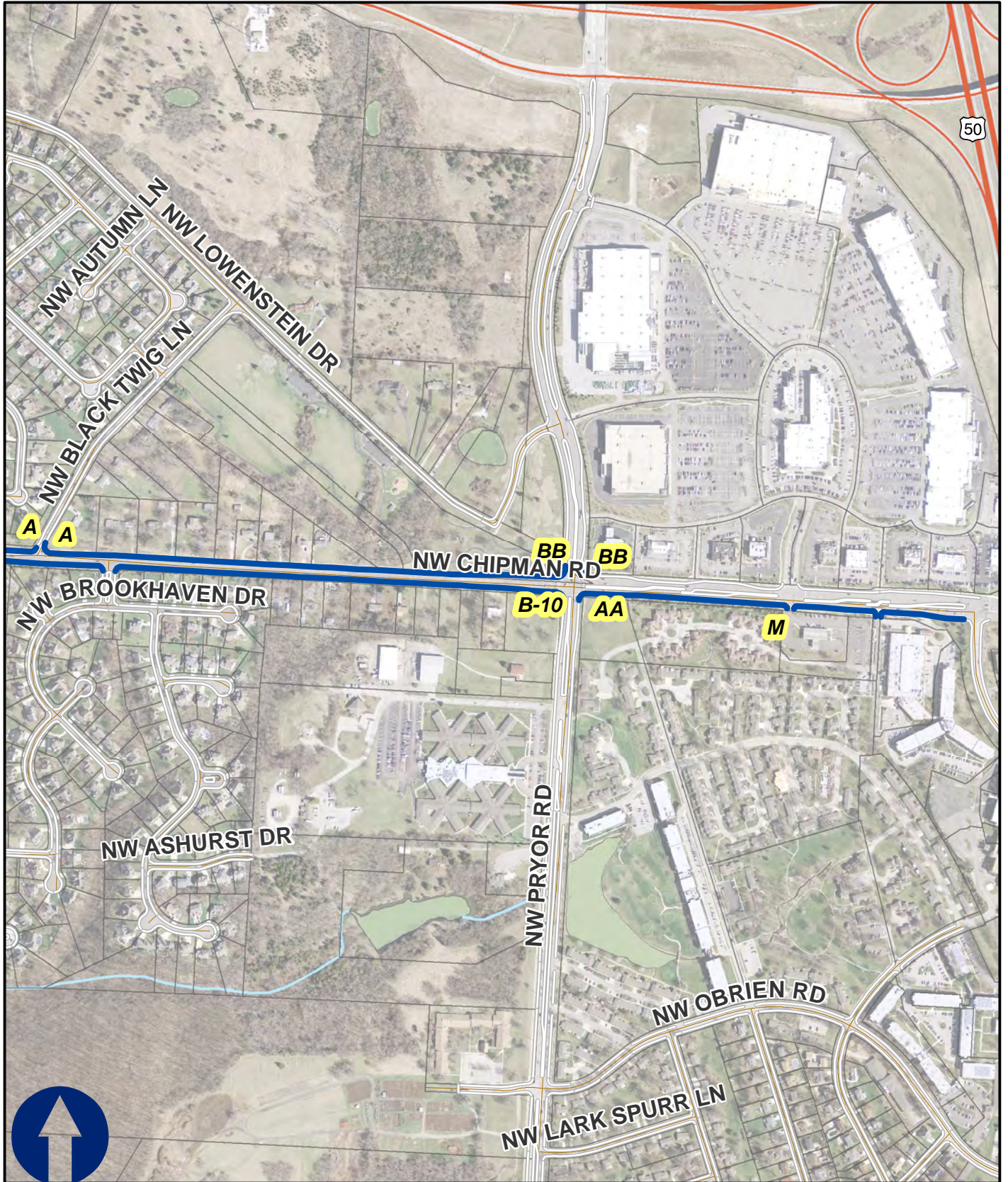
Lee's Summit Arterial Curb Replacement #39032272



Area 1c - Ward Rd
14th ST - Scherer

- | | | |
|--|--|--|
|  Curb_Replace |  Type A Ramp |  Type A-10 Ramp |
|  Sidewalk Replace |  Type B Ramp |  Type B-10 Ramp |
|  Drive Approach |  Type M Ramp |  Type M-10 Ramp |

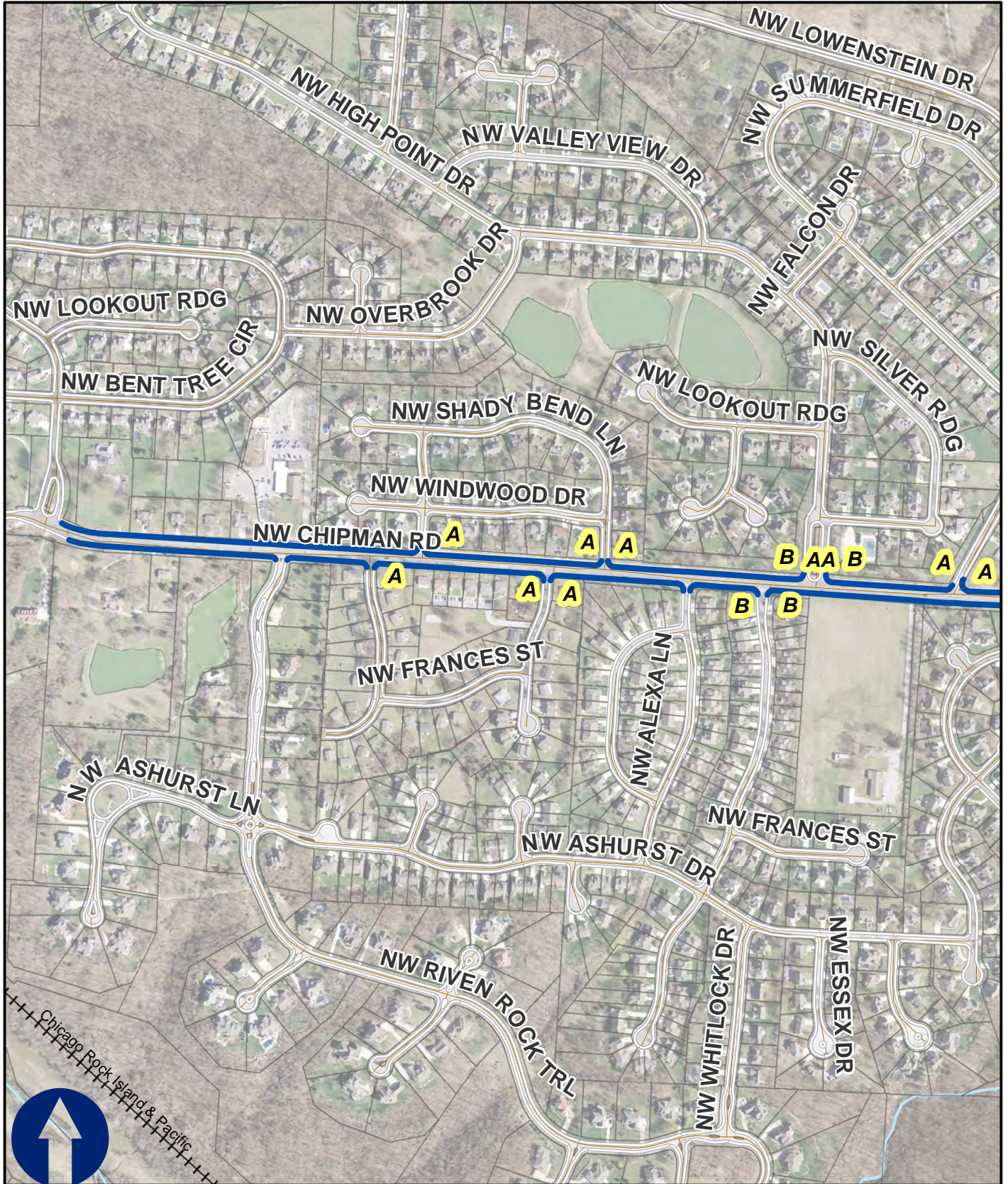
Lee's Summit Arterial Curb Replacement #39032272



Area 2a - Chipman RD
Murray - Blacktwig

- Curb_Replace
- Sidewalk Replace
- D Drive Approach
- A** Type A Ramp
- B** Type B Ramp
- M** Type M Ramp
- A-10** Type A-10 Ramp
- B-10** Type B-10 Ramp
- M-10** Type M-10 Ramp

Lee's Summit Arterial Curb Replacement #39032272

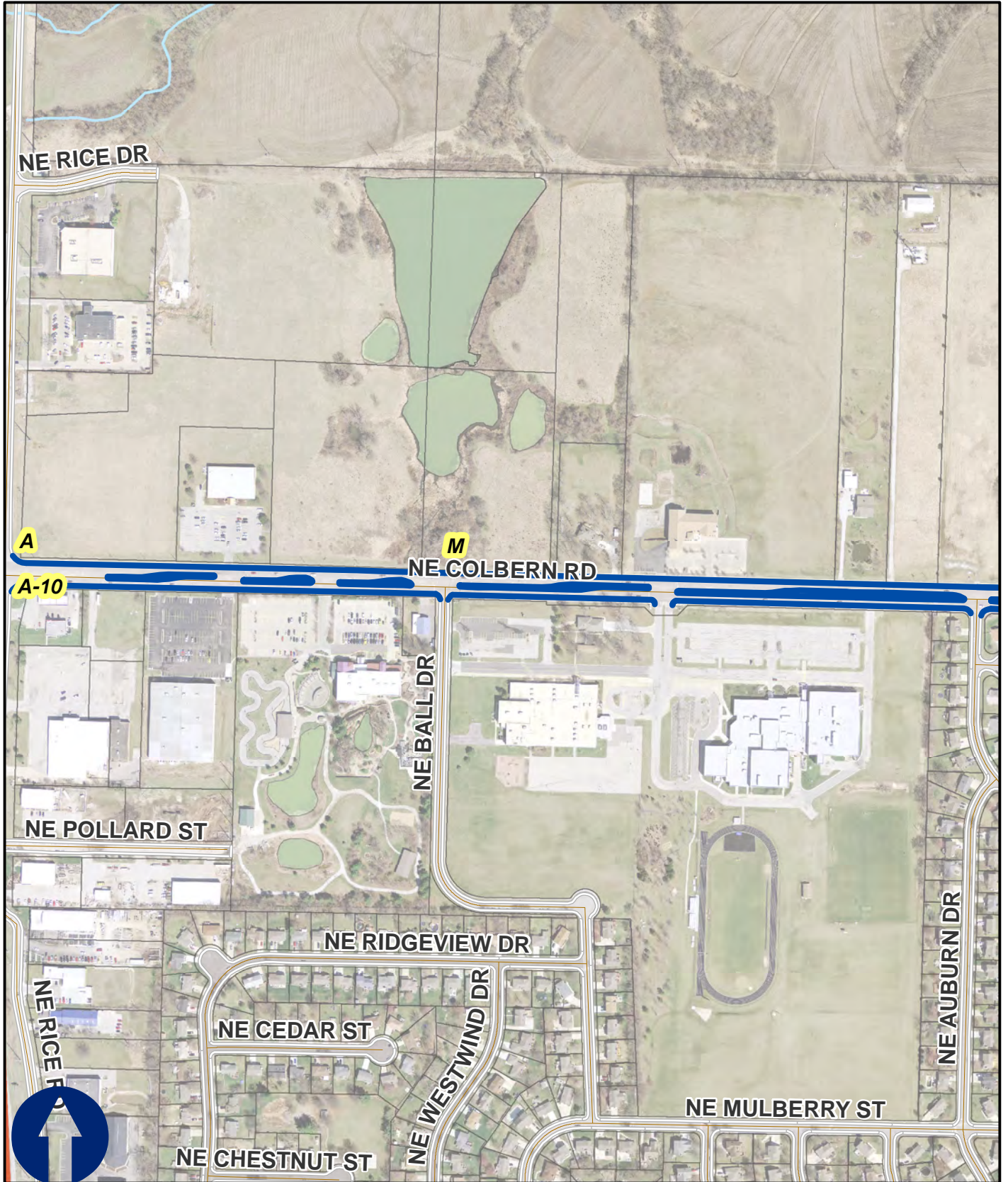


Area 2b - Chipman RD

Blacktwig - Benttree

- Curb_Replace
- Sidewalk Replace
- D Drive Approach
- A Type A Ramp
- B Type B Ramp
- M Type M Ramp
- A-10 Type A-10 Ramp
- B-10 Type B-10 Ramp
- M-10 Type M-10 Ramp

Lee's Summit Arterial Curb Replacement #39032272



Area 3a - Colbern RD
Rice - W. Burgandy

- Curb_Replace
- Sidewalk Replace
- D Drive Approach
- A Type A Ramp
- B Type B Ramp
- M Type M Ramp
- A-10 Type A-10 Ramp
- B-10 Type B-10 Ramp
- M-10 Type M-10 Ramp

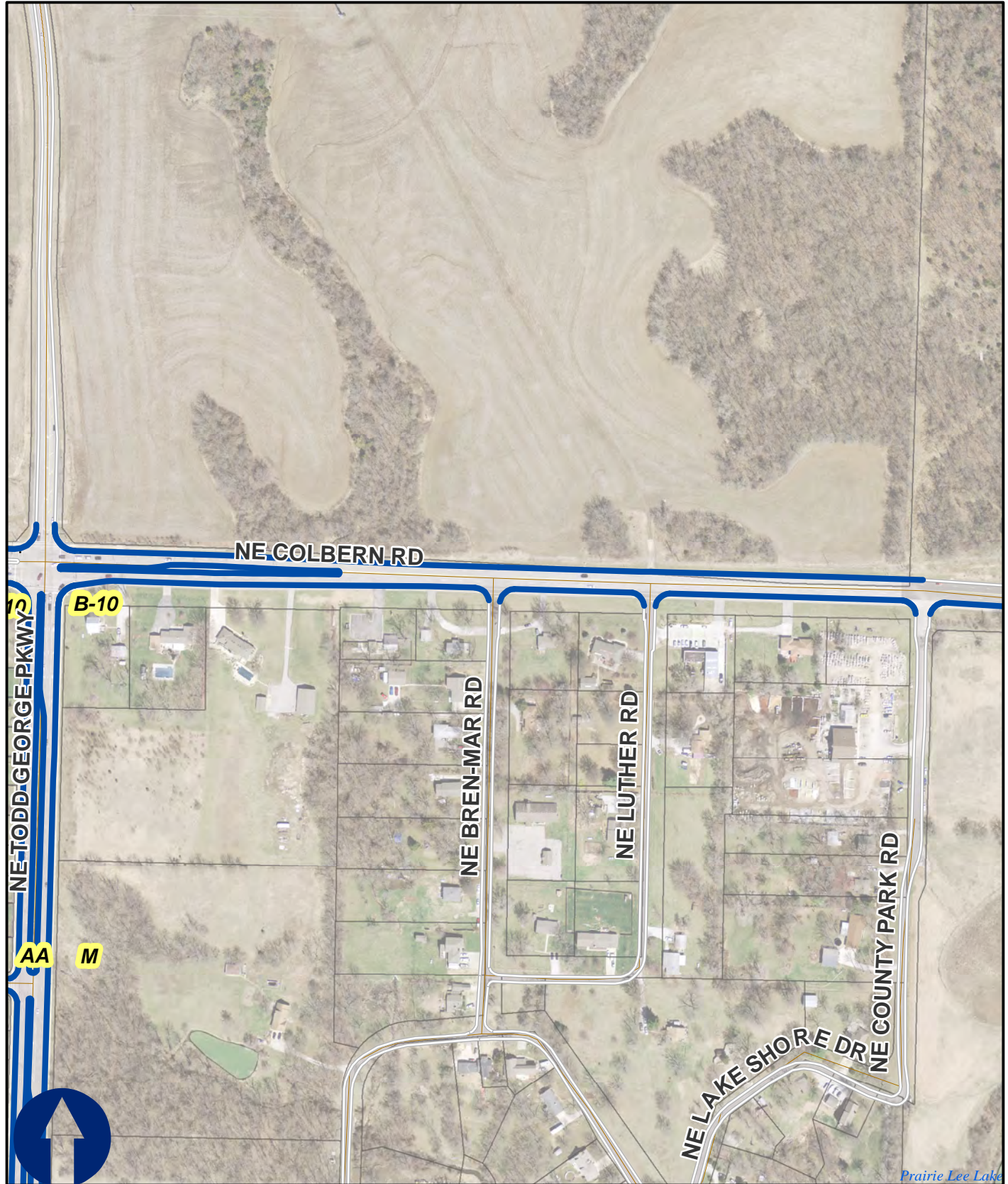
Lee's Summit Arterial Curb Replacement #39032272



Area 3b - Colbern RD
W. Burgandy - Todd George

- Curb_Replace
- Sidewalk Replace
- D Drive Approach
- A Type A Ramp
- B Type B Ramp
- M Type M Ramp
- A-10 Type A-10 Ramp
- B-10 Type B-10 Ramp
- M-10 Type M-10 Ramp

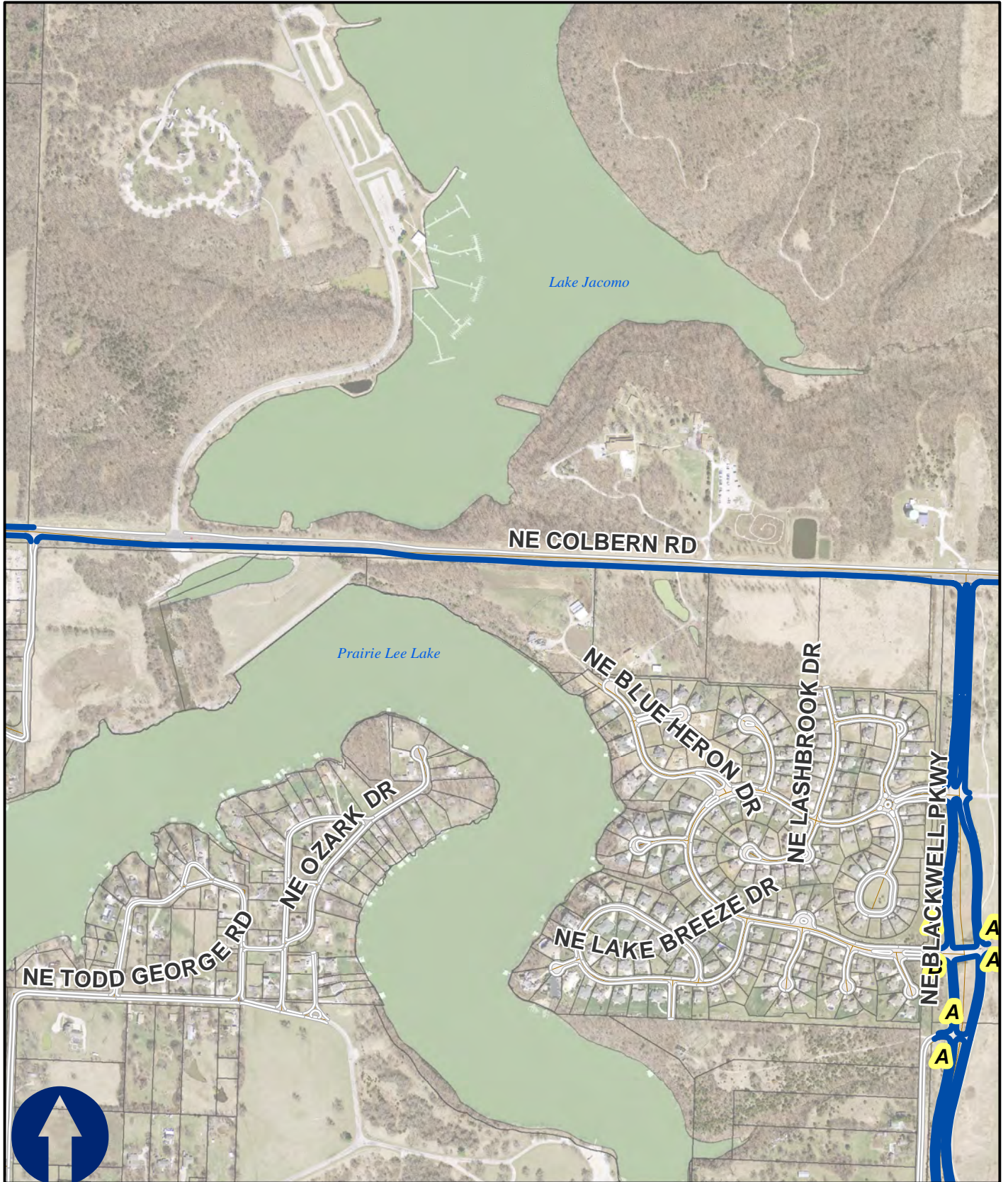
Lee's Summit Arterial Curb Replacement #39032272



Area 3c - Colbern RD
 Todd George - County Park

- Curb_Replace
- Sidewalk Replace
- D Drive Approach
- A Type A Ramp
- B Type B Ramp
- M Type M Ramp
- A-10 Type A-10 Ramp
- B-10 Type B-10 Ramp
- M-10 Type M-10 Ramp

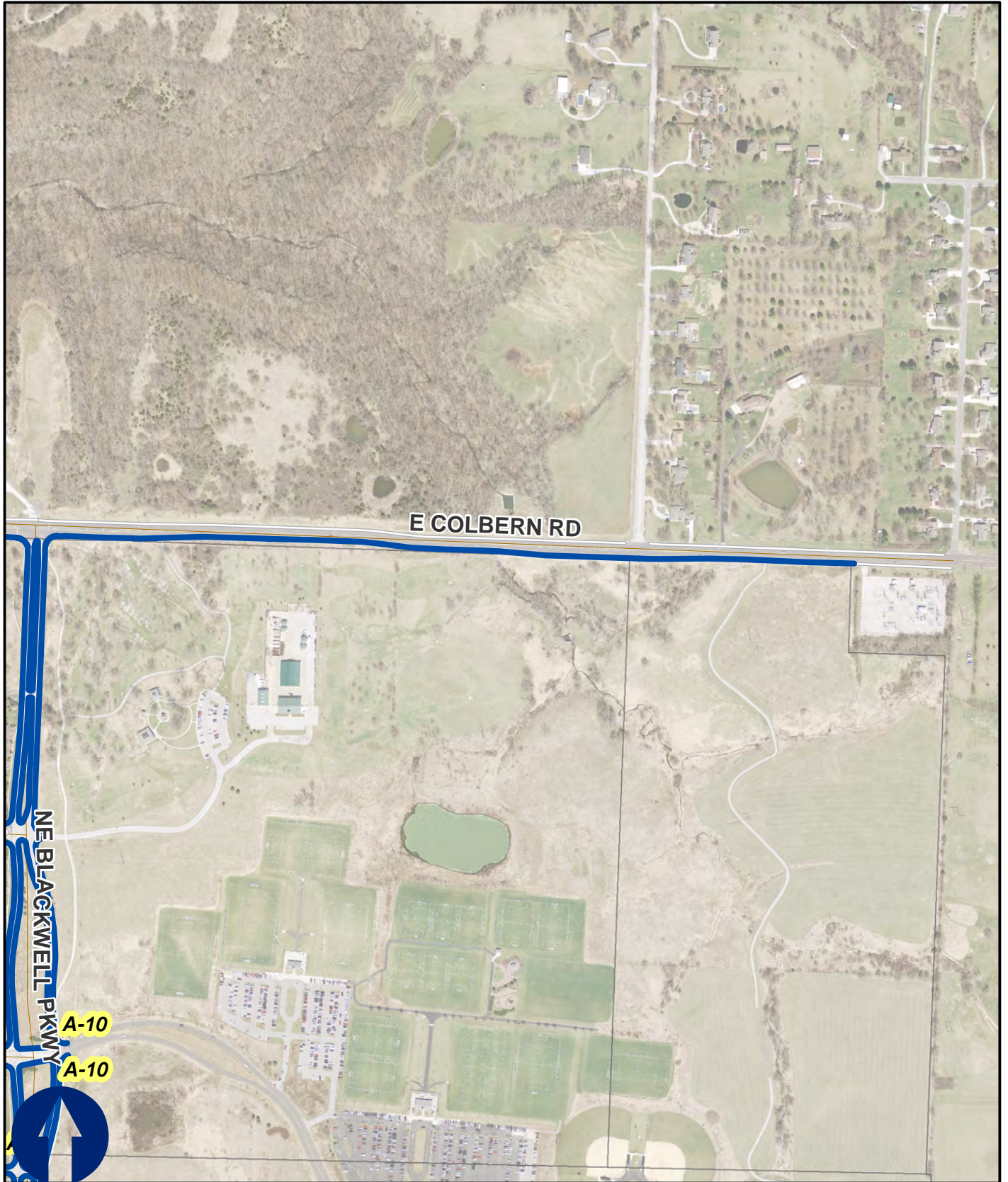
Lee's Summit Arterial Curb Replacement #39032272









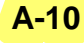
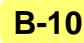
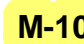
Area 3d - Colbern RD
County Park - Blackwell

- Curb_Replace
- Sidewalk Replace
- D Drive Approach
- A Type A Ramp
- B Type B Ramp
- M Type M Ramp
- A-10 Type A-10 Ramp
- B-10 Type B-10 Ramp
- M-10 Type M-10 Ramp

Lee's Summit Arterial Curb Replacement #39032272



Area 3e - Colbern RD
Blackwell - City Limit

-  Curb_Replace
-  Sidewalk Replace
-  Drive Approach
-  Type A Ramp
-  Type B Ramp
-  Type M Ramp
-  Type A-10 Ramp
-  Type B-10 Ramp
-  Type M-10 Ramp

Lee's Summit Arterial Curb Replacement #39032272



Area 4a - Colbern RD
Blackwell - Scruggs

- Curb_Replace
- Sidewalk Replace
- D Drive Approach
- A Type A Ramp
- B Type B Ramp
- M Type M Ramp
- A-10 Type A-10 Ramp
- B-10 Type B-10 Ramp
- M-10 Type M-10 Ramp

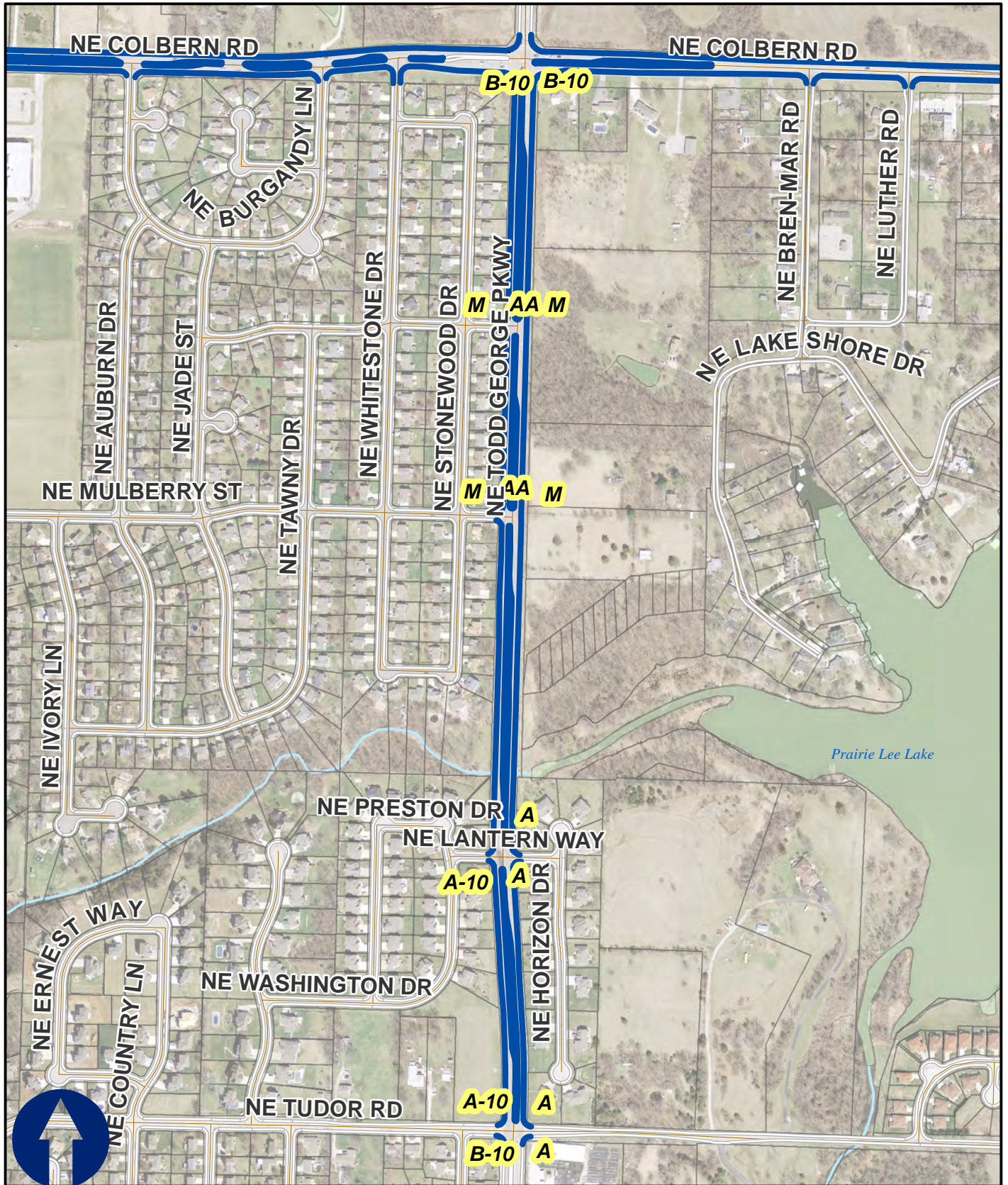
Lee's Summit Arterial Curb Replacement #39032272



Area 4b - Colbern RD
 Scruggs - Chipman

- Curb_Replace
- Sidewalk Replace
- D Drive Approach
- A Type A Ramp
- B Type B Ramp
- M Type M Ramp
- A-10 Type A-10 Ramp
- B-10 Type B-10 Ramp
- M-10 Type M-10 Ramp

Lee's Summit Arterial Curb Replacement #39032272

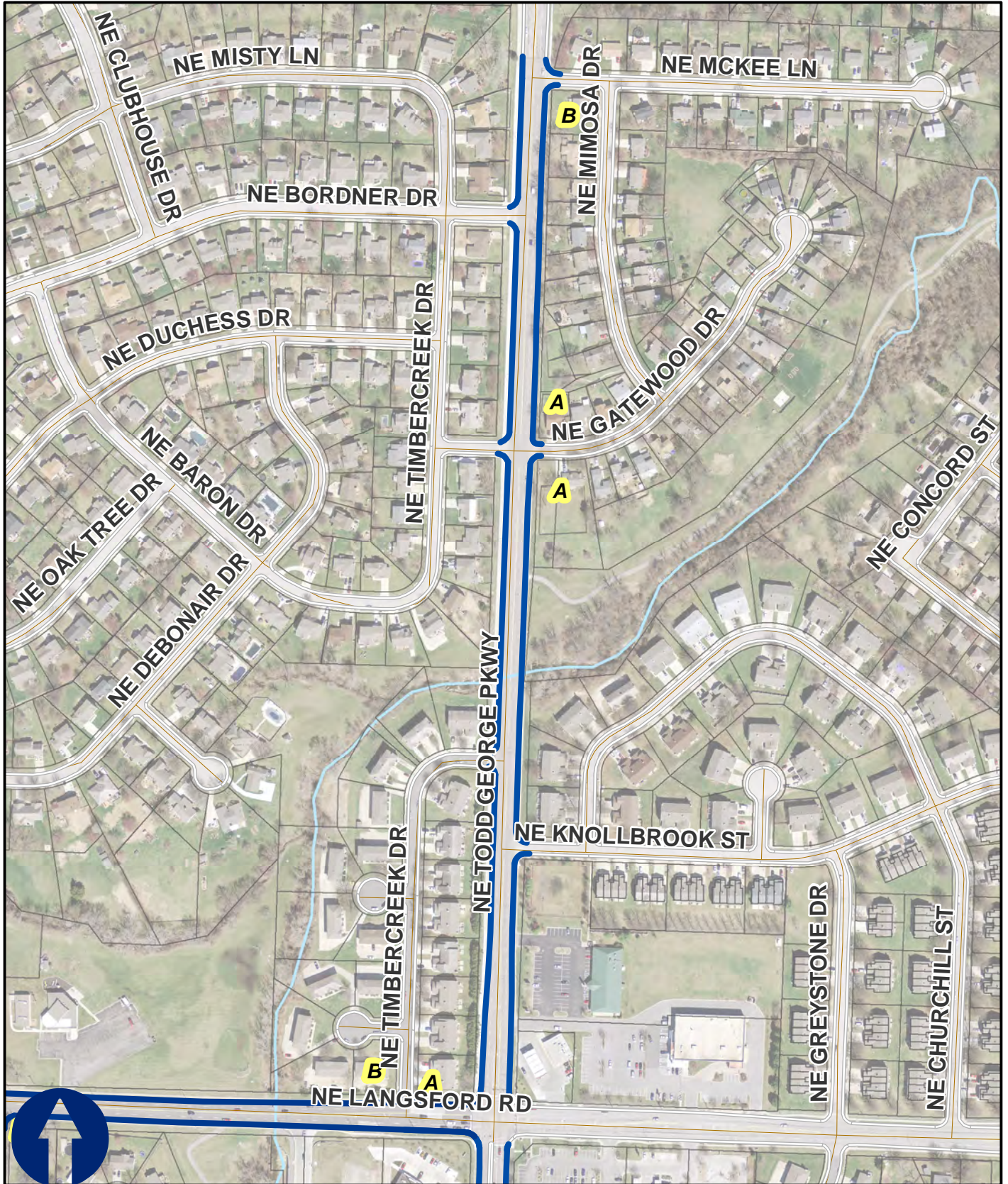


Area 5a - Todd George
Colbern - Tudor

- Curb_Replace
- Sidewalk Replace
- D Drive Approach

- A Type A Ramp
- B Type B Ramp
- M Type M Ramp
- A-10 Type A-10 Ramp
- B-10 Type B-10 Ramp
- M-10 Type M-10 Ramp

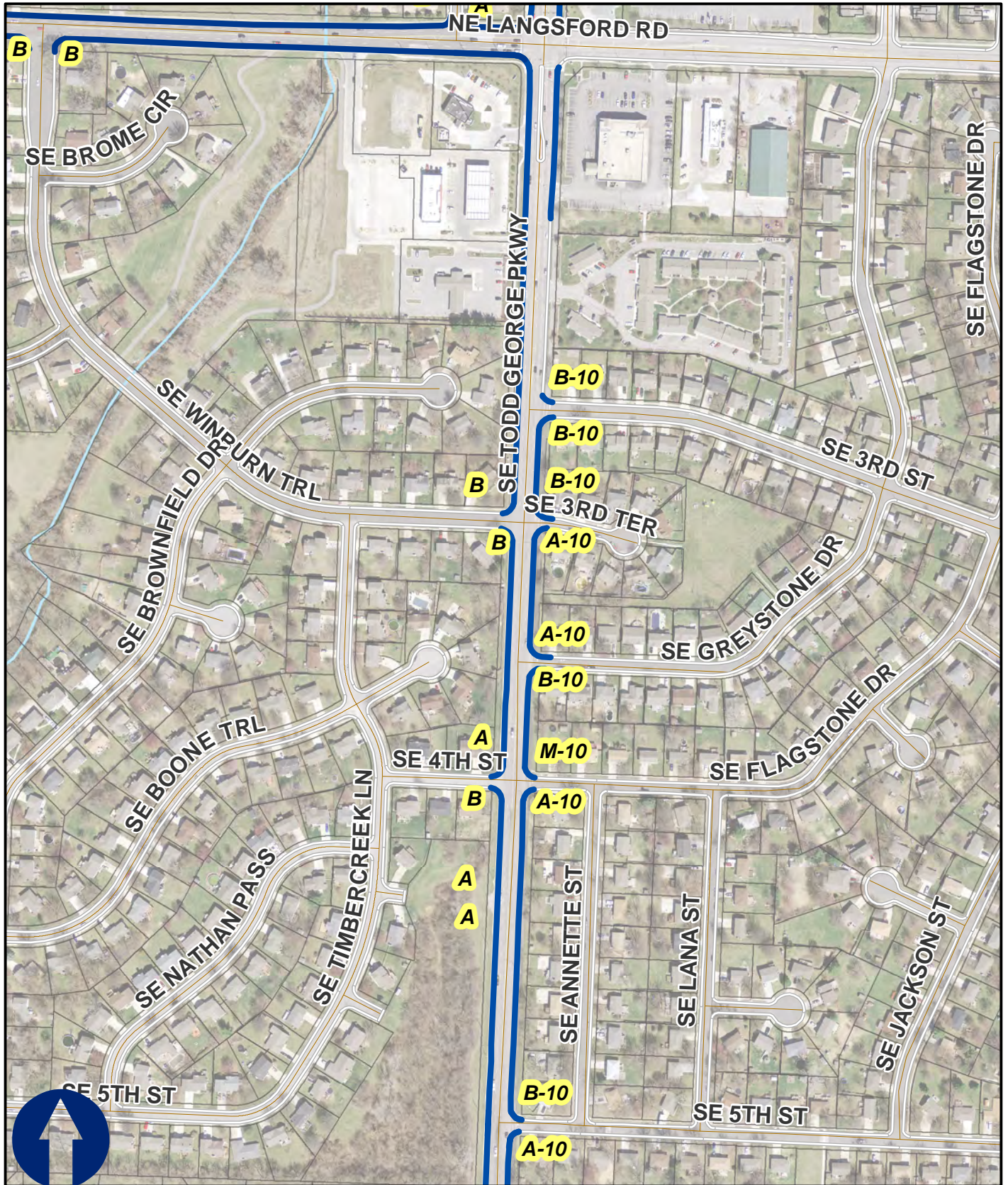
Lee's Summit Arterial Curb Replacement #39032272



Area 5b - Todd George
 McKee - Langsford

- Curb_Replace
- Sidewalk Replace
- D Drive Approach
- A Type A Ramp
- B Type B Ramp
- M Type M Ramp
- A-10 Type A-10 Ramp
- B-10 Type B-10 Ramp
- M-10 Type M-10 Ramp

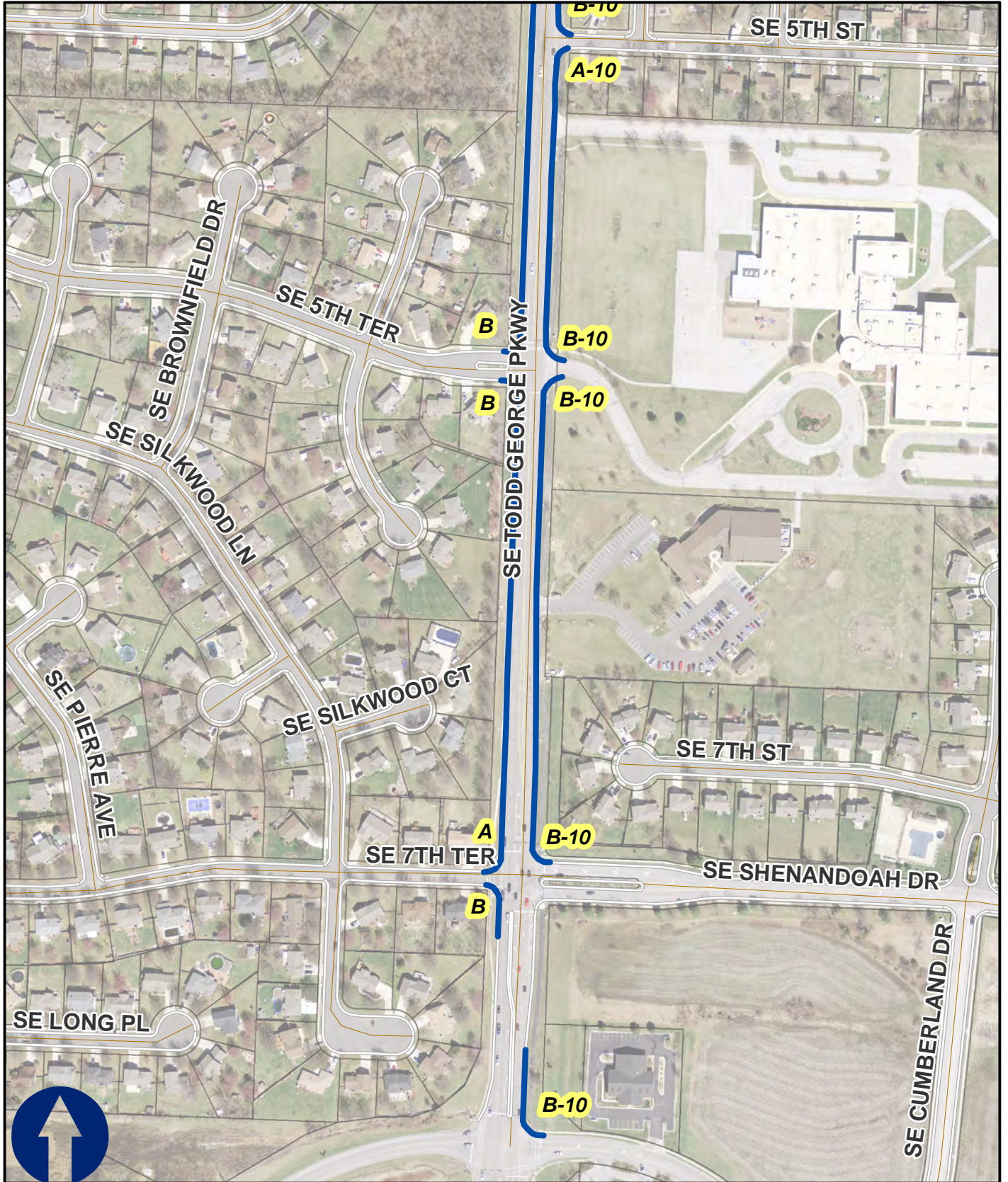
Lee's Summit Arterial Curb Replacement #39032272



Area 5c - Todd George
Langsford - 5th

- Curb_Replace
- Sidewalk Replace
- D Drive Approach
- A Type A Ramp
- B Type B Ramp
- M Type M Ramp
- A-10 Type A-10 Ramp
- B-10 Type B-10 Ramp
- M-10 Type M-10 Ramp

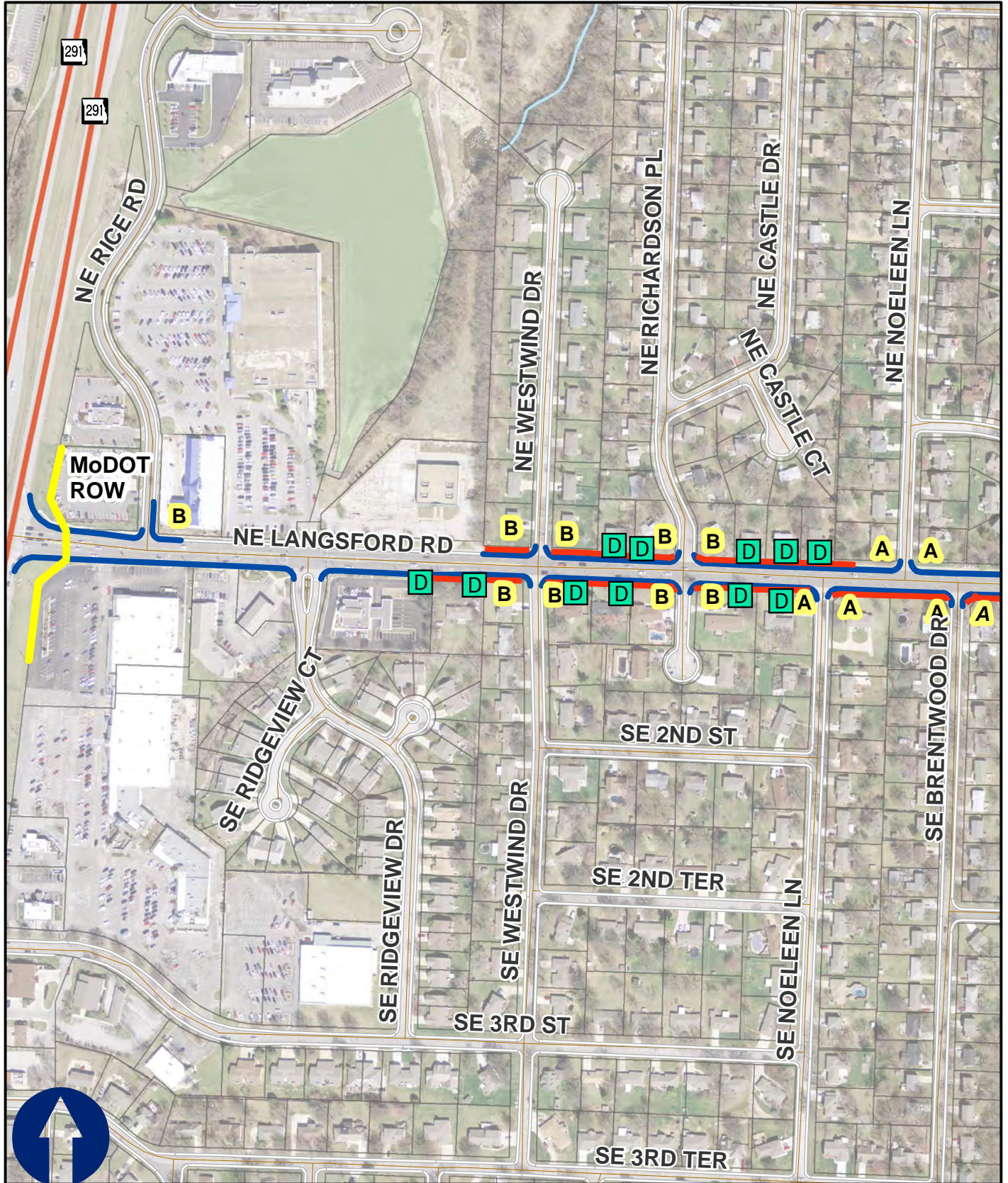
Lee's Summit Arterial Curb Replacement #39032272









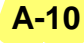
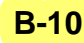
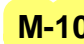
Area 5d - Todd George
5th - Blue Pkwy

- Curb_Replace
- Sidewalk Replace
- D Drive Approach
- A Type A Ramp
- B Type B Ramp
- M Type M Ramp
- A-10 Type A-10 Ramp
- B-10 Type B-10 Ramp
- M-10 Type M-10 Ramp

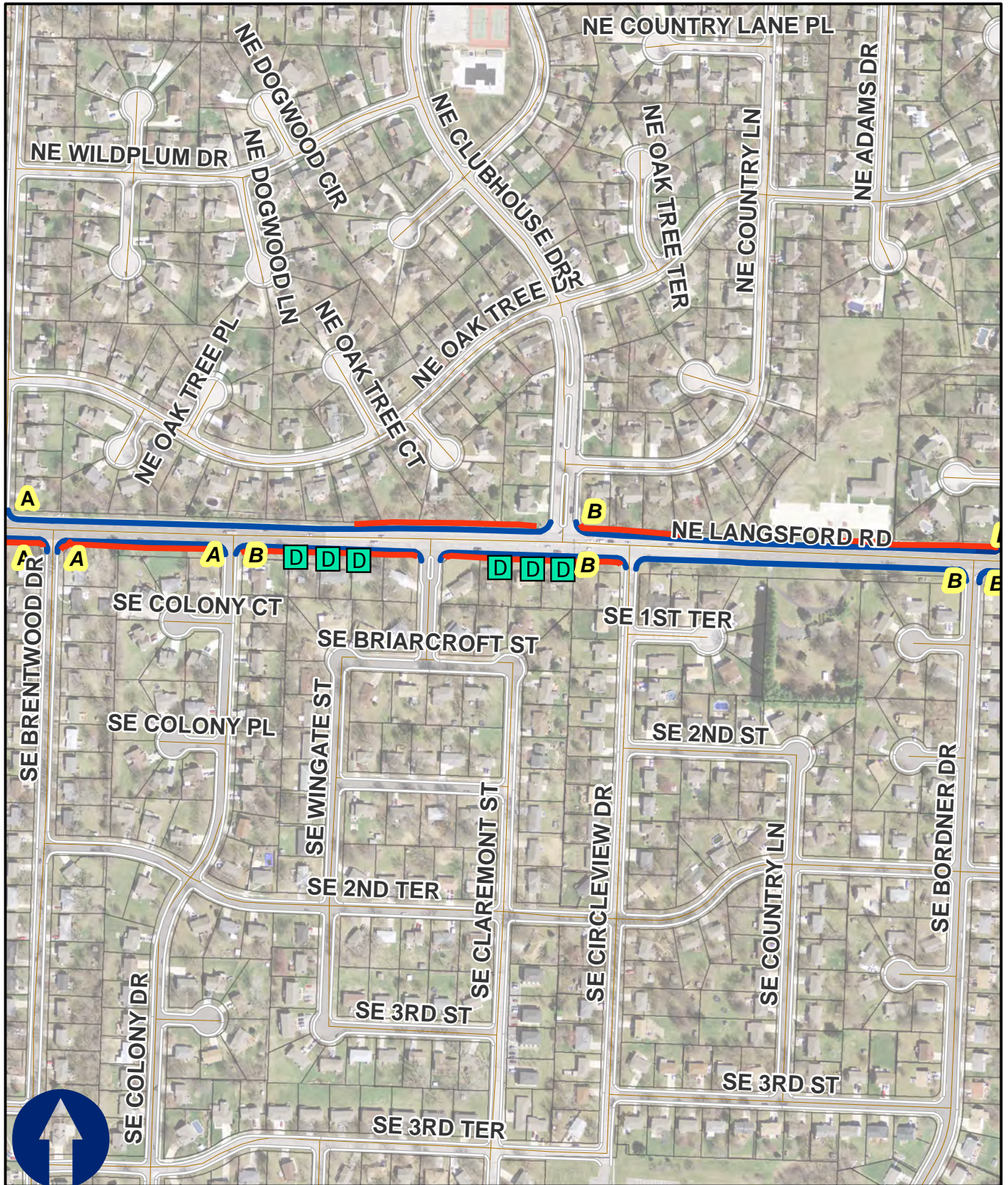
Lee's Summit Arterial Curb Replacement #39032272



Area 6a - Langsford
291 Hwy - Brentwood

-  Curb_Replace
-  Sidewalk Replace
-  Drive Approach
-  Type A Ramp
-  Type B Ramp
-  Type M Ramp
-  Type A-10 Ramp
-  Type B-10 Ramp
-  Type M-10 Ramp

Lee's Summit Arterial Curb Replacement #39032272

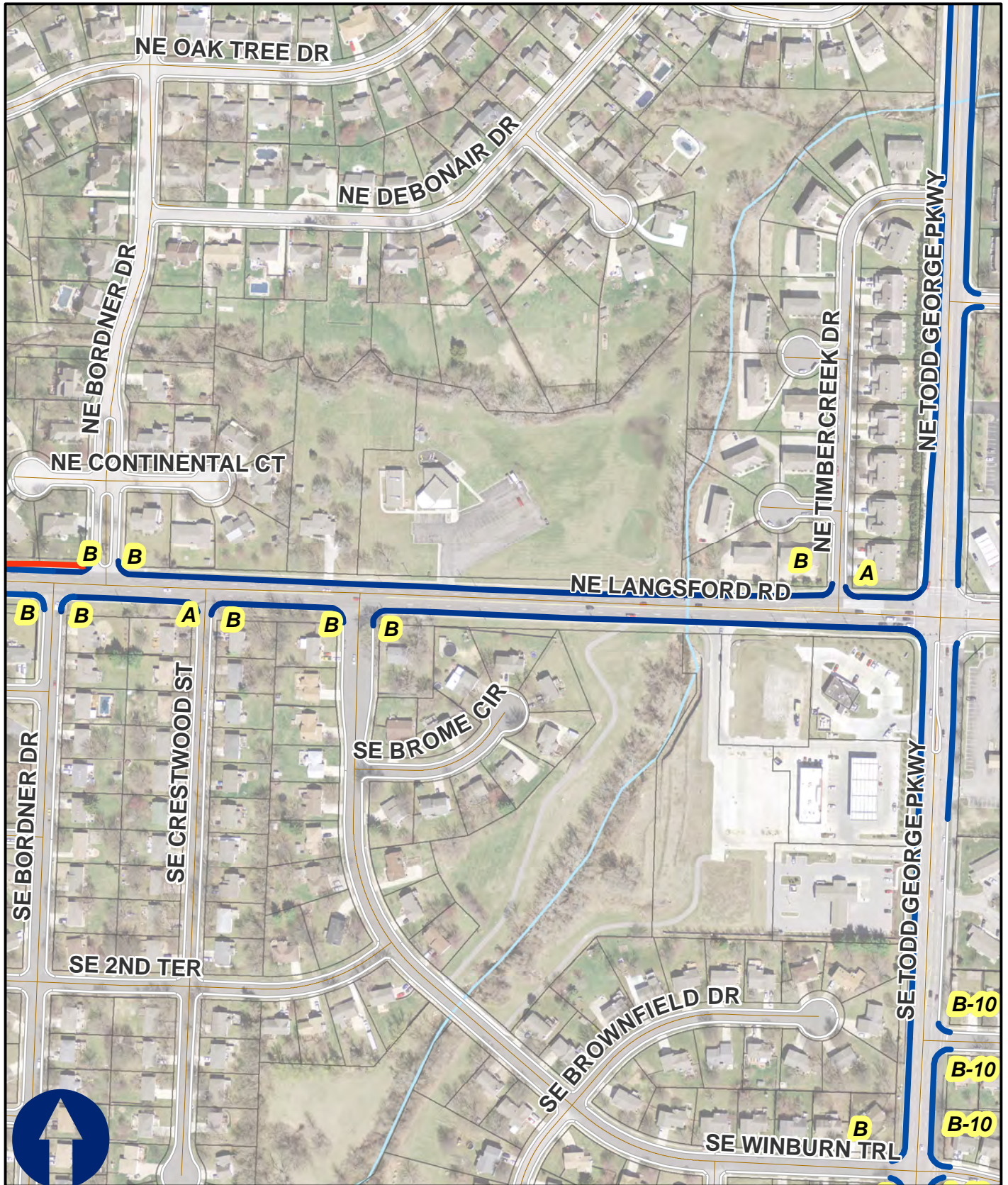


Area 6b - Langsford
Brentwood - Bordner




- Curb_Replace
- Sidewalk Replace
- D Drive Approach

- A Type A Ramp
- B Type B Ramp
- M Type M Ramp
- A-10 Type A-10 Ramp
- B-10 Type B-10 Ramp
- M-10 Type M-10 Ramp

Lee's Summit Arterial Curb Replacement #39032272



Area 6c - Langsford
Bordner - Todd George

- | | | |
|--|----------------------|----------------------------|
|  Curb_Replace | A Type A Ramp | A-10 Type A-10 Ramp |
|  Sidewalk Replace | B Type B Ramp | B-10 Type B-10 Ramp |
|  Drive Approach | M Type M Ramp | M-10 Type M-10 Ramp |