



Utility Notes

- Boundary information, existing utilities and topographic features shown are based on information supplied by surveyor and others.
- The existing utility locations shown on these plans are approximate and may not include all utility lines present. The contractor shall be responsible to call MO ONE CALL and identify field location of all existing underground utilities prior to beginning excavation/construction activities.
- The contractor shall be responsible for any damage to any utilities or their structures during excavation/construction activities.
- The contractor shall coordinate all main taps and utility services, both temporary and permanent with the city and/or respective utility.
- Utilities shown on the plan with specific elevations and/or structure locations are SUE quality level "B", i.e.: storm sewer, sanitary sewer, water hydrants & valves and other above-grade utilities. All other existing utility information shown is SUE quality level "D", primarily retracement of one-call records.
- The water meter and BFP to be located inside the building.

Demolition Notes

- Contractor will coordinate with respective utility all existing utilities that serve the site including but not limited to water lines, power, telephone, cable, storm sewer, sanitary sewer.
- The Contractor is specifically cautioned that the locations and/or elevation of existing utilities as shown on these plans are based on records of the various utility companies, and where possible, measurements taken in the field. The information is not to be relied on as being exact or complete. The Contractor must call the appropriate utility companies at least 72 hours before any excavation to request exact field location of utilities. It shall be the responsibility of the Contractor to relocate all existing utilities which conflict with the proposed improvements shown on the plans.
- The Contractor shall protect offsite improvements (including but not limited to sidewalks, drives, utilities, curbs and paving) surrounding the project boundary from demolition damage.
- The Contractor shall notify all utility companies for field verification and disconnection of utilities prior to any work. The Contractor shall contact the One Call utility information service & utility companies for utility locates. The Contractor shall coordinate and allow access for utility companies to perform any disconnection or relocation activities.
- The Contractor shall maintain at the demolition site the required documents for immediate review (i.e. Site Safety Plan, Demolition Permits, Street Closure Permits, Contract Documents, Demolition Plans, Salvage Verification Forms, Etc.).
- Prior to demolition, all applicable erosion control devices are to be installed.
- Damage to any existing features to remain will be replaced at the Contractors expense.
- All broken concrete and other debris from demolition shall be removed from the site. Areas disturbed during demolition shall be thoroughly evaluated by the geotechnical engineer responsible for site preparation prior to placement of structural fill. All disturbed soils shall be undercut prior to placement of structural fill, per the geotechnical recommendations.
- The Contractor shall strip all remaining vegetation, topsoil, debris and other unsuitable materials from the proposed construction areas. Stripping depths shall be adjusted to remove all vegetation and root systems. The actual stripping depth shall be based on visual examination by the Geotechnical Engineer. Topsoil removed during stripping operations can be used for final site grading within the landscaped areas. Care shall be exercised to separate these materials to avoid incorporation of the organic matter in structural fill sections.
- For tree & stump removal, the Contractor shall remove all root systems from the site not designated to be saved. Materials disturbed during removal of stumps shall be undercut and replaced with structural fill. A zone of desiccated soils may exist in the vicinity of the trees. The desiccated soils have a higher swell potential and shall be undercut and replaced with structural fill.
- Excavations created by the removal of any existing utility lines that extend below design grades shall be cut wide enough to allow use of heavy construction equipment to compact the fill. Base of the excavations shall be thoroughly evaluated by the geotechnical engineer prior to placement of fill. If existing utilities are to be left in-place, existing trench backfill shall be evaluated in accordance with the recommendations of evaluation of existing fill.

Utility Contacts

- SANITARY SEWERS – City of Lee's Summit, Phone (816) 969-7606,
STORM SEWERS – City of Lee's Summit, Phone (816) 969-7307,
WATER – City of Lee's Summit, Phone (816) 969-7606,
ELECTRIC – Aquila, Phone (816) 737-7465
GAS – Missouri Gas Energy, Phone (816) 969-2230
TELEPHONE – Southwestern Bell Telephone, Phone (816) 275-8215
CABLE – Time Warner Co., Phone (816) 358-5360

Symbols

- ⊙ sanitary manhole
- ⊙ service cleanout
- rectangular structure
- circular structure
- ⌵ fire hydrant
- ⊕ water valve
- Ⓜ water meter
- Ⓛ BFP backflow preventer
- ⊕ natural gas meter
- ⊕ electric pole
- Ⓜ service transformer (pad mount)
- Ⓛ primary switch gear
- ⊙ street light
- ⊙ pedestrian street light
- ⊙ private site lighting
- Ⓛ cable/phone/data junction box



Utility Legend

- existing
- proposed

Linetypes

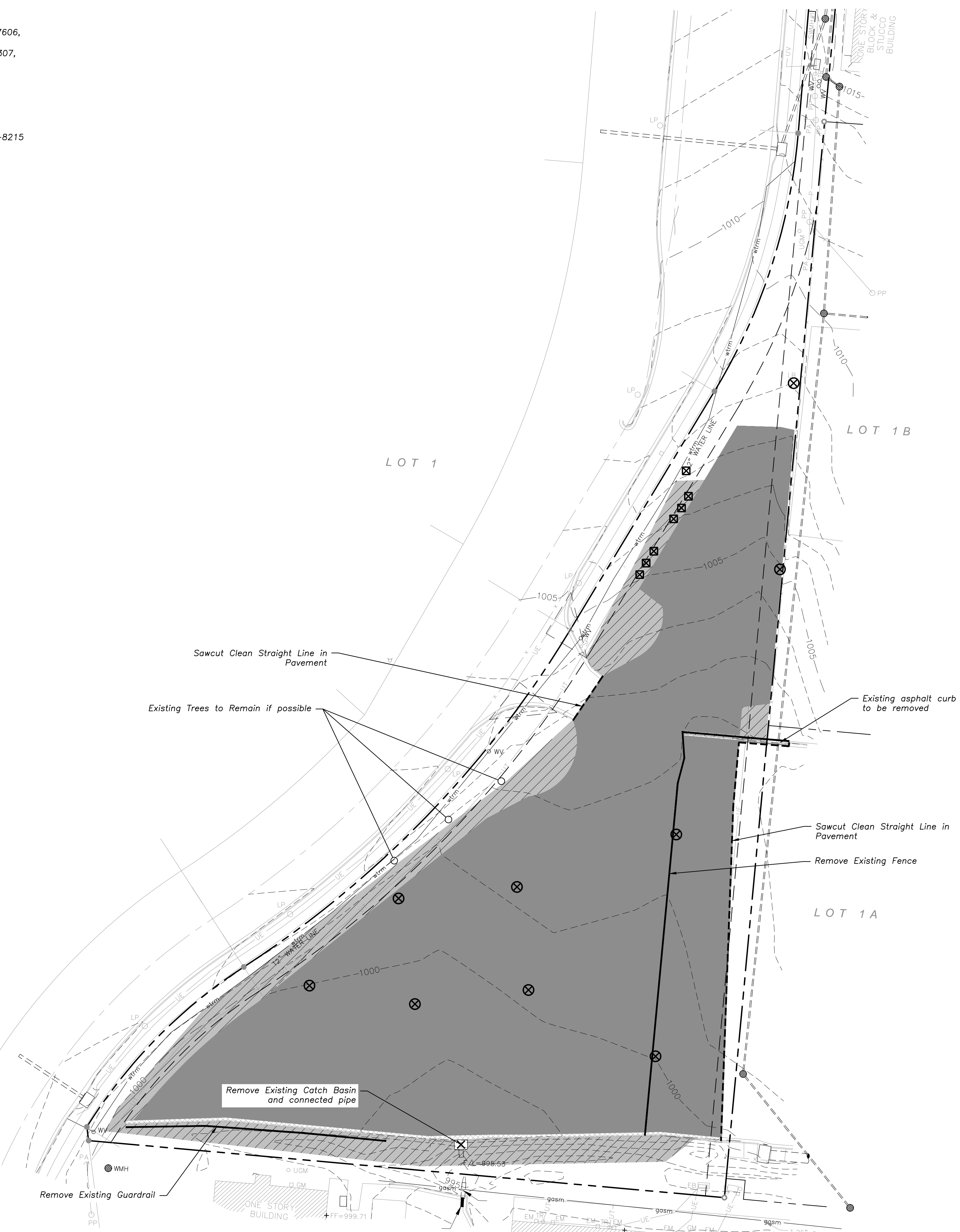
- sanm sanitary main
- sans sanitary service
- stms storm sewer (solid wall)
- stm storm sewer (solid wall)
- stmp storm sewer (perforated)
- stmp storm sewer (perforated)
- wtrm water main
- wtrf water service (fire)
- wtrd water service (domestic)
- wtri water service (irrigation)
- gasm natural gas main
- gass natural gas service
- elpo overhead primary electric
- elpu underground primary electric
- elso overhead secondary electric
- elsu underground secondary electric
- eles underground site electric
- dato overhead cable/phone/data
- datu underground cable/phone/data
- dotso overhead cable/phone/data service
- dotsu underground cable/phone/data service

Property Legend

- ROW & Property Lines
- Easements

Demolition Legend

- Remove existing asphalt
- Remove existing concrete
- Remove existing sidewalk & landscaping
- Remove existing curb & gutter
- Saw cut
- Remove Existing Fence/Guardrail
- Remove existing utility
- Remove Light Poles
- Remove existing trees



1 Demolition Plan
scale: 1"=30'
north

a proposed new facility for
Bob Sight Quick Lane
NW Blue Parkway
Lee's Summit, Missouri

date 11.21.16
drawn by IRW
checked by PAM
revisions

sheet number
C1.3
drawing type PDP
project number 16192