



PROJECT NAME: \_\_\_\_\_ ATTIC STORAGE

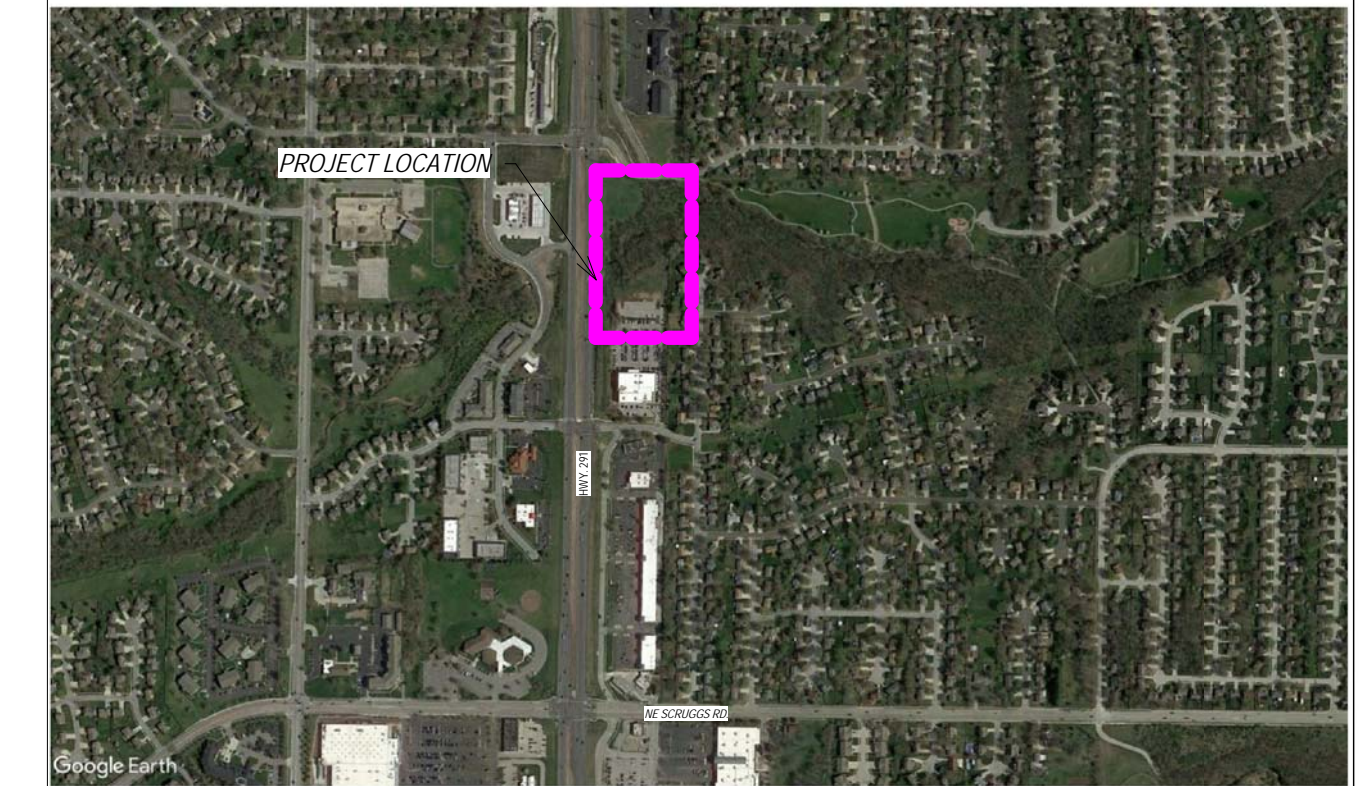
PROJECT DESCRIPTION: \_\_\_\_\_ PROPOSED SELF-STORAGE FACILITY WITH CLIMATE CONTROL

PROJECT LOCATION: \_\_\_\_\_ 920 NE DEERBROOK ST., LEE'S SUMMIT, MISSOURI

CONTRACTOR CONTACT: \_\_\_\_\_ STRICKLAND CONSTRUCTION  
ATTN: ROGERS STRICKLAND  
720 SOUTH ROGERS ROAD, SUITE B  
OLATHE, KS 66062  
P) 913-764-7000

ARCHITECT: \_\_\_\_\_ HERNLY ASSOCIATES, INC.  
ATTN: STAN HERNLY  
1100 RHODE ISLAND ST.  
LAWRENCE, KANSAS 66044  
P) 785-749-5806  
F) 785-749-1515

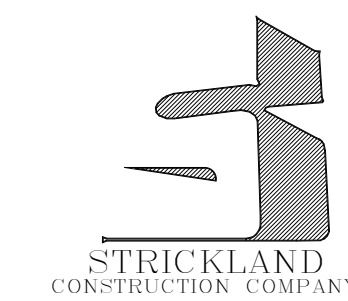
## PROJECT INFORMATION



## PROJECT LOCATION



**ARCHITECT**  
Hernly Associates, Inc.  
1100 Rhode Island St.  
Lawrence, KS 66044  
P) 785-749-5806  
F) 785-749-1515



**GENERAL CONTRACTOR**  
Strickland Construction  
720 S. Rogers Road, Suite 'B'  
Olathe, KS 66062  
P) 913-764-7000

ATTIC STORAGE OF LEE'S SUMMIT  
920 NE DEERBROOK ST., LEE'S SUMMIT, MISSOURI



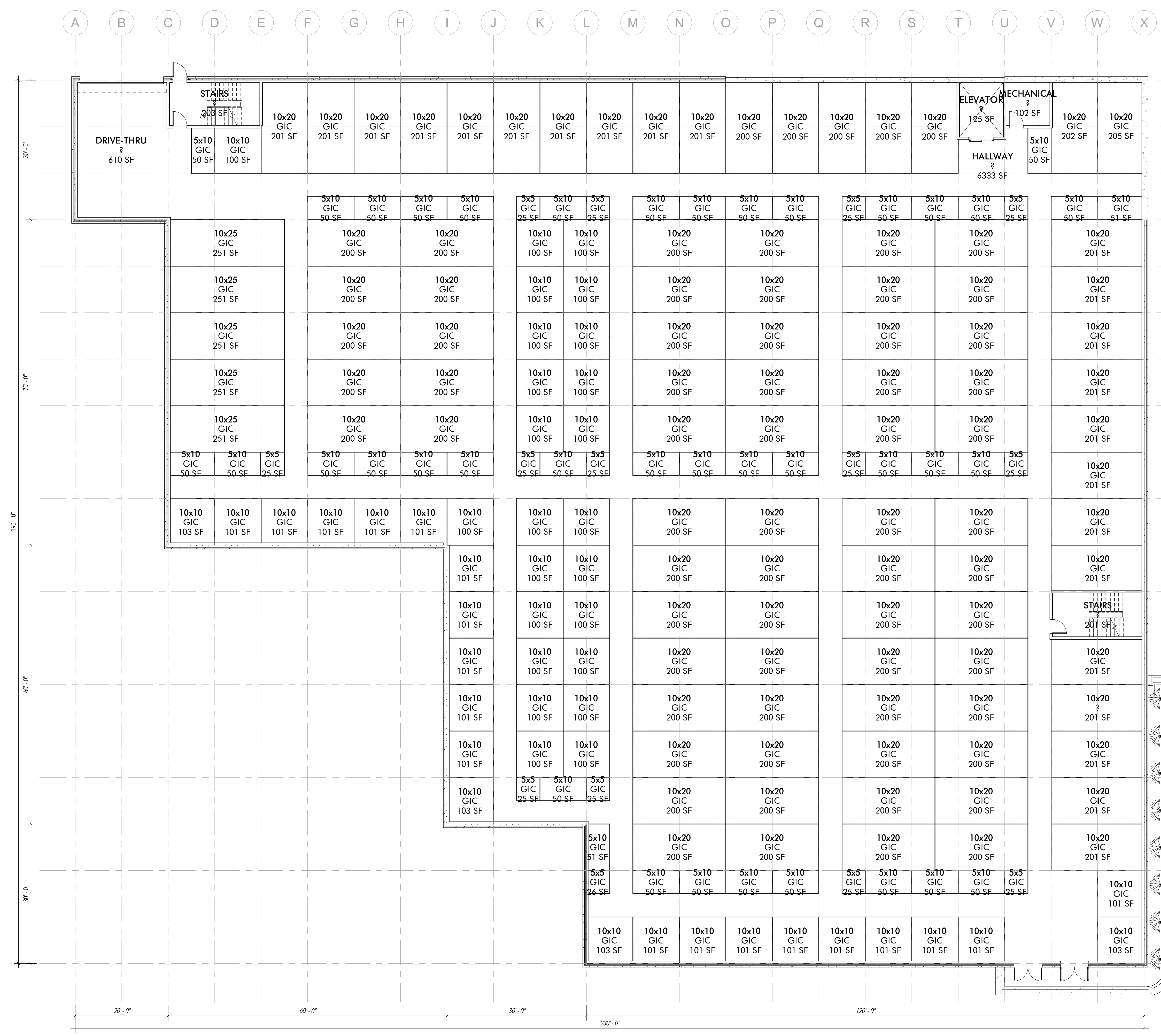
1100 Rhode Island St.  
Lawrence, Kansas  
66044  
785 - 749 - 5806  
FAX 785 - 749 - 1515

COVER SHEET

Date: \_\_\_\_\_ Issue Date  
Drawn by: \_\_\_\_\_ WCTJ  
Checked by: \_\_\_\_\_ Checker  
Revisions: \_\_\_\_\_

SHEET INDEX	
NUMBER	NAME
A0.0	COVER SHEET
A1.0	UNIT MIX - LEVEL 1
A1.1	UNIT MIX - LEVEL 2
A1.2	UNIT MIX - LEVEL 3
A2.0	ELEVATIONS
A2.1	ELEVATIONS
A3.0	PERSPECTIVES
AS1.0	ARCHITECTURAL SITE PLAN

A0.0



**UNIT MIX SCHEDULE**

UNIT SIZE/NAME	Count	AREA	UNIT TYPE/NUMBER
5x5	26	25 SF	GIC
5x5	14	25 SF	UIC
5x10	79	50 SF	GIC
5x10	48	50 SF	UIC
10x10	80	100 SF	GIC
10x10	62	100 SF	UIC
10x15	34	150 SF	GIC
10x15	31	150 SF	UIC
10x20	1	200 SF	GIC
10x20	136	200 SF	GIC
10x20	45	200 SF	UIC
10x25	20	250 SF	GIC
10x25	5	300 SF	GIC
<b>TOTAL</b>	<b>581</b>		

**ATTIC STORAGE OF LEE'S SUMMIT**  
 920 NE DEERBROOK ST., LEE'S SUMMIT, MISSOURI

**1ST LEVEL**  
34,200 S.F.

**UNIT MIX SCHEDULE - LEVEL 1**

UNIT SIZE/NAME	Count	AREA	UNIT TYPE/NUMBER
5x5	14	25 SF	GIC
5x10	39	50 SF	GIC
10x10	47	100 SF	GIC
10x20	1	200 SF	GIC
10x20	91	200 SF	GIC
10x25	5	250 SF	GIC
<b>TOTAL</b>	<b>197</b>		

**1 UNIT MIX - LEVEL 1**  
3/32" = 1'-0"

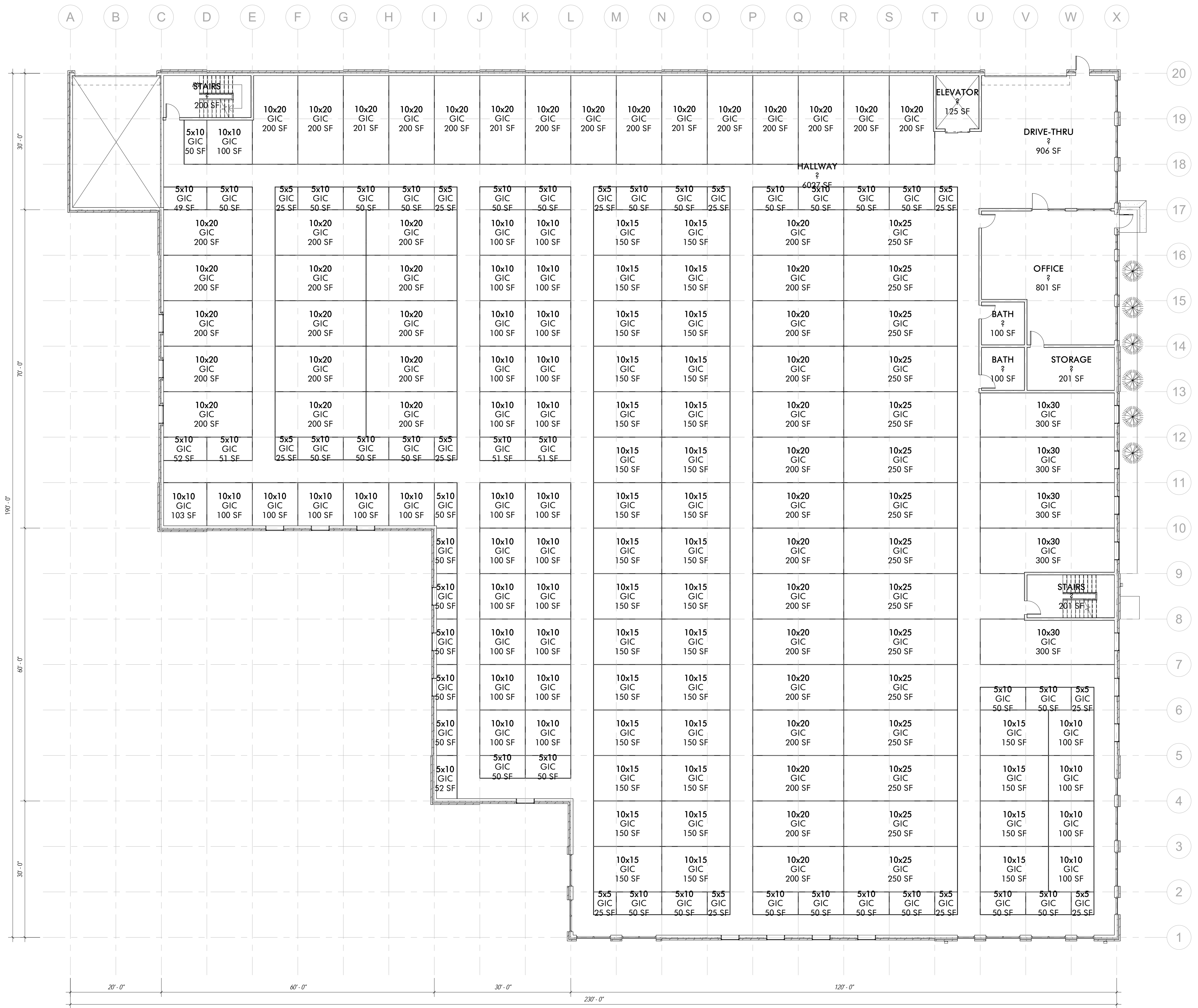


1100 Rhode Island St.  
Lawrence, Kansas 66044  
785 - 749 - 5806  
FAX 785 - 749 - 1515

UNIT MIX - LEVEL 1

Date: Issue Date  
Drawn by: WCTJ  
Checked by: Checker  
Revisions:

**A1.0**



**2ND LEVEL**  
**33,600 S.F.**

**UNIT MIX SCHEDULE - LEVEL 2**

UNIT SIZE/NAME	Count	AREA	UNIT TYPE/NUMBER
5x5	12	25 SF	GIC
5x10	40	50 SF	GIC
10x10	33	100 SF	GIC
10x15	34	150 SF	GIC
10x20	45	200 SF	GIC
10x25	15	250 SF	GIC
10x30	5	300 SF	GIC
<b>TOTAL</b>	<b>184</b>		

**1 UNIT MIX - LEVEL 2**

**ATTIC STORAGE OF LEE'S SUMMIT**  
 920 NE DEERBROOK ST., LEE'S SUMMIT, MISSOURI

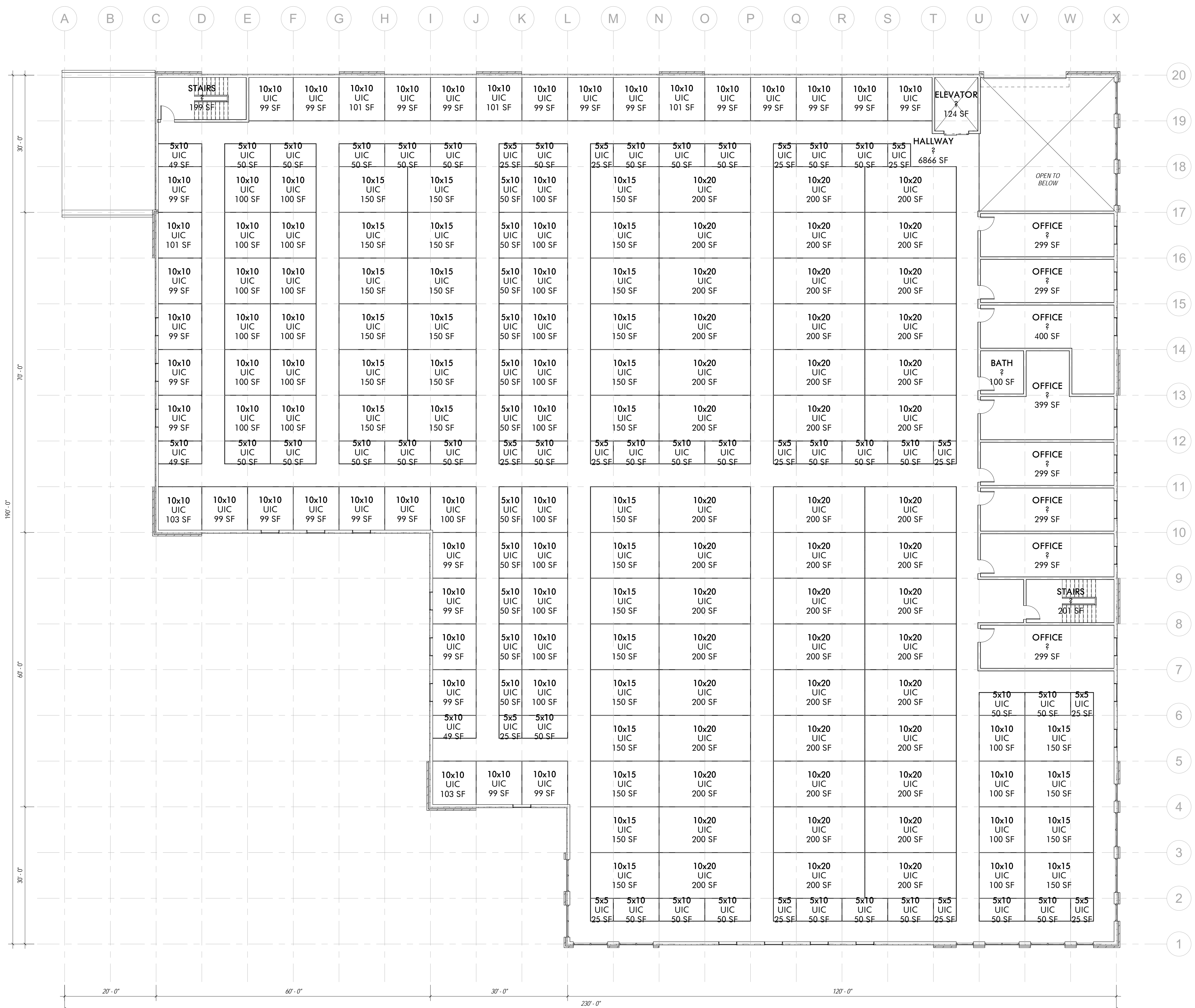


1100 Rhode Island St.  
 Lawrence, Kansas  
 66044  
 785 - 749 - 5806  
 FAX 785 - 749 - 1515

UNIT MIX - LEVEL 2

Date: Issue Date  
 Drawn by: WCTJ  
 Checked by: Checker  
 Revisions:

**A1.1**



ATTIC STORAGE OF LEE'S SUMMIT  
 920 NE DEERBROOK ST., LEE'S SUMMIT, MISSOURI

3RD LEVEL  
 33,600 S.F.

UNIT MIX SCHEDULE - LEVEL 3

UNIT SIZE/NAME	Count	AREA	UNIT TYPENUMBER
5x5	14	25 SF	UIC
5x10	48	50 SF	UIC
10x10	62	100 SF	UIC
10x15	31	150 SF	UIC
10x20	45	200 SF	UIC
TOTAL	200		

1 UNIT MIX - LEVEL 3  
 3/32" = 1'-0"

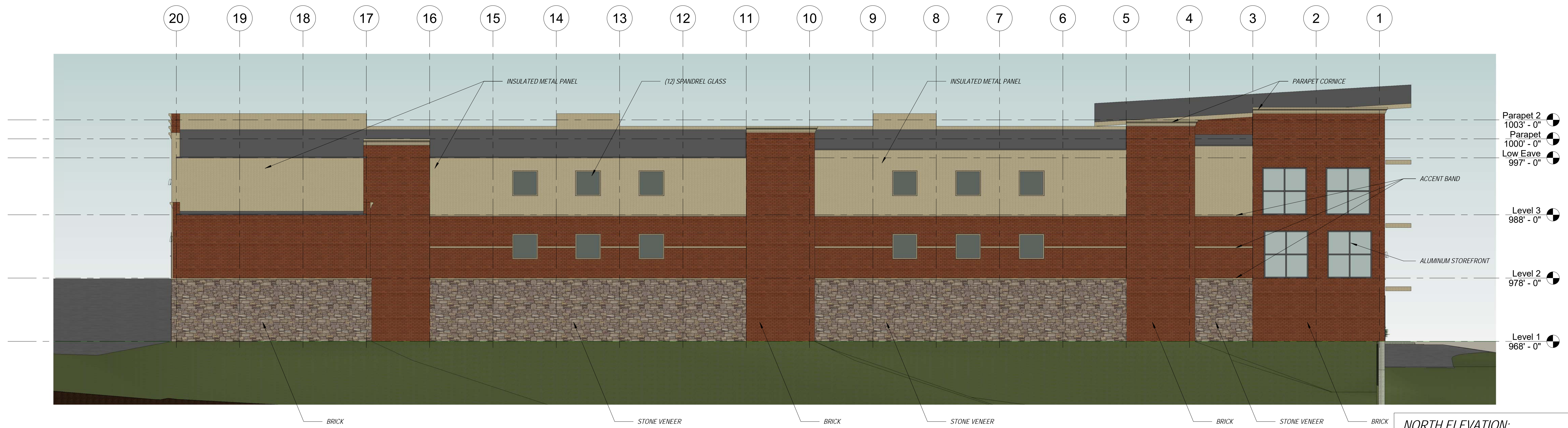


1100 Rhode Island St.  
 Lawrence, Kansas 66044  
 785 - 749 - 5806  
 FAX 785 - 749 - 1515

UNIT MIX - LEVEL 3

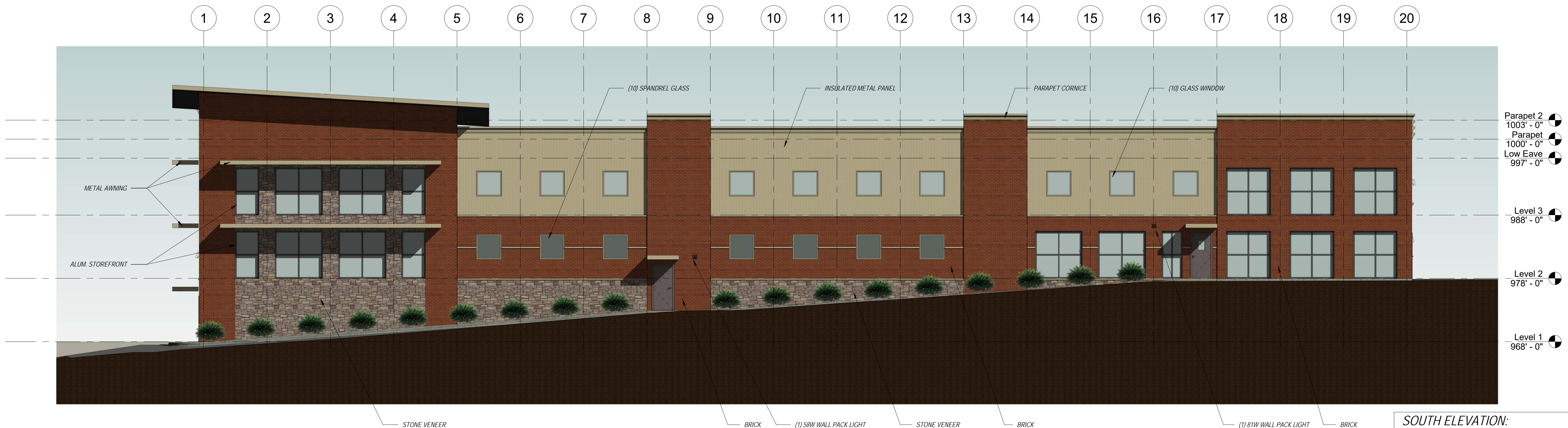
Date: Issue Date  
 Drawn by: WCTJ  
 Checked by: Checker  
 Revisions:

A1.2



**NORTH ELEVATION:**  
 SOLID: 4,738 S.F. / 5,973 S.F. = 79%  
 METAL: 1,235 S.F. / 5,973 S.F. = 21%

**1 NORTH ELEVATION**  
 1/8" = 1'-0"



**SOUTH ELEVATION:**  
 SOLID: 4,389 S.F. / 5,630 S.F. = 78%  
 METAL: 1,241 S.F. / 5,630 S.F. = 22%

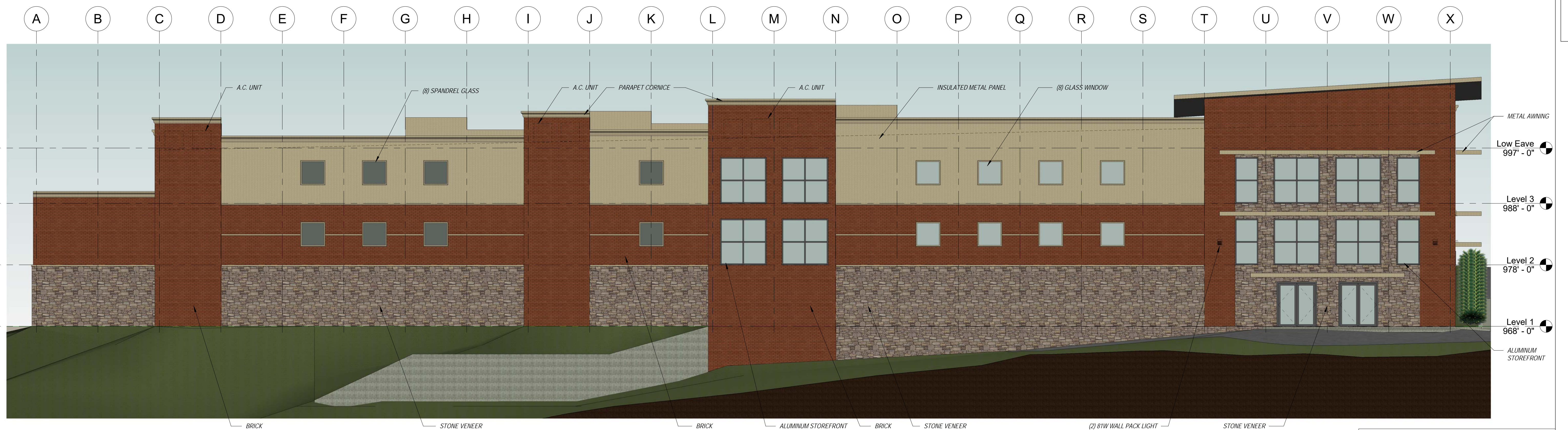
**2 SOUTH ELEVATION**  
 1/8" = 1'-0"

**ATTIC STORAGE OF LEE'S SUMMIT**  
 920 NE DEERBROOK ST., LEE'S SUMMIT, MISSOURI

**Hernly** ASSOCIATES, INC.  
 ARCHITECTS  
 PRESERVATION CONSULTANTS  
 GRANT ADMINISTRATORS  
 1100 Rhode Island St.  
 Lawrence, Kansas 66044  
 785 - 749 - 5804  
 FAX 785 - 749 - 1515

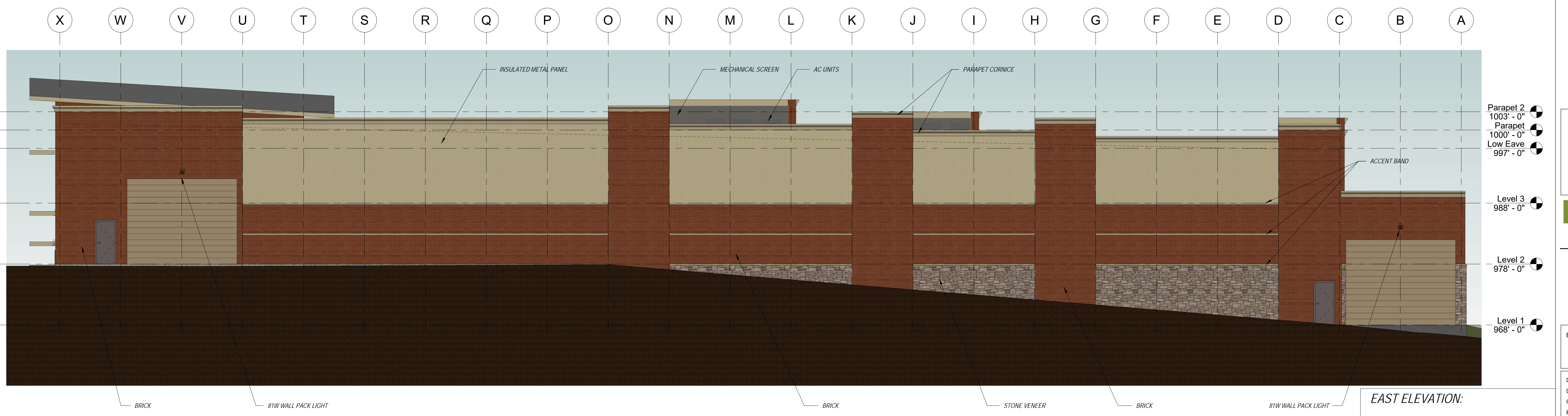
ELEVATIONS  
 Date: Issue Date  
 Drawn by: WCTJ  
 Checked by: Checker  
 Revisions:

**A2.0**



**WEST ELEVATION:**  
 SOLID: 6,189 S.F. / 7,689 S.F. = 80%  
 METAL: 1,500 S.F. / 7,689 S.F. = 20%

**1 WEST ELEVATION**  
 1/8" = 1'-0"



**EAST ELEVATION:**  
 SOLID: 4,436 S.F. / 6,092 S.F. = 73%  
 METAL: 1,656 S.F. / 6,092 S.F. = 27%

**2 EAST ELEVATION**  
 1/8" = 1'-0"

**ATTIC STORAGE OF LEE'S SUMMIT**  
 920 NE DEERBROOK ST., LEE'S SUMMIT, MISSOURI

**Hernly** ASSOCIATES, INC.  
 ARCHITECTS  
 PRESENTATION CONSULTANTS  
 GRANT ADMINISTRATORS

1100 Rhode Island St.  
 Lawrence, Kansas 66044  
 785 - 749 - 5806  
 FAX 785 - 749 - 1515

ELEVATIONS

Date:	Issue Date
Drawn by:	WCTJ
Checked by:	Checker
Revisions:	



1 3D View 1



2 3D View 2

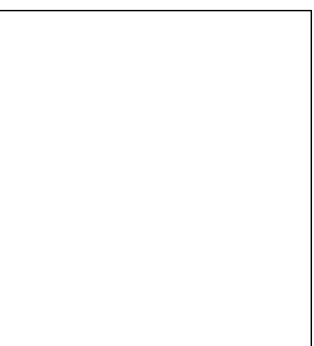


3 3D View 3



4 3D View 4

ATTIC STORAGE OF LEE'S SUMMIT  
 920 NE DEERBROOK ST., LEE'S SUMMIT, MISSOURI

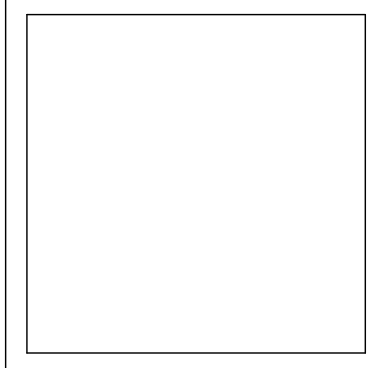
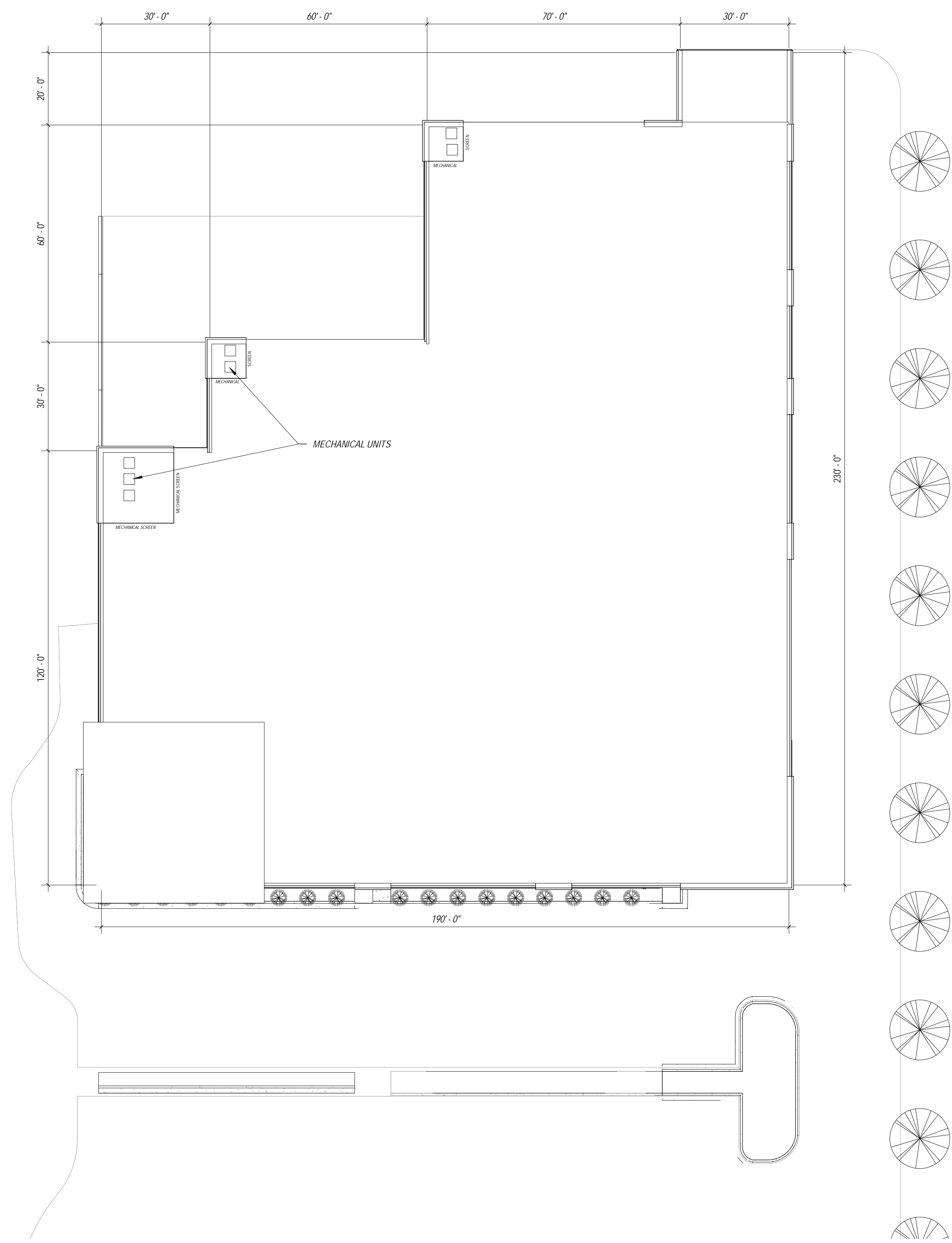


1100 Rhode Island St.  
 Lawrence, Kansas 66044  
 785 - 749 - 5806  
 FAX 785 - 749 - 1515

PERSPECTIVES

Date: Issue Date  
 Drawn by: WCTJ  
 Checked by: Checker  
 Revisions:

A3.0



1100 Rhode Island St.  
 Lawrence, Kansas  
 66044  
 785 - 749 - 5806  
 FAX 785 - 749 - 1515

ARCHITECTURAL SITE  
 PLAN

Date: Issue Date  
 Drawn by: WCTJ  
 Checked by: Checker  
 Revisions: