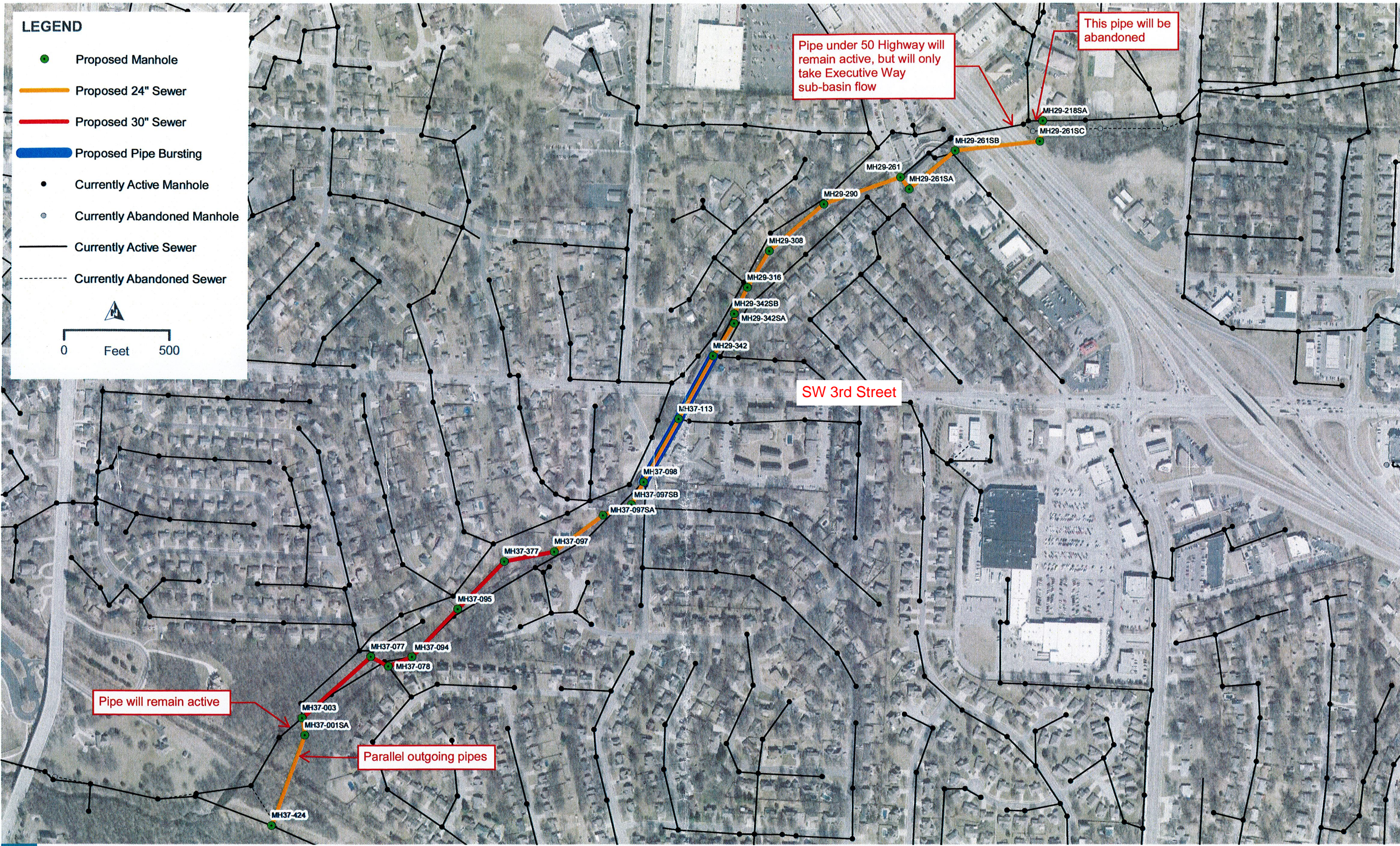


LEGEND

- Proposed Manhole
- Proposed 24" Sewer
- Proposed 30" Sewer
- Proposed Pipe Bursting
- Currently Active Manhole
- Currently Abandoned Manhole
- Currently Active Sewer
- - - Currently Abandoned Sewer



Pipe under 50 Highway will remain active, but will only take Executive Way sub-basin flow

This pipe will be abandoned

Pipe will remain active

Parallel outgoing pipes



PROPOSED ALIGNMENT
LSMO DOWNTOWN INTERCEPTOR

FIGURE 13