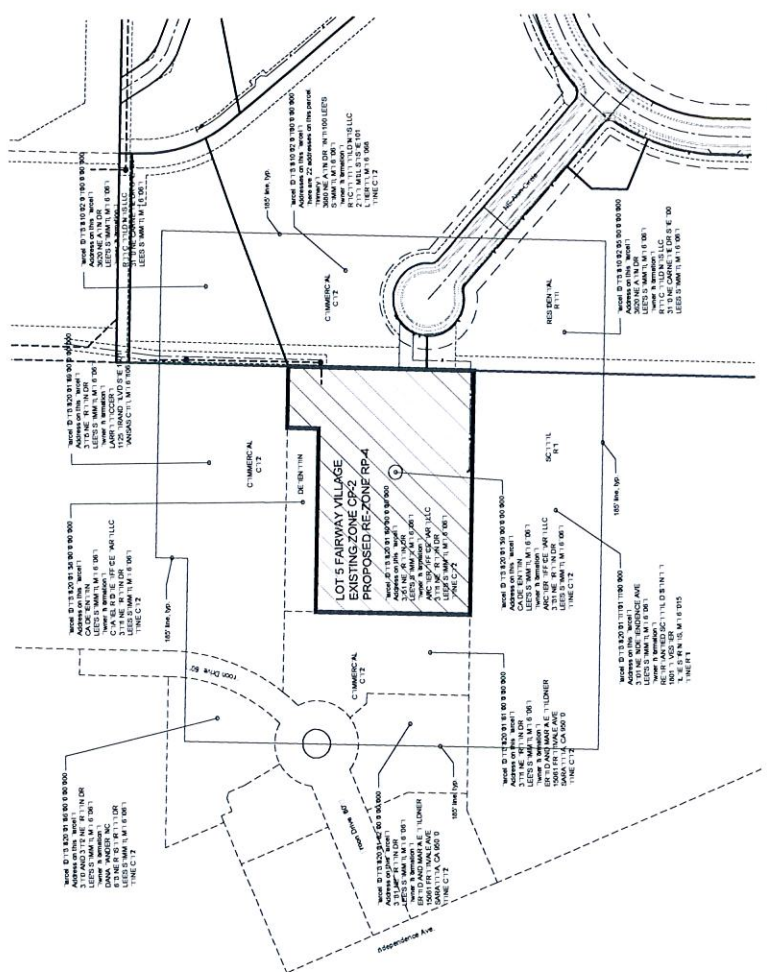


a new residential development
Chapel Ridge/Fairway Village Extension
Fairway Village Lot 5, NE Akin Circle
Lee's Summit, Missouri

DATE: 1.26.16
DRAWN BY: DAE
CHECKED BY: DAE
REVISIONS:

drawing number:
A1.0
recompiling:
drawing number:
15086



1 rezoning map
1" = 80'

Site Criteria

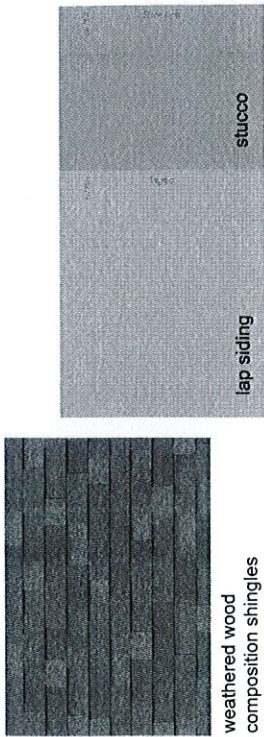
- site is currently zoned C-1.2
- proposed rezoning to R-P-1
- total site area lot 5, 1.83 acres, approx. 19,523 s.f.
- max. build out, 12 units/acre
- dwelling units/acre, 1.55/12.22 max.
- 60% impervious site area max. 11,111 s.f.
- I.O. green space min., 31,809 s.f.
- setbacks:
 - front 50' rear street
 - side 20' other streets
 - side 10' lot line
 - side 20' between buildings
 - rear 20'
- parking:
 - 2 spaces per 3 drfm. unit
 - 1.5 for visitor L
 - 2.5 spaces per unit
 - 1.5 spaces per 2 drfm. unit
 - 1.5 for visitor L
 - 2.0 spaces per unit

Legal Description: Lot 5 Fairway Village, a sub-division in section 11, township 18 north, range 31 west in the city of Lee's Summit, Jackson County, Missouri.

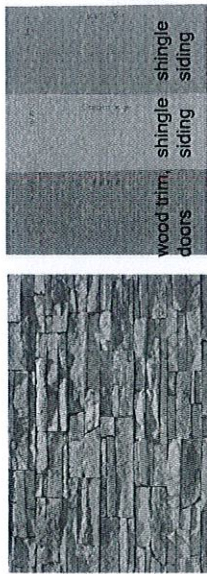
-2016--013

RECEIVED

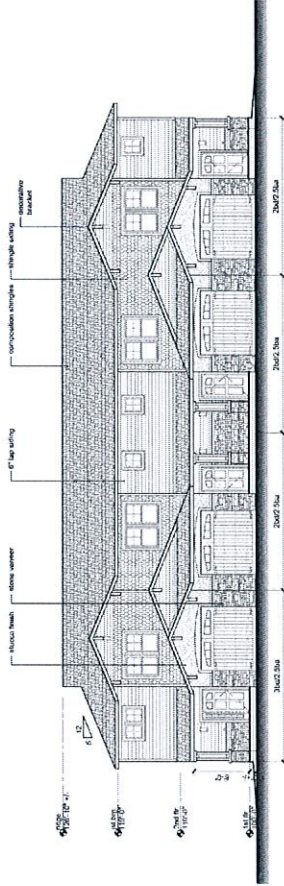
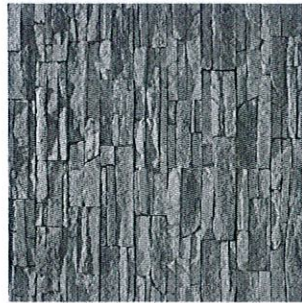
FEB 29 2016



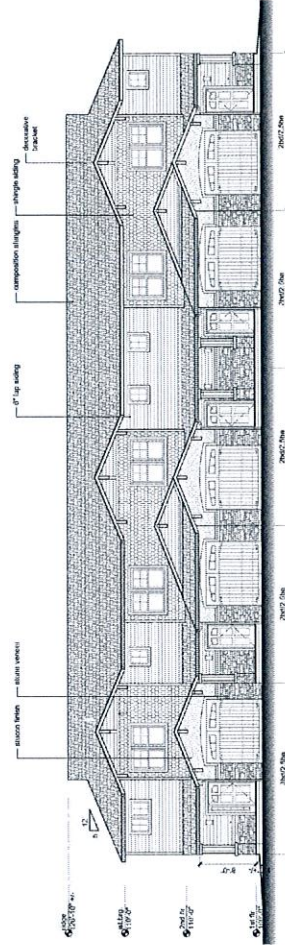
main siding colors - warm neutrals



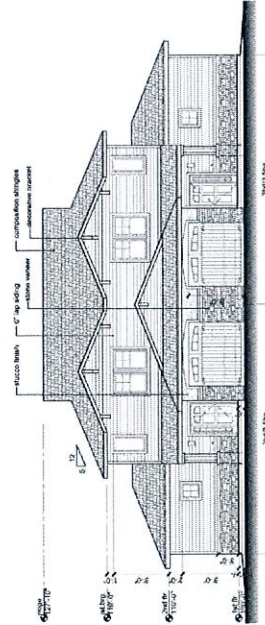
accent colors only - small gable areas, window and door trim, etc.



4 plex elevation - front



5 plex elevation - front



duplex elevation - front

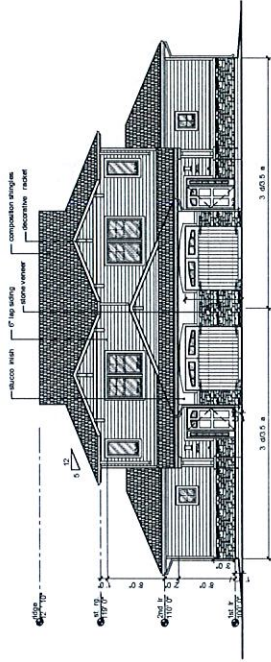
RECEIVED

-2016--013 FEB 29 2016

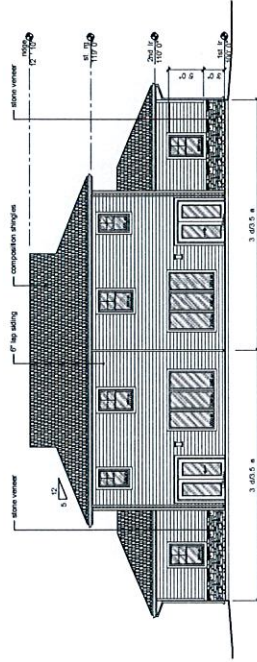
Chapel Ridge/Fairway Village Extension
 a new residential development
 Fairway Village Lot 5, NE Akin Circle
 Lees Summit, Missouri

date: 1.29.16
 drawn by: DAE
 checked by: DAE
 reviewed by: DAE

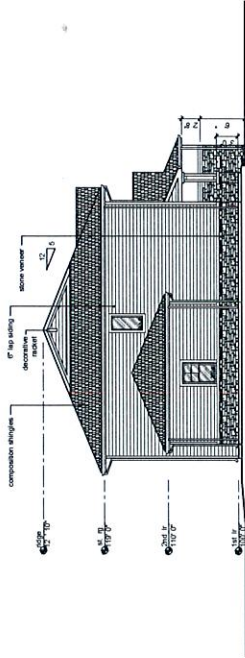
sheet number: **A3-1**
 drawing type: rezoning/ldp
 project number: 15006



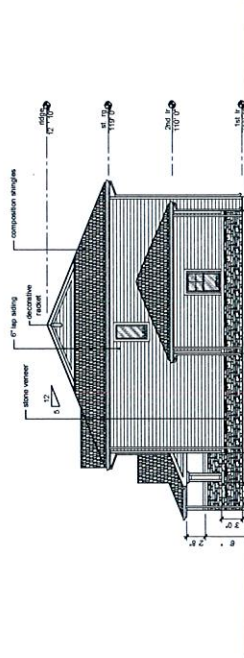
1 duplex elevation front
 scale: 1/8" = 1'-0"



2 duplex elevation back
 scale: 1/8" = 1'-0"



3 duplex elevation side
 scale: 1/8" = 1'-0"



duplex elevation side
 scale: 1/8" = 1'-0"

RECEIVED
 FEB 29 2016
 -2016-013

Planning & Codes Admin

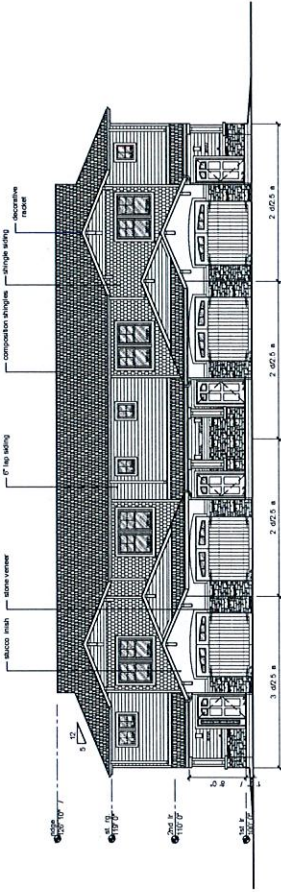
Chapel Ridge/Fairway Village Extension
 a new residential development
 Lee's Summit, Missouri

DATE: 1-29-16
 DRAWN BY: DAE
 CHECKED BY: [blank]
 PROVISIONS: [blank]
 02.20.16

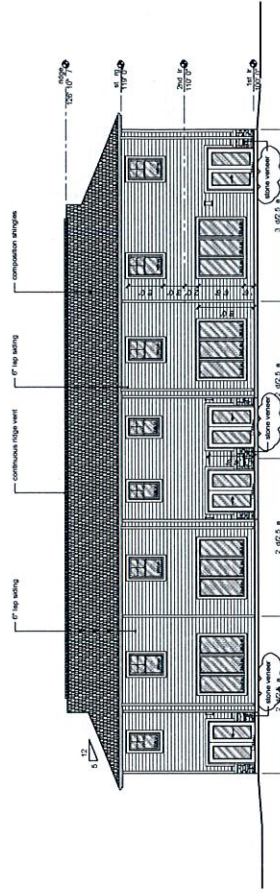
PROJECT NUMBER: A3-2
 DRAWING TYPE: [blank]
 PROJECT NUMBER: 15096

DAVIDSON ARCHITECTS

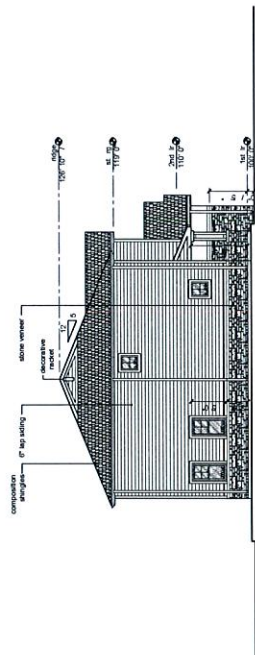
4201 Indian Creek Parkway
 Lee's Summit, MO 64086
 816-487-1000
 www.davidsonarchitects.com



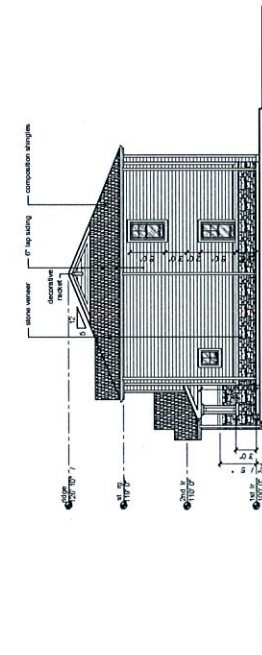
1 plex elevation front
 scale: 1/8" = 1'-0"



2 plex elevation back
 scale: 1/8" = 1'-0"



3 plex elevation side
 scale: 1/8" = 1'-0"



4 plex elevation side
 scale: 1/8" = 1'-0"

RECEIVED

FEB 29 2016

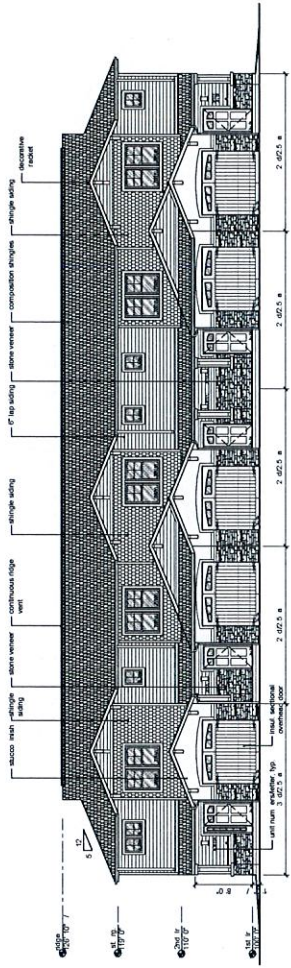
-2016--013

Planning & Codes Admin

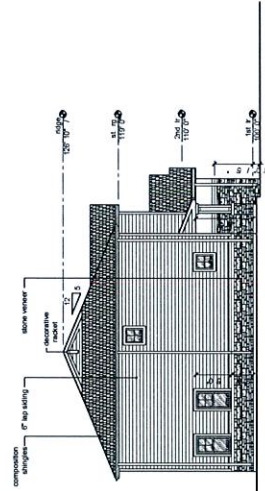
Chapel Ridge/Fairway Village Extension
a new residential development
Fairway Village Lot 5, NE Akin Circle
Lee's Summit, Missouri

DATE: 1.29.16
DRAWN BY: P.M.A.
CHECKED BY: D.A.E.
REVISIONS: 02.29.16

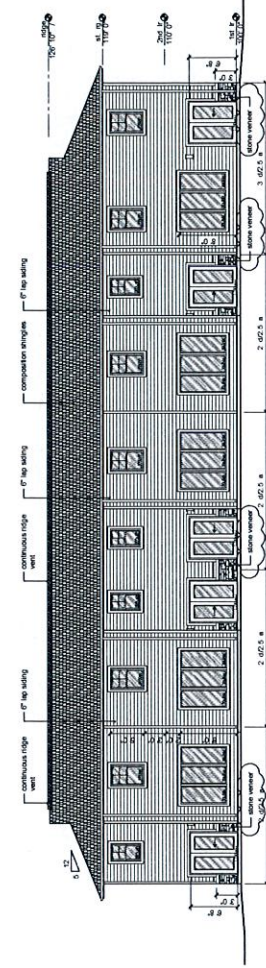
sheet number: **A3-3**
drawing type: rezoning/psd
project number: 15086



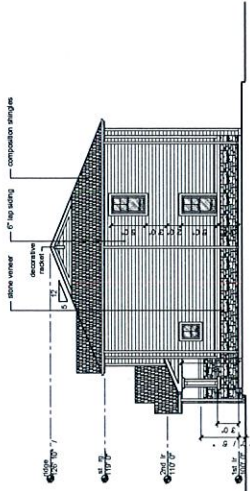
1 5 plex elevation **front**
Scale: 1/8" = 1'-0"



3 5 plex elevation **side**
Scale: 1/8" = 1'-0"



2 5 plex elevation **back**
Scale: 1/8" = 1'-0"



5 5 plex elevation **side**
Scale: 1/8" = 1'-0"

RECEIVED

-2016--013 FEB 29 2016