

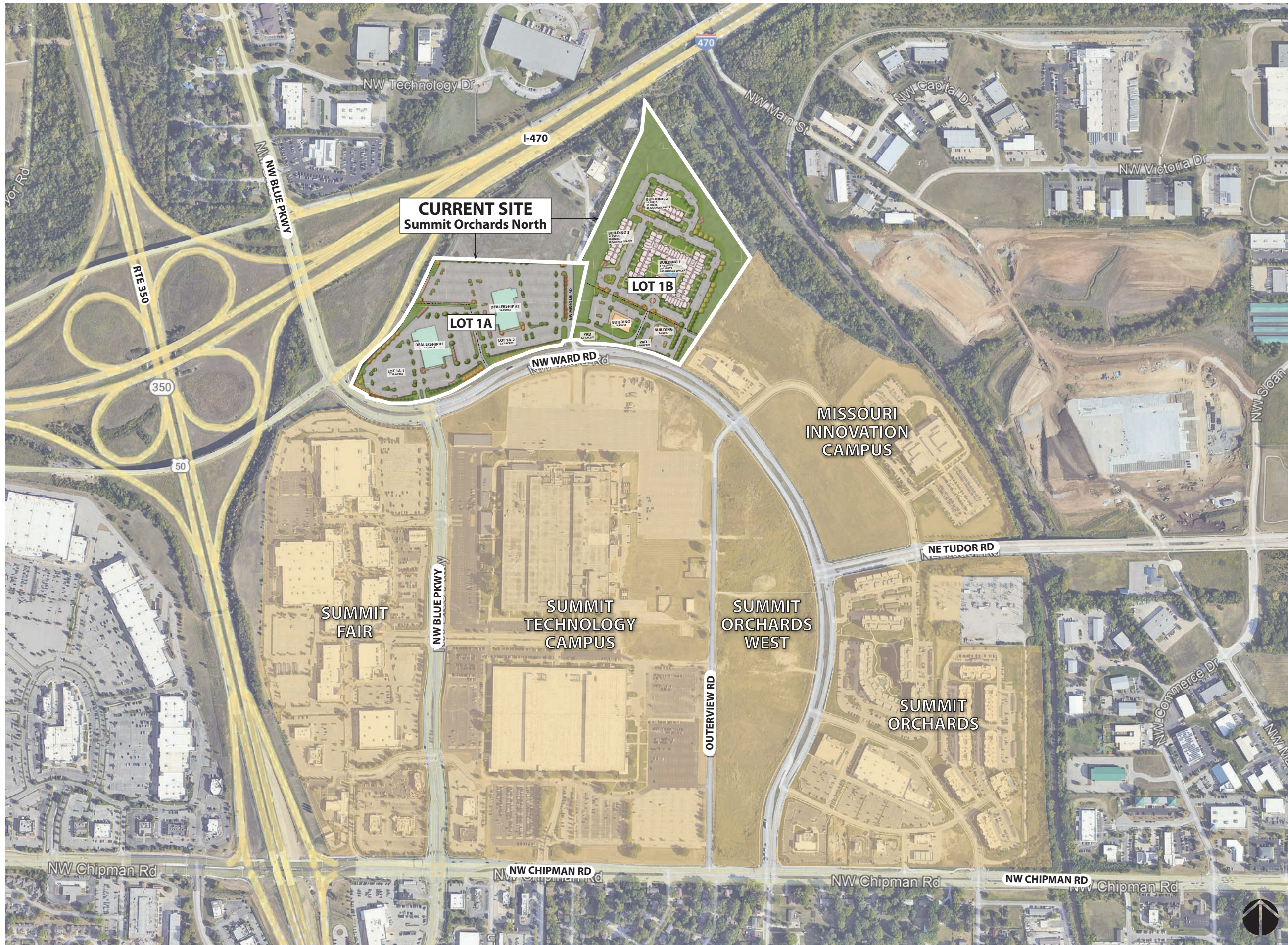
SUMMIT ORCHARDS NORTH

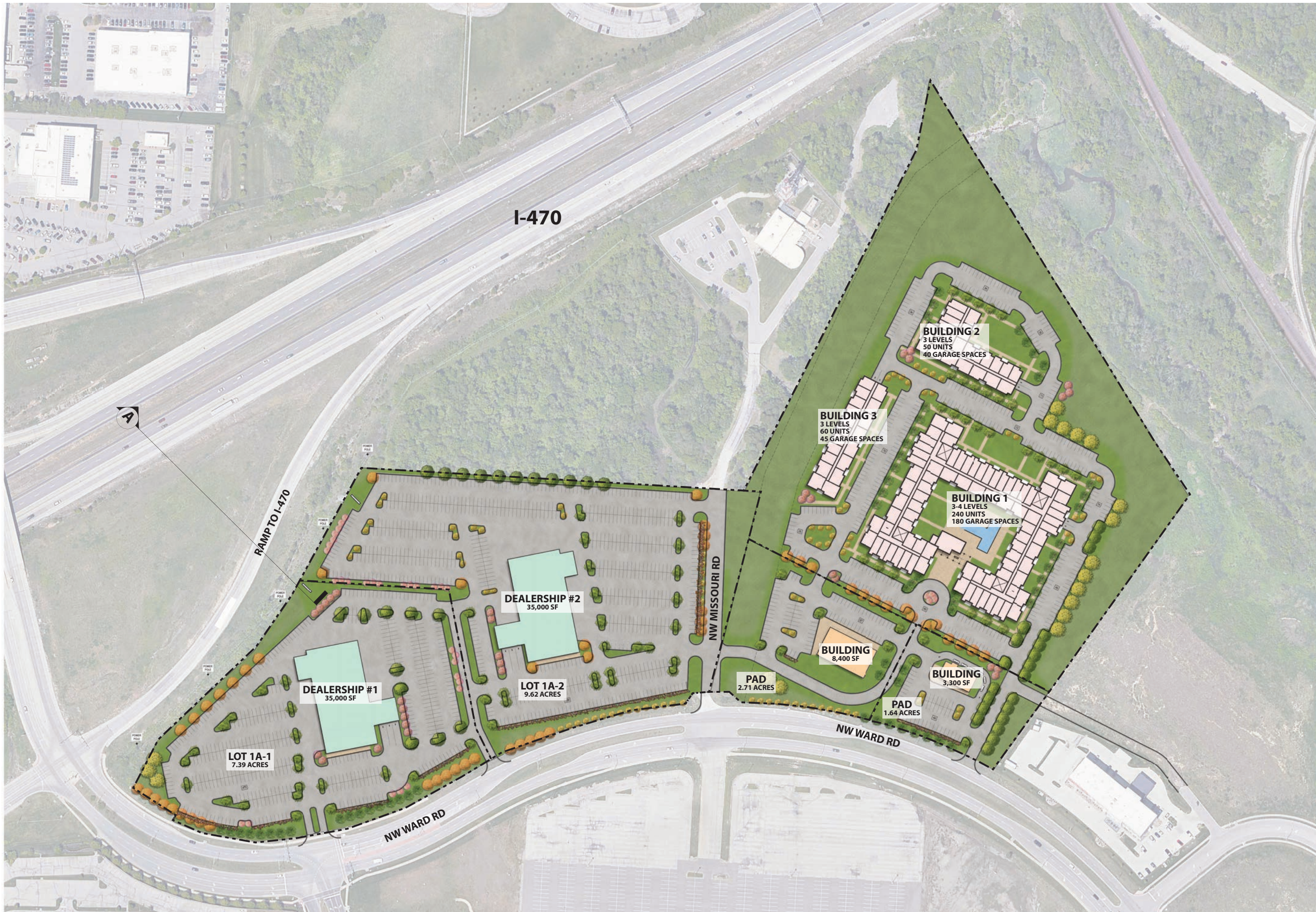
LOTS 1A & 1B

Lee's Summit, Jackson County, MO

February 12, 2024

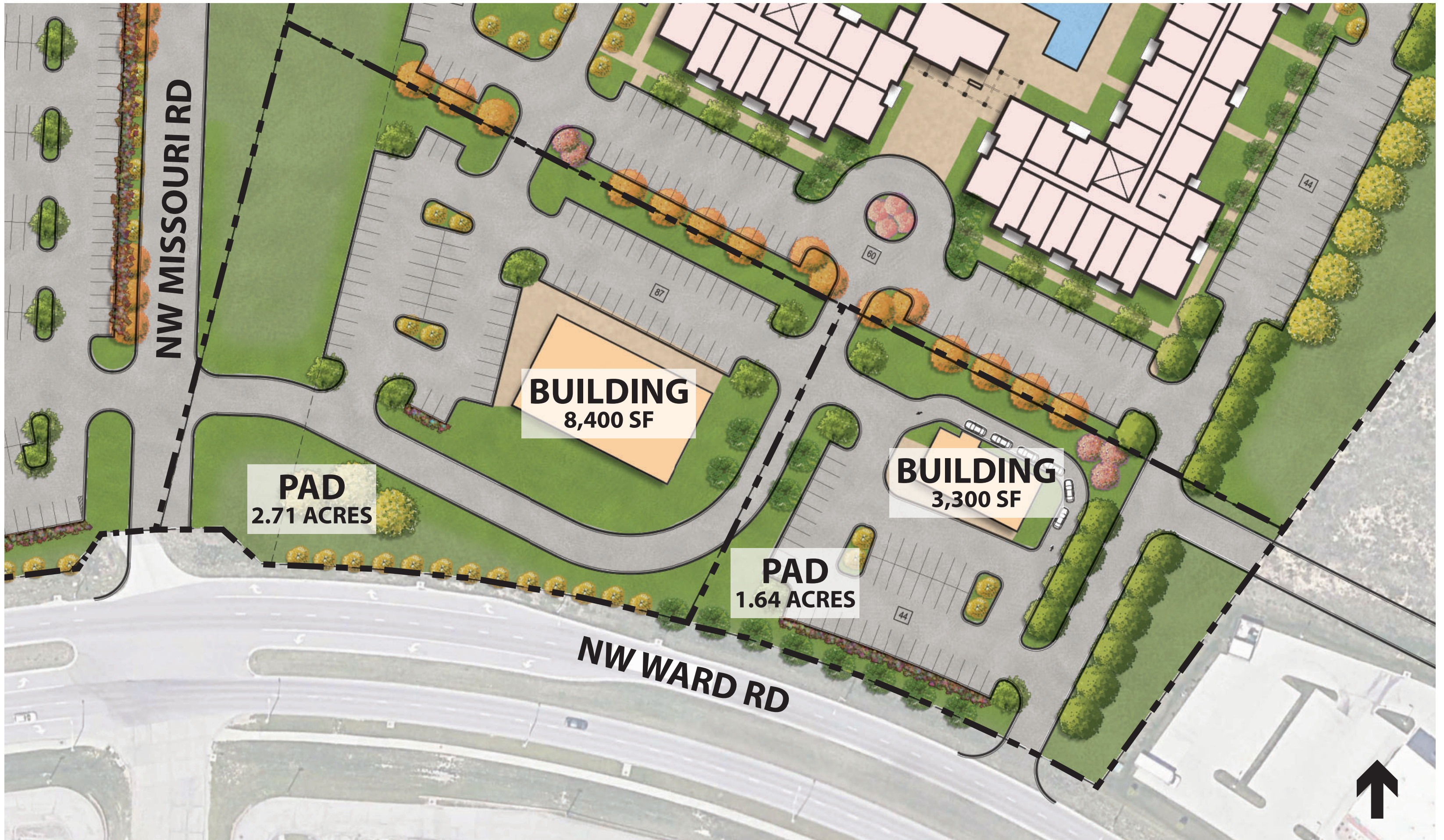








SITE PLAN DETAIL - RESIDENTIAL **SUMMIT ORCHARDS NORTH**







Rear Elevation
1/16" = 1'-0" **3**



Side Elevation
1/16" = 1'-0" **2**

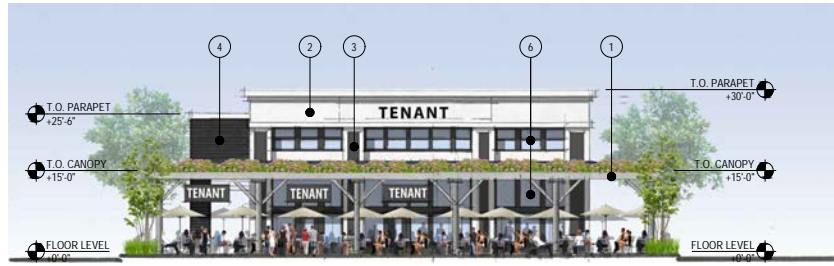


Primary Elevation
1/16" = 1'-0" **1**

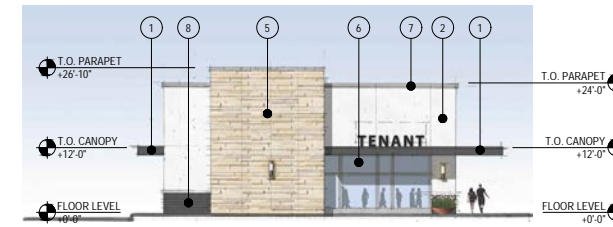
MATERIAL KEYNOTES

- 1. CAST STONE VENEER
- 2. COMPOSITE WOOD PANEL SYSTEM
- 3. FACE BRICK
- 4. GALVANIZED METAL RAILING SYSTEM
- 5. PAINTED CONCRETE PANEL SIDING
- 6. OPERABLE RESIDENTIAL WINDOW SYSTEM
- 7. OVERHEAD ALUMINUM GARAGE DOOR
- 8. ALUMINUM STOREFRONT SYSTEM
- 9. PAINTED STEEL TRELLIS
- 10. STANDING SEAM METAL ROOF
- 11. COMPOSITE METAL PANEL SYSTEM

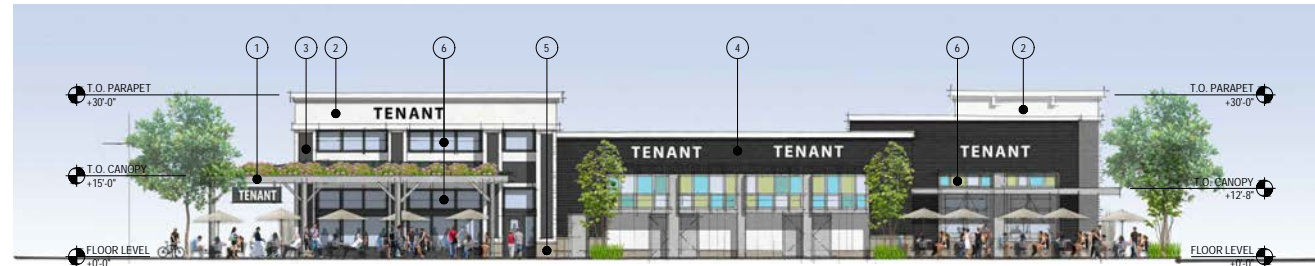
NOTE: METAL USED ONLY IN AN INCIDENTAL ROLE, I.E. TRIM, ARCHITECTURAL FEATURES, STANDING SEAM METAL ROOFING OR OTHER ARCHITECTURAL METAL SIDING OR ROOFING AS APPROVED BY THE PLANNING COMMISSION AND/OR CITY COUNCIL.



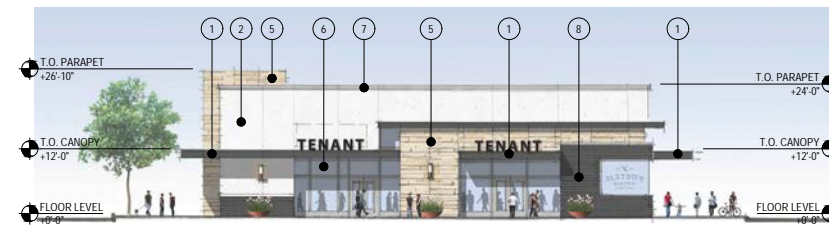
Side Elevation, Inline Retail
1/16" = 1'-0" 8



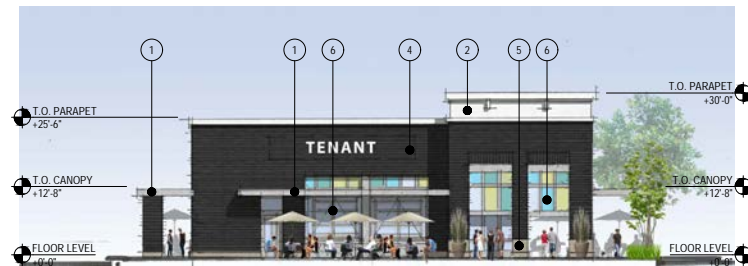
Side Elevation, Drive-Thru
1/16" = 1'-0" 4



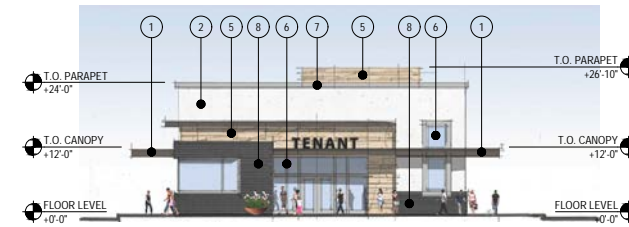
Rear Elevation, Inline Retail
1/16" = 1'-0" 7



Rear Elevation, Drive-Thru
1/16" = 1'-0" 3



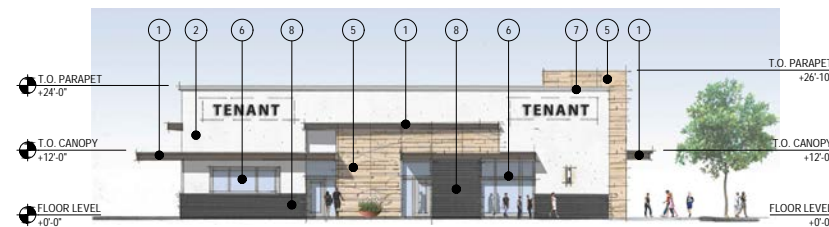
Side Elevation, Inline Retail
1/16" = 1'-0" 6



Side Elevation, Drive-Thru
1/16" = 1'-0" 2



Primary Elevation, Inline Retail
1/16" = 1'-0" 5

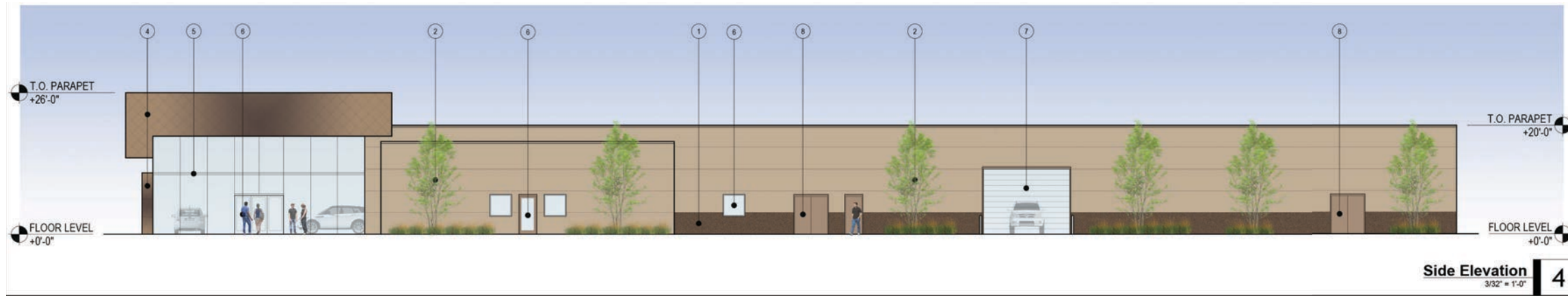


Primary Elevation, Drive-Thru
1/16" = 1'-0" 1

④ MATERIAL KEYNOTES

- 1. PAINTED STEEL CANOPY.
- 2. EIFS WALL FINISH, LIGHT PAINT.
- 3. EIFS WALL FINISH, DARK PAINT.
- 4. FACE BRICK, DARK IRONSPOT.
- 5. CAST STONE VENEER.
- 6. ALUMINUM STOREFRONT SYSTEM.
- 7. METAL COPING.
- 8. FIBER CEMENT BOARD SIDING.

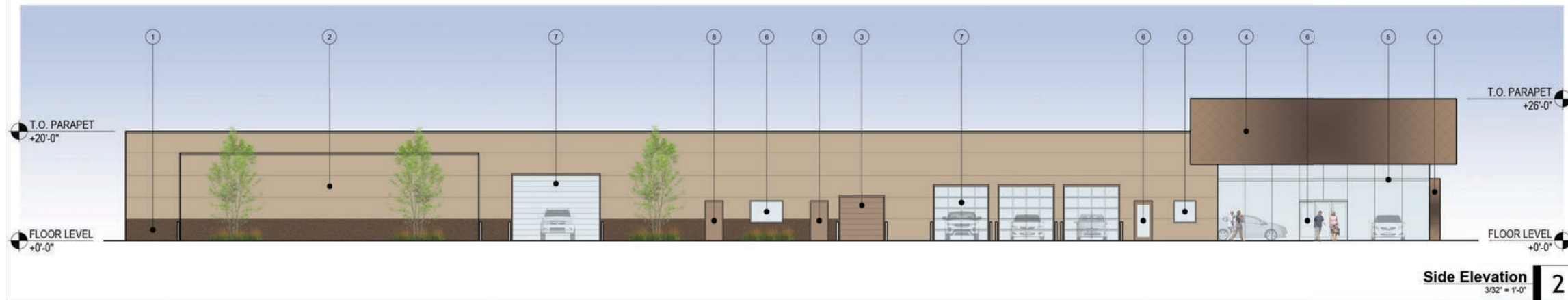
NOTE: METAL USED ONLY IN AN INCIDENTAL ROLE, I.E. TRIM, ARCHITECTURAL FEATURES, STANDING SEAM METAL ROOFING OR OTHER ARCHITECTURAL METAL SIDING OR ROOFING AS APPROVED BY THE PLANNING COMMISSION AND/OR CITY COUNCIL.



Side Elevation 4
3/32" = 1'-0"



Rear Elevation 3
3/32" = 1'-0"



Side Elevation 2
3/32" = 1'-0"

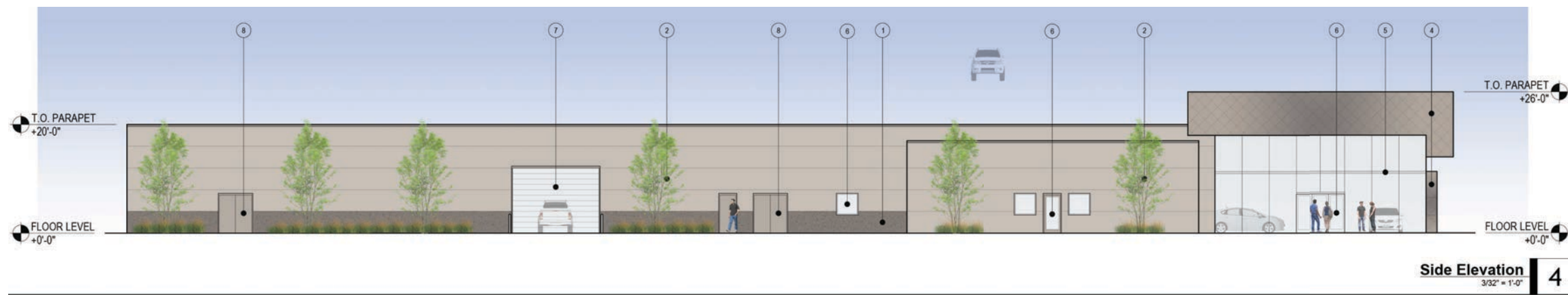


Primary Elevation 1
3/32" = 1'-0"

MATERIAL KEYNOTES

- 1. CONCRETE CMU / EFS WALL FINISH WAINSCOT, DARK PAINT.
- 2. EFS WALL FINISH, LIGHT PAINT.
- 3. ALUMINUM OVERHEAD DOOR, PAINT TO MATCH LIGHT EFS.
- 4. ACM PANELS.
- 5. STRUCTURAL SILICONE GLAZED CURTAIN WALL SYSTEM.
- 6. STOREFRONT DOOR & WINDOWS WITH CLEAR ANODIZED ALUMINUM.
- 7. GLAZED OVERHEAD DOOR WITH CLEAR ANODIZED ALUMINUM.
- 8. HOLLOW METAL DOOR, PAINT TO MATCH LIGHT EFS.

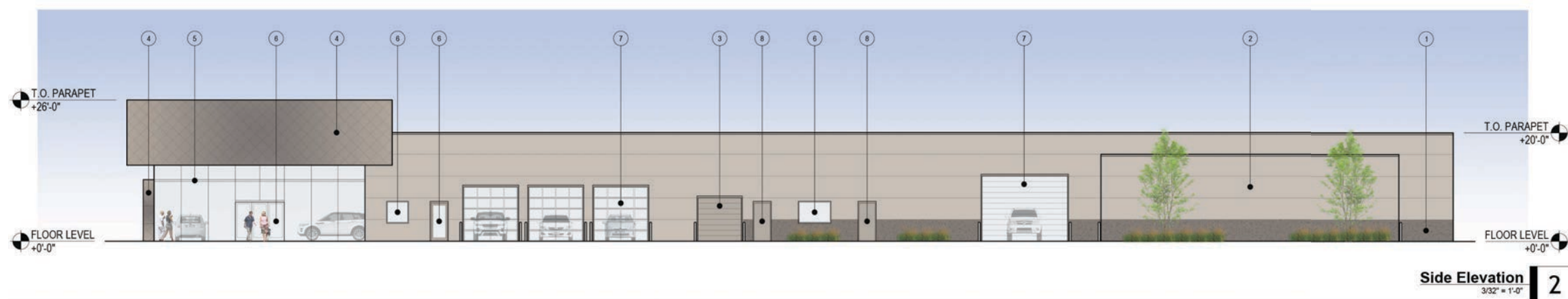
NOTE: METAL USED ONLY IN AN INCIDENTAL ROLE, I.E. TRIM, ARCHITECTURAL FEATURES, STANDING SEAM METAL ROOFING OR OTHER ARCHITECTURAL METAL SISING OR ROOFING AS APPROVED BY THE PLANNING COMMISSION AND/OR CITY COUNCIL.



Side Elevation
3/32" = 1'-0" **4**



Rear Elevation
3/32" = 1'-0" **3**



Side Elevation
3/32" = 1'-0" **2**



Primary Elevation
3/32" = 1'-0" **1**

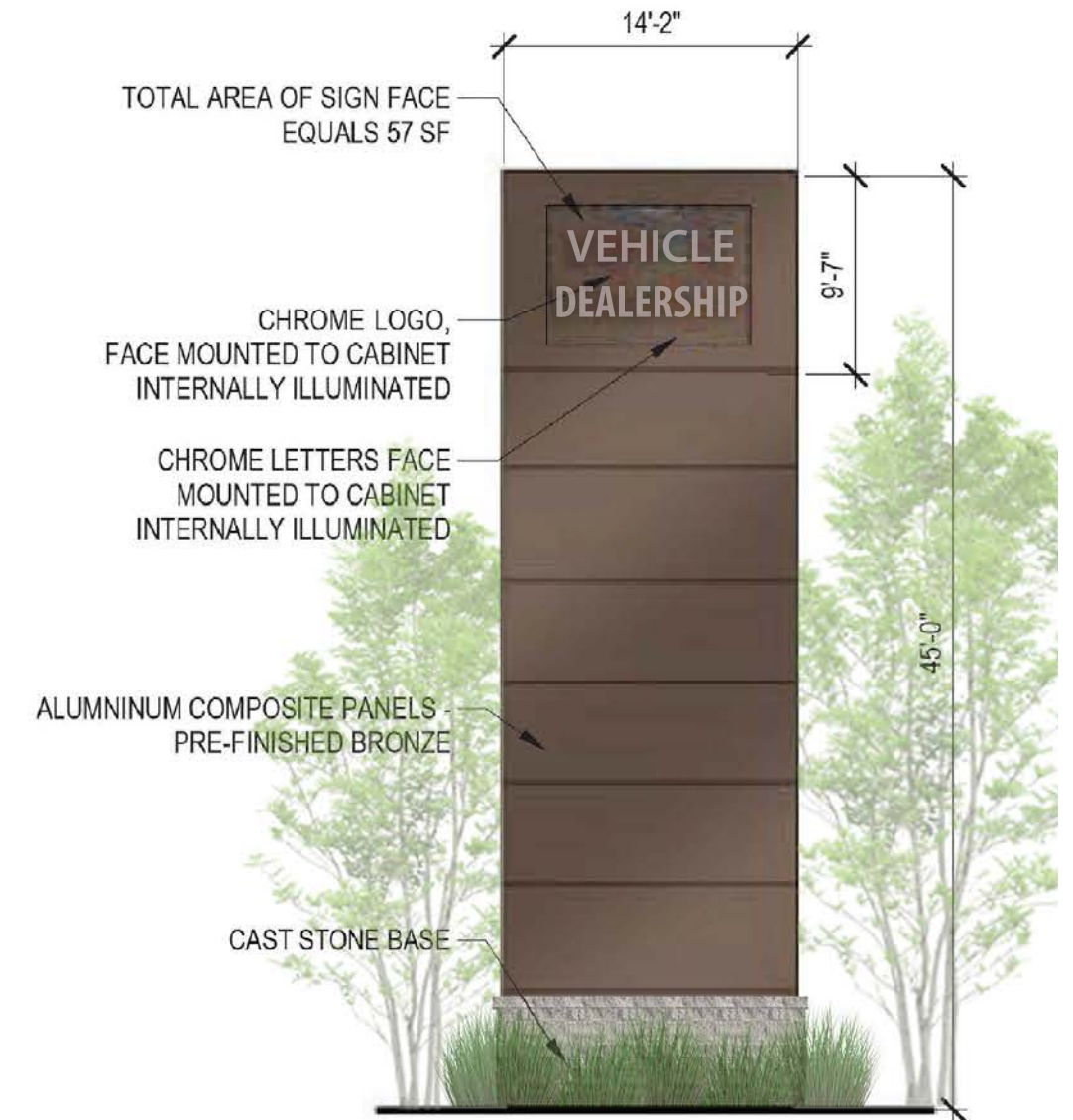
MATERIAL KEYNOTES

- 1. CONCRETE CMU / EIFS WALL FINISH WAINSCOT, DARK PAINT.
- 2. EIFS WALL FINISH, LIGHT PAINT.
- 3. ALUMINUM OVERHEAD DOOR, PAINT TO MATCH LIGHT EIFS.
- 4. ACM PANELS.
- 5. STRUCTURAL SILICONE GLAZED CURTAIN WALL SYSTEM.
- 6. STOREFRONT DOOR & WINDOWS WITH CLEAR ANODIZED ALUMINUM.
- 7. GLAZED OVERHEAD DOOR WITH CLEAR ANODIZED ALUMINUM.
- 8. HOLLOW METAL DOOR PAINT TO MATCH LIGHT EIFS.

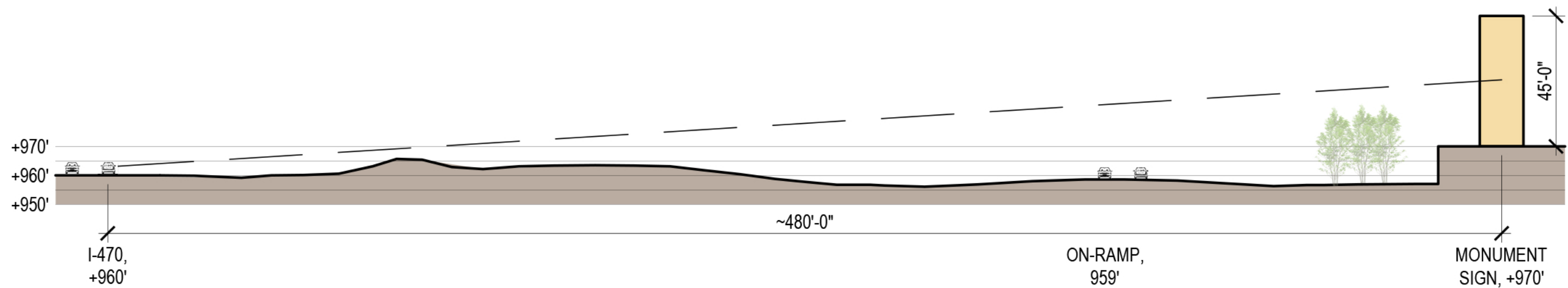
NOTE: METAL USED ONLY IN AN INCIDENTAL ROLE, I.E. TRIM, ARCHITECTURAL FEATURES, STANDING SEAM METAL ROOFING OR OTHER ARCHITECTURAL METAL SIDING OR ROOFING AS APPROVED BY THE PLANNING COMMISSION AND/OR CITY COUNCIL.



SITE PLAN - DETAIL



DEALERSHIP MONUMENT SIGN



SITE PLAN - SECTION A

MONUMENT SIGN - DEALERSHIPS **SUMMIT ORCHARDS NORTH**

THANK YOU

