

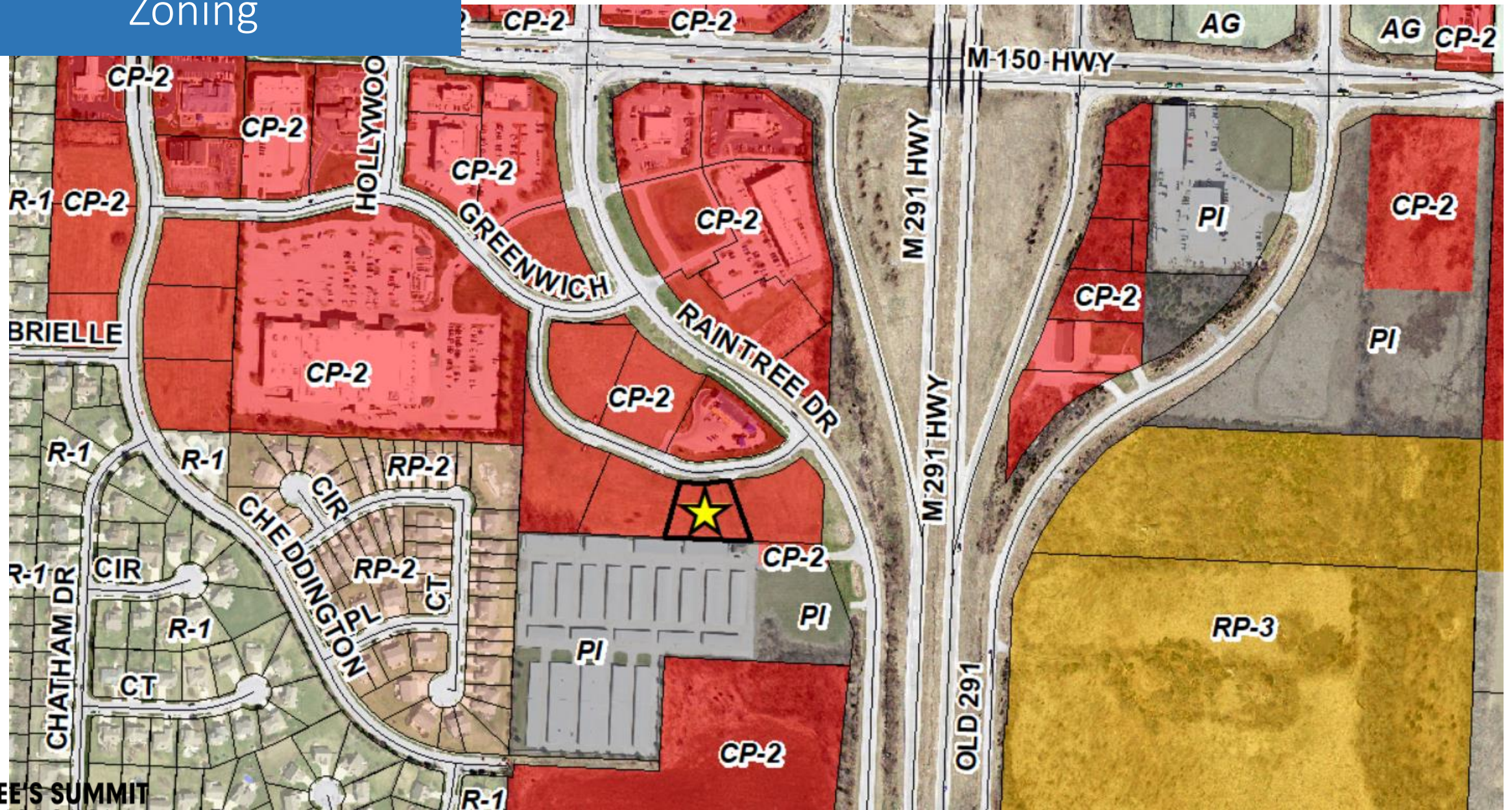
PL2023-251

Jim Hubbard
Insurance Office
Preliminary
Development
Plan

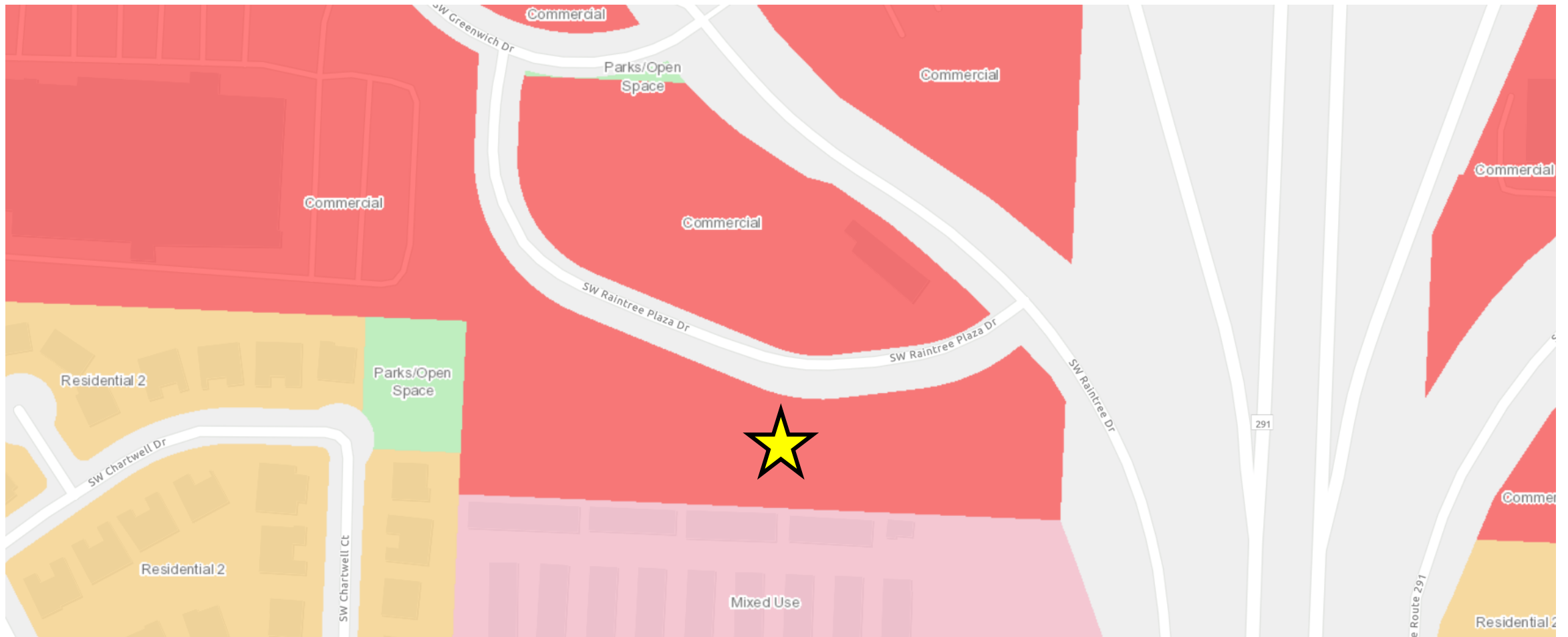


Planning Commission– February 27, 2024

Zoning



Ignite! Land Use Map



Preliminary Development Plan

Zoning

- CP-2

Property Size

- 0.67 acres

Proposed Land Use

- Office

Building Area

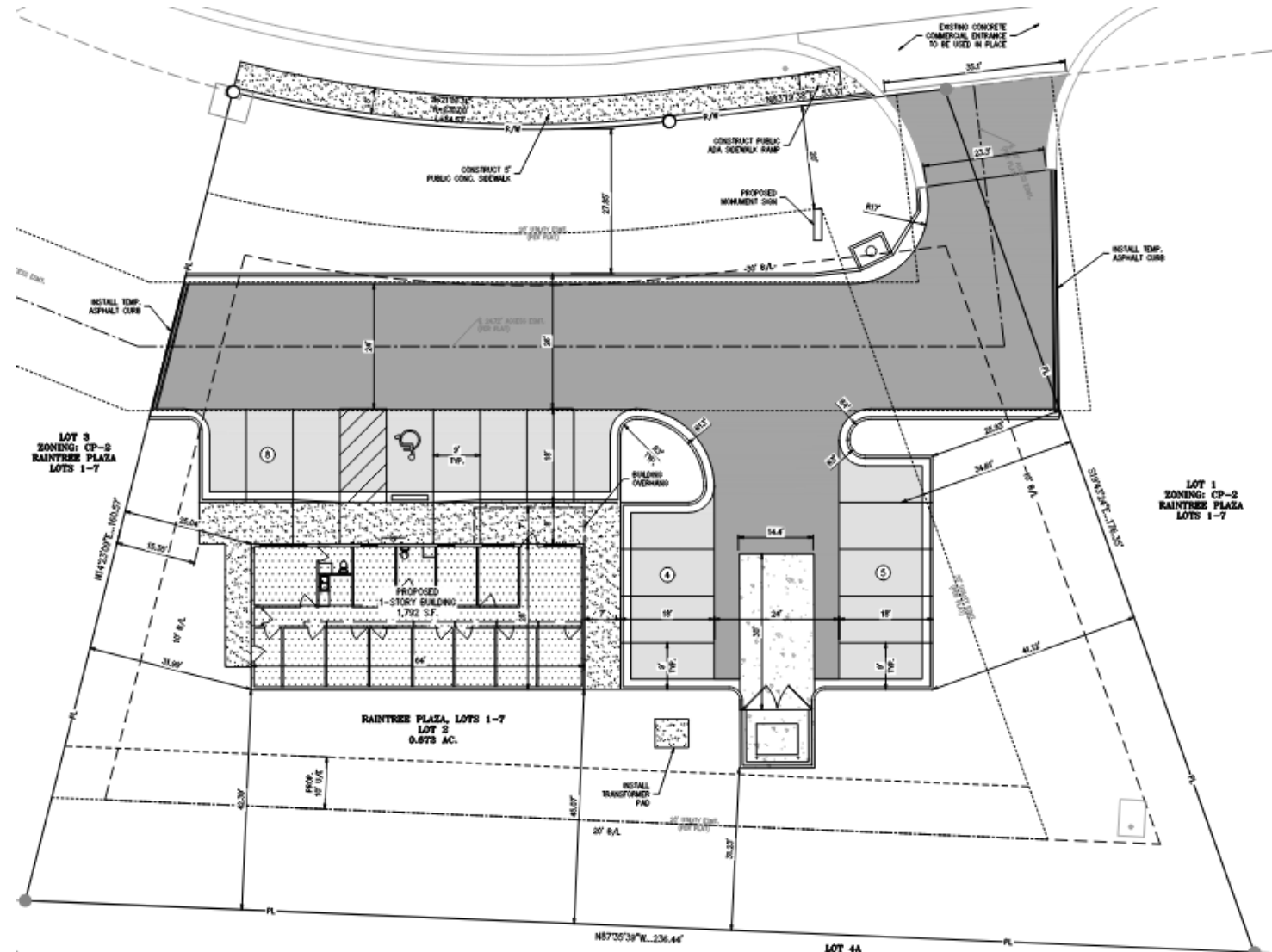
- 1,792 sq. ft.

Building Height

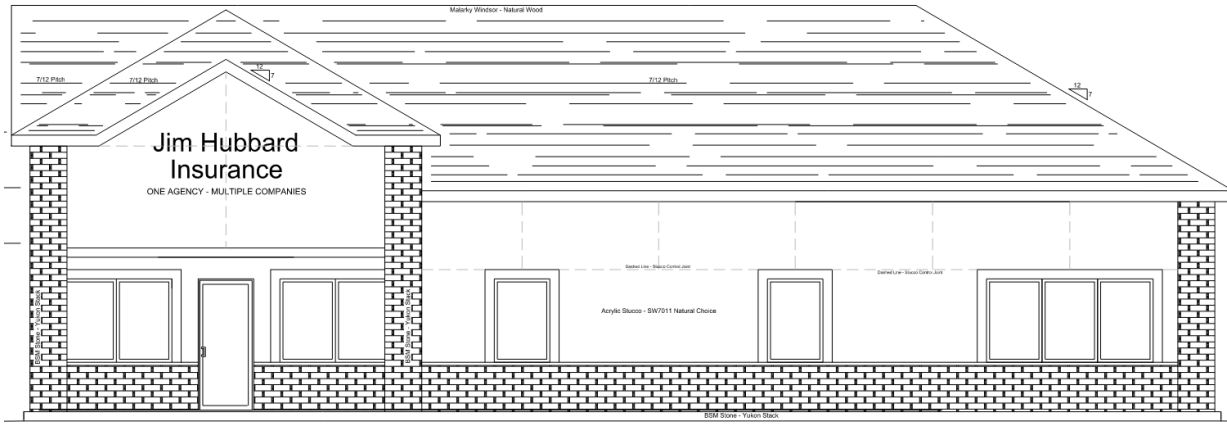
- 22'

Parking Spaces

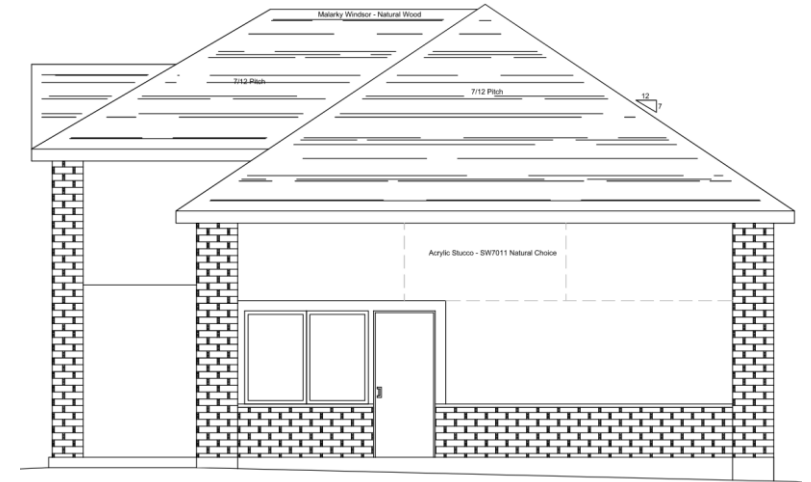
- 8 required
- 17 provided



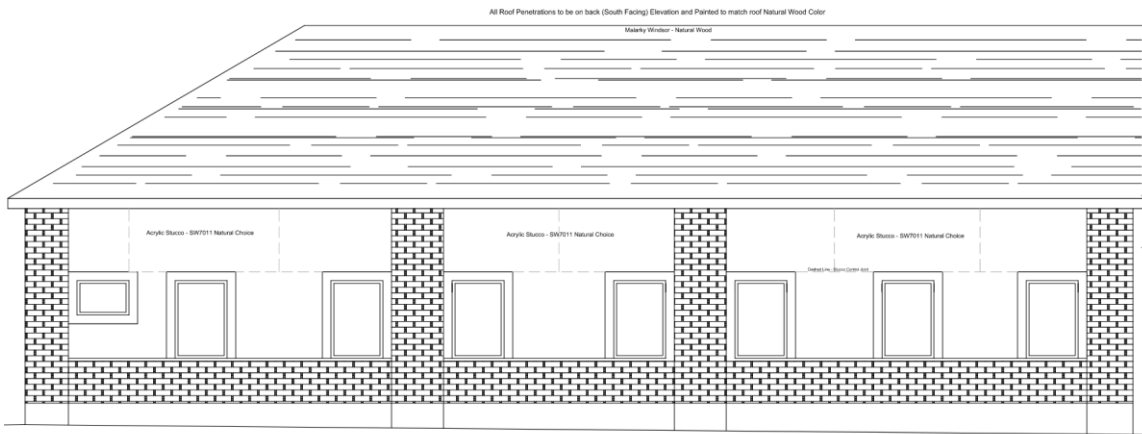
Architectural Elevations



Front Elevation - North Facing



Left Side Elevation - East Facing



Back Elevation - South Facing

Materials: Stucco and manufactured stone

Architectural Renderings



Approval Conditions

1. Development shall be in accordance with the preliminary development dated November 14, 2023, and building elevations dated July 9, 2023.

PL2023-236

Lee's Summit Flex
Space
Preliminary
Development
Plan



Planning Commission– February 27, 2024