

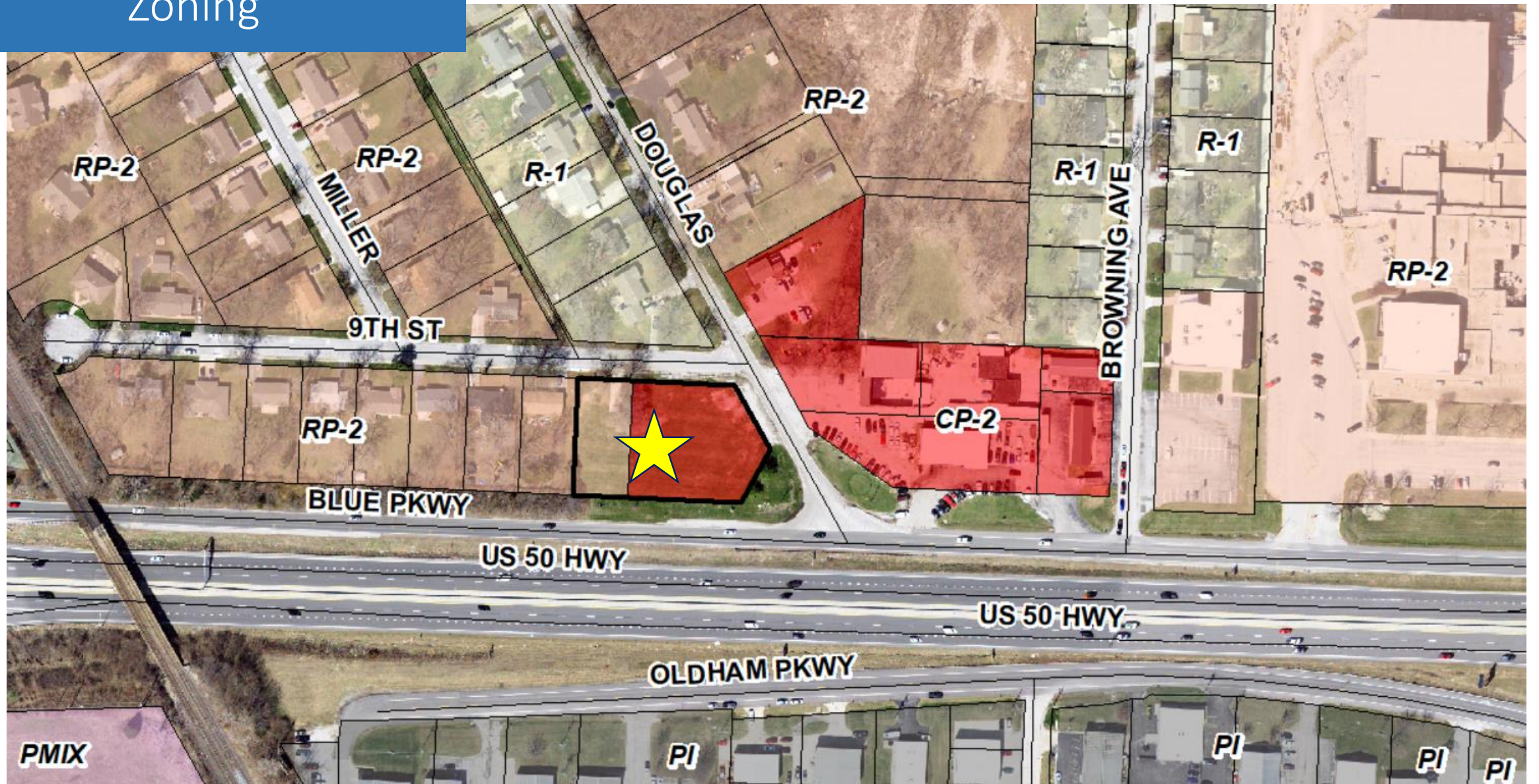
PL2023-335

Pro Deo Youth
Center
Preliminary
Development
Plan

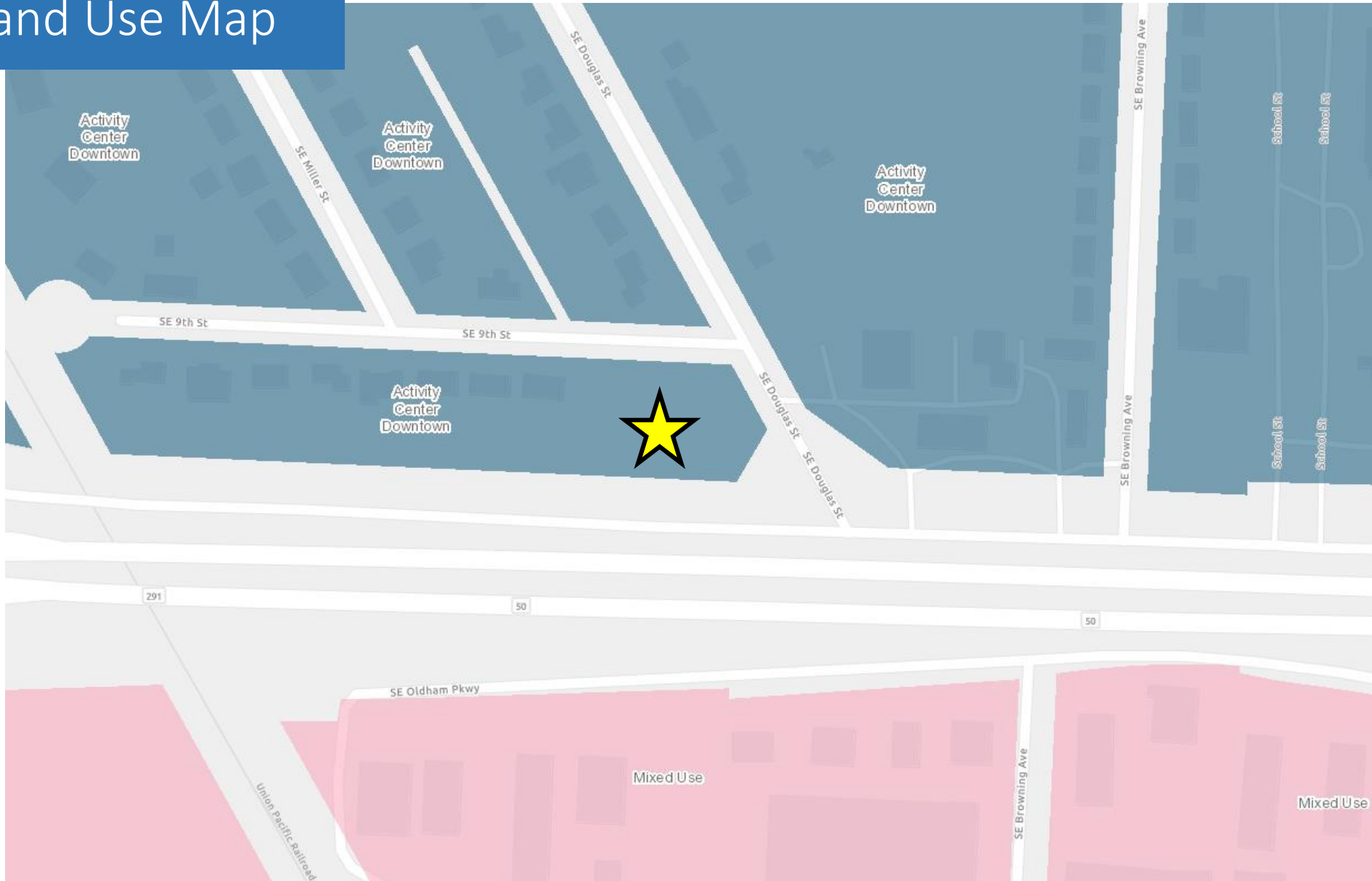


City Council – March 5, 2024

Zoning



Ignite! Land Use Map



Preliminary Development Plan

Existing Zoning

- RP-2 and CP-2

Proposed Zoning

- CP-2

Property Size

- 0.90 acres

Proposed Land Use

- Youth center

Building Area

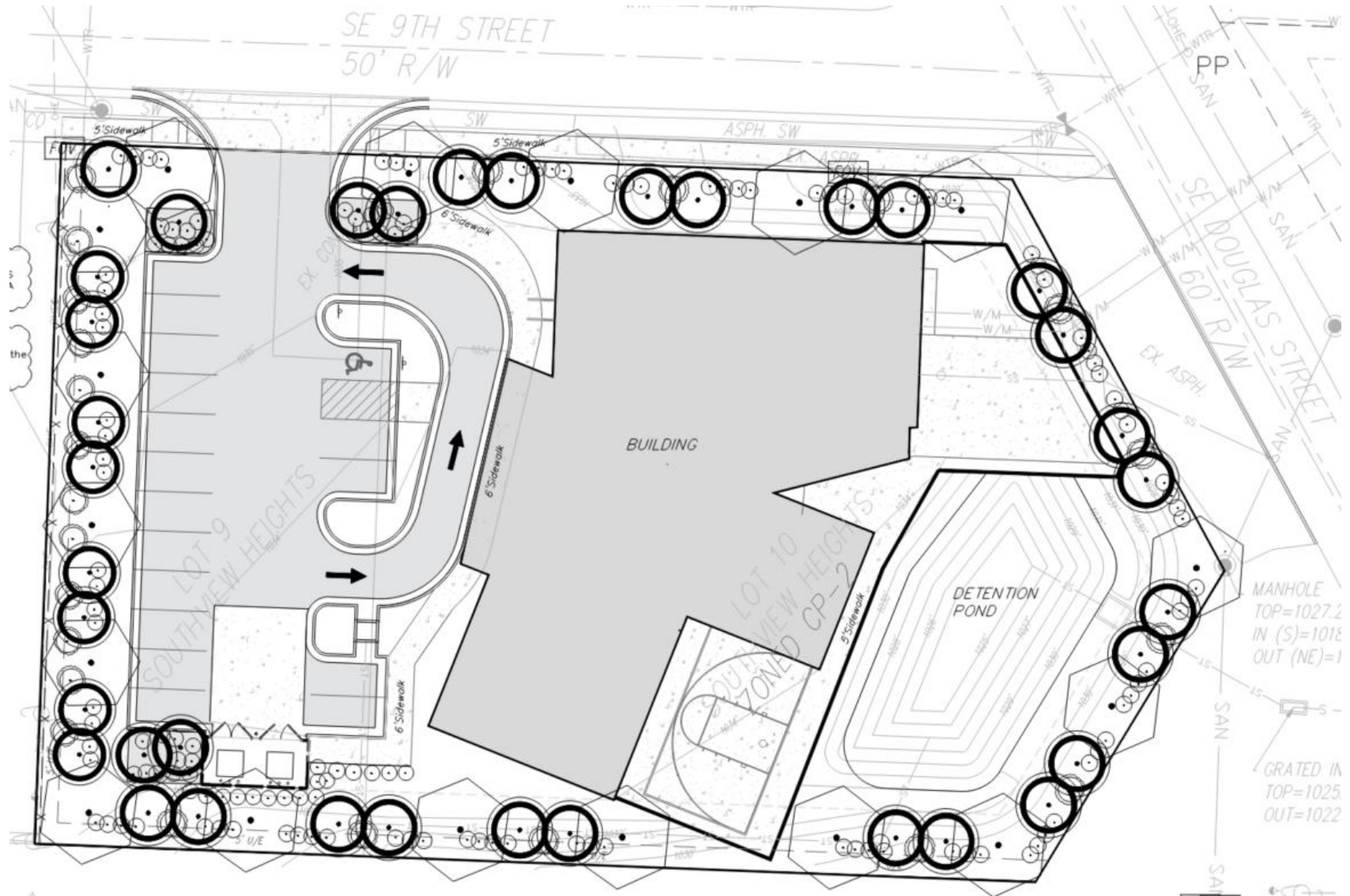
- 9,366 sq. ft.

Building Height

- 22'-9"

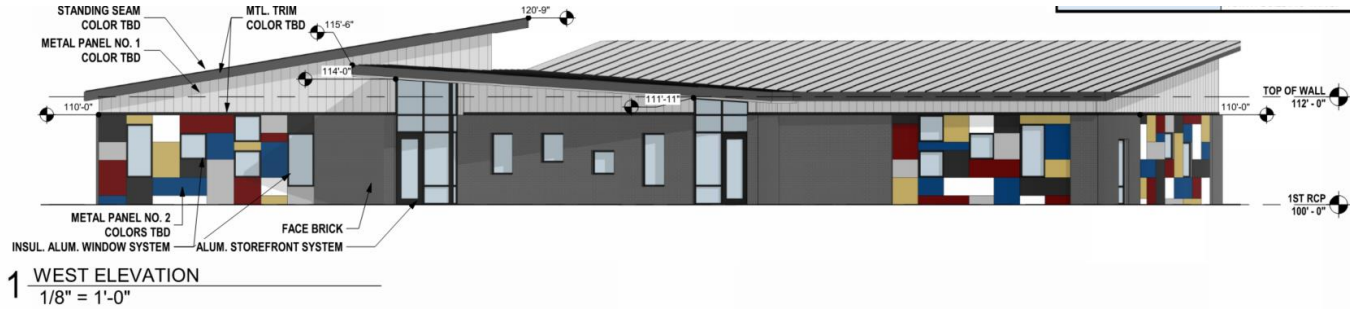
Parking Spaces

- 17 required
- 17 provided

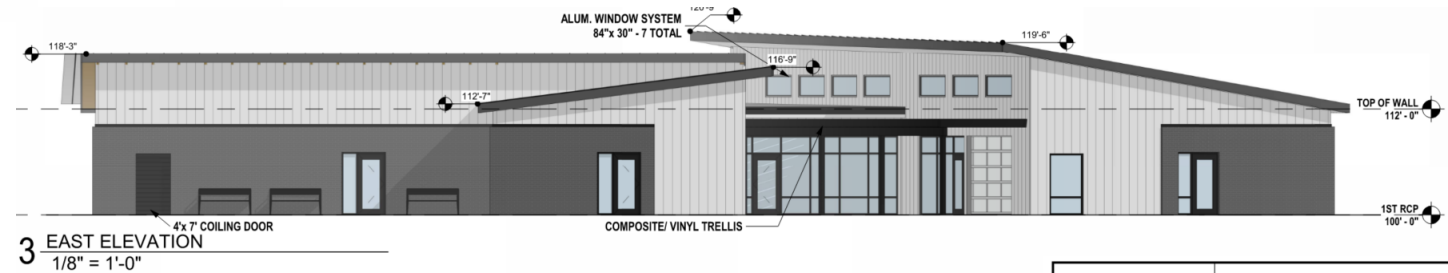
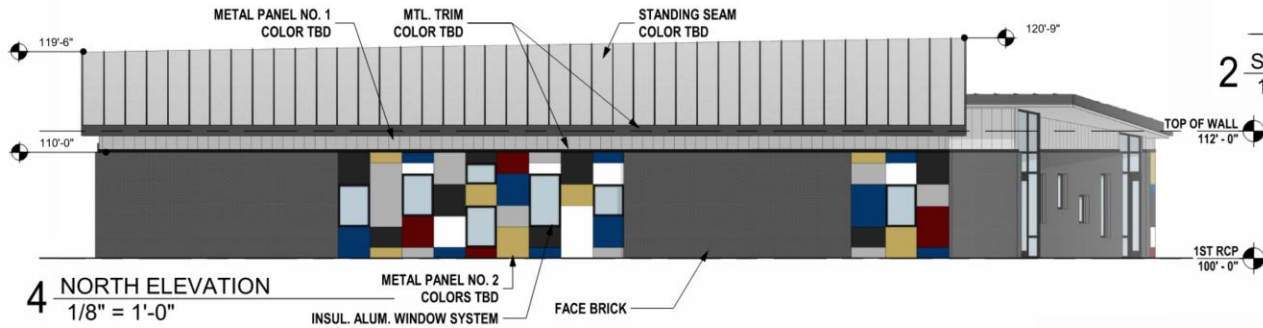
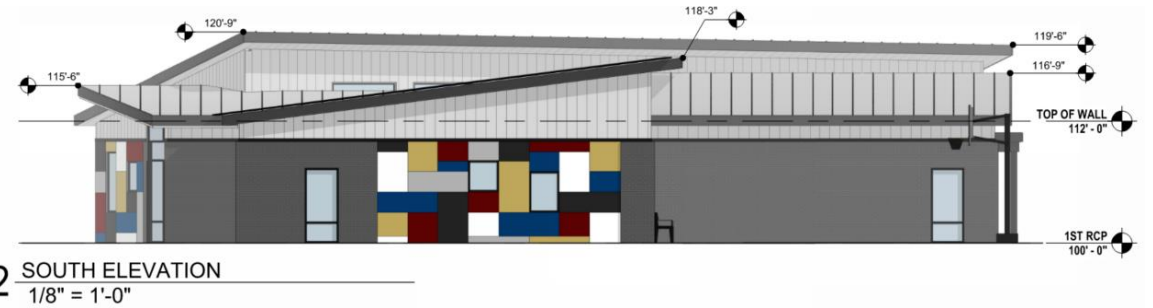


Architectural Elevations

Materials: Brick, metal panel and glazing



ELEVATION	MATERIAL				TOTAL %
	FACE BRICK	METAL PANEL 1 - CONCEALED FASTENER	METAL PANEL 2 - COLORED ROUTE & RETURN PANEL	GLAZING	
NORTH 1 - 9TH STREET ELEVATION	51.00%	12.00%	29.50%	7.50%	100.00%
NORTH 2 - PATIO WALL AND LOWER VOLUME ELEVATION (NOTE SHOWN ON SHEET)	0.00%	85.50%	0.00%	14.50%	100.00%
EAST - SE DOUGLAS ST. ELEVATION	38.50%	45.50%	0.00%	16.00%	100.00%
WEST - PARKING LOT FACING ELEVATION	35.00%	20.00%	22.00%	23.00%	100.00%
SOUTH 1 - SE BLUE PARKWAY ELEVATION	52.00%	20.00%	21.50%	6.50%	100.00%
SOUTH 2 - PATIO WALL AND UPPER VOLUME ELEVATION (NOTE SHOWN ON SHEET)	0.00%	61.50%	0.00%	38.50%	100.00%



Approval Conditions

1. Development shall be in accordance with the preliminary development plan with a revision date of January 5, 2024.
2. Development shall be in accordance with the building elevations with an upload date of January 15, 2024.

PL2023-335

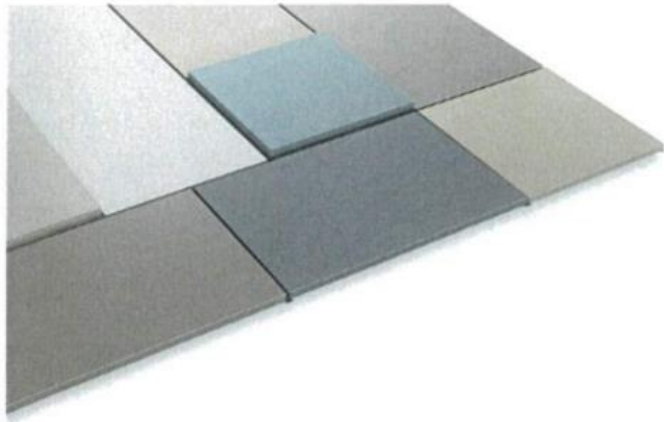
Pro Deo Youth
Center
Preliminary
Development
Plan



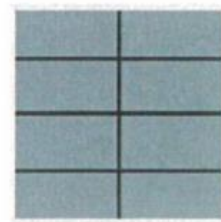
City Council – March 5, 2024

Exterior Materials

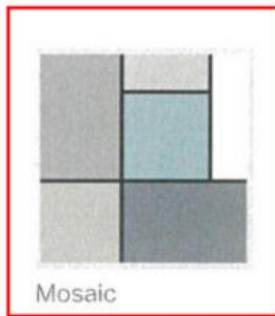
METAL WALL PANEL SYSTEM



Running Bond



Stacked



Mosaic



IW-10A IW-11A IW-12A

IW-13A IW-14A IW-15A